

The Harold Kass Collection of United States Stamps and Major Errors

November 17, 2009 at 1PM

Feldman USA Galleries
108 West 39th Street 8th floor
New York City, NY

Table of Contents



United States Stamps
Lots 10000-10163



United States Major Errors
Lots 10164-10331

Key to Cataloguing

Symbols

*** Never Hinged -- gum in its original state as sold over a post office counter)

* Original gum -- lightly hinged or h.r. – gum covers the whole stamp – lightly hinged means a small area being affected by a prior hinge and h.r. means a hinge remnant which remains affixed.

This symbol is also used to denote without gum as issued and disturbed gum – gum no longer in its original state due to heavy prior hinging, or alteration by mount, humidity, manipulation or glazing.

(*) Unused (no gum or regummed)

⊙ Used

⊕ Block of four

△ On piece

✉ Cover

Condition

Extremely Fine – outstanding, the finest possible

Very Fine – choice condition, well-centered

Fine-Very Fine – perforations not close to design but off center in both directions

Fine – off center in one or two directions with perforations barely clear of design

Faults such as a thin spot, tear, crease, etc. will be described on all individual lots at all times. In larger lots, degrees of condition denote the average, and copies above and below such condition can be expected. Minor separations on blocks or sheets are the rule rather than the exception and are not grounds for the return of a lot.

Estimated Values

If an estimate of current market value is provided, then it is done so as range (200-300 for example means \$200-\$300). Our estimates tend to be conservative and bids that are a low percentage of these estimates are virtually never successful. If a number is published that is catalogue value and the lot may sell for either more or less depending on its condition. You may contact us for our estimate of market value for these lots in order to assist you with your bidding.

Conditions of Sale

The currency of the auction is US Dollars

Inspection of Lots Prior to the Auction

There are two ways to physically examine lots prior to an auction

a. In person – either on premises or at a trade show at which David Feldman USA has a booth. Ample opportunity is provided for potential purchasers to examine lots at our galleries either during scheduled viewing times or by appointment.

b. Postal viewing – purchasers known to us may, at David Feldman USA's sole discretion, have lots sent to them by Federal Express for viewing. Lots must be returned the same day they are received and the viewer is to pay shipping and insurance both ways. Postal viewers not immediately returning lots will lose the privilege for life.

In addition, potential purchasers who cannot view by the above may phone or e-mail David Feldman USA requesting an expanded description; we will do our best to accommodate all requests, but accept no responsibility for errors or omissions in these expanded descriptions.

Bidding

1. Unless announced otherwise on the auction floor, lots are sold as numbered in the printed catalogue. David Feldman USA, as agent for the consignor, shall regulate the bidding and determine the manner in which the bidding shall be conducted.

2. David Feldman USA reserves the right to a) withdraw any lot prior to sale without liability to any potential purchaser or agent, or b) to group two or more lots belonging to the same consignor.

3. The highest bid acknowledged by the auctioneer shall prevail.

4. Bids are in US Dollars and bidding increments are as follows:

Up to \$300 by \$10

\$300-\$700 by \$25

\$700-\$1,400 by \$50

\$1,500 - \$3,000 by \$100

\$3,000-\$7,000 by \$250

\$7,000-\$14,000 by \$500

\$15,000-\$30,000 by \$1,000

\$30,000 and up Auctioneer's discretion

These increments are a guide for bidding uniformity. The auctioneer retains the right to change the increments at his discretion when bidding activity warrants or he may break the increments to accommodate an agent's bid.

5. On all lots, a commission of 15% of the hammer price is payable by the buyer.

6. The auctioneer reserves the right to bid on behalf of absentee bidders but shall not be liable for errors and omissions in executing bids, regardless of the manner in which they were received, and whether such errors or omissions be those of the bidder or agent or those of the auctioneer.

7. The auctioneer may refuse any bid not believed to be made in good faith, or made with the provision that the lot be sent to an expert (committee) not acceptable to the auctioneer.

8. All lots are offered without reserves.

9. Agents are responsible for all purchases made on behalf of their clients, unless other arrangements have been confirmed in writing prior to the auction.

10. Should a dispute arise between bidders or between a bidder and the auctioneer acting on behalf of either a mail bidder or a consignor, the auctioneer at his sole discretion shall determine the successful bidder or whether to reoffer the lot in dispute. Should a dispute arise after the sale, the auctioneer's sale records shall be conclusive.

Returns

11. Each lot is sold as genuine and correctly described. Any lot which a purchaser considers to be incorrectly described may be returned to the auctioneer within 15 business days of receipt for valid reason. A valid reason is a) a fault not described, or b) a blatant error in the lot description including catalogue value, or c) a lot receiving an accurate certificate of authenticity not conforming to the lot's description (See Condition of Sale 13).

12. The following lots cannot be returned for any reason: a) lots containing 6 or more items, b) lots that have been either viewed in person or postally, c) lots that are being returned because of something that can be seen in the photograph, d) lots described as having repairs, defects or faults, e) lots comprised of encapsulated stamps.

Extension of Time

13. For all lots containing 5 items or less, the purchaser has the right to request that a lot be sent to a mutually agreed upon expert or expert committee for an opinion on the authenticity and condition of a lot.

a. The purchaser must notify the auctioneer within 21 calendar days from the last day of an auction of his desire to place a purchased lot or lots on extension, the name of the expert (committee), whether or not a grade or minimum grade is desired, and (if this is the practice of the expert committee), whether or not the purchaser would like his name or David Feldman USA to appear on the certificate. The expert (committee) must be acceptable to David Feldman USA.

b. If the expert (committee) agrees with our description then the purchaser must also pay the associated fee and shipping charges both ways between expert (committee) and auctioneer and from the auctioneer to the purchaser.

c. The auctioneer is to submit the lot(s) to the expert (committee). No exceptions. Failure to comply will result in denial the extension request.

d. In the event an opinion cannot be reached ("no opinion"),

the sale will be canceled and if the account has no outstanding balances, then all monies collected shall be returned to the purchaser without interest.

e. Any US stamp or postal history with a PF or PSE certificate issued within the last five years is not eligible for extension.

Payment for Purchases

14. A successful absentee bidder (one who gives his bids to the auctioneer to be executed), shall be notified of lots purchased. Before David Feldman USA will send such lots, payment in full must be received within 5 business days of receipt of the notification. However, a purchaser known to the auctioneer, or who furnishes satisfactory references, may, at the auctioneer's sole discretion, have purchases delivered or forwarded for payment. Purchases will be shipped to the address on the bid sheet and proof of the shipping by David Feldman USA shall consist of a receipt indicating safe delivery to the shipper (USPS, Fed Ex, DHL, etc.).

15. Payment is to be made in US dollars. If funds are to be wired, please contact us for details.

16. All shipping charges and transit insurance are the responsibility of the purchaser.

17. Title shall not pass to the purchaser until David Feldman USA has received full payment.

18. Purchasers must pay for all lots placed on extension in accordance with Condition of Sale 13, even while the lot(s) are with the expert or expert committee. A late payment of 2% per month shall be added if payment is not made in accordance with Condition of Sale 13 above.

19. Purchased lots not paid for after 60 days, or sold to a purchaser who refuses to respect these Terms of Sale (delinquent or non-compliant purchases), will be reoffered by the auctioneer in a future sale. If the lot(s) realize less than the originally awarded amount to the defaulting purchaser, then the defaulting purchaser is responsible for the difference in net price (hammer plus buyer's commission – seller's commission). If the lot(s) realize more than the awarded amount, the defaulting purchaser will not receive any proceeds; the surplus will be donated to the American Philatelic Society.

20. A defaulting purchaser shall be deemed to have granted David Feldman USA a security interest in all lots awarded but not paid for within 60 days that remain in the auctioneer's possession. David Feldman USA shall have all of the rights afforded a secured party under the New York Uniform Commercial Code with respect to such property and may apply against such obligations all monies held or received by it for the account of or due from DF USA to such purchaser.

21. If David Feldman USA takes any legal action to secure payment of a delinquent account, the defaulting purchases shall be liable for all legal and other expenses incurred by David Feldman USA to secure such payment, including but not limited to a reasonable allowance for attorney's fees. For purposes of this paragraph, the term legal steps shall be deemed to include any and all consultation by David Feldman USA with attorneys with respect to all matters arising out of a delinquent account.

22. Unless exempted by law, a purchaser shall pay New York State sales tax or any additional sales or compensating use tax levied by his home state.

Jurisdiction

Bidding shall constitute acceptance of these terms of sale. In the event a dispute cannot be resolved, all matters arising out of this auction shall be governed by the laws of the State of New York without giving effect to the choice of law principles thereof.

Any controversy or claim arising out of or relating to this auction shall be settled by arbitration in the City of New York, State of New York in accordance with the Rules of the American Arbitration Association and judgment upon the award rendered by the Arbitrator(s) may be entered in any Court having jurisdiction.

The purchaser at this auction a) consents and submits to the jurisdiction of the Courts of the State of New York and of the Courts of the United States for a judicial district within the territorial limits of the State of New York for all matters arising out of this auction sale, including, without limitation, any action or proceeding instituted for the enforcement of any right, remedy, obligation and liability arising under or by reason thereof; and b) consents and submits to the venue of such action or proceeding in the City and County of New York (or such judicial district of a Court of the United States as shall include the same).

David Feldman USA presents the live multi-location auction

Participate at home "LIVE"

David Feldman pioneered the opportunity for its clients to bid "live" at its auctions by a simple click on the Internet.

Log in at www.davidfeldmanusa.com and practice our simulation system to prepare yourself for online bidding in our next auction series.

Sellers can also follow the journey and results of their consignment and join in the excitement of participating in the sale of their property lot by lot as the auction hammer adjudicates each item.



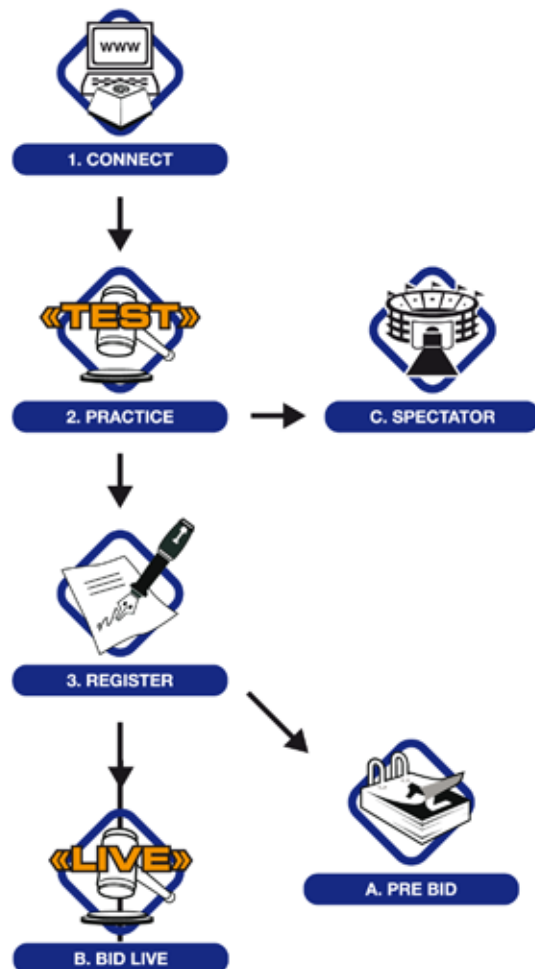
How to bid live by Internet at the David Feldman USA auction

1. **CONNECT** by logging on to our site at: www.davidfeldmanusa.com
2. **PRACTICE** by trying out the simulator preparing you for the LIVE auction
3. **REGISTER** by choosing your own user name and password (you only need to register once - for all transactions)
- A. **PRE-BID** by e-mailing your bids in advance in order to be sure not to miss lots. Pre bidding closes one day before the auction
- B. **BID LIVE** by simply following your lot on the screen and bid instantaneously with others worldwide
- C. **SPECTATORS ONLY!** Follow the auction live but with no opportunity to bid

Bidders please note:

1. Every Internet bidder is automatically awarded a credit limit of US \$20'000. If more is required before the sale just send us an E-Mail at: "bids@davidfeldmanusa.com" mentioning the new desired credit limit. During the sale you can ask to increase your credit limit through the "Finance" page of the Live Auction Software. Please note that in this case a few minutes could be needed to receive the answer.
2. Please click on the bid button as early as possible for your FIRST BID in the bidding as it may take a moment to connect via the server due to the different Internet connection speeds around the world. Once your bid is relayed the auctioneer notes an Internet presence and will delay the bidding at the end giving you a chance to finalize your bid.
3. When and only when there is an Internet bidder the display will show GOING GOING GONE! in sequence confirming the end of the

- bidding. You must get your final bid through at the moment of the display of the first GOING.
4. Sometimes several Internet bids may be made at the same moment. The server accepts the first bid received and ignores the others at the same price. This explains why you may have bid but the next bid is NOT for you. Please bid again immediately.
5. Because of persons who have missed lots because of auction speed, we strongly urge you to E-Mail us a listing of all lots or groups of lots on which you may bid (no obligation), so the auctioneer may be aware. We also suggest you to give us a phone number where we can reach you during the sale in case of any difficulties. If you need help in any way during the sale, please call us immediately on 212-997-9200 and we will help you as best we can. Be advised if a lot is missed then it may not be possible to reopen the bidding.



Staff



Andrew Kupersmit (CEO)
Philatelist and auctioneer



Gabriel Ramirez
Philatelist



Nakia Davis
Administration

David Feldman USA LLC, like David Feldman SA of Switzerland, is part of the Feldman Frey Philatelic Group.

Please contact our office in NYC for full details.

David Feldman USA
108 West 39th Street, 8th Floor
New York, NY 10018

Phone: 212-997-9200
Fax: 212-997-9222
Email: info@davidfeldmanusa.com

Please also visit us online at www.davidfeldmanusa.com

INTRODUCTION TO THE HAROLD KASS COLLECTION

I first met Harold at the beginning of my career in 1995 or 1996. At the time, he was working for a local US stamp dealer and always wore a gray sports coat, sweater vest, shirt and tie and of course that warm smile that those of us who genuinely enjoy people and enjoy what they are doing.

This collection was Harold's pride and joy, and having worked in the hobby, he understood the importance of mint United States stamps being Never Hinged and having Philatelic Foundation certificates.

Harold also liked major errors, and assembled an outstanding collection containing a number of transition multiples and a number of rare and elusive items. Again, his focus was on Never Hinged and every item has a Philatelic Foundation certificate.

Harold stopped collecting about ten years ago and he passed away a few years ago. His family wanted a one-owner catalogue, and we are pleased to be able to do it for them.

As for me, I'm quite pleased to be back in the stamp auction business. Although it must seem that I can't keep a job, even when I'm the boss! I'd like to thank my former colleagues at H.R. Harmer for moving away and opening the door for Gabriel Ramirez and Nakia Davis to join the team. I am grateful to Jonas Bregenzer and his team at Sagelsdorff in Switzerland for their help with our website, advertisements and other graphics related tasks. And of course I am grateful to David Feldman and Rico Baumgartner of the Feldman Frey Philatelic Group for this opportunity, and to David's staff in Geneva for their patience and support in looking after me on my visits to Switzerland and in helping us get up and running in New York.

- Andy Kupersmit

The Harold Kass Collection of US Stamps and Major Errors

STAMPS



10000	*	5c Red Brown, Reissue, full margins at sides, large at top and bottom, lovely fresh color on nicely blued paper, Very Fine and choice, a pretty stamp, with 1993 PF certificate.	3	800
10001	*	1c Bright Blue, without gum as issued, beautifully centered on bright white paper, very light small backstamp does not show through, Extremely Fine, with 1985 PF certificate.	40	625
10002	*	3c Brown Rose, original gum, lightly hinged, fresh paper with long even perforations all around, Very Fine, with 1976 PF certificate.	56	550



10003	**	1c Blue, pristine Never Hinged gum, lovely deep shade and a detailed impression on brilliant white paper with long full perforations all around, post-office fresh and Very Fine, 1987 PF Certificate, Scott Catalogue as hinged.	63	350
10004	*	3c Scarlet, original gum, small hinge mark at top, lovely shade on fresh paper, single pulled perforation at bottom right is barely noticeable, centered to lower right as are many original gum examples, still Fine and very elusive in original gum condition.	74	7,000
10005	*	3c Rose, E. Grill, original gum, lightly hinged at bottom right, strong and complete grill impression, fresh and Fine, 1991 PF Certificate.	88	1,100



10006	**	3c 1869 Issue, Never Hinged with wide selvage at bottom, bright and post-office fresh, Very Fine, 1991 PF Certificate, Scott Catalogue as hinged.	114	325
--------------	----	---	-----	------------



10007 * 12c 1869 Issue, original gum, lightly hinged, rich color and proof-like impression on bright white paper, Very Fine. 117 **2,500**

10008 * 1c 1869 Re-issue, original gum, deep shade on radiant paper with long full perfs around, fresh and Very Fine, 1992 PF Certificate. 123 **650**



10009 * 24c 1869 Re-issue, original gum, small hinge mark at very top leaves vast majority of the gum in pristine condition, gorgeous colors appearing to have been printed only yesterday, an exceptionally fresh and Fine example, 1991 PF Certificate. 130 **2,500**



10010 * 1c 1869 Re-issue on Soft Paper, original gum, fresh color and paper, small magenta backstamp does not show thru, Very Fine, 1991 PF Certificate. 133 **350**

10011 * 2c National Without Grill, original gum, couple hinge marks, deep rich color, uncharacteristically long full perfs all around, Very Fine, 1991 PF Certificate. 146 **375**



10012 * 3c Continental, a gorgeous single with full top selvage and partial plate number, original gum with a tiny disturbance at top that would be easy for a pro to fix, deep rich color and a proof-like impression on crisp white paper with long full perfs all around, Extremely Fine, a stunning stamp. 158 **130**



10013	*	6c Continental, original gum, couple hinge marks, nicely centered on fresh paper with long full perfs all around, Very Fine and choice, 1990 PF Certificate, a pretty stamp.	159	475
--------------	---	--	-----	------------

10014	*	2c Vermilion, Continental Issue, original gum, hinge mark at top, nicely centered, vivid color with long full perfs all around, an exceptionally fresh stamp, Very Fine, 1988 PF Certificate.	178	425
--------------	---	---	-----	------------



10015	**	5c Taylor, Continental Issue, a stunning Never Hinged single with part imprint at top, deep dark color and proof-like impression on crisp paper, selvage with faults, Very Fine, 1988 PF Certificate, Never Hinged examples of this issue are very rare and command big prices; for example, the Scarsdale sale featured a top imprint single (looks like this stamp's former neighbor on the left) with very comparable centering and it realized \$3,750 hammer; Scott Catalogue as hinged.	179	800
--------------	----	---	-----	------------



10016	**	1c American, Never Hinged, lovely bright color on radiant white paper with long even perforations, Very Fine, 1984 PF Certificate.	182	1,100
--------------	----	--	-----	--------------

10017	**	5c Taylor, American Issue, Never Hinged, bright color on fresh paper, Very Fine, 1991 PF Certificate.	185	1,850
--------------	----	---	-----	--------------



10018	*	10c American Issue with Secret Mark, original gum, very narrow hinge mark at top, deep rich color and a sharp proof-like impression on brilliant white paper, Very Fine, 1992 PF Certificate.	188	2,250
--------------	---	---	-----	--------------



10019	*	90c American, original gum, barest trace of hinging at lower right so difficult to see it is obvious why Harold sent it to both expert committees, bright color, fresh and Very Fine, 1991 PF and 2000 PSE Certificates, an outstanding stamp.	191	2,500
--------------	---	--	-----	--------------

10020	*	5c Brown Garfield, original gum, barest trace of gum disturbance at the base of two perfs at top right prevent this from being called Never Hinged, which it is for 99.99% of its area, fresh color and paper, Fine, 1991 PF Certificate.	205	300
--------------	---	---	-----	------------



10021	**	6c Rose, Re-engraved, pristine Never Hinged Gum with a few very tiny gum skips at bottom, absolutely gorgeous color nicely contrasted by the bright paper upon which it is printed, post-office fresh and Very Fine, 1989 PF Certificate, this is a very rare issue to find in Never Hinged condition -- in over a decade of keeping computerized records, Siegel has offered exactly ONE Never Hinged example (twice -- once in 2000 and again in 2002); those who only want Never Hinged will greatly regret not buying this stamp.	208	3,000
--------------	----	---	-----	--------------



10022	**	6c Deep Brown Red, Re-engraved, perfect Never Hinged gum, fabulous color and a detailed proof-like impression, Very Fine and as fresh as the day it was printed, 1991 PF Certificate, this too is a challenging issue to find in Never Hinged condition as it appears once or twice a year and most other examples have comparable centering.	208a	2,100
--------------	----	---	------	--------------



10023	**	2c Pale Red Brown, Special Printing, absolutely pristine Never Hinged gum, rich color on fresh white paper, Very Fine and choice, 1986 PF Certificate, a pretty stamp.	211B	950
--------------	----	--	------	------------





10024	**	4c Carmine, a Never Hinged bottom part imprint single with perfect gum, deep shade and proof-like impression on bright white paper with long full perfs all around, Fine, copy of 1988 PF Certificate for plate strip, a post-office fresh stamp.	215	725
10025	**	5c Garfield, Blue, Never Hinged, deep shade and crisp impression, post-office fresh and Fine, 1989 PF Certificate.	216	900
10026	*	90c Purple, original gum, lightly hinged at top, well-centered within balanced margins, rich color and proof-like impression, Extremely Fine, 1991 PF Certificate, a beautiful stamp.	218	1,100
10027	**	2c Carmine with Cap on Both "2's", Never Hinged, intense color, small translucency and very tiny pinhole in head visible when held to light, appears Fine, with 1993 PF Certificate simply stating "It is genuine", a scarce stamp in Never Hinged condition.	220c	2,000



10028	**	10c Columbian, pristine Never Hinged gum, sharp impression on bright white paper with long full perfs all around, post-office fresh and Very Fine, 1992 PF Certificate.	237	400
--------------	-----------	---	-----	------------



10029	**	15c Columbian, Never Hinged, dark color on brilliant white paper, choice centering, fresh and Very Fine, 1993 PF Certificate.	238	750
--------------	-----------	---	-----	------------



10030	*	30c Columbian, original gum, lightly hinged at top, beautifully centered with wide margins all around, bright and fresh, Extremely Fine, 1979 PF Certificate, a spectacular stamp.	239	275
--------------	----------	--	-----	------------



10031	*	50c Columbian, original gum, lightly hinged, very well-centered, deep dark color, Very Fine and choice, 1994 PF Certificate.	240	575
--------------	---	--	-----	------------



10032	*	\$1.00 Columbian, original gum, lovely salmon shade, almost perfectly centered with nicely balanced margins, bright and fresh, Extremely Fine, 1992 PF Certificate.	241	1,100
--------------	---	---	-----	--------------



10033	*	\$2.00 Columbian, original gum, three hinge marks at top center, deep shade on bright white paper with full even perfs all around, very tiny scuff at top center not noted on certificate, otherwise Very Fine, 1992 PF Certificate.	242	1,150
--------------	---	--	-----	--------------



10034	*	\$3.00 Columbian, original gum, rich color on bright paper, fresh and Fine, 1999 PF Certificate.	243	1,800
--------------	---	--	-----	--------------



10035	*	\$4.00 Columbian, Rose Carmine, original gum, hinge marks, lovely pastel shade nicely contrasted by the gleaming white paper upon which it is printed, perfectly centered top to bottom, Very Fine, 1999 PF Certificate.	244a	2,500
--------------	---	--	------	--------------



10036	*	\$5.00 Columbian, original gum, few hinge marks, lovely charcoal shade, precisely centered, Very Fine, 2000 PF Certificate, a lovely stamp.	245	2,900
--------------	---	---	-----	--------------



10037	**	2c Carmine Type II Unwatermarked, Never Hinged, intense color on bright white paper, exceptionally well-centered for this issue, Very Fine, 1987 PF Certificate, a lovely stamp.	251	1,100
--------------	-----------	--	-----	--------------

10038	**	8c Violet Brown Unwatermarked, Never Hinged with wide left selvage, intense dark color and proof-like impression, post-office fresh, Very Fine and choice.	257	525
--------------	-----------	--	-----	------------



10039	**	10c Dark Green Unwatermarked, Never Hinged with part imprint in wide top selvage, deep shade on crisp white paper, post-office fresh and Fine, 1989 PF Certificate.	258	1,000
--------------	-----------	---	-----	--------------

10040	**	15c Dark Blue Unwatermarked, Never Hinged, deep shade and sharp impression on bright white paper, post-office fresh and Very Fine, 1987 PF Certificate.	259	1,000
--------------	-----------	---	-----	--------------



10041	**	\$1.00 Black, Unwatermarked, Types I and II, Never Hinged horizontal pair, gorgeous dark color on bright paper, weak perfs with a couple seps at top, Fine-Very Fine, 1980 APS Certificate, originally printed in sheets of 2 panes of 100 with one pane all Type I and the other with left five columns Type I and right five columns Type II, there were only 10 pairs per sheet of two panes, very few have survived intact in sound Never Hinged condition. Scott Catalogue for hinged.	261-261A	4,250
--------------	-----------	---	----------	--------------



10042	*	\$2.00 Bright Blue, Unwatermarked, original gum, small hinge mark at left center, well-centered with uncharacteristically wide margins on three sides, wonderful deep color on very fresh crisp paper, Very Fine and choice, copy of 1968 PF Certificate for block, this being the bottom right stamp, a beautiful example of this challenging issue.	262	3,250
--------------	----------	---	-----	--------------



- | | | | | |
|--------------|---|--|-----|--------------|
| 10043 | * | \$5.00 Marshall, Unwatermarked, original gum, lightly hinged, deep rich color on fresh crisp paper, Fine-Very Fine, 1991 PF Certificate, this issue is very difficult to obtain in sound fresh original gum condition. | 263 | 5,000 |
|--------------|---|--|-----|--------------|



- | | | | | |
|--------------|----|--|-----|------------|
| 10044 | ** | 15c Dark Blue, Watermarked, pristine Never Hinged gum, perfectly centered with balanced margins on all sides, deep rich color and a sharp impression, Extremely Fine, 1991 PF Certificate, a superb stamp. | 274 | 750 |
|--------------|----|--|-----|------------|

- | | | | | |
|--------------|---|--|-----|------------|
| 10045 | * | 50c Orange, Watermarked, original gum, very lightly hinged, precisely centered within even borders, vivid color, Very Fine, 1993 PF Certificate. | 275 | 300 |
|--------------|---|--|-----|------------|



- | | | | | |
|--------------|----|---|-----|--------------|
| 10046 | ** | \$1.00 Black, Type I, Watermarked, Never Hinged stamp with plate no. 76 in wide hinged top selvage, deep dark color and a detailed proof-like impression, exceptionally fresh and Very Fine, 1990 PF Certificate. | 276 | 2,200 |
|--------------|----|---|-----|--------------|



- | | | | | |
|--------------|---|---|------|--------------|
| 10047 | * | \$1.00 Black, Type II, Watermarked, original gum showing only the barest trace of hinging at top, deep shade nicely contrasted by the bright paper upon which it is printed, proof-like impression, Very Fine, 1986 PF Certificate. | 276A | 1,500 |
|--------------|---|---|------|--------------|



10048	*	\$2.00 Bright Blue, Watermarked, original gum, barely hinged (if at all), fresh color and sharp impression on bright white paper, Fine-Very Fine, 1993 PF Certificate.	277	1,100
--------------	---	--	-----	--------------



10049	*	\$5.00 Dark Green, Watermarked, original gum, lightly hinged, choice centering, fresh and Very Fine, 1982 PF Certificate, a pretty stamp.	278	2,400
--------------	---	---	-----	--------------



10050	**	4c Trans-Mississippi, Never Hinged, exceptionally well-centered with balanced margins top to bottom and side to side, Extremely Fine, 1991 PF Certificate, an outstanding stamp.	287	400
--------------	----	--	-----	------------

10051	**	5c Trans-Mississippi, Never Hinged, stunning dark color and detailed impression, almost perfectly centered, post-office fresh and Extremely Fine, a superb stamp, with 1993 PF Certificate.	288	400
--------------	----	---	-----	------------



10052	**	8c Trans-Mississippi, Never Hinged, deep shade and detailed proof-like impression on bright paper, post-office fresh and Very Fine, 1992 PF Certificate for block of four, this being the bottom right stamp.	289	600
--------------	----	---	-----	------------

10053	**	10c Trans-Mississippi, Never Hinged, detailed impression appearing to have been printed yesterday, Very Fine, 1991 PF Certificate.	290	550
--------------	----	--	-----	------------



10054	*	50c Trans-Mississippi, original gum, lightly hinged at top, rich color and detailed impression, well-centered within uncharacteristically wide margins, Very Fine, 1990 PSE certificate, a large stamp.	291	700
--------------	---	---	-----	------------



10055	**	\$1.00 Trans-Mississippi, Never Hinged with wide left selvage and part arrow, dark color, post-office fresh and Very Fine, 1983 PF Certificate, a beautiful stamp.	292	3,900
--------------	----	--	-----	--------------



10056	*	\$2.00 Trans-Mississippi, original gum, detailed impression on crisp white paper, Fine, 1990 PF Certificate.	293	2,100
--------------	---	--	-----	--------------



10057	**	4c Pan-American, pristine Never Hinged gum, well-centered, long full perfs all around, Very Fine, 1993 PF Certificate.	296	200
--------------	----	--	-----	------------

10058	**	5c Pan-American, Never Hinged, bright and fresh, Very fine, 1993 PF Certificate.	297	225
--------------	----	--	-----	------------

10059	**	8c Pan-American, Never Hinged, deep dark colors on bright white paper, choice centering, post-office fresh and Extremely Fine, 1990 PF Certificate, a beautiful stamp.	298	280
--------------	----	--	-----	------------

10060	**	10c Pan-American, post-office fresh Never Hinged gum, rich colors, well-centered, Very Fine-Extremely Fine, 1993 PF Certificate.	299	360
--------------	----	--	-----	------------



10061	**	50c Orange 1902-03 Issue, Never Hinged with plate no. 1602 in wide bottom selvage, vivid color on gleaming white paper, post-office fresh and Fine, 1993 PF Certificate.	310	1,400
--------------	-----------	--	-----	--------------



10062	**	\$1.00 Black, 1902-03 Issue, Never Hinged, deep shade and sharp impression on brilliant white paper, Very Fine, 1984 PF Certificate, a large stamp.	311	2,100
--------------	-----------	---	-----	--------------



10063	**	\$2.00 Dark Blue 1902-03 Issue, Never Hinged with left selvage, lovely shade and a crisp impression on bright white paper, exceptionally fresh and Fine, 1993 PF certificate.	312	3,500
--------------	-----------	---	-----	--------------



10064	*	\$5.00 Dark Green 1902-03 Issue, lightly hinged, deep rich color and a crisp detailed impression on gleaming white paper, Very Fine and choice, 1978 PF Certificate, a very pretty stamp.	313	2,800
--------------	----------	---	-----	--------------



10065	**	5c Lincoln Imperf, Never Hinged, deep shade, wide margins all around, Extremely Fine.	315	390
--------------	-----------	---	-----	------------

10066	*	10c Louisiana Purchase, lightly hinged at top, perfectly centered with even margins all around, rich color on fresh paper, sharp impression, Extremely Fine, 1983 PF Certificate.	327	160
--------------	----------	---	-----	------------



10067	**	5c Pilgrim, a Never Hinged gem, perfectly centered with wide margins for this notoriously small-margined issue, bright color and a proof-like impression, Extremely Fine, 1993 PF Certificate, a superb stamp in every respect.	330	350
--------------	-----------	---	-----	------------

10068	**	50c Washington Perf 12 Double Line Watermark, Never Hinged, deep shade and sharp impression, Very Fine, 2001 PSE Certificate.	341	800
--------------	-----------	---	-----	------------



10069	**	50c Washington Perf 12 Double Line Watermark, Never Hinged, lovely color on bright paper, well-centered, Very Fine and choice, 1992 PF Certificate.	341	800
--------------	-----------	---	-----	------------

10070	**	5c Washington Perf 12 Double Line Watermark Vertical Coil, Never Hinged pair, dark color, post-office fresh and intact, Very Fine, 2002 PSE Certificate, an attractive coil pair.	351	950
--------------	-----------	---	-----	------------



10071	**	5c Washington Perf 12 Double Line Watermark Horizontal Coil, Never Hinged guide line pair, bright color and detailed impression, Very Fine, 1990 PSE Certificate.	355	3,250
--------------	-----------	---	-----	--------------



10072	*	10c Washington Perf 12 Double Line Watermark Horizontal Coil, single hinge mark at top center, vivid color, fresh and Very Fine example of this always challenging issue, 1992 PF Certificate.	356	3,250
--------------	---	--	-----	--------------



10073	**	3c Bluish Paper, Never Hinged with post-office fresh gum, dark color on nicely blued paper, tiny inclusion on gum barely shows through, Fine-Very Fine, 1991 PF Certificate stating simply "It is genuine".	359	4,500
--------------	----	---	-----	--------------



10074	*	6c Bluish Paper, lightly hinged, bright color on deeply blued paper, fresh and Fine-Very Fine, copy of 1988 PF for block of four and 1990 PSE Certificates.	362	1,500
--------------	---	---	-----	--------------

10075	*	10c Bluish Paper, small h.r. at top right, vivid color on fresh blue paper, well-balanced margins, Very Fine, 1972 PF Certificate.	364	1,900
--------------	---	--	-----	--------------



10076	*	13c Bluish Paper, lightly hinged, gorgeous deep rich color on nicely blued paper, fresh and Fine, 1994 PF Certificate.	365	3,000
--------------	---	--	-----	--------------



10077	*	15c Bluish Paper, barest trace of hinging at top left, fresh color on nicely blued paper, Fine-Very Fine, 1981 PF Certificate for block of four, this being the top right stamp.	366	1,500
--------------	---	--	-----	--------------



- | | | | | |
|--------------|-----------|---|-----|------------|
| 10078 | ** | 10c Washington Perf 12 Single Line Watermark, Never Hinged, gorgeous vivid color, remarkably well-centered with wide margins for this issue, Extremely Fine, 1987 PF Certificate. | 381 | 250 |
| 10079 | * | 15c Washington Perf 12 Single Line Watermark, barest trace of hinging (if at all) at top right, lovely shade on gleaming white paper, exceptionally well-centered, Extremely Fine, 1990 PSE and 1992 PF Certificates. | 382 | 275 |



- | | | | | |
|--------------|-----------|--|-----|------------|
| 10080 | ** | 1c Franklin Perf 12 Single Line Watermark Vertical Coil, Never Hinged pair, deep rich color and a sharp impression on bright white paper, intact perfs, Fine-Very Fine, 1992 PF Certificate. | 385 | 240 |
| 10081 | ** | 2c Washington Perf 12 Single Line Watermark Vertical Coil, Never Hinged pair, well-centered, bright color on radiant white paper, overall Very Fine with the top stamp an Extremely Fine Gem, 1987 PF Certificate. | 386 | 650 |



- | | | | | |
|--------------|-----------|--|-----|--------------|
| 10082 | ** | 1c Franklin Perf 12 Single Line Watermark Horizontal Coil, Never Hinged pair with 3mm spacing, dark color on bright white paper, post-office fresh and intact, Very Fine, 1999 PF Certificate, an outstanding coil pair. | 387 | 1,100 |
|--------------|-----------|--|-----|--------------|



10083	**	1c Franklin Perf 8Ω Vertical Coil, Never Hinged guide line pair, intense color, beautifully centered on brilliant white paper, Extremely Fine, 2002 PF Certificate.	390	80
--------------	----	---	-----	-----------

10084	**	2c Washington Perf 8Ω Vertical Coil, Never Hinged guide line pair, deep shade, post-office fresh and intact, Very Fine, 1996 PF Certificate.	391	575
--------------	----	--	-----	------------

10085	**	1c Franklin Perf 8Ω Horizontal Coil, Never Hinged guide line pair, bright color, as fresh as the day it was printed, Fine-Very Fine, 1995 PF Certificate.	392	425
--------------	----	---	-----	------------



10086	**	2c Washington Perf 8Ω Horizontal Coil, Never Hinged guide line pair, rich color and a sharp proof-like impression, Fine-Very Fine, 1995 PF Certificate.	393	650
--------------	----	---	-----	------------

10087	**	5c Washington Perf 8Ω Horizontal Coil, Never Hinged pair, deep dark color on bright white paper, remarkably well-centered, Extremely Fine, 1990 PF Certificate, a beautiful pair.	396	375
--------------	----	---	-----	------------



10088	**	10c Pan-Pacific, Perf 10, Never Hinged with pristine gum, radiant shade, post-office fresh and Very Fine, 1988 PF Certificate.	404	2,000
--------------	----	--	-----	--------------



10089	**	1c Washington Perf 8Ω Horizontal Coil, Never Hinged pair, perfectly centered, dark color, Extremely Fine, 1990 PF Certificate, a superb pair.	412	130
--------------	----	---	-----	------------



10090	**	2c Washington Perf 8 1/2 Horizontal Coil, Never Hinged guide line pair, rich color, Fine-Very Fine, 1994 PF Certificate.	413	625
--------------	-----------	--	-----	------------



10091	**	8c Franklin Perf 12 Single Line Watermark, Never Hinged left plate no. 5718 single with wide selvage, beautifully centered, post-office fresh, Extremely Fine, 1988 PF Certificate.	414	110
--------------	-----------	---	-----	------------

10092	**	50c Franklin Perf 12 Single Line Watermark, Never Hinged, bright color on radiant white paper with long full perfs, Very Fine, 1977 PF Certificate for block of four, this being the top left stamp.	421	1,000
--------------	-----------	--	-----	--------------



10093	**	50c Franklin Perf 10 Single Line Watermark, Never Hinged, fresh and bright, well-centered, Very Fine and choice, 1984 PF Certificate for block of four, this being the top left stamp.	440	1,300
--------------	-----------	--	-----	--------------



10094	**	2c Washington Perf 10 Single Line Watermark Horizontal Coil, Never Hinged guide line pair, deep rich color on bright white paper, Very Fine, 1993 PF Certificate.	444	700
--------------	-----------	---	-----	------------



10095	**	2c Washington Perf 10 Single Line Watermark Horizontal Coil, Never Hinged guide line pair, exceptionally well-centered, deep crimson shade nicely contrasted by the brilliant white paper upon which it is printed, Extremely Fine, 1990 PF Certificate.	444	700
--------------	-----------	--	-----	------------



10096	*	3c Washington Perf 10 Single Line Watermark Horizontal Coil, lightly hinged guide line pair, deep dark shade and detailed proof-like impression, Fine-Very Fine, 1995 PF Certificate.	445	1,300
--------------	---	---	-----	--------------

10097	**	4c Washington Perf 10 Single Line Watermark Horizontal Coil, Never Hinged pair, lovely charcoal shade and a sharp impression, post-office fresh and intact, Very Fine, 1996 PF Certificate, Never Hinged pairs are surprisingly elusive.	446	700
--------------	----	--	-----	------------



10098	**	5c Washington Perf 10 Single Line Watermark Horizontal Coil, Never Hinged pair, gorgeous color, sharp impression, Very Fine, 1991 PF Certificate.	447	240
--------------	----	---	-----	------------

10099	**	1c Washington Perf 10 Rotary Single Line Watermarked Vertical Coil, Never Hinged pair, deep rich color, exceptionally well-centered, Extremely Fine.	448	40
--------------	----	--	-----	-----------

10100	**	1c Washington Perf 10 Rotary Single Line Watermarked Horizontal Coil, Never Hinged joint line pair, remarkably fresh and intact, Extremely Fine.	452	160
--------------	----	--	-----	------------



10101	**	2c Washington Type II Perf 10 Rotary Single Line Watermarked Horizontal Coil, Never Hinged joint line pair, rich color, post-office fresh and Very Fine, 1994 PF Certificate.	454	900
--------------	----	---	-----	------------

10102	**	3c Washington Type I Perf 10 Rotary Single Line Watermark Horizontal Coil, Never Hinged joint line pair, detailed proof-like impression on brilliant paper, exceptionally fresh and intact, Very Fine and choice, 1995 PF Certificate, Scott 456 line pairs in Never Hinged condition appear about 2 to 3 times per year at public auction.	456	2,600
--------------	----	---	-----	--------------



- | | | | | |
|--------------|-----------|--|-----|------------|
| 10103 | ** | 4c Washington Type I Perf 10 Rotary Single Line Watermark Horizontal Coil, Never Hinged joint line pair, rich color, remarkably well-centered on bright white paper, Extremely Fine, 1994 PSE Certificate. | 457 | 325 |
| 10104 | ** | 5c Washington Type I Perf 10 Rotary Single Line Watermark Horizontal Coil, Never Hinged joint line pair, deep dark shade, post-office fresh, Very Fine, 1995 PF Certificate. | 458 | 375 |



- | | | | | |
|--------------|-----------|--|-----|--------------|
| 10105 | ** | \$1.00 Franklin Perf 10 Double Line Watermark, Never Hinged, dark color on brilliant paper, post-office fresh and Fine, 1993 PF Certificate. | 460 | 1,900 |
|--------------|-----------|--|-----|--------------|



- | | | | | |
|--------------|-----------|---|-----|------------|
| 10106 | ** | 10c Franklin Perf 10 Unwatermarked, Never Hinged, choice centering with uncharacteristically wide margins, vivid color on radiant white paper, Extremely Fine, 1992 PF Certificate, a stunning stamp. | 472 | 250 |
| 10107 | * | 20c Franklin Perf 10 Unwatermarked, small hinge mark at top right, precise centering within balanced margins, Extremely Fine, 1994 PF Certificate. | 476 | 250 |



- | | | | | |
|--------------|-----------|---|-----|--------------|
| 10108 | ** | 50c Franklin Perf 10 Unwatermarked, Never Hinged, post-office fresh color, gum and paper, Fine-Very Fine, with 1990 PF Certificate, a tough issue to find in centered Never Hinged condition. | 477 | 2,400 |
|--------------|-----------|---|-----|--------------|



- | | | | | |
|--------------|-----------|--|-----|--------------|
| 10109 | ** | \$1.00 Franklin Perf 10 Unwatermarked, Never Hinged, beautiful deep shade contrasted by the brilliant white paper upon which it is printed, post-office fresh, Extremely Fine, 1989 PSE Certificate for block of four. | 478 | 1,800 |
|--------------|-----------|--|-----|--------------|



10110	**	\$2.00 Madison Perf 10, Never Hinged with left selvage, deep rich color, post-office fresh and Very Fine, 1993 PF Certificate.	479	550
--------------	-----------	--	-----	------------

10111	**	2c Washington Type III Perf 10 Rotary Horizontal Coil, Never Hinged joint line pair, vivid color, well-centered, Extremely Fine, 2002 PSE Certificate.	492	115
--------------	-----------	--	-----	------------



10112	** 田	1c A.E.F. Booklet Pane, Never Hinged, remarkably fresh and intact, dark color, Very Fine-Extremely Fine, 1995 PF Certificate, one of the better centered examples we've seen.	498f	1,800
--------------	-------------	---	------	--------------



10113	**	2c Washington Deep Rose Type I Perf 11, a stunning Never Hinged single featuring gorgeous color and superior centering within wide margins for this notoriously challenging issue, Extremely Fine, 1993 PF Certificate.	500	600
--------------	-----------	---	-----	------------



10114	** 田	5c Error, Perf 11, two error stamps in center of block of twelve, Never Hinged, deep rich color, post-office fresh and intact, Very Fine, 1990 PF Certificate.	505	2,150
--------------	-------------	--	-----	--------------



10115	** 田	5c Error, Perf 11, bottom center stamp in block of six, Never Hinged, rich color, fresh and intact, Fine-Very Fine.	505	675
--------------	------	---	-----	------------



10116	*	\$1.00 Deep Brown, lightly hinged, rich color on bright white paper, a small supply of this distinctive shade was produced and the majority are off center in two directions unlike this Very Fine example, 1967 PF (for block of four - top right) and 1998 PSE Certificates.	518b	1,800
--------------	---	--	------	--------------



10117	*	\$2.00 Orange Red and Black, lightly hinged, bright and fresh, Fine, 1993 PF Certificate.	523	600
--------------	---	---	-----	------------

10118	**	1c Washington Rotary Perf 11, Never Hinged, perfectly centered, rich color and as fresh as the day it was printed, Extremely Fine, 1982 PF Certificate, an outstanding stamp.	545	475
--------------	----	---	-----	------------

10119	**	\$2.00 Carmine and Black, Never Hinged, gorgeous color on bright white paper, Very Fine, copy of 1987 PF Certificate for block of four with plate no., this being the bottom right stamp.	547	330
--------------	----	---	-----	------------



10120	**	2c Carmine Type II Perf 11 x 10 1/2, Never Hinged, gorgeous color, post-office fresh and Very Fine, 1993 PF Certificate.	634A	625
--------------	----	--	------	------------

10121	**	2c Yorktown, Dark Lake & Black, Never Hinged with right selvage, unmistakable lake shade, Fine-Very Fine, 1993 PF Certificate for sheet.	703b	750
--------------	----	--	------	------------



- 10122** → ** * 65c-\$2.60 Graf Zeppelin, 65c and \$2.60 Never Hinged, \$1.30 lightly hinged, 65c with wide top selvage, fresh colors, Very Fine, each with 1993 PF Certificate, a very attractive and well-centered set. C13-C15 **2,075**



- 10123** * 10c Special Delivery, 1888 Issue, original gum, barest trace of hinge (if at all) at top left, well-centered and exceptionally fresh, Very Fine and choice, 1993 PF Certificate, a beautiful stamp. E2 **500**
- 10124** * 10c Special Delivery, Line under "Ten Cents", Unwatermarked, two small hinge marks in top right and bottom right corners, lovely deep shade on fresh paper, well-centered, Very Fine and choice, 1996 PF Certificate. E4 **850**
- 10125** * 10c Special Delivery, Perf 10 Unwatermarked, small light hinge mark in top right corner leaving the vast majority of the gum in its original pristine state, perfectly centered within massive margins, Extremely Fine, 1993 PF Certificate, a superb stamp E10 **320**



- 10126** ** 1c Brown Postage Due, Never Hinged, post-office fresh color and paper, choice centering, Extremely Fine. J1 **275**
- 10127** ** 2c Brown Postage Due, Never Hinged with pristine gum, choice centering, Very Fine, 1983 PF Certificate. J2 **1,100**
- 10128** * 5c Brown Postage Due, original gum, lightly hinged, precisely centered within nicely balanced margins, Very Fine, 2000 PF Certificate. J4 **825**



10129	*	30c Brown Postage Due, original gum, very lightly hinged, deep shade on post-office fresh paper with long full perfs all around, Very Fine, 1986 PF Certificate.	J6	400
--------------	---	--	----	------------

10130	*	50c Brown Postage Due, original gum, lightly hinged, exceptionally well-centered within even margins, lovely deep shade, Extremely Fine, 1990 PF Certificate, a beauty.	J7	650
--------------	---	---	----	------------



10131	**	1c Red Brown Postage Due, Never Hinged, dark color and a proof-like impression on crisp paper, Extremely Fine.	J15	200
--------------	----	--	-----	------------

10132	**	2c Red Brown Postage Due, Never Hinged, perfectly centered with mathematically even margins all around, deep rich color, post-office fresh, Extremely Fine, 1987 PF Certificate.	J16	250
--------------	----	--	-----	------------



10133	*	3c Red Brown Postage Due, original gum, lightly hinged, rich color on bright white paper, fresh and Very Fine, 2000 PF Certificate.	J17	1,150
--------------	---	---	-----	--------------



10134	*	5c Red Brown Postage Due, original gum, hinge mark at center, gorgeous color and a proof like impression on bright fresh paper, Very Fine, 1988 PF Certificate.	J18	625
--------------	---	---	-----	------------

10135	*	10c Red Brown Postage Due, original gum, lightly hinged, dark color on brilliant white paper, Very Fine, 1992 PF Certificate.	J19	625
--------------	---	---	-----	------------

10136	**	30c Red Brown Postage Due, Never Hinged, deep shade on bright white paper with long full perfs, fresh and Very Fine, 1990 PF Certificate.	J20	550
--------------	----	---	-----	------------



10137	*	50c Red Brown Postage Due, original gum, very lightly hinged at top left, deep dark color on fresh white paper, Very Fine, copy of 1991 PF Certificate for pair, this being the right stamp.	J21	1,150
--------------	---	--	-----	--------------



10138	**	30c Bright Claret Postage Due, Never Hinged, beautiful bright color nicely contrasted by the brilliant white paper upon which it is printed, post-office fresh and Very Fine, 1988 PF Certificate, a pretty stamp seldom seen in Never Hinged condition.	J27	1,900
--------------	----	--	-----	--------------



10139	*	50c Bright Claret Postage Due, original gum, single hinge mark at top center, deep rich color on bright white paper, remarkably fresh and Fine, 1991 PF Certificate.	J28	700
--------------	---	--	-----	------------



10140	**	2c Vermilion Postage Due, Never Hinged, lovely textbook Vermilion shade and a proof-like impression, post-office fresh and Fine, 1991 PF Certificate.	J30	2,100
--------------	----	---	-----	--------------



10141	**	5c Deep Claret Double Line Watermark Postage Due, Never Hinged, rich color and detailed impression, usual offset on gum, Very Fine, 2002 PF Certificate.	J34	1,000
--------------	----	--	-----	--------------



- | | | | | |
|--------------|----|--|------|--------------|
| 10142 | ** | 30c Pale Rose Double Line Watermark Postage Due, Never Hinged, post-office fresh with long full perfs, Fine, 1993 PF Certificate. | J36b | 1,250 |
| 10143 | ** | 30c Pale Rose Double Line Watermark Postage Due, Never Hinged, fresh color on radiant white paper, Fine, 2002 PF Certificate. | J36b | 1,250 |
| 10144 | * | 50c Pale Rose Double Line Watermark Postage Due, original gum, lightly hinged, typical centering but without the faults that plague so many other examples of this issue, fresh and Fine, 1993 PF Certificate. | J37a | 1,800 |



- | | | | | |
|--------------|----|--|-----|------------|
| 10145 | ** | 3c Deep Claret Double Line Watermark Postage Due, Never Hinged, dark color on bright paper, a well-centered beauty, Extremely Fine, 1992 PF Certificate. | J40 | 275 |
| 10146 | ** | 5c Deep Claret Double Line Watermark Postage Due, Never Hinged with plate no. 255 in wide top selva, dark color and sharp impression on radiant paper, Very Fine, copy of 1990 PF Certificate for plate block. | J41 | 300 |
| 10147 | ** | 10c Deep Claret Double Line Watermark Postage Due, Never Hinged, in every respect, this is as fresh as the day it was sold over a post office counter over a century ago, Very Fine, 1992 PSE Certificate. | J42 | 300 |



- | | | | | |
|--------------|---|--|-----|------------|
| 10148 | * | 30c Deep Claret Double Line Watermark Postage Due, original gum, lightly hinged at top, Fine-Very Fine example of this challenging issue, 1991 PF Certificate. | J43 | 700 |
| 10149 | * | 50c Deep Claret Double Line Watermark Postage Due, original gum, very lightly hinged, intense color on crisp paper, Fine, 1991 PF Certificate. | J44 | 450 |



- | | | | | |
|--------------|----|--|-----|--------------|
| 10150 | ** | 3c Deep Claret Perf 12 Single Line Watermark Postage Due, Never Hinged, dark color nicely contrasted by the brilliant white paper upon which it is printed, Fine-Very Fine, 1985 PF Certificate. | J47 | 1,750 |
| 10151 | * | 10c Deep Claret Perf 12 Single Line Watermark Postage Due, original gum that would have been called never hinged by previous standards but will never get such a certificate today, deep rich color, well-centered, Extremely Fine, 1991 PF Certificate. | J49 | 140 |
| 10152 | * | 50c Deep Claret Perf 12 Single Line Watermark Postage Due, original gum described as previously hinged by the PF in 1998 but we don't see anything except pristine Never Hinged gum (but since we are selling certs not stamps we, ll sell it as hinged), lovely deep shade, Very Fine, 1998 PF Certificate. | J50 | 1,150 |



- | | | | | |
|--------------|----|--|-----|--------------|
| 10153 | * | 50c Deep Claret Perf 12 Single Line Watermark Postage Due, original gum, lightly hinged, fresh appearing and Fine, 1992 PF Certificate. | J50 | 1,150 |
| 10154 | ** | 1c Carmine Lake Perf 10 Single Line Watermark Postage Due, pristine Never Hinged gum, brilliant shade on bright fresh paper with full perforations all around, post-office fresh and Extremely Fine, 1991 PF Certificate, a superb stamp in every respect. | J52 | 260 |



- | | | | | |
|--------------|----|---|-----|---------------|
| 10155 | ** | 1c Rose, Postage Due, Never Hinged, bright and fresh, Fine, a challenging issue to find in Never Hinged condition, 1990 PSE Certificate. | J59 | 10,000 |
| 10156 | ** | 2c Rose, Postage Due, Never Hinged, perfectly centered, lovely textbook Rose shade, post-office bright and fresh, an Extremely Fine Gem, 1989 PF Certificate, the buyer of this stamp will have a very difficult time upgrading this one. | J60 | 850 |



10157	**	30c Carmine Rose Perf 11, Never Hinged, perfectly centered with even margins, bright color on brilliant paper, Extremely Fine, 1991 PF Certificate, a beautiful stamp.	J66	260
--------------	-----------	--	-----	------------

10158	**	30c Deep Claret Perf 11, Never Hinged, well-centered with wide margins at sides, deep shade and proof-like impression on crisp paper, Extremely Fine, 1989 PF Certificate.	J66a	260
--------------	-----------	--	------	------------

10159	**	50c Carmine Rose Perf 11, Never Hinged, precisely centered with even margins all around, diagonal gum bend not noted on certificate, Extremely Fine, 1992 PSE Certificate.	J67	370
--------------	-----------	--	-----	------------



10160	**	\$1.00 on 50c Offices in China, Never Hinged, beautifully centered with balanced margins, rich color, Extremely Fine, 1980 PF Certificate, this is one of the better centered Never Hinged examples of this notoriously difficult issue.	K15	1,300
--------------	-----------	--	-----	--------------

10161	**	\$1.00 Parcel Post, Never Hinged, intense color, well centered, a post-office fresh gem, Very Fine and choice, 1993 PSE Certificate.	Q12	850
--------------	-----------	--	-----	------------

10162	(*)	(1c) Franklin Carrier Reprint, without gum as issued, part imprint at left and full even margins other three sides, fresh and Extremely Fine, 1992 PF Certificate.	L03	50
--------------	------------	--	-----	-----------

10163	** *	Balance of the Kass Collection, 1851-1929, sporadically filled to the 1890 issue, few used incl. Nos. 17 (pen cancel removed), 69, 70 (3), 71, 72 (2), 76, unused incl. Nos. 36, 36b, 38, 63, 73, 68, 77, 93, 112, 118, 119, 163, 211, 214 (NH), 220a, 221-224, 227, 230-236, 246-250, 251-256, 260, 264-273, 279-284, 300-309, 323-326, 331-337, 339, 340, 342, 357, 358, 369, 374-381, 397-403, 415-420, 422, 423, 424-438, 459, 461, 462-466, 468-471, 473-475, 480, 506-518, 524, Offsets complete except 534B, 541, 546, 548-550, 551-573, 578, 579, 581-591, 595, 630, 658-679, plus 832b (3), C1-C6, E1, E3, E5-E9, E11, J3, J22-J26, J31, J32, J48, J56 (2 shades), J57, K1-K14, K16-K18, Q1-Q11, JQ1-JQ5, QE1-QE4, coil pairs incl. Nos. 394, 395, 443, 450, 455, 487-489, 495, line pairs incl. Nos. 490, 492, 493, 496, 497, some coil singles, pairs and line pairs not counted, in one Lindner hingeless album, 1851-1869 issues are in mixed condition, Bank Notes and later issues are generally sound and fresh with many Never Hinged, overallly Fine-Very Fine incl. 34 width mostly 1980's and 1990's PF certificates.	Est. 10,000 - 15,000
--------------	-------------	---	-----------------------------

MAJOR ERRORS



10164	*	2c Red Brown, Horizontal Pair, Imperforate Between, with part imprint in top selvage, original gum, very lightly hinged, well centered, fresh and sharp impression, Very Fine, 1998 PF Certificate, according to Datz less than 25 pairs are reported to exist.	211Bc	2,000
-------	---	---	-------	-------



10165	(*)	1c Washington, Imperforate Booklet Pane of Six, all known examples are without gum, Extremely Fine, 1997 PF Certificate, Datz states that 60 Imperforate booklets are reported to exist	424e	2,000
-------	-----	---	------	-------



10166	**	3c Washington, Vertical Pair, Imperforate Between, Never Hinged, sharp impression, Very Fine, 1990 PF Certificate.	720c	1,400
-------	----	--	------	-------



10167	**	5c Kosciuszko, Horizontal Pair, Imperforate Vertically, Never Hinged, Very Fine, 1995 PF Certificate, only one pane of 100 stamps is known to exist according to Datz.	734a	2,800
--------------	-----------	--	------	--------------



10168	**	3c Parks, Vertical Strip of Three, Imperforate Horizontally, Never Hinged, Very Fine, 1995 PF Certificate, Datz states that one pane is reported to exist, priced by Scott Catalogue only as a pair.	742a	1,200
--------------	-----------	--	------	--------------

10169	**	7c Parks, Horizontal Pair, Imperforate Vertically, Never Hinged, Very Fine, 1999 PF Certificate, 50 pairs reported to exist.	746a	1,050
--------------	-----------	--	------	--------------



10170	**	\$1 Wilson, Vertical Pair, Imperforate Horizontally, Never Hinged, Very Fine, 1996 PF Certificate, one to two panes of 100 reported.	832a	1,500
--------------	-----------	--	------	--------------



Detail

10171	☒	1c Washington, Partially Imperforate Strip of Four, affixed but not cancelled, on cover to Cincinnati, left stamp with vertical perfs through design and faulty, right strip of three imperforate, accompanied by second cover with all four stamps misperforated, Very Fine, 1988 APS Certificate, Very Rare, only thirteen pairs reported by Datz, Scott Catalogue for pair.	1054b	2,500
--------------	----------	--	-------	--------------



- | | | | | |
|--------------|-----------|--|-------|--------------|
| 10172 | ** | 2c Jefferson, Imperforate Pair, Never Hinged, fresh color, Very Fine, 1996 PF Certificate, 100 pairs reported by Datz. | 1055c | 550 |
| 10173 | ** | 4c San Martín, Horizontal Pair, Imperforate Between, Never Hinged, Fine-Very Fine, 1999 PF Certificate, Rare, only twenty pairs reported to exist. | 1125a | 1,250 |
| 10174 | ** | 5c American Music, Blue Omitted, Never Hinged, Extremely Fine, 1996 PF Certificate, Datz states 20-40 examples reported. | 1252a | 850 |



- | | | | | |
|--------------|-----------|--|--------|--------------|
| 10175 | ** | 6c Roosevelt, Imperforate Vertical Pair, Never Hinged, Very Fine, 1997 PF Certificate, only 25-30 pairs are reported by Datz. | 1298a | 1,900 |
| 10176 | ** | 5c Washington, Imperforate Pair, Never Hinged, Extremely Fine, 1996 PF Certificate, Datz states that 50-60 pairs are known to exist. | 1304Cd | 575 |



- | | | | | |
|--------------|-----------|---|--------|--------------|
| 10177 | ** | \$1 O'Neill, Imperforate Pair, Never Hinged, Very Fine, 1997 PF Certificate, 50 pairs are reported by Datz. | 1305Cd | 1,850 |
| 10178 | ** | 6c HemisFair, White Omitted, Never Hinged, Very Fine, 1996 PF Certificate, Datz states 100 examples are known to exist. | 1340a | 1,100 |



- | | | | | |
|--------------|-----------|--|-------|------------|
| 10179 | ** | 6c Walt Disney, Ocher Omitted, Never Hinged, Extremely Fine, 1993 PF Certificate, 400-500 examples reported by Datz. | 1355a | 500 |
| 10180 | ** | 6c Walt Disney, Vertical Pair, Imperforate Horizontally, Never Hinged, Very Fine, 1993 PF Certificate, Datz states that 50 pairs are known to exist. | 1355b | 600 |
| 10181 | ** | 6c Walt Disney, Imperforate Pair, Never Hinged with top right corner selvage, Extremely Fine, 1997 PF Certificate, Datz states 100 pairs are known to exist. | 1355c | 500 |



- | | | | | |
|--------------|-----------|--|-------|--------------|
| 10182 | ** | 6c Walt Disney, Black Omitted, Never Hinged with right selvage, Extremely Fine, 1998 PF Certificate, 35 examples reported by Datz. | 1355d | 1,850 |
| 10183 | ** | 6c Walt Disney, Horizontal Pair, Imperforate Between, Never Hinged, Extremely Fine, 1995 PF Certificate, Extremely Rare, Datz states that only five pairs are known to exist, an important acquisition for the serious Walt Disney topical collection. | 1355e | 4,500 |
| 10184 | ** | 6c Walt Disney, Blue Omitted, Never Hinged, Extremely Fine, 1996 PF Certificate, 35 examples reported by Datz. | 1355f | 1,850 |



10185	**	6c Christmas, Imperforate Pair, Never Hinged, Extremely Fine, 1976 PF Certificate, Datz states that only 25 pairs have been reported to exist.	1384b	800
--------------	----	--	-------	------------

10186	**	6c Christmas, Green, Red & Yellow Omitted, Never Hinged, Very Fine, 1996 PF Certificate, Datz states that 50-60 unused examples are known to exist.	1384d	700
--------------	----	---	-------	------------



10187	**	6c Christmas, Yellow Omitted, Never Hinged, Very Fine, 1995 PF Certificate, Datz states this stamp is Very Rare.	1384e	2,000
--------------	----	--	-------	--------------

10188	**	6c Christmas, Red & Yellow Omitted, Never Hinged, Very Fine, 1996 PF Certificate, Datz states this stamp is Very Rare.	1384g	2,750
--------------	----	--	-------	--------------



10189	**	6c Christmas, Blue Omitted, Transition Pair, precanceled, Never Hinged, right stamp the error, left stamp blue mostly omitted, Very Fine, 1989 APS Certificate, very rare with only fifteen examples reported to exist.	1414c	1,450
--------------	----	---	-------	--------------

10190	**	6c Pilgrims, Orange & Yellow Omitted, Never Hinged, Extremely Fine, 1994 PF Certificate, 200 examples known to exist according to Datz.	1420a	700
--------------	----	---	-------	------------



10191	** 田	8c Wildlife Conservation, Light & Dark Green Omitted, Never Hinged with right selvage, Very Fine, 1998 PF Certificate, very rare -- Datz states that only eight blocks exist.	1430b	4,500
--------------	------	---	-------	--------------



10192	**	8c Bicentennial, Transition Vertical Pair, Top Stamp Black & Gray Omitted, Bottom Stamp Gray Omitted, bottom stamp black partially omitted, Never Hinged, Very Fine, 1997 PF Certificate, Very Rare, according to Datz, 100-150 examples of the top stamp are known to exist while the quantity of gray omitted examples is stated to be "rare". In addition, there is a footnote in Datz stating that the gray omitted error "often occurs in pairs or larger multiples with gray completely omitted from one stamp, and gray and black partially omitted from others. They sell for a premium."	1432a-b	1,500
10193	**	8c Space Achievement, Blue & Red Omitted, Never Hinged, tiny gum disturbances from mount not mentioned on the certificate, Very Fine, 1997 PF Certificate, Datz states that 40 pairs & ten singles have been reported.	1435d	1,250



10194	**	8c Emily Dickinson, Black & Olive (Engr.) Omitted, Never Hinged, Extremely Fine, 1992 PF Certificate, Datz states that 150 examples reported to exist.	1436a	600
--------------	----	--	-------	------------

10195	** 田	8c Historic Preservation, Black Brown Omitted, Never Hinged with top right selvage, Very Fine, 1998 PF Certificate, according to Datz only sixteen blocks of four reported to exist.	1443b	1,650
--------------	------	--	-------	--------------



10196	**	2c Cape Hatteras, Black (Litho.) Omitted, Never Hinged with top selvage, Very Fine, 1998 PF Certificate, 25 blocks of four reported by Datz.	1451b	1,400
--------------	----	--	-------	--------------

10197	**	8c Tom Sawyer, Red & Black Omitted, Never Hinged, Extremely Fine, 1996 PF Certificate, Datz states 150 stamps known to exist.	1470b	1,350
--------------	----	---	-------	--------------



10198	**	8c Christmas, Black Omitted, Transition Strip of Three, Never Hinged, left stamp black completely missing, center stamp black partially omitted & right stamp normal, Extremely Fine, 1996 PF Certificate, according to Datz only ten pairs reported with black omitted on one stamp.	1471b	3,250
--------------	----	---	-------	--------------



10199	**	8c Pharmacy, Blue & Orange Omitted, Never Hinged, Very Fine, 1997 PF Certificate, Datz states that 150 examples are reported to exist.	1473a	700
--------------	----	--	-------	------------

10200	**	8c Stamp Collecting, Black (Litho.) Omitted, Never Hinged, Very Fine, 1993 PF Certificate, Datz states that 80-100 examples known to exist.	1474a	500
--------------	----	---	-------	------------



10201	** 田	8c Boston Tea Party, Black (Engr.) Omitted, Block, Never Hinged with bottom left corner selvage, Very Fine, 1995 PF Certificate, according to Datz 32 blocks of four reported, including one without gum	1483b	1,100
--------------	------	--	-------	--------------

10202	** 田	8c Boston Tea Party, Black (Litho.) Omitted, Never Hinged with right selvage, Very Fine, 1995 PF Certificate, 32 blocks of four reported by Datz.	1483c	1,100
--------------	------	---	-------	--------------



10203	**	8c Copernicus, Orange Omitted, Never Hinged with top selvage, Very Fine, 1992 PF Certificate, 100 stamps known to exist according to Datz.	1488a	850
--------------	----	--	-------	------------

10204	**	8c Copernicus, Black (Engr.) Omitted, Never Hinged, Extremely Fine, 1998 PF Certificate, Datz states than 100 examples are known to exist.	1488b	875
--------------	----	--	-------	------------



10205	**	15c Electronics, Black Omitted, Never Hinged, Very Fine, 1995 PF Certificate, Datz states that 50 examples exist.	1502a	1,250
10206	**	8c Cattle, Green & Red Brown Omitted, Never Hinged, Very Fine, 1996 PF Certificate, 100 examples are reported to exist.	1504a	800
10207	**	10c Rural America, Black & Blue (Engr.) Omitted, Never Hinged with left selvage, Very Fine, 1993 PF Certificate, 100 stamps are known to exist according to Datz.	1506a	650



10208	**	10c Flags, Imperforate Vertical Pair, Never Hinged, Extremely Fine, 1995 PF Certificate, Datz states that 35-60 pairs are known to exist.	1509c	850
10209	**	10c Horse Racing, Blue Omitted, Never Hinged with top selvage, Very Fine, 1995 PF Certificate, 50-100 examples are known to exist.	1528a	800



10210	** 田	10c Minerals, Blue & Yellow Omitted, Never Hinged, Very Fine, 1991 PF Certificate, Datz states that 24-28 blocks of four are known to exist.	1541b	1,700
10211	**	10c Kentucky Settlement, Dull Black (Engr.) Omitted, Never Hinged, Very Fine, 1995 PF Certificate, Datz states that 100-150 stamps exist, including two plate blocks.	1542a	650



- | | | | | |
|--------------|-----------|---|-------|--------------|
| 10212 | ** | 10c Kentucky Settlement, Green, Black & Blue Omitted, Transition Strip of Three, Never Hinged, left stamp normal, center stamp colors partially omitted, right stamp the error, Very Fine, 1999 PF Certificate, Datz states that 29 examples have been reported, including those in strips. | 1542b | 3,000 |
|--------------|-----------|---|-------|--------------|



- | | | | | |
|--------------|-----------|--|-------|------------|
| 10213 | ** | 10c Energy Conservation, Blue & Orange Omitted, Never Hinged, Very Fine, 1995 PF Certificate, Datz states that approximately 100 examples exist. | 1547a | 800 |
| 10214 | ** | 10c Energy Conservation, Orange & Green Omitted, Never Hinged but slightly disturbed gum, Very Fine, 1992 PF Certificate, 150-200 examples reported by Datz. | 1547b | 500 |
| 10215 | ** | 10c Energy Conservation, Green Omitted, Never Hinged with top left corner selva with everyone's hero Mr. Zip, Very Fine, 1994 PF Certificate, Datz states that approximately. 100 examples are known to exist. | 1547c | 800 |



- | | | | | |
|--------------|----|--|-------|------------|
| 10216 | ** | 10c Griffith, Brown (Engr.) Omitted, Never Hinged, Very Fine, 1992 PF Certificate, Datz states that 100-150 examples exist. | 1555a | 625 |
| 10217 | ** | 10c Pioneer, Dark Blue (Engr.) Omitted, Never Hinged, Very Fine, 1993 PF Certificate, 200 examples are reported to exist. | 1556b | 750 |
| 10218 | ** | 10c Mariner 10, Red Omitted, Never Hinged, Very Fine, 1991 PF Certificate, Datz states that 300-400 exist of this popular space issue. | 1557a | 375 |



- | | | | | |
|--------------|----|---|----------------|--------------|
| 10219 | ** | 10c Apollo Soyuz, Vertical Pair, Imperforate Horizontally, Never Hinged, couple tiny gum disturbances from the mount not mentioned on the certificate, Very Fine, 1997 PF Certificate, Datz states that 24-36 pairs are known to exist. | 1570c | 2,100 |
| 10220 | ** | 10c Postal Service 200th Anniversary, Red "10c" Omitted, Two Vertical Se-tenant Pairs, Never Hinged, one pair 1572 & 1574, other pair 1573 & 1575, Very Fine, 1998 PF Certificates, very rare with a mere six to eight blocks of four & two pairs being noted by Datz, Scott catalogue for block of four. | 1572-1575 vars | 7,500 |



- | | | | | |
|--------------|----|---|-------|--------------|
| 10221 | ** | 10c Banking & Commerce, Brown, Blue & Yellow (Litho.) Omitted, Pair, Never Hinged with left selvage, Very Fine, with copy of 1991 PF certificate for unique pane of 40 which was broken into sixteen pairs & eight singles. | 1578c | 2,500 |
| 10222 | ** | 13c Liberty Bell, Vert Pair, Imperforate Between, Never Hinged, Extremely Fine, 1996 PF Certificate, Datz calls this stamp scarce. | 1595e | 1,250 |
| 10223 | ** | 7.9c Drum, Imperforate Pair, Never Hinged, Extremely Fine, 1992 PF Certificate, 100 pairs reported in Datz. | 1615b | 550 |
| 10224 | ** | 13c Bicentennial, Imperforate Se-Tenant Strip of Three, Never Hinged, Extremely Fine, 1992 PF Certificate, Datz states that three panes of 50 were found yielding 45 possible strips of three and fifteen stamps as singles or pairs. | 1631b | 850 |

10225	**	13c-31c Bicentennial Souvenir Sheets, Value Omitted, Never Hinged "set", 1686g "USA 13c" omitted on "a" & "e", 1687g "USA 18c" omitted on "a" & "c", 1688g "USA 24c" omitted on "d" & "e", 1689g "USA 31c" omitted on "a" & "c", Very Fine, 1995-98 PF Certificates, Datz states that these sheets are rare to very rare. (NO PHOTO)	1686g-1689g	1,900
--------------	----	--	-------------	--------------



10226	**	13c, 18, 24c Bicentennial Souvenir Sheets, Value Omitted, Never Hinged, 1686i "USA 13c" omitted on "b", "c" & "d", 1687i "USA 18c" omitted on "d", 1688i "USA 24c" omitted on "a", "b" & "c", Very Fine, 1995-97 PF Certificates, Datz states that these sheets are rare to very rare.	1686i-1688i	1,425
--------------	----	--	-------------	--------------



10227	**	18c, 31c Bicentennial Souvenir Sheets, Value Omitted, Never Hinged, 1687h "USA 18c" omitted on "b", "d" & "e", 1689h "USA 31c" omitted on "b", "d" & "e", Very Fine, 1997-98 PF Certificates, Datz states that these sheets are rare.	1687h, 1689h	950
--------------	----	---	--------------	------------



10228	△ ⊙	31c Bicentennial Souvenir Sheet, Value Omitted, "USA 31c" omitted on "e", tied to page by Philadelphia May 29, 1976 first day duplex postmark, Very Fine, a very rare item not mentioned in Datz.	1689i	Est. 200-300
--------------	-----	---	-------	---------------------



10229	**	31c Bicentennial Souvenir Sheet, Black Omitted in design, Never Hinged, Very Fine, 1995 PF Certificate, Datz states that this sheet is very rare.	1689j	1,500
--------------	----	---	-------	--------------



- | | | | | |
|--------------|------|--|-------|------------|
| 10230 | ** 田 | 13c Olympics, Imperforate, Never Hinged, Very Fine, 1994 PF Certificate, Datz that 200+ blocks of four have been reported. | 1698b | 575 |
| 10231 | ** | 13c American Bicentennial, Pair, Imperforate Vertically, Never Hinged with top selva, Very Fine, 1993 PF Certificate, Datz states that 20-40 pairs are known to exist. | 1704a | 500 |
| 10232 | ** | 13c Lindbergh Flight, Imperforate Vertical Pair, Never Hinged, Very Fine, 1994 PF Certificate, Datz states that 85-100 pairs have been reported. | 1710a | 850 |



- | | | | | |
|--------------|----|---|-------|--------------|
| 10233 | ** | 13c Carl Sandburg, Vertical Pair, Brown Omitted, the bottom stamp in a Never Hinged pair with top stamp normal, Very Fine, 1995 PF Certificate, Datz states that only ten stamps are known to exist, usually in a transition pair or strip. | 1731a | 2,250 |
|--------------|----|---|-------|--------------|



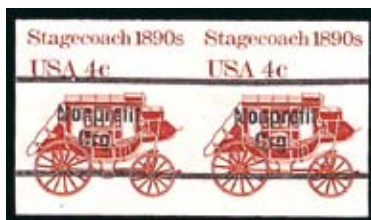
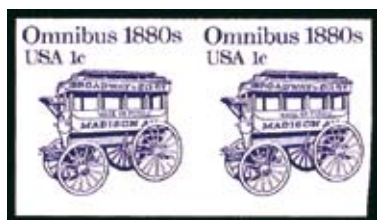
- | | | | | |
|--------------|----|---|-------|------------|
| 10234 | ** | 15c Christmas, Vertical Pair, Imperforate Horizontally, with blind perfs on right selvage, Never Hinged, Very Fine, 1997 PF Certificate, according to Datz only ten to fifteen pairs are reported . Seems undervalued given the low supply. | 1799b | 600 |
| 10235 | ** | 15c Christmas, Green, Yellow & Tan Omitted, Never Hinged with left selvage, Fine (as are all examples), 1998 PF Certificate, 250 examples are reported to exist. | 1800b | 500 |
| 10236 | ** | 15c Christmas, Green, Yellow & Tan Omitted, Never Hinged, Fine (as are all examples), 1993 PSE Certificate, 250 examples are reported to exist. | 1800b | 500 |



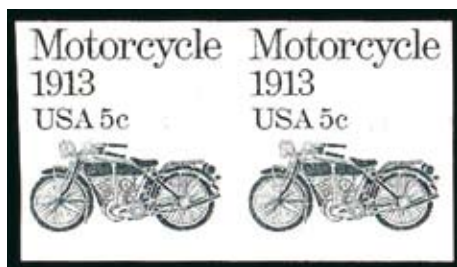
- | | | | | |
|--------------|----|--|-------|--------------|
| 10237 | ** | 15c Galvez, Blue, Brown, Red Omitted, Never Hinged, Extremely Fine, 1996 PF Certificate, Datz states that 50 examples are known to exist. | 1826a | 650 |
| 10238 | ** | 15c Galvez, Blue, Brown, Red & Yellow Omitted, Never Hinged, Extremely Fine, 1999 PF Certificate, Datz states that 50 examples are known to exist. | 1826b | 1,150 |



- | | | | | |
|--------------|-----------|---|-------|--------------|
| 10239 | ** | 1c Dorothea Dix, Vertical Strip of Three, Bottom Pair Imperforate Between, Never Hinged with undisturbed gum, natural straight edge at bottom as are all known examples, Very Fine, 1997 PSE Certificate, Datz states that only four to six pairs are known to exist, and that slightly disturbed gum is the norm for this issue. | 1844b | 1,900 |
| 10240 | ** | 6c Lippmann, Vertical Pair, Imperforate Between, Never Hinged, natural straight edge at bottom as are all known examples, Very Fine, 1990 PF Certificate, according to Datz, only ten pairs are known to exist - and all are from the bottom of one sheet. | 1849a | 1,900 |
| 10241 | ** | 39c Clark, Vertical Pair, Imperforate Horizontally, Never Hinged, Very Fine, 1995 PF Certificate, 30-50 pairs reported. | 1867a | 500 |
| 10242 | ** | 39c Clark, Vertical Pair, Imperforate Between, Never Hinged, top and bottom diagonal freak perfs, Very Fine, 1991 PF Certificate for block, this being left pair, Datz states that 30-50 pairs have been reported to exist. | 1867b | 1,850 |



- | | | | | |
|--------------|-----------|---|--------|------------|
| 10243 | ** | 1c Omnibus, Imperforate Pair, Never Hinged, Very Fine, 1995 PF Certificate, 150-250 pairs exist according to Datz. | 1897b | 550 |
| 10244 | ** | 4c Stagecoach, Imperforate Pair, precanceled, Never Hinged, Extremely Fine, 1995 PF Certificate, 50-75 pairs exist according to Datz. | 1898Ac | 700 |
| 10245 | ** | 4c Stagecoach, Imperforate Pair, Never Hinged, Extremely Fine, 1992 PF Certificate, 150 pairs are reported by Datz. | 1898Ad | 750 |



- | | | | | |
|--------------|----|--|-------|--------------|
| 10246 | ** | 5c Motorcycle, Imperforate Pair, Never Hinged, Extremely Fine, 1997 PF Certificate, only 32 pairs exist according to Datz. | 1899a | 2,500 |
| 10247 | ** | 17c Electric Auto, Imperforate Pair, precanceled, Never Hinged, Very Fine, 1994 PF Certificate, Datz states that 60-80 pairs have been reported. | 1906c | 550 |



- | | | | | |
|--------------|----|---|-------|--------------|
| 10248 | ** | 20c Christmas, Vertical Pair, Imperforate Horizontally, Never Hinged, blind vertical perfs, Very Fine, 1993 PF Certificate, only four to five pairs reported in Datz. Seems undervalued given the supply. | 1939b | 1,150 |
| 10249 | ** | 20c Science & Industry, Black (Engraved) Omitted, Never Hinged, Extremely Fine, 1994 PF Certificate, Datz states that 40 are known to exist. | 2031a | 1,250 |
| 10250 | ** | 20c Woodson, Horizontal Pair, Imperforate Vertically, Never Hinged, Very Fine, 1997 PF Certificate, Datz states that 25 pairs have been reported to exist. | 2073a | 1,150 |



- | | | | | |
|--------------|------|---|-------|--------------|
| 10251 | ** 田 | 20c Smokey Bear, Block of four, Imperforate Between Vertically & Horizontally, Never Hinged, Very Fine, 1999 PF Certificate, Datz states that only six blocks of four exist, including one faulty block, a very rare major error. | 2096c | 5,000 |
|--------------|------|---|-------|--------------|



10252	**	20c Smokey Bear, Horizontal Pair, Imperforate Vertically, Never Hinged with bottom right corner selvage, Very Fine, 1995 PF Certificate, Datz states that only 20-25 pairs exist.	2096d	1,250
10253	**	22c Sea Shells, Violet Omitted on two stamps of top pane in a complete unexploded booklet containing two panes of ten stamps with the bottom pane normal, Never Hinged, Very Fine, 1994 PF Certificate, Datz reports 75-100 panes exist.	2121b	550
10254	**	22c Sea Shells, Vertically Imperforate Between, complete unexploded booklet containing two error panes of ten stamps, Never Hinged, Very Fine, 1996 PF Certificate, 30-40 booklets are reported by Datz.	2121c	500
10255	**	22c Love, Imperforate Pair, Never Hinged, Extremely Fine, 1999 PF Certificate, Datz states that only fifteen pairs are known to exist.	2143a	1,250

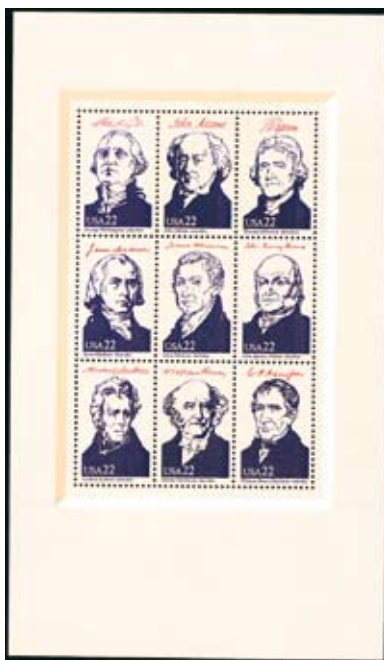


10256	**	18c Washington, Imperforate Pair, Never Hinged, Very Fine, 1996 PF Certificate, 30-40 pairs are reported by Datz.	2149b	875
10257	**	18c Washington, Imperforate Pair, precanceled, Never Hinged, Very Fine, 1994 PF Certificate, 50-100 pairs are reported to exist by Datz.	2149c	675
10258	**	22c Republic of Texas, Horizontal Pair, Imperforate Vertically, Never Hinged, Very Fine, 1997 PF Certificate, only 25 pairs are reported by Datz.	2204a	900



Photo of original pane
(courtesy Jacques C. Schiff, Jr., Inc.)

10259 **	22c Republic of Texas, Dark Blue Omitted, Transition Strip of Four, Pos. 37-40, left pair normal, 3rd stamp with dark blue partially omitted and right stamp the error, Never Hinged, Very Fine, 1995 PF Certificate for the unique pane of 50, an extremely rare stamp with only two examples known to exist - pos. 40 and 50. Despite being a 1986 issue, the intact pane first appeared in the market at a 1996 Schiff Compex auction where it fetched \$12,500 hammer. The highlight of the error section of the Kass collection.	2204c 8,000
-----------------	---	--------------------



10260	**	22c Duke Ellington, Vertical Strip of Three, Imperforate Horizontally, Never Hinged, Extremely Fine, 1996 PF Certificate, 40-60 pairs reported to exist by Datz. Scott Catalogue for pair.	2211a	800
--------------	----	--	-------	------------

10261	**	22c Ameripex Souvenir Sheet, Black Selvage Text Omitted, Never Hinged, including normal sheet for comparison, Very Fine, including photocopy of 1990 PF Certificate, Datz states that this sheet is rare.	2216k	2,000
--------------	----	---	-------	--------------



10262	**	22c Ameripex Souvenir Sheet, Black Selvage Text Omitted, Never Hinged, including normal sheet for comparison, Very Fine, 1995 PF Certificate, Datz states that this sheet is rare.	2217j	2,500
--------------	----	--	-------	--------------

10263	**	22c Ameripex Souvenir Sheet, Black Selvage Text Omitted, Never Hinged, Very Fine, 1994 PF Certificate, including normal sheet for comparison, Datz states that this sheet is rare.	2218k	2,500
--------------	----	--	-------	--------------



10264	** 田	22c American Folk Art, Imperforate Vertically, Never Hinged, Very Fine, 1996 PF Certificate, Datz states only twenty blocks of four are reported to exist.	2243b	1,250
10265	**	22c Christmas, Imperforate Pair, Never Hinged, Very Fine, 1999 PF Certificate, Datz states that 25-50 pairs have been reported to exist.	2244a	600
10266	**	22c Pan-American Games, Silver Omitted, Never Hinged, Fine (as are all examples), 1996 PF Certificate, Datz states that only 30 examples have been reported.	2247a	1,500



10267	**	22c Caruso, Black (Engr.) Omitted, Transition Strip of Three, Never Hinged with top selvaige, left stamp normal, center stamp with black partially omitted & right stamp the error, Fine-Very Fine, 1996 PF Certificate, Extremely Rare, Datz reports that only ten examples are known to exist.	2250a	5,000
--------------	----	--	-------	--------------



10268	**	22c Girl Scouts, Colors Omitted, Never Hinged with bottom right corner selvage, trivial gum imperfections, Extremely Fine, 1994 PF Certificate for pair, this being the right stamp, Datz states that 46 examples are known to exist.	2251a	2,450
--------------	-----------	---	-------	--------------

10269	**	22c Girl Scouts, Black & Red Omitted, Never Hinged, trivial gum imperfection, Fine, 2001 PF Certificate, this is position 35 from the unique sheet of 50.	2251b	1,950
--------------	-----------	---	-------	--------------



10270	**	8.4c Wheel Chair, Imperforate Pair, Never Hinged, Very Fine, 1992 PF Certificate, 100+ pairs are reported by Datz.	2256a	575
--------------	-----------	--	-------	------------

10271	**	15c Tugboat, Imperforate Pair, Never Hinged, Extremely Fine, 1994 PF Certificate, Datz states that 80-100 pairs exist.	2260c	650
--------------	-----------	--	-------	------------

10272	**	17.5c Race Car, Imperforate Pair, Never Hinged, Extremely Fine, 1994 PF Certificate, 26 pairs and three plate strips of six are reported by Datz.	2262b	2,250
--------------	-----------	---	-------	--------------



10273	**	22c Constitution, Black (Engr.) Omitted, Never Hinged, post office fresh with bottom selvage, an extremely rare stamp, Extremely Fine, 1997 PF Certificate, Datz states that only four examples are known to exist.	2338a	5,500
--------------	-----------	---	-------	--------------



- | | | | | |
|--------------|------|---|-------|--------------|
| 10274 | ** 田 | 22c American Folk Art, White Omitted, Never Hinged, Very Fine, 1994 PF Certificate, Datz states that 80 blocks of four & 80 singles have been reported. | 2354b | 550 |
| 10275 | ** | 22c CPA, Black Omitted, Never Hinged, Extremely Fine, infamous Coach Investments Certificate, Datz states that 300-400 examples have been reported. | 2361a | 675 |
| 10276 | ** 田 | 25c Antarctic Explorers, Black Omitted, Never Hinged, Very Fine, 1995 PF Certificate, Datz states that twenty blocks of four & twenty singles are known to exist. | 2389b | 1,250 |



- | | | | | |
|--------------|----|---|-------|--------------|
| 10277 | ** | \$2.40 Moon Landing, Black (Engr.) Omitted, Never Hinged, Very Fine, 1994 PF Certificate, Datz states that 60-80 examples are known to exist. | 2419a | 2,000 |
| 10278 | ** | \$2.40 Moon Landing, Imperforate Pair, Never Hinged, Very Fine, 1994 PF Certificate, Datz states that 200 are known to exist. | 2419b | 650 |
| 10279 | ** | 25c Madonna, Red (Litho) Omitted, Never Hinged with top selvage, Very Fine, 1995 PF Certificate, Datz states 50 examples are known. | 2427b | 650 |

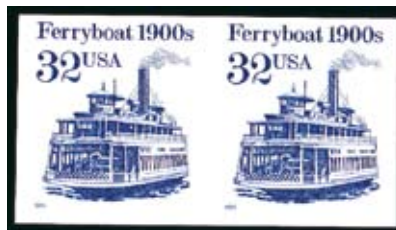


- | | | | | |
|--------------|----|---|-------|--------------|
| 10280 | ** | 25c Christmas, Vertical Pair, Imperforate Horizontally, Never Hinged, Very Fine, 2000 PF Certificate, Datz states that 20+ pairs have been reported. | 2428a | 750 |
| 10281 | ** | 25c Love, Bright Pink Omitted on top pane in complete unexploded booklet containing two panes, bottom pane normal, Never Hinged, some trivial fingerprints on gum, Very Fine, 1990 PF Certificate, Datz states that only twenty panes of ten exist, some of which have been broken for singles. | 2441c | 1,650 |



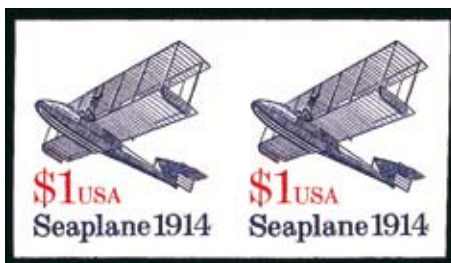
10282	**	15c Beach Umbrella, Blue Omitted, Never Hinged, complete unexploded booklet containing two panes of ten stamps, top pane depicting errors, Very Fine, 1995 PF Certificate, Datz states that 75 panes of ten exist.	2443c	1,250
--------------	-----------	--	-------	--------------

10283	**	25c Wyoming Centenary, Black Omitted, Never Hinged with left selvage, Extremely Fine, 1996 PF Certificate, Datz states that 80 examples are known to exist, ten of which are affixed to cards.	2444a	1,350
--------------	-----------	--	-------	--------------



10284	**	5c Circus Wagon, Imperforate Pair, Never Hinged, Very Fine, 1995 PF Certificate, Datz states that 72-88 pairs exist.	2452c	600
--------------	-----------	--	-------	------------

10285	**	32c Ferryboat, Imperforate Pair, Never Hinged, Very Fine, 1996 PF Certificate, Datz states that 70-80 pairs have been reported to exist.	2466a	500
--------------	-----------	--	-------	------------



10286	**	\$1 Sea Plane, Imperforate Pair, Never Hinged, Extremely Fine, 1998 PF Certificate, Datz states that 54 singles, a strip of nine used & a strip of four used are known to exist.	2468a	2,500
--------------	-----------	--	-------	--------------



10287	**	19c Fawn, Red Omitted, Never Hinged, Very Fine, 1997 PF Certificate, Datz states that 100 examples have been reported.	2479b	725
--------------	----	--	-------	------------

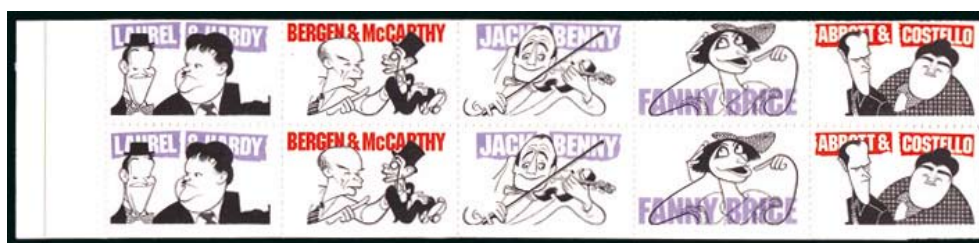
10288	**	25c Micronesia, Marshall Islands, Pair, Black (Engr.) Omitted, Never Hinged, Very Fine, 1996 PF Certificate, Datz states that twenty pairs & twenty singles have been reported.	2507b	2,750
--------------	----	---	-------	--------------



10289	**	25c Christmas, Vertical Pair, Imperforate Horizontally, Never Hinged, Very Fine, 1997 PF Certificate, Datz states that twenty pairs exist (one is faulty).	2515a	1,000
--------------	----	--	-------	--------------

10290	**	50c Switzerland 700th Anniversary, Vertical Pair, Imperforate Horizontally, Never Hinged, Very Fine, 1994 PF Certificate, Datz states that only twenty pairs exist.	2532a	2,250
--------------	----	---	-------	--------------

10291	**	29c Cole Porter, Vertical Strip of three, Imperforate Horizontally, Never Hinged, Very Fine, 1993 PF Certificate, Datz states that 50-60 pairs have been reported, Scott Catalogue for pair.	2550a	500
--------------	----	--	-------	------------



10292	**	29c Comedians, Scarlet & Bright Violet Omitted on top pane with a normal pane below in a complete unexploded booklet, Never Hinged, Very Fine, 1993 PF Certificate, Datz states that 100-150 booklet panes have been reported to exist.	2566b	650
--------------	----	---	-------	------------



10293	**	29c Jan Matzeliger, Vertical Pair, Imperforate Horizontally & Imperforate Pair, Never Hinged, Very Fine, 1996 & 2001 PF Certificates, Datz states that for No. 2567b 40-60 pairs exist & for No. 2567c 100+ pairs exist.	2567b, 2567c	1,675
--------------	-----------	--	--------------	--------------

10294	**	29c Christmas, Red & Black Omitted, Never Hinged, Very Fine, 1995 PF Certificate, Datz states that ten examples exist but one is faulty leaving only nine sound examples.	2578b	3,250
--------------	-----------	---	-------	--------------

10295	**	29c Christmas, Horizontal Pair, Imperforate Vertically & Vertical Pair, Imperforate Horizontally, Never Hinged, Very Fine, 1993 PF Certificates, Datz states for No. 2579a, 80-100 pairs exist & for No. 2579b, 50-80 pairs have been reported.	2579a, 2579b	625
--------------	-----------	---	--------------	------------



10296	**	29c Eagle & Shield, Booklet Pane, Die Cutting Omitted, Never Hinged, Very Fine, 1997 PF Certificate, Datz states that 30-40 panes exist.	2595d	1,150
--------------	-----------	--	-------	--------------

10297	**	29c Alaska Highway, Black (Engr.) Omitted, Never Hinged with top left corner selvage, Very Fine, 1995 PF Certificate, Datz states that 220 examples exist.	2635a	750
--------------	-----------	--	-------	------------



10298	**	Black (Engr.) Omitted, Never Hinged, Very Fine, 2000 PF Certificate, an extremely rare stamp, Datz states that only eight to ten examples exist.	2704a	3,250
--------------	-----------	--	-------	--------------



10299	** 田	Sporting Horses, Black Omitted, Never Hinged, Very Fine, 1994 PF Certificate, Datz states 40-48 blocks of four exist.	2759b	750
--------------	------	---	-------	------------

10300	**	29c Garden Flowers, Imperforate Booklet Pane, Never Hinged, Extremely Fine, 1994 PF Certificate, 12-16 panes reported by Datz.	2764c	1,000
--------------	----	--	-------	--------------



10301	** 田	29c National Postal Museum, Imperforate, Never Hinged, a rare error, Very Fine, 1998 PF Certificate, Datz states that only eight blocks of four & two strips have been reported.	2782c	3,250
--------------	------	--	-------	--------------



10302	**	29c Garden Flowers, Imperforate Booklet Pane, Never Hinged, usual vertical crease between second and third stamps from being part of an intact booklet, Very Fine, sixteen to twenty panes reported by Datz. Scott Catalogue for creased pane.	2833b	1,500
--------------	----	--	-------	--------------



10303	** 田	29c Wonders of the Sea, Imperforate, Never Hinged with top right corner selvage, Very Fine, 1994 PF Certificate, Datz states that 48-60 Imperforate blocks exist.	2866b	1,250
--------------	------	---	-------	--------------



10304	**	29c Whooping Cranes, Black & Magenta (Engr.) Omitted, Never Hinged with right selvage, Very Fine, 1996 PF Certificate, Datz states 30-40 pairs are known to exist.	2868b	1,650
--------------	-----------	--	-------	--------------

10305	**	5c Butte, Imperforate Pair, Never Hinged, Extremely Fine, 1996 PF Certificate, Datz states that 58-80 pairs have been reported.	2902a	600
--------------	-----------	---	-------	------------



10306	**	32c Sports, Imperforate Strip, Never Hinged with plate no. B1111 in bottom & top selvages, Very Fine, 1996 PF Certificate, Datz states that only eight to twelve strips are known to exist	2965b	2,250
--------------	-----------	--	-------	--------------

10307	**	32c Sports, Yellow Omitted, Never Hinged, Very Fine, 1995 PF Certificate, Datz states that only twelve strips have been reported.	2965c	2,000
--------------	-----------	---	-------	--------------

10308	**	32c Sports, Yellow, Blue & Magenta Omitted, Never Hinged, Very Fine, 1995 PF Certificate, Datz states that only eight to sixteen strips have been reported.	2965d	2,000
--------------	-----------	---	-------	--------------



10309	** 田	32c Christmas, Imperforate Block, Never Hinged with bottom left selvage with plate no. P4444, Extremely Fine, 1996 PF Certificate, Datz states that 75+ blocks of four & fifteen strips of four are known to exist.	3007d	550
--------------	-------------	---	-------	------------

10310	**	32c Chinese New Year, Imperforate Pair, Never Hinged with top left corner selvage with plate no. S1111, Extremely Fine, 2000 PF Certificate, Datz states that at least two panes of twenty are known to exist.	3060a	775
--------------	-----------	--	-------	------------





10311	**	32c Christmas, Booklet Pane, Die Cutting Omitted, Extremely Fine, 1999 PF Certificate, Datz states that only six to seven panes have been reported.	3116d	2,100
--------------	----	---	-------	--------------

10312	**	32c Birds, Booklet Pane, Die Cutting Omitted, Extremely Fine, 1998 PF Certificate, Datz states that only fifteen to twenty panes have been reported.	3123c	1,350
--------------	----	--	-------	--------------



10313	**	10c Airmail, Imperforate Pair, Never Hinged, Very Fine, 1992 PF Certificate, Datz states that 100+ pairs are known to exist.	C73a	600
--------------	----	--	------	------------

10314	**	11c National Parks, Blue & Green Omitted, Never Hinged, Very Fine, 1994 PF Certificate, Datz states that 92 examples have been reported to exist.	C84a	750
--------------	----	---	------	------------



10315	**	31c Wright Brothers, Ultramarine & Black Omitted, Vertical Pair, Never Hinged, Very Fine, 1995 PF Certificate, Datz states that 150 pairs have been reported, Very Fine.	C92b	700
--------------	----	--	------	------------

10316	**	31c Wright Brothers, Black, Yellow, Magenta, Blue & Brown Omitted, Vertical Pair, Never Hinged, Very Fine, 1995 PF Certificate, Datz states that only fifteen pairs are known to exist.	C92d	2,250
--------------	----	---	------	--------------

10317	** 田	40c Olympic Games, Imperforate, Never Hinged with top left corner selvage, Extremely Fine, 1996 PF Certificate, Datz states that 30-40 blocks extant.	C108d	1,000
--------------	------	---	-------	--------------



10318	** 田	33c Verville, Imperforate Plate Block, Never Hinged, Very Fine, 2001 PSE Certificate, Datz states that 50-100 pairs are known to exist, and these are presumably from either one or two panes making this plate block either unique or one of two known.	C113a	1,600
--------------	------	--	-------	--------------

10319	**	33c Verville, Imperforate Vertical Pair, Never Hinged, Very Fine, 1997 PF Certificate, Datz states that 50-100 pairs are known to exist.	C113a	850
--------------	----	--	-------	------------



10320	**	39c Sperry, Imperforate Pair, Never Hinged, Very Fine, 2001 PSE Certificate, Datz states that only 25 pairs have been reported to exist, and of these 25, only fourteen reportedly are sound.	C114a	1,750
--------------	----	---	-------	--------------



10321	**	44c Serra, Imperforate Vertical Pair, Never Hinged, Very Fine, 1999 PF Certificate, Datz states that only nineteen pairs have been reported and states these errors are "often encountered with disturbed gum or small faults".	C116a	1,500
--------------	----	---	-------	--------------

10322	** 田	45c Futuristic Mail Delivery, Light Blue Omitted, Never Hinged, Very Fine, photocopy of 1992 PF Certificate for pane of forty, this block corresponding to positions 23-4 & 31-2, Datz states that 60-80 blocks of four are known to exist.	C125b	750
--------------	------	---	-------	------------



10323	**	10c Special Delivery, Horizontal Pair, Imperforate Between, Never Hinged with left selvage, Fine-Very Fine, 1999 PF Certificate, Datz states that 80-100 pairs are known to exist.	E15c	550
--------------	----	--	------	------------



- | | | | | |
|--------------|-----------|---|------|--------------|
| 10324 | ** | 3c Postage Due, Vertical Strip of Three, One without "3 Cents", Never Hinged, top stamp "3 Cents" omitted, other stamps normal, Very Fine, 1997 PF Certificate, Datz states that 40-60 pairs are known to exist. | J91a | 675 |
| 10325 | ** | 3c Postage Due, Transition Vertical Strip of Three, One without "3 Cents", Never Hinged, bottom stamp black denomination completely missing, center stamp black denomination partially omitted & top stamp normal, Fine-Very Fine, 1994 Certificate, Datz states 40-60 pairs are known, including transition multiples like this one that sell for a premium. | J91a | 675 |
| 10326 | ** | 5c Postage Due, Vertical Pair, One without "5 Cents", Never Hinged, top stamp "5 Cents" omitted, bottom stamp normal, Very Fine with 1994 PSE Certificate for block, this being the right pair, Very Rare, only ten pairs reported by Datz. | J93a | 1,500 |



- | | | | | |
|--------------|-----------|--|------|------------|
| 10327 | ** | 6c Postage Due, Vertical Pair, One without "6 Cents", Never Hinged, bottom stamp "6 Cents" omitted, top stamp normal, Fine-Very Fine, 2005 PSE Certificate, Datz states that only twenty pairs are known to exist. | J94a | 850 |
| 10328 | ** | 8c Postage Due, Vertical Pair, One without "8 Cents", Never Hinged, bottom stamp "8 Cents" omitted, top stamp normal, Very Fine, 1998 PF Certificate, Rare, only twenty pairs reported to exist. | J96a | 850 |



10329	**	20c Official, Imperforate Pair, Never Hinged, Extremely Fine, 1995 PF Certificate, Datz states that fewer than 25 pairs have been reported to exist.	0135a	2,000
-------	----	--	-------	-------



10330	**	25c Official Coil, Imperforate Pair, Never Hinged, Fine-Very Fine, 1995 PF Certificate, Datz states 40-50 pairs reported to exist.	0141a	1,500
-------	----	--	-------	-------

10331	**	Balance of the Kass Error Collection, an impressive assembly of mostly Never Hinged major errors, including imperforate pairs, imperforate between pairs & color omitted errors listed in Scott & Datz, highlights incl. Nos. 966a, 1271a, 1363b, 1370b, 1381a, 1414b, 1470c, 1503a, 1508a, 1686g, 1690a, 1699a, 1787a, 1801a, 1823a, 1825a, 1926a, 1934a-b, 1940a, 2003a, 2024a, 2039a, 2096a-b, 2104a, 2145a, 2146a, 2349a, 2421a, 2511b, 2567c, C23a, and C82a, also incl. a Recalled Legends sheet, overall Very Fine (unless Fine is how the error comes), majority accompanied by 1980's-1990's PF Certificates, Scott Catalogue Value approaching \$35,000.	Est. 7,500 - 10,000
-------	----	--	---------------------

END OF SALE

THANK YOU