



# David Feldman SA Auction

Official sponsors of the F.I.P



## Earls Court, London - May 26-27, 2000

The Millennium Auction The Westminster Room

Direct line to auction: Tel. +44 (0)385-503 587 - Mobile: +41 (0)79-285 3086

## Auction Programme

			Cat. No.
<b>Friday, May 26</b>			
10.30h	Great Britain and British Commonwealth	10000-10483	1
	Great Britain - Hong Kong incl. Cyprus		
13.30h	India - Victoria, plus Collections incl. Mauritius and New South Wales	10484-10941	1
16.00h	Europe with Scandinavia, Montenegro, Serbia, France & Colonies, plus Collections	10942-11212	1
<b>Saturday, May 27</b>			
10.30h	Egypt incl. Three Award Winning collections	11213-11555	1
13.00h	All World with Americas and Far East, plus Collections	11556-11791	1
14.30h	The 'Primrose' Stamp Box Collection	20000-20517	2

### VAT (Sales Tax)

A special leaflet detailing the VAT regulations concerning this auction is enclosed.

## Viewing Arrangements

May 1-12 .....	GENEVA offices 175, route de Chancy by appointment
May 20-25 .....	EARLS COURT Westminster Room David Feldman Stand R30

### David Feldman SA

PHILATELISTS • AUCTIONEERS

175, route de Chancy • P.O.Box 81 • 1213 Onex, Geneva • Switzerland • Tel. +41 (0)22 727 07 77 • Fax +41 (0)22 727 07 78 • admin@davidfeldman.com



175, Route de Chancy  
P.O. Box 81  
1213 Onex, Geneva  
Switzerland.  
Tel. +41 (0)22 727 07 77  
Fax +41 (0)22 727 07 78  
admin@davidfeldman.com  
www.davidfeldman.com

# David Feldman

## The Millennium Auction London, Earls Court - May 26-27, 2000

### Catalogues

#### 1. Stamps and Postal History

- ◆ Cyprus (300+ Lots)
- ◆ Great Britain : The Artwork of Andrew Restall
- ◆ New South Wales : The 'Frankenstein' Collection (170+ Lots)
- ◆ Egypt (340+ Lots) Including award winning collections of :
  - 3rd and 4th Issue
  - Fuad
  - Commemoratives
- ◆ Mauritius Postal History (30+ Lots)
- ◆ Montenegro and Serbia (90+ Lots)
- ◆ Plus a wealth of better single items and major collections, including : Austria, Bolivia, British Commonwealth including British Guiana, India & States, Ionian Islands, Ireland etc. China, Finland, France, Korea, Lebanon, Norway, Portuguese Colonies-Timor; Saudi Arabia, Sweden, Thailand, Turkey etc. Plus two extensive All World Estates.

#### 2. The Primrose Collection of Stamp Boxes

- ◆ Including : Scales, inkwells, desk and writing materials.
- ◆ The 'Gerald Sattin' Collection of writing implements and accessories.

#### Postage

Each individual hardbound catalogue : SFr. 30 (US\$ 20 • GB£ 10 • DM 30)

World leading stamp auctioneers







10658



10666



10659



Ex 10660



10661



Ex 10662



10670



10671



10672



10673



10667



10663



10668



Ex 10669



10665



Ex 10677





Ex 10678



Ex 10679



10683



10689



10685



10687



10680



10684



10691



10686



10688



10690



10696



10692





10695



10700



10701



10702



10699



10707



10714



10719



10723



10698



10694



10703



10705

Lot	Photo	The Millennium Auction of Stamps & Postal History	Cat. N°	Est. GB£
10698	✉	117 1d Dull carmine on hard greyish wove, used in combination with laureated 1d on Sept. 1853 cover from Cooma to Sydney cancelled '39' some faults and soiling, a very rare franking	11	750
10699	⊙	117 1d Dull carmine on hard bluish, BLOCK OF FOUR, pos. 19-20, 24-25, very fresh and lightly cancelled '44' at Yass, just touched at left, extremely rare block, ex. Boucher and Wiggins	11	2'000
10700	(*)	117 1d Brownish red on hard greyish, pos. 12 unused, good margins all round, sl. thinning and a trifle soiled, rare, cert. RPS (1984) (SG £2'250)	12	500
10701	⊙	117 1d Carmine on laid paper, pos. 6, showing papermaker's watermark, fine, ex. Espana	13	240
10702	⊙	117 1d Carmine, thick laid paper, pos. 8 (hill unshaded) lightly cancelled with good to large margins, faint crease (SG £800)	13	240
10703	⊙	117 1d Reconstructed sheet of 25 incl. three pairs, with vars pos. 7 (no trees on hill), 8 (hill not shaded) and 15 (no clouds), margins mostly all round, a rare assembly		2'000
<b>1850 SYDNEY VIEWS - 2D PLATE I</b>				
10704	✉	119 2d Greyish blue, distinct earliest state of plate, pos. 13, with good to large margins tied on JANUARY 3rd 1850 folded cover to Parramatta, third day of use, reverse shows JAN 3 1850 arrival cds, second earliest NSW stamped cover, ex.Pack, Manwood, v.fine	15	750
10705	△	117 2d Deep grey blue, distinct earliest state of Plate (very clear impression), pos. 5, affixed by sealing wax to fgt with Sydney oval and GPO cds for JA.5.1850, fifth day of issue and a nice early example, rare thus	15	400
10706	△	2d Deep grey blue, early impression, pos. 8, on fgt tied '66' of Singleton to JA.28.1850 fgt, margins all round, sl. corner crease	15	200
10707	⊙	117 2d Greyish blue, early impression, pos. 15 with lower sheet margin, with a clear albino impression of the dotted grill of Sydney, overstruck by Sydney oval in black, very unusual	15	240
10708	△	119 2d Greyish blue, intermediate state, pos. 20, very fine on fgt, tied '39' of Cooma, with Sydney cds for FE.15.1850	16b	200



10709	✉	2d Dull blue, later state, two singles (pos. 21 +22) in combination with 3d vertical pair on double rate ship letter from Warwick (Queensland) to Scotland, with Sydney and Falmouth ship letter markings, file fold through lower 3d, a very rare franking	18	3'600
-------	---	---	----	-------



10708



10704



10711



10722



10718



10713



10712





- |   |     |     |   |       |              |
|---|-----|-----|---|-------|--------------|
| <b>10717</b>                            | △   |     | 2d Dull blue, late impression, bottom row retouched, a BLOCK OF EIGHT pos. 5-8 without retouch, pos. 17-20 with retouch (right pair with 'no whip' variety) used on OHMS fgt from Sydney with Windsor ds for NO.22.1850, second vertical pair damaged and the piece with some staining, extremely rare, the largest block surviving | 28    | <b>1'500</b> |
| <b>10718</b>                            | △ ⊙ | 119 | 2d Plate II, reconstructed sheet of 24 incl. all varieties, mostly with margins, pos. 8 used with Victoria '32' Butterfly of Portland, scarce assembly  |       | <b>1'000</b> |
| <b>1850 SYDNEY VIEWS - 2D PLATE III</b> |     |     |   |       |              |
| <b>10719</b>                            | (*) | 117 | 2d Dull ultramarine, pos. 3 unused, good to large margins, sl. staining, rare, cert. RPS (1928) (SG £2250)  | 29    | <b>700</b>   |
| <b>10720</b>                            | △   | 123 | 2d Dull ultramarine, pos. 23, with lower sheet margin on fgt tied '2' of Parramatta, Sydney ds for NO.26 1850, fine   | 29    | <b>150</b>   |
| <b>10721</b>                            | ⊙   | 123 | 2d Plate III, reconstructed sheet of 24 incl. varieties, mostly with margins all round, few stains, rare  | 29,30 | <b>1'200</b> |
| <b>1850 SYDNEY VIEWS - 2D PLATE IV</b>  |     |     |   |       |              |
| <b>10722</b>                            | △   | 119 | 2d Prussian blue on hard bluish wove, vertical pair pos. 12-24, lower stamp 'PENOE' variety, clear to large margins cancelled '1' at Ryde (rare) on fgt showing oval MID-DAY/MAIL and Sydney ds for MY.1.1851, sl. stains   | 32    | <b>200</b>   |
| <b>10723</b>                            | ⊙   | 117 | 2d Bright blue on hard bluish wove, pos. 17, variety 'no waves', with lower sheet margin, small gum soak, fine  | 33e   | <b>150</b>   |
| <b>10724</b>                            | (*) | 123 | 2d Dull ultramarine on laid paper, pos. 4 unused, horiz. crease and sl. soiling, rare (SG £2'750)   | 34    | <b>440</b>   |
| <b>10725</b>                            | ⊙   | 123 | 2d Dull ultramarine on stout laid paper, a block of three showing part of the Stacey Wise papermaker's watermark, pos. 5-6, 17-18 (17 with 'no waves'), cancelled '9' at Bathurst, good appearance, rebacked, rare  | 34    | <b>400</b>   |
| <b>10726</b>                            | ⊙   | 123 | 2d Dull ultramarine on stout laid paper, horizontal pair watermarked two crowns (part of T.H. Saunders wmk), good margins and cancelled '57' at Raymond Terrace, v. slight soiling  | 34    | <b>200</b>   |
| <b>10727</b>                            | ⊙   | 123 | 2d Dull blue, hard greyish wove, very rare BLOCK OF FOUR, pos. 11-12, 23-24, small scissor cut in margin only, smudged ovals, clear to enormous margins all round   | 37    | <b>2'600</b> |
| <b>10728</b>                            | ⊙   | 125 | 2d Blue, later state of plate, laid paper, reconstructed sheet of 24, fair to fine (SG 34, 35)  |       | <b>800</b>   |

Lot	Photo	The Millennium Auction of Stamps & Postal History	Cat. N°	Est. GB£	
10729	⊙	125	2d Blue, earlier state of plate, wove paper reconstructed sheet of 24, mostly with margins all round, few stain spots	31/33	900
<b>1850 SYDNEY VIEWS - 2D PLATE V</b>					
10730	✉	123	2d Dull ultramarine, hard greyish wove, pos. 13, fine and tied reversed '9' of Bathurst to AU.5.1851 cover to Sydney, minor staining away from stamp	36	200
10731	✉	125	2d Dull ultramarine, hard greyish wove, pos. 1 on OC.3.1851 env. from Parramatta to Raymond Terrace tied '2' oval, showing oval MID-DAY/MAIL in black, some staining, scarce	36	150
10732	(*)	123	2d Dull blue, hard greyish wove, pos. 20 unused with good margins and colour, sl. stain and minor wrinkle, rare (SG £2'500)	37	800
10733	⊙	123	2d Dull blue, hard greyish wove, a rare block of three, pos. 10-11, 22, good margins, slight soiling, ex. Burrus	37	500
10734	(*)	123	2d Dull ultramarine, stout laid paper, pos. 12 unused, small thin at foot and sl. mark on reverse, clear margins and a rare stamp unused (SG £3'750)	38	1'000



10735	⊙		2d Dull ultramarine, stout laid paper, BLOCK OF FOUR, POS. 9-10, 21-22, good to large margins and fine, very rare, ex. Ferrary, Boker	38	3'000
10736	⊙	123	2d Dull ultramarine, stout wove, pos. 7 but watermarked (part Stacey Wise wmk), neatly cancelled	38	120
10737	⊙	125	2d Reconstructed sheet of 24, two being on laid paper, incl. both varieties, mostly with margins all round, rare group	36/38	850
<b>1850 SYDNEY VIEWS - 3D GREEN</b>					
10738	E	125	3d Deep green plate proof on carton, note on reverse 'from ... P.O. Secretary', sl. stain	39	440



10739	(*)		3d Myrtle green UNUSED, pos. 8, the distinctive colour of the rare first printing, fine with clear to good margins, a great rarity of Australian States, this being the only unused example known, ex. 'España' collection, cert. RPS (1959)	40	10/12'000
-------	-----	--	--	----	-----------



10721



10724



10726



10732



10734



10736



10725



10727



10733



10720



10730



10749



10745



- 10740**    ☒    3d Yellow green on bluish wove, OUTSTANDING BLOCK OF FOUR ON COVER, pos. 16-17, 21-22, official wrapper from the Colonial Secretary in Sydney to the Comptroller General of Convicts in Tasmania, red Sydney ship letter cds and Launceston FREE on face, the block with good margins all round and fresh, marvellous exhibition piece, ex. Caspary and Amundsen, cert. RPS (1962)

42

**8/12'000**
- 10741**    ☒    125    3d Yellow green, hard greyish, pos. 13 and 14, two singles in combination with laureated 2d, all with good margins, cancelled '48' at Tarcutta on January 1853 cover to Albury (originally containing halves of 29 banknotes), sl. waterstaining, scarce quadruple rate combination

42

**1'800**
- 10742**    ☒    127    3d Yellow green, thick greyish, pos. 1 and 2 together on 1851 entire letter from Sydney to Adelaide (contents refer to yesterday's mails to South Australia mistakenly put by P.O. on board ship to California), margins all round, sl. stains and one with small corner crease, scarce double rate cover

42

**750**
- 10743**    △    127    3d Yellow green, hard greyish wove, BLOCK OF FOUR, pos. 1-2, 6-7, on fgt in combination with laureated 1d pair, all cancelled '95' at Brisbane (Queensland), 3d just touched at right and the fgt with some wrinkles, appealing mixed usage and a rare franking

42

**2'400**



- 10744**    ☉    3d Yellow-green on greyish, BLOCK OF SIX, pos. 6-7, 11-12, 16-17, margins almost complete, top pair with crease, sl. rubbing, a very rare block

42

**2'000**



10728



10729



10737



10731



10741



10743



10738



10750





10742



10746



10748



10751



10752



10753



10754



10756



10755



10757



10758



10759



10768



10760



10761



10762



<b>10763</b>	✉		81 WARWICK (Queensland): On 3d yellow green together with laureated 1d (2) on Jan. 1853 cover to Scotland, backstamped WARWICK cds and Sydney ship letter, 3d with margins all round, sl. stain, contents mention prospective goldfields, scarce	<b>1'000</b>
<b>10764</b>	◎	129	81 WARWICK (Queensland): On 1d Pl. II, pos. 16 (part sheet margin at left)	<b>200</b>
<b>10765</b>	◎	129	85 DRAYTON (Queensland): On 2d Pl. I, large margins, light crease	<b>120</b>
<b>10766</b>	◎	129	92 RICHMOND RIVER: Twice struck on vertical pair of 1d Pl. I (pos. 15+20), some stains and lower 1d with faults, scarce cancel	<b>240</b>
<b>10767</b>	△	129	93 BOYD: Clearly cancelling 2d Pl. I on fgt, extremely rare, this office (population under 20) was closed in July of 1850 with total postal revenue for Jan-July 1850 of 27 shillings and 2 pence	<b>500</b>
<b>10768</b>	✉	127	94 EDEN: On 2d Pl. II retouched, pos. 20, just tied to cover from the Royal Bank at East Boyd to Sydney, backstamped EDEN/SE.23.1850, clear to good margins, sl. soiling, the only recorded Sydney View cover from Eden (nearest P.O. to East Boyd, which had closed in July)	<b>500</b>
<b>10769</b>	◎	129	96 MARYBOROUGH (Queensland): Small oval on 1d Pl. I, large oval on 2d Pl. V (this type forged), good margins all round	<b>150</b>
<b>10770</b>	◎	129	(97) WALCHA: Oval datestamp (in place of '97' obliterator) in black on 2d Pl. V, pos. 21, stained on reverse, rare usage of a datestamp as cancellation	<b>200</b>
<b>10771</b>	◎	129	105 BENDEMEER: Light strike on 3d with good margins, extremely rare	<b>300</b>
<b>10772</b>	◎	129	108 NANANGO (Queensland): Slightly smudged on 2d Pl. IV, large margins, sl. stain	<b>150</b>
<b>10773</b>	◎		2 PARRAMATTA to 107 DUNDEE, the collection on exhibit pages, 95 Sydney Views plus 15 later stamps, including several rare or very rare, mostly clear strikes, exceptional assembly	<b>Offer</b>
<b>10774</b>	◎	129	RHOMBUS OF DOTS (attributed to Sydney): On 1d, 2d and 3d, two different types, good to large margins, scarce	<b>340</b>
<b>10775</b>	◎	129	VICTORIA: 3d Pale emerald pos. 21 with neat oval 1/V of Melbourne, ex. Burrus	<b>200</b>
<b>1851-53 LAUREATED, UNWATERMARKED, 1D</b>				
<b>10776</b>	△	129	1d Carmine, thick yellowish paper, strip of three used on fgt (hinged back) with 1852 ship letter ds in red, just touched at top left, scarce	44 <b>200</b>
<b>10777</b>	◎	129	1d Reconstructed sheet of 50, incl. 15 pairs and a strip of 3, showing all varieties, margins vary, fair to fine, a rare reconstruction	45/48 <b>800</b>
<b>10778</b>	*	131	1d Vermillion, very fresh mint with good margins, thin on reverse, otherwise very fine	47 <b>240</b>



10764



10765



10767



10770



10771



10772



10769



10774



10775



10766



10776



10779



10777



10794



10799



10797



10795





10781



10778



10791



10804



10815



10820



Ex 10783



Ex 10784





10788



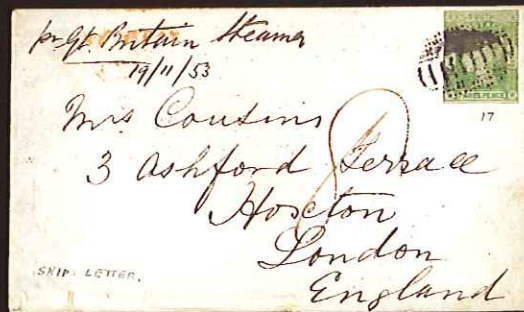
10789



10782



Ex 10822



10786



Ex 10801



10802









10787



10780



Ex 10824



10829



10831



10793





10798



10806



Ex 10811



10817



10837



Ex 10818



10813



10827



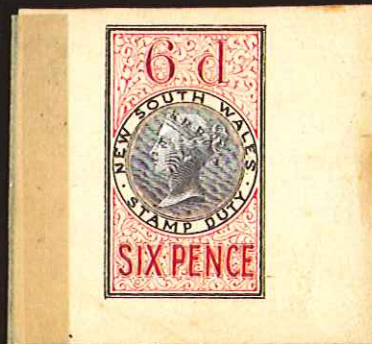
10828



10832



Ex 10834



Ex 10839



Ex 10835



10838



10850



10851





10840



10841



10857



10853



10866



10864



10858



10867



10868



10870



10871



10873



10874



10875



10888



10877



10878



10884



10887



10886

## EXPLANATIONS OF SIGNS AND ABBREVIATIONS

**	=	mint unmounted/never hinged
*	=	mint with original gum, lh
(*)	=	mint without gum or regummed
⊙	=	used or cancelled
Δ	=	on piece/fragment
☐	=	cover, entire, envelope, postcard
(☐)	=	cover front
→	=	airmail
E	=	essay/proof/die proof
F	=	forgery
±	=	approximate count
43/64	=	between 43 and 64
43-64	=	from 43 to 64 inclusive
addl	=	additional
approx	=	approximative
B	=	bottom
bklit	=	booklet
BL	=	bottom left
blk	=	block
BR	=	bottom right
bs	=	backstamp(ed)
canc	=	cancel
cat	=	catalogue
cds	=	circular date stamp
cert/attest	=	certificate of genuineness
cpl	=	complete
cto	=	cancelled to order
defins	=	definitives
diff	=	different
diag	=	diagonal
dist	=	disturbed
dupl	=	duplicate
env	=	envelope
fac	=	forwarding agent
FDC	=	first day cover
f.flt	=	first flight
fkz	=	franking
horiz	=	horizontal
hr	=	hinge remnant
hs	=	handstamp
imperf	=	imperfected
incl	=	including
L	=	left
lh	=	lightly hinged
mc	=	maltese cross (cancel)
mgn	=	margin
min.sheet	=	miniature sheet
mkg	=	marking
ms	=	manuscript
mult	=	multiple
nh	=	never hinged
ovpt	=	overprint(ed)
o/w	=	otherwise
pc	=	postcard
perf	=	perforated
pl	=	plate
pmk	=	postmark(ed)
pos	=	position
post-stat	=	postal stationery
ppc	=	picture postcard
ptg	=	printing
R	=	right
reg	=	registered
selv	=	selvedge
s/l	=	straight line
STC	=	stated to catalogue by third party
surch	=	surcharge
T	=	top
TL	=	top left
TR	=	top right
unwmk	=	unwatermarked
var	=	variety
vert	=	vertical
wmk	=	watermark(ed)
w/o	=	without
&	=	and
32,36,45	=	3 individual stamps
32+36+45	=	3 stamps on a cover or card

### Quality range

superb	=	perfect in every respect
very fine	=	very well preserved
fine	=	well preserved or perfect for modern stamps

## ERKLÄRUNGEN DER ZEICHEN UND ABKÜRZUNGEN

postfrisch ohne Falz
ungebraucht mit Original-Gummi
ungebraucht ohne Gummi oder nachgummiert
gebraucht oder gestempelt
Briefstück
Brief, Umschlag, Karte, Zeitung
Briefvorderseite
Flugpost
Probdruck
Fälschung
annähernde Rechnung
zwischen 43 und 64
ab 43 bis 64 inklusiv
zusätzlich
annähernd
unten
Heftchen
unten links
Block
unten rechts
rücks. Entwert.
entwerten
Katalog
Rundstempel
Prüfungssattest
komplett
Gefälligkeitsstempel
Freimarken
verschieden
diagonal
verändert
Doppel
Brief
Spediteurstempel
Ersttagsbrief
Erstflug
Frankatur
horizontal
Falzrest
Handstempel
ungezähnt
einschliesslich
links
leichter Falz
Malteser Kreuz
Rand
Kleinbogen
Vermerk
handschriftlich
mehrfach
postfrisch ohne Falz
Aufdruck
andernfalls
Postkarte
gezähnt
Platte
Poststempel
Position
Ganzsache
Ansichtskarte
Druck
rechts
eingeschrieben
Bogenrand
linear
nach Angabe des Einlieferers
Aufdruck
oben
oben links
oben rechts
ohne Wasserzeichen
Abart
senkrecht
Wasserzeichen
ohne
und
3 Einzelwerte
3 Werte zusammen auf Karte/Brief

### Qualitätseinteilung

Luxusstück
Kabinettstück
Prachtstück oder einwandfrei für moderne Marken

## EXPLICATION DES DIFFERENTS SIGNES ET ABBREVIATIONS

neuf sans charnière
neuf avec gomme d'origine
neuf sans gomme ou regommé
oblitéré
fragment
enveloppe, lettre, carte postale, etc.
devant de lettre
poste aérienne
essai
faux
calcul approximatif
entre 43 et 64
de 43 à 64 inclus
additionnel
approximatif
en bas
carnet
en bas à gauche
feuillelet
en bas à droite
cachet au verso
oblitéré
catalogue
cachet circulaire à date
certificat d'authenticité
complet
oblitéré par complaisance
émissions générales
différent
diagonal
altéré
double
lettre
agent
enveloppe premier jour
premier vol
affranchissement
horizontal
trace de charnière
cachet à la main
non dentelé
inclusif
à gauche
légère charnière
croix de Malte
marge
feuillelet
marque
manuscrit
multiple
neuf sans charnière
surcharge
sinon
carte postale
dentelé
planche
oblitération
position
entier postal
carte postale illustrée
impression
à droite
recommandé
bord de feuille
linéaire
selon indication du vendeur
surcharge
en haut
en haut à gauche
en haut à droite
sans filigrane
variété
vertical
filigrane
sans
et
3 valeurs séparées
3 valeurs ensemble sur pli ou carte

### Degré de qualité

superbe
très beau
beau

Lot	Result	Lot	Result	Lot	Result	Lot	Result	Lot	Result	Lot	Result
10463	220	10537	480	10607	1700	10687	220	10776	150	10849	550
10464	380	10538	600	10608	1700	10688	900	10777	500	10850	320
10465	160	10539	360	10609	4200	10689	600	10778	190	10851	800
10467	50	10540	550	10610	2600	10690	1600	10779	140	10852	1100
10468	1000	10541	400	10611	15000	10691	420	10782	100	10853	650
10470	120	10542	280	10612	4800	10692	150	10783	700	10854	280
10471	50	10543	320	10614	4800	10693	2000	10784	500	10855	60
10472	100	10546	500	10615	1200	10695	750	10785	17000	10856	80
10475	160	10545	440	10616	2800	10696	180	10786	100	10857	550
10478	320	10544	460	10617	1200	10697	2000	10792	1300	10858	200
10479	18000	10547	220	10619	1100	10698	700	10794	1600	10860	50
10480	500	10548	440	10620	1800	10699	1600	10795	200	10861	200
10481	120	10549	1900	10621	1100	10700	700	10796	150	10862	70
10482	220	10550	1200	10623	4200	10702	220	10797	280	10863	1100
10483	320	10551	170	10624	320	10701	220	10798	850	10864	700
10484	140	10552	380	10626	2200	10703	1200	10799	420	10865	55
10486	75	10553	1000	10627	7000	10704	950	10800	700	10866	700
10488	1400	10554	1400	10628	9000	10705	360	10801	400	10867	650
10487	1300	10555	1500	10629	2800	10706	160	10802	1100	10868	850
10489	220	10556	5500	10632	2800	10707	200	10803	260	10869	340
10490	110	10557	850	10634	2800	10708	320	10804	280	10870	200
10491	1000	10559	13000	10635	500	10709	2400	10805	850	10871	160
10492	300	10560	1900	10637	4800	10710	2800	10806	1300	10872	220
10493	260	10561	750	10638	1100	10711	2000	10807	550	10873	400
10494	140	10563	3800	10639	2000	10712	800	10808	900	10874	650
10495	60	10564	1900	10640	750	10713	850	10809	260	10875	380
10496	380	10565	240	10641	550	10714	300	10810	400	10877	320
10497	1700	10566	600	10643	1000	10715	8000	10811	160	10878	550
10499	140	10567	20	10642	1100	10716	1350	10812	4200	10879	650
10500	1000	10568	14000	10644	700	10717	1250	10813	650	10880	500
10501	750	10569	200	10645	850	10718	600	10815	220	10881	420
10502	260	10573	240	10649	460	10719	500	10817	950	10882	1400
10503	160	10575	80	10648	460	10720	140	10818	1000	10883	110
10504	190	10574	70	10653	1500	10721	950	10819	1600	10884	90
10506	5500	10576	600	10654	170	10722	220	10820	1500	10885	130
10507	80	10577	400	10655	140	10723	100	10821	600	10886	280
10508	11000	10578	400	10656	260	10724	480	10822	650	10887	130
10509	4000	10579	320	10659	1700	10725	360	10823	750	10888	110
10510	110	10580	280	10661	700	10726	240	10824	600	10889	500
10514	420	10581	95	10660	700	10727	2000	10825	240	10890	4600
10513	380	10582	550	10662	280	10728	500	10826	650	10891	2600
10512	420	10583	70	10663	200	10730	240	10827	340	10892	600
10511	420	10584	160	10664	2400	10732	1000	10828	280	10893	120
10515	3800	10585	3000	10665	600	10734	800	10829	600	10894	280
10517	550	10586	440	10666	120	10735	2200	10830	1200	10895	70
10516	800	10587	40	10667	1800	10736	110	10831	1200	10896	550
10519	280	10588	60	10668	75	10737	750	10832	420	10897	400
10518	380	10589	500	10669	320	10738	380	10833	440	10898	260
10523	550	10590	1100	10670	800	10739	7000	10834	650	10899	400
10522	750	10591	140	10671	900	10740	26000	10835	1500	10900	130
10521	550	10592	50	10672	550	10741	1600	10836	2200	10901	50
10520	550	10593	850	10674	1600	10744	1700	10837	950	10902	60
10524	480	10595	600	10675	600	10745	500	10838	650	10903	90
10525	460	10596	380	10677	4200	10746	200	10839	2200	10904	180
10527	110	10597	240	10676	1800	10747	4000	10840	750	10905	220
10529	120	10598	1100	10678	300	10748	1300	10841	550	10906	50
10530	950	10599	30	10679	550	10749	110	10842	1900	10907	600
10531	360	10600	500	10680	200	10750	130	10843	2600	10908	480
10532	6000	10601	4200	10681	1000	10763	900	10844	150	10909	30
10533	1000	10602	750	10682	750	10768	400	10845	3400	10912	170
10534	20000	10604	1000	10684	300	10771	150	10846	600	10914	650
10535	1000	10605	1800	10685	200	10774	420	10847	1100	10916	130
10536	440	10606	2600	10686	1300	10775	100	10848	280	10917	120

LOTS NOT INCLUDED IN THIS LIST WERE EITHER WITHDRAWN OR DID NOT BRING A BID  
Prices do not include 18% buyers' premium