

The Collection (V)



Greece

The Large Hermes Heads

Feldman Galleries, Geneva
May 22, 2005

David Feldman SA, Auction

Under the ministry of Me. René Pantet

Greece

The Collection (V)

A **dual-city** auction conducted in Geneva with simultaneous bidding through Internet from Athens

Geneva

Feldman Galleries

175, route de Chancy / 202, route du Grand-Lancy, 1213 Onex, Geneva, Switzerland

Tel: +41 (0)22 727 07 77, Fax: +41 (0)22 727 07 78,
admin@davidfeldman.com, www.davidfeldman.com

Viewing

From May 2 by appointment: For reservations contact: Lydia Stocker, Tel.: +41 (0) 22 727 07 77
(weekend and late evening viewing by appointment)
From May 21, general viewing: 09h00-19h00 daily

Auction

Sunday May 22, 2005 : 18h00 CET

Athens

Hellenic Philotelic Society

Akademias 57, 10679 Athens, Greece

Tel. & Fax: +30 210 3621125, Email: hps@hps.gr

For information contact: Costas Chazapis:

Tel.: +30 210 981 3127, Fax: +30 210 983 4489, Email: pasadena@california.gr

Viewing

Wednesday May 18, 2005: 15h00-21h00

Auction

Sunday May 22, 2005 : 19h00 (Athens Time)



David

world leading

Greece: Large Hermes Head The Collection Part (V)

Over 234 lots including collections and mixed lots

Special Viewing in Athens at:

Hellenic Philatelic Society
Akademias 57, GR-10679 Athens
tel & fax: +30 210 3621125, e-mail: hps@hps.gr

**May 18, 2005
15:00 - 20:00**

Auction in Geneva at Feldman Galleries
Sunday, May 22, 2005.
or participate in Athens by
Live Internet connection at:
Hellenic Philatelic Society
Akademias 57, GR-10679 Athens

**For further information please contact:
Costas Chazapis**

tel: +30 210 9813127 (week days 09:00-17:00)
fax: +30 210 9834489,
e-mail: pasadena@california.gr



Feldman

stamp auctioneers

next auction series

Feldman Galleries, Geneva

May 21-25, 2005

Catalogue 1 - The Collection of Large Hermes Heads(Part V)

Catalogue 2 - Maritime & Mexico

Catalogue 3 - All World & Collections

Catalogue 4 - The "Shaida" collection of illustrated envelopes

Catalogue 6 - Rarities of The World

Catalogues on request

Consign now for November 2005 auction

November, 2005

- ♦ **Greece** The Collection of Large Hermes Heads (Part VI)
- ♦ **Overseas & Europe**
- ♦ **Egypt**
- ♦ Collections, Estates, Successions etc.

Deadline for consignments August 31st, 2005



David Feldman SA ♦ 175, route de Chancy ♦ P.O. Box 81 ♦ 1213 Onex, Geneva ♦ Switzerland
Tel: +41 (0)22 727 07 77 ♦ Fax: +41 (0)22 727 07 78 ♦ admin@davidfeldman.com ♦ www.davidfeldman.com

Large Hermes Heads

The first Greek stamps appeared in October 1861 and were designed based on original essays and trials by A. Barre, son of J.J. Barre who had designed the first French stamps in 1849. He took as a base the existing French first issue which portrayed Ceres in a circle and rectangular frame, and replacing the centre portrait with that of the famous Greek God HERMES.

The printing plates were made by Albert Barre himself. After the first printing in Paris in 1861, they were transferred to Athens where they were used for the printing of all the Athens issues until 1886. That first issue was produced in a beautiful series of single colours for different face values of the stamp; 1 lepton brown, 2 lepta bistre, 5 lepta green, 10 lepta orange, 20 lepta blue, 40 lepta mauve, 80 lepta carmine, all those colours coming over the period in a variety of fine shades and nuances. Very soon the stamps were selling out and there was an urgent need for replacement, especially for the 20 lepta which covered the popular domestic letter rate. A "copy" style of the Paris printing was hurriedly produced in Athens which is called the "provisional printing".

The first regular Athens printing was a complete set of those "Large Hermes" portraits with the value figures now at the back. These stamps were also soon sold out and other values needed and so on over the next 20 years or so which was a period encompassing the issue of many different kinds of printings of the Large Hermes series.

The Large Hermes stamps proved also very popular and fascinating with international collectors. They were elegant and also existed in many forms; blocks, multiples, even sheets and of course a great use of them on the extensive correspondence written from Greece and curiously also to Greece. Why to Greece? Greece had signed postal agreements with most of the foreign postal services that were active in the East Mediterranean long before the issue of stamps or just during the first years of the stamp period, so postage due was paid only for unpaid or partly-paid letters. Accordingly "postage due" was raised and this was paid by affixing the regular Large Hermes stamps on covers and letters on arrival until 1875 when the special postage due adhesives were issued. All of this gave an enormous wealth of colourful frankings and mixed issue frankings with many other countries. (Fig. VI)

Why Hermes ?

Hermes (Fig. II, V), son of Zeus and Maia, presided over commerce and "athletics" and everything in short which required skill and dexterity. He was a messenger of Zeus and so wore a winged cap and winged shoes. He was the Divine Herald.

What better a choice for the personification of postage stamps, that little emblem which would be Greece's ambassador and deliverer of communications all over the world.



(Fig. II)



(Fig. III)



(Fig. IV)



(Fig. V)



(Fig. I)

THE MICHAEL TSERIOTIS CLASSIFICATION OF THE LARGE HERMES HEADS OF GREECE

My 37 years long occupation with these fascinating issues has led me to the conclusion that the various classifications appearing in catalogues and other philatelic publications perpetuate some old doctrines that nowadays can no more been acceptable. All the different classifications that I have studied over the years are also either incomplete or contain serious mistakes, or both.

The listing presented in this publication is an attentive endeavour to construct a classification that strictly complies to the rule that any criterion used in the attempt to classify these issues should only adhere to objective evidence and not to intangible and obscure theory.

The first publication about this classification dates back to 1991 at the Berne symposium on the Large Hermes Heads and since then I have become satisfied that my ideas regarding any alterations in the conventional classification coincide with the ideas of most of my fellow students of these issues.

This classification has been adopted by the "HELLAS" stamp catalogue issued by the A.Karamitsos company.

Michael Tseriotis A.I.E.P

THE LARGE HERMES HEADS

The designer of the stamps and engraver of the plates was Albert Barre, son of J.J. Barre, the designer of the first French stamps. A. Barre used the basic concept of his father's design but substituted Hermes for Ceres in the central medallion. The result produced probably the most beautiful stamp design of the 19th century.

The stamps were printed at the works of Ernest Meyer in Paris and put into circulation on October 1st, 1861.

After the Paris printing the plates were transferred to Athens where they were uninterruptedly used for a quarter of a century to produce an amazing series of distinctive printings.

Control figures errors:

Each individual type of error is always designated by a specific letter (preceded by "N") as shown below:

- Na. The first digit is inverted
- Nb. The second digit is inverted
- Nc. Both digits are inverted
- Nd. Mutual transposition of both digits to each other's place
- Ne. Wrong control figure
- Nf. Wrong control figure corrected later
- Ng. Only the first digit is printed
- Nh. Only the second digit is printed
- Ni. Partial impression of the first digit
- Nj. Partial impression of the second digit
- Nk. The two digits are widely spaced apart
- Nl. "0" in the shape of a "keyhole"
- Nm. Inverted control figure
- Nn. Control figure printed on the front
- No. Double control figure
- Np. Control figure missing

This classification does NOT include:

Essays and proofs, bisected stamps, plate flaws, light double printings and other minor varieties of the picture, stamps printed on folded paper, the various shades of the control figures, combinations of two or more errors and varieties of them. In some remarkable cases of all these, special mention is made in the appropriate chapter.

Recommended reference literature:

Hellenic P.S.: "Etude sur les timbres de Grèce", Nicholas Asimakopulos:
"The plate flaws of the Large Hermes Heads of Greece, 1861-1885",
John Countouros: "The control numbers and the classification of the stamps of the Large Hermes Heads"

Excellent impression which is easily distinguished from all Athenian prints.
The 10 Lepta value has at the back control figures 8mm high.

1. 1l.
a. Brown to chocolate-brown
b. Reddish-brown to *reddish-chocolate
c. Chocolate to deep chocolate

* very rare

2. 2l.
a. Bistre
b. Olive-bistre
bPa. Olive-bistre on thin paper
c. Brown-bistre
cPa. Brown-bistre on thin paper
cPb. Brown-bistre on thick paper

3. 5l.
a. Yellow-green
b. Green

4. 10l.
a. Yellowish-orange on blue
b. Orange on blue

- Na. "1" inverted
Nb. "0" inverted
Nm. Inverted control figures

Note: There are examples with "1" of the control figure broken at top.

5. 20l.
a. Blue
aPa. Blue on thin to very thin transparent paper
b. Prussian blue
c. Deep blue
cPa. Deep blue on thin to very thin transparent paper
d. Dark deep blue

Note: No. 5d was used in Patras

6. 40l.
a. Mauve on blue
b. Dull mauve on blue

7. 80l.
a. Rose-carmine
b. Carmine

Stamps without gum (final proofs)

- | | | |
|-----|------|--------------------------------------|
| 1A | 1l. | Brown |
| 2A | 2l. | Bistre |
| 3A | 5l. | Green |
| 4A | 10l. | Orange |
| 4Ba | 10l. | Without control figures (orange) |
| 4Bb | 10l. | Without control figures (red orange) |
| 5A | 20l. | Blue |
| 6A | 40l. | Mauve on blue |
| 7A | 80l. | Rose carmine |

Note: The distinction between these final proofs and the issued stamps from which the gum has been removed is practically impossible.



10000 E

ORIGINAL DIE PROOF in blue on small sheet of laid batonné paper, the Head & spandrels being complete but without Greek Border, corner ornaments, lettering & value, an extremely rare proof, ex. Alphonse, cert. Holcombe

7'000



10001 E

ORIGINAL DIE PROOF in blue complete except for value tablets, stuck on carton paper, some marginal foxing, otherwise very fine and extremely rare, signed Holcombe, cert. Tseriotis

4'000

10002 E

ORIGINAL DIE PROOF in black complete except for value tablets, insignificant thinning & ironed-out creases, an important exhibition item, v.fine for this and extremely rare, cert. Tseriotis

5'000



- 10003** E 1 Lep whitish-black to dark chocolate, an attractive array of eight different shades, also one 2L proof, mostly fine to v. fine, ex. Maximus **500**



- 10004** E 1 Lep brown proof, unused, fine **50**
- 10005** E 田 1 Lep light chocolate block of four, tiny scissor cut at the margin well away of the design, v. fine, ex. Maximus **240**
- 10006** E 5 Lep green pair, v. fine **80**



- 10007** E 10 Lep orange on blue without figures at the back, large even margins, superb **400**



- 10008** E 田 10 Lep orange, without figures at back, block of four, superb and rare,
Ex. Maximus (1985 realised SFr.13'800), cert. Tseriotis

5'000



- 10009** E 20 Lep blue, a selection of six proofs showing different stages of trial
printings with examples showing double printing or printed on both sides

180



- 10010** E 40 Lep black corner pair, superb, ex. Maximus

180

- 10011** E 40 Lep mauve, three examples in different shades, one with small thin,
otherwise superb - one marginal

120

- 10012** E 80 Lep carmine, three examples in different states

100



THE "IMPRIMATURES" (SO-CALLED "BARRE PROOFS")



- 10013** E 田 2 Lep olive-bistre and bistre (marginal), two blocks of four in the issued shades, both v. fine

2A

150

- 10014** E 田 5 Lep green block of four, toning spot on one, extremely fine impression, signed Holcombe

3A

500

- 10015** E 10 Lep yellow-orange marginal example, superb

4A

150

- 10016** E 10 Lep orange without control figures, v. fine

4Ba

400



10017 E 田

40 Lep dull mauve block of four, v.fine

6A 400



10018 E

80 Lep carmine, marginal block of four with part of PRINTER'S INSCRIPTION, v.fine and extremely rare showpiece, the only block with this inscription known to us, cert. Holcombe, Tseriotis

7A 4'000



10019 ☉ 1 Lep chocolate-brown used, clear to good margins, v.fine 1a **400**

10020 ☉ 1 Lep brown used pair with clear "26" lozenge, good to large margins, v. fine 1a **400**



10021 ☉ 1 Lep chocolate-brown used, clear to good margins, marginal example, ironed - out crease and some thinning but still of excellent appearance 1a **150**

10022 ☉ 1 Lep brown used, just touched at lower right frame line to huge margins, marginal thin, fine 1a **100**



10023 ☉ 田 1 Lep chocolate-brown, BLOCK OF TEN used with diamond of dots "67" cancellation of Syros, good to large margins all round, natural paper spot in second top stamp and ironed-out creases between rows. 1a **20'000**

A very fine and important showpiece of great magnitude, the second largest known block, cert. Holcombe, Tseriotis



10024



1 Lep brown, vertical strip of five used together with Paris issue 5 Lep, 10 Lep, 40 Lep and 80 Lep on 1861 (29 Nov.) entire from Syros to Cyprus, red "P.E.D" hs alongside indicating full payment to destination, two stamps of the strip and 10 Lep affected by filing fold, 40 Lep and 80 Lep touched, letter is either overpaid or some stamps are missing as the correct rate would have been either 110 lepta or 160 lepta

1a+3a+4b+6a+7b

14'000

Rate: 110 Lepta is two and a half times Lloyd rate of 60 Lepta, plus 20 Lepta Greek domestic rate, applicable between 7 1/2 and 15grs or 160 Lepta double Lloyd, plus double Greek domestic rate of 40 lepta, applicable 15 and 22 1/2grs.



10025



1 Lep copper-brown mint, good to large margins, v. fine & an unusual shade

1c

260



10026



1 Lep chocolate-brown, used strip of five, just touched on one corner to good even margins, v. fine and rare

1c

3'000



10027 (*)

2 Lep bistre unused strip of four, probably cut from the imprimature sheet, superb

2a

80



10028 ☒

2 Lep bistre, strips of seven and three, both with margins all round (three stamps affected by filing folds), used together on 1865 folded lettersheet from Nafpaktos (22 Oct.) to Patras. A very fine cover of the highest rarity and a showpiece for a great collection, ex. Binos, cert. Tseriotis

2a

8'000



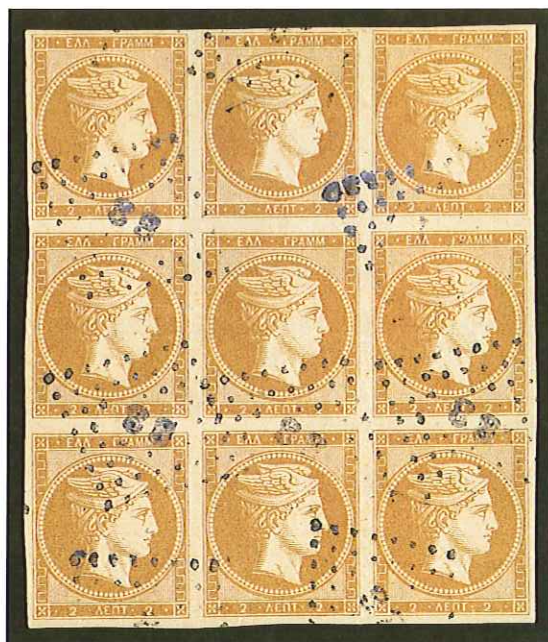
10029



2 Lep olive-bistre used strip of 3 cancelled by cds of Tripolis dated 1886 (very late use), v. fine and rare

2b

260



10030



2 Lep olive-bistre used block of nine, good to large margins, cancelled with "83" (Skyros) in blue, insignificant crease, superb & very rare, sold "as is"

2b

1'500



10031



5 Lep yellow-green used strip of four, good even margins, light creasing on one, otherwise fine

3a

800



- | | | | | |
|--------------|----|---|----|--------------|
| 10032 | ⊙ | 5 Lep yellow-green used vertical strip of three, good to large margins all round, traces of ink from the cover, fine & scarce | 3a | 400 |
| 10033 | ** | 5 Lep green mint with virtually full gum, large even margins, tiny red mark mentioned for accuracy, superb appearance | 3b | 400 |
| 10034 | * | 5 Lep green mint, v.fine and rare, cert. Tseriotis | 3b | 1'200 |



- | | | | | |
|--------------|---|--|-------------|--------------|
| 10035 | ✉ | 5 Lep green used together with Paris print 10 Lep, 20 Lep and 40 Lep on cover from Patras (15 Feb. 1862) to Trieste, v. fine and scarce | 3b+4b+5a+6b | 700 |
| | | Rate: 75 Lepta, being 20 lepta Greek domestic rate, plus 45 lepta Lloyd and 10 lepta (3 Kr.) Triest local | | |
| 10036 | ✉ | 10 Lep yellowish orange on blue + 40 Lep marginal, both with large to very large margins, used as dues on 1861 cover from Constantinople to Syros, v.fine and rare | 4a+6 | 1'600 |



10037



10 Lep yellowish orange on blue, good to large margins used together with Paris Print 40 Lep on 1861 (3 Nov.) folded cover from Constantinople to Athens, with large Constantinople cds alongside, fine and a scarce usage, ex. Binos

4a+6

500

Rate: 50 Lepta being 30 lepta ship transport and 20 lepta Greek domestic rate



10038



10 Lep orange on blue STRIP OF FIVE, one touched to good to large margins on all the others, neatly cancelled by lozenge "95" on 1861 folded cover Constantinople (8 Dec.) to Piraeus, stamps lifted for examination and placed back, slightly out of place, cover faults, a stunning multiple franking & the largest known on cover, an important rarity, ex. Maximus, cert. Tseriotis

4b

7'000

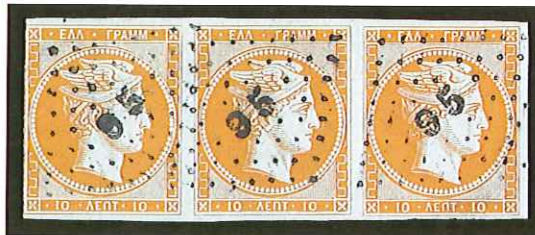
Rate: 50 Lepta being 30 lepta ship transport and 20 lepta Greek domestic rate



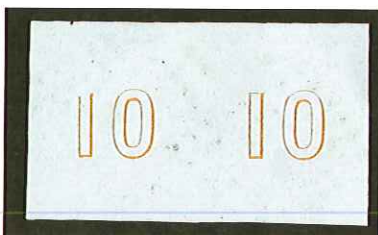
- 10039** ☒ 10 Lep orange on blue pair (fine) tied on 1861 cover from Piraeus to Syra where a 20 Lep was added to pay for postage due, boxed "PLIROMI ANEPARIKRKIS" (insufficient payment) is adjacent, very fine and extremely rare showpiece

4b **1'600**

- 10040** △ 10 Lep orange on blue, large to huge margins, a magnificent pair used on large part cover, lifted & replaced back, a superb pair, ex. Binos

4b **360**

- 10041** ◎ 10 Lep orange on blue used strip of three, frameline touched at left to good even margins, slight hinge thin on one, fine appearance and rare

4b **1'800**

- 10042** ◎ 10 Lep orange on blue used pair, large even margins, position 14 showing "1" broken on top, v. fine and extremely rare control number variety in a pair in this superb state

4b **1'200**

- 10043** ◎ 10 Lep orange on blue used pair, clear to large margins, v. fine and scarce

4b **400**



10044

10 Lep orange on blue + 40 Lep + 20 Lep + 5 Lep, all with clear to large margins, tied "31" lozenge and used as dues on 1861 (14th Oct.) cover to Calamata, an attractive 4-colour franking v. fine

4b+3+5+6

1'200

Rate: 75 Lepta, being 20 lepta Greek domestic rate, plus 45 lepta Lloyd and 10 lepta (3 Kr.) Triest local



10045 *

20 Lep blue mint with large part gum, good to large margins, v. fine, signed Holcombe

5a

400



10046 *

20 Lep blue mint marginal example, tiny thinning at a point, v. fine for this and rare

5a

180



10047

20 Lep prussian blue, good to large margins, neatly tied "67" lozenge on folded cover from Syros to Gytheion with SYROS/3.OKT.61 cds alongside, the third day of use, the stamp is pos. 17 with plate flaw "dot on the meander at lower left", v. fine and extremely rare on cover, especially of such an early date, ex. Lascaris

5b

500


10048 *

40 Lep mauve on blue mint pair, large margins, excellent colour & impression, v. fine

6a

500

10049 ** 田

THE FAMOUS DORNING-BECKTON BLOCK

6a

15'000

40 Lep mauve on blue mint BLOCK OF EIGHT, positions 67-70/77-80 showing position 67 with the "Hook" variety, clear to huge margins, exceptional gum & freshness of colours, usual gum creases, superb appearance & a unique block with the "Hook" variety, cert. Holcombe & Tseriotis

The largest known multiple and a great exhibition showpiece, one of the gems of the Paris issue

Provenance: ex. Dorning-Beckton, Burrus, Gill



- 10050** 40 Lep mauve together with 20 Lep blue, 10 Lep orange & 5 Lep green tied by CALAMATA cds on unpaid folded cover from Trieste via Athens to Calamata, 40 Lep slightly touched at TR, v. fine & attractive 4-colour franking, cert. Holcombe 6a+ **1'000**

Rate: 75 Lepta, being 20 lepta Greek domestic rate, plus 45 lepta Lloyd and 10 lepta (3 Kr.) Triest local

- 10051** 40 Lep dull mauve on blue, good margins, used in combination with Paris 5 Lep + 6b+3+12l+13l First Athens 10 Lep (creased) + 20 Lep all tied lozenge "31" & used on 1862 cover from Triest to Kalamae, the 40Lep shows plate flaw "hook on the meander at lower right", v. fine and most desirable four colour franking **1'200**

Rate: 75 Lepta, being 20 lepta Greek domestic rate, plus 45 lepta Lloyd and 10 lepta (3 Kr.) Triest local



- 10052** 40 Lep dull mauve on blue, good to large margins, in combination with 5 Lep + 6b+3b+12lla+13lb First Athens 10 Lep + 20 Lep all tied on 1862 cover from Triest to Kalamai, 5 Lep affected file fold, a fine & colourful franking, cert. Tseriotis **1'000**

Rate: 75 Lepta, being 20 lepta Greek domestic rate, plus 45 lepta Lloyd and 10 lepta (3 Kr.) Triest local



10053 * * * 田

80 Lep carmine mint block of four, good to large margins, hinge remainders, v.fine and rare, ex. Maximus

7b

600



10054 ☒

80 Lep carmine, five singles, some faults, used in combination with Paris Print 7b+2b+12lb+13lla 2 Lep and First Athens 10 Lep and 20 Lep on 1862 folded entire from Marseille, carried by the "Neva" with cds alongside, to Athens. An attractive and exceedingly rare four colour franking, ex. Binos, cert. Tseriotis

4'000

Rate: 352 Lepta, being three and a half times the basic French rate of 112 lepta and double Greek rate, applicable between 25-30grs.

FIRST ATHENS ISSUES (October 1861 - April 1862)

These prints are traditionally called "Provisional Athens Prints". In fact, this "provisional" character can be attributed only to the 20l. value without control figures, which was produced from the first trial stamp printings made in Athens.

The initial printings are very coarse but they improved, as the printers became presumably familiar with the procedure, to become very fine at the end. It must be strongly stressed that some shades exist only as coarse or fine printings, whereas in the case of other shades coarse and fine types coexist on the same sheets side by side.

"Provisional" issue the 20 lepta without control figures

These printings constitute the first trials by the Greek printers to test the method of printing the stamps. This conclusion is drawn from the fact that there is variety of different shades and papers amongst the very limited number of known specimens (about 150).

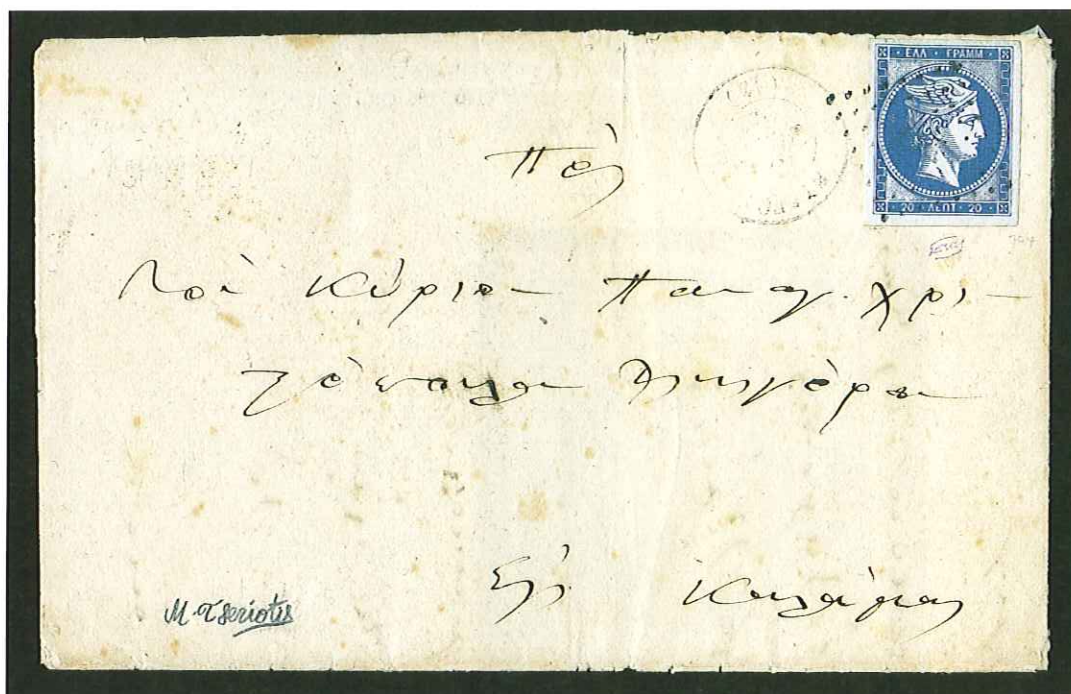
Unused copies or multiples of these stamps are not known. The exact status of nr. 8 III has not been established. It is believed that they constitute a kind of primitive essays of the control figures. Three copies have emerged up to now, one thought to have been destroyed during World War II.

8. **20l.**
- Ia. Prussian blue (quadrillé background)
 - Ib. Deep blue (quadrillé background)
 - Ic. Deep ultramarine (quadrillé background)

 - IIa. Deep blue (solid background)
 - IIb. Deep ultramarine (solid background)

 - III. Deep ultramarine (quadrillé background) with negative and inverted impression of figure "20" at the back
-





10055

20 Lep deep blue without control figures, QUADRILLE background hardly visible, a very fine example with good to large margins, sharp rich colour, neatly tied with clear "44" lozenge postmark of Karpenision, on complete 1862 entire to Athens, municipal boxed postmark "DT/64" of Kerasovon alongside, backstamped "Karpenision/10.July.62" and "Athens" cds alongside.

8lb

60'000

A most stunning usage on cover of this elusive stamp and famous Greek rarity, only a few covers known, cert. Tseriotis



10056 ☉

20 Lep deep ultramarine, without control figures on quadrillé background, used with large to huge margins, cancelled lozenge "13" of Pyrgos, superb appearance for this v.rare stamp, cert. Holcombe which states "one of the finest examples of this very rare stamp in existence" & cert. Tseriotis

81c

6'000



10057 ☉

20 Lep deep ultramarine, without control figures on solid background, large to very large margins, used with indistinct cancel, a v.fine example of the rarest of all the provisional types, ex. Alfieris, signed E.Diena & A.Diena, cert. Tseriotis

811b

6'000

- 9I. 1I.
a. Brown
- 10I. 2I.
a. Brown
b. Brown-bistre
c. Bistre
d. Pale bistre
- 11I. 5I.
a. Greyish green
b. Green to yellow green
c. Deep olive green
d. Vivid green
- No. Double control figure
Np. Missing control figure
- 12I. 10I.
a. Ochre-orange
b. Orange (shades)
c. Orange vermillion
- Na. "1" inverted
Nb. "0" inverted
Nk. Widely spaced digits at the back
- 13I. 20I.
a. Deep ultramarine
b. Indigo blue
c. Prussian blue
d. Deep blue (shades)
e. Deep dull chalky blue
- Nb. "0" inverted
No. Double control figures
- 14I. 40I.
a. Mauve on blue
b. Dull mauve on blue





10058 △ 2 Lep bistre-brown used on small piece, superb 10lb **80**



10059 * 5 Lep yellow-green mint pair, tiny thin spot on top margin of second stamp does not affect design, v.fine and scarce 11lb **600**



10060 * 5 Lep green mint, good to large margins, v. fine, ex. Maximus 11lb **160**



10061 * 田 5 Lep yellow-green mint BLOCK OF FOUR, good to large margins, fresh, v. fine and a rare multiple 11lb **4'000**



10062

5 Lep yellow green, two pairs (first stamp affected by a fold) used together on 1863 cover from Candia to Syros (arr. 1 Jan.), v.fine and attractive, ex. Binos

11lb

1'200



10063

5 Lep yellow-green used strip of four, clear to good margins, v. fine and scarce used multiple

11lb

500

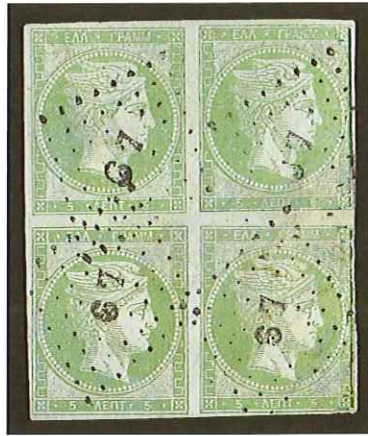


10064

5 Lep vivid green, two very fine vertical pairs affixed as a block of four, clear to good margins, tied "67" lozenge on 1864 folded cover from Chios with Austrian Levant SCIO-CESME/11.1 cds alongside, to Syros, cvr repair, an attractive and impressive combination

11ld

1'200



10065 ☉ 田

5 Lep vivid green USED BLOCK OF FOUR, clear to good margins, extremely fine as blocks are exceedingly rare, one of the finest of the few recorded used blocks

11ld

5'000



10066 ☒

10 Lep orange, two clear to large margined vertical pairs, neatly tied "15" lozenge, used on 1862 cover from Nafplion to Tripolis, first stamp affected by filling fold, v. fine, attractive & v. rare franking, ex. Maximus, cert. Tseriotis

12lb

3'000



10067 ☒

20 Lep deep ultramarine used together with Paris print 40 Lep and first Athens 13la+6a+11b+12lb 5 Lep (creased) and 10 Lep (touched) on cover from Nafplion (28 June 1862) to Triest, v. fine and v. scarce shade on cover in combination with others

1'200

Rate: 75 Lepta, being 20 lepta Greek domestic rate, plus 45 lepta Lloyd and 10 lepta (3 Kr.) Triest local



10068 *

20 Lep prussian blue mint, clear to good margins, some hinge remainders, v.fine for this extremely rare unused stamp, ex. Maximus

13lc

3'600



10069 Δ

20 Lep prussian blue, STRIP OF FOUR used on fragment, clear to good margins all round, together with 10 Lep(faults), v.fine & v.rare.

13lc+13l

4'000

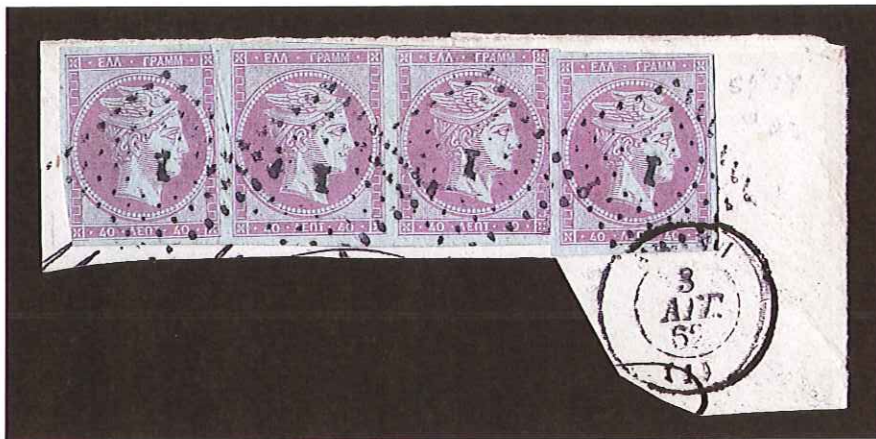



10070 Δ

20 Lep deep blue used on piece, v. fine

13ld

100



- 10071**  40 Lep mauve on blue, strip of three, two touched to large margins and single used together on fragment, the strip with a natural paper fold, fine and rare 14la **2'400**



- 10072**  40 Lep mauve on blue (2) + 20 Lep dark blue used together on 1862 cover from Leonidion to Constantinople, the three stamps are in v. fine to superb condition, all are of an extremely coarse impression, the 20 Lep with pronounced yellow wash, an extremely rare item - one of the most impressive First Athens covers we have seen 14la+13 **4'000**

Ex. Maximus (1984 Realised SFr.11'500), cert. Tseriotis

Rate: 100 Lepta, being double Austrian Lloyd rate of 60 lepta, plus double Greek domestic rate of 40 lepta, applicable between 15 and 22 1/2grs.



10073 * 田

THE FAMOUS ALFIERIS BLOCK

14lb 100'000

40 Lep dull mauve on blue, THE UNIQUE AND FAMOUS MINT BLOCK OF FOUR, in absolutely superb condition. For the sake of philatelic research we must say that we classify it as a coarse print rather than a fine impression. Considering the fact that even a single mint copy of the first Athens print 40 Lepta is a rarity in itself, the magnitude of this amazing item is immediately evident.

The only other known unused multiple is a pair. We believe that this is not only the ultimate showpiece of the first Athens print, but also THE MOST IMPORTANT UNUSED MULTIPLE of the whole Large Hermes Heads issue.

Ex. Alfieris, Gill, Tseriotis, cert. Tseriotis



10074 (*)

40 Lep dull mauve on blue unused, large even margins.

14lb 3'000

An absolutely superb stamp, rare, ex. Holcombe (1985 Realised SFr.4'222), cert. Tseriotis

- 9II.** 1I.
 a. Chocolate
 ab. Chocolate ("non typical" impressions)
 b. Bistre-brown
 c. Brown
 cb. Brown ("non typical" impressions)

9IIcb: This stamp is listed for the first time. It coexists with nr. 9IIc on the same sheets, It has clear shading lines but thicker than those of nr. 9IIc. It can easily be confused with the earliest printings of the next issue, the difference being that 9IIcb has absolutely no trace of relief. The coexistence of both types of impressions has also been observed at least once on the chocolate shade (the unique unused block of nine), thus establishing the existence of type 9IIab. The commercial value of types 9IIa and 9IIab should be the same. The commercial value of types 9IIc should be much higher than that of type 9IIcb.

- 10II.** 2I.
 a. Bistre
 b. Yellow-bistre

- 11II.** 5I.
 a. Green to yellow-green
 b. Deep green
 c. Emerald

- 12II.** 10I.
 a. Orange (shades)
 b. Yellow-orange

- Na. "1" inverted
 Nb. "0" inverted
 Nk. Widely spaced digits at the back
 No. Double control figure

- 13II.** 20I.
 a. Deep blue
 b. Blue

- 14II.** 40I.
 a. Mauve on blue
 b. Dull mauve on blue





10075

*

1 Lep deep chocolate mint pair, clear to good margins, crease at top, fresh, fine & extremely rare, signed A.Diena

9lla

1'600



10076

✉

1 Lep bistre-brown, top marginal single with good margins, tied lozenge "43" on 1862 newspaper, v.fine and rare, ex. Binos, cert. Tseriotis

9llb

2'000

Rate: 1 Lepta, being the domestic newspaper rate



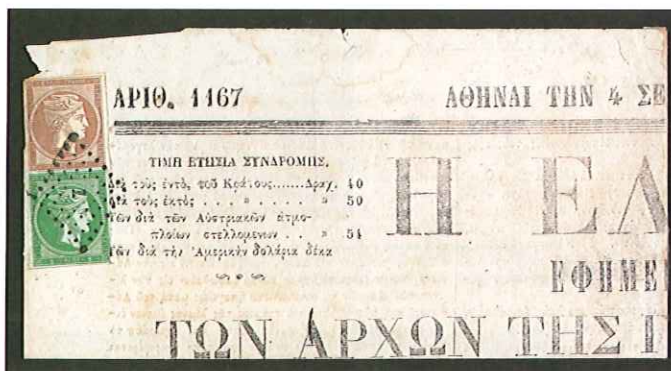
10077

✉

1 Lep bistre-brown, showing flaw below the neck, tied by "1" lozenge of Athens on newspaper dated July 31 1862, stamp just touched at BL. v. fine & very rare item, cert. Holcombe

9llb

1'500



- 10078** ☉ 1 Lep yellowish chocolate, clear to large margins, used, printed on vertically laid paper, marginal tear at top does not affect design, v. fine for this scarce stamp 9llb **200**
- 10079** ☒ 1 Lep bistre-brown, good margins, used in combination with 5 Lep on part 1862 newspaper, scarce, ex. Maximus 9llb+11lb **400**



- 10080** ☒ 1 Lep bistre-brown, clear to good margins, used in combination with Paris Print 9llb+2a+11lb+19b+22b **4'000**
 2 Lep, First Athens 5 Lep and 1862-67 20 Lep and 80 Lep pair (second stamp with faults) on 1863 cover from Patras to Lyon. The first Athens 1 Lep on cover is v. rare. A stunning three issue, five colour franking, impressive usage, cert. Tseriotis
- Rate: 188 Lepta, being one and a half times French rate, plus 20 lepta Greek domestic rate, applicable between 7 1/2 and 10grs.



- 10081** ☉ 5 Lira green used, 2 examples one of coarse print the other of a very fine print indeed, first Athens 5 Lira is an exception from the rule, being extremely rare in really fine print, both fine 111a+111a **160**
- 10082** ☉ 20 Lira deep blue, used vertical strip of three, clear to large margins, neatly cancelled with clear cds, middle stamp light crease, extremely fine appearance and very rare 1311a **800**



- 10083** * 40 Lira mauve on blue MINT PAIR, superb. A GREAT RARITY and the second largest known unused multiple. A great exhibition piece and a real philatelic gem, cert. Tseriotis 1411a **30'000**



- 10084** ☉ 40 Lira mauve on blue, used with large to very large margins, small marginal thin and a little discoloured, superb 1411a **100**
- 10085** (*) 40 Lira dull mauve on blue unused (regummed) fine and rare, cert. Tseriotis 1411b **2'000**

These issues contain an abundance of different impressions, shades, papers etc., which constitute an amazing and fascinating field for study.

80L WITH ORANGE CONTROL FIGURES:

It is a gross mistake to classify the 80l with orange control figures under the First Athens Print as neither its general characteristics and its method of printing, nor its time of issue have the slightest relation to those issues; on the contrary it has all the characteristics of the first printings of the 1862-67 issue.

THE SO CALLED "MAY 1862" ISSUE:

The attempt to classify the first printings of the 1862-67 period as a separate issue proved to be unfortunate and incorrect. This is accepted by the vast majority of recent students. Anyone seeking more information on this matter should refer to "PHILOTELIA" March-April 2001.

EARLIEST IMPRESSIONS:

These stamps are designated by the capital letter "A". They show a strong relief of the white parts of the picture, due to the change of the method of printing. The colour and the general appearance of both the picture and the control figures resemble those of the First Athens Print.

1862-1867 Issue

15. 11.
 A. Chocolate-brown
 a. Chocolate-brown
 b. Brown (shades)
 c. Red-brown
 d. Claret-brown
 e. Red-brown (with "short beard")

Fa. Broken plate (pos. 44)

Note: There are plenty of stamps with vertically lined background (especially of 15A and 15a) or with spotted background. There are also copies on vertically laid paper.

16. 21.
 A. Pale bistre
 a. Pale bistre
 aPa. Yellow-bistre on thin paper
 b. Bistre
 bPa. Bistre on thin paper
 c. Brown-bistre
 d. Deep grey-bistre

17. 51.
 A. Green
 a. Green (shades)
 b. Yellow-green (shades)
 c. Olive green

Nm. Inverted control figure
 No. Double control figure

Note: Both 17a and 17b belong to the yellow-green group with "yellow" or "green" shades

18. 101.
 A. Yellow-orange
 a. Yellow-orange
 b. Orange
 c. Reddish flesh (salmon)
 d. Yellow-orange to orange on blue
 e. Red-orange on blue
 f. Red-orange

Na. "1" inverted
 Nd. "01" instead of "10"
 Nk. Widely spaced digits at the back
 Nm. Inverted control figure
 Nn. Control figure printed on recto in inverted position on 18d (Zante error)
 No. Double control figure

19. 201.
 A. Sky-blue
 a. Sky-blue
 b. Blue to greenish blue
 c. Grey-blue
 cPb. Grey-blue on thick paper
 d. Light to dark grey blue (oxidised corners)
 e. Blue on green
 f. Deep blue
 g. Deep dark blue

Note: These are examples of 19d in dark grey blue without "oxidised corners". The "oxidised corners" occur on other shades.

Nk. Widely spaced digits at the back
 Ne. "80" instead of "20"
 No. Double control figure

- 20I. 401.
 A. Light mauve on blue
 a. Light mauve on blue
 b. Mauve to deep mauve on blue
 c. Mauve on greenish blue
 d. Grey-mauve on blue
 e. Purplish mauve on blue
 f. Bright purplish mauve on blue

Nk. Widely spread digits at the back
 No. Double control figure

- 20II. 401.
 a. Greyish rose on grey-lilac
 b. Rose-red on grey-lilac

No. Double control figure

21. 801.
 a. Carmine (orange control figure)
 b. Rose-carmine (orange control figure)

Note: It is the only 80 lepta stamp with orange C.F. All the later printings have carmine control figure. There are copies on vertically laid paper.

22. 801.
 A. Rose-carmine
 a. Rose-carmine
 b. Carmine to deep carmine
 c. Cherry-red
 d. Dull carmine

Na. "8" inverted
 Nk. Widely spaced digits at the back
 Nm. Control figure inverted
 Nj. Partial print (only traces) of "0"
 No. Double control figure

Note: No. 22c was used in Patras.



10086 **
田

1 Lep brown-chocolate mint nh block of six, good to large margins, fresh & v. fine

15a

140

10087 *

1 Lep chocolate mint, two examples in different shades with plate flaws, both fine

15a

100

10088 *
(*)

1 Lep chocolate-brown (two mint examples) + 1867-69 1 Lep (two unused, one without gum), all v. fine

15a

100

10089 ** *
(*)
田

1 Lep chocolate-brown mint block of four, v. fine, also brown chocolate earliest impression, unused strip of three (pinhole on one), both fine

15a

150



10090 * * * 田

1 Lep brown mint block of forty with complete sheet margins on all sides, one stamp with small tear and some usual light gum creases, v. fine for this

15b

1'200

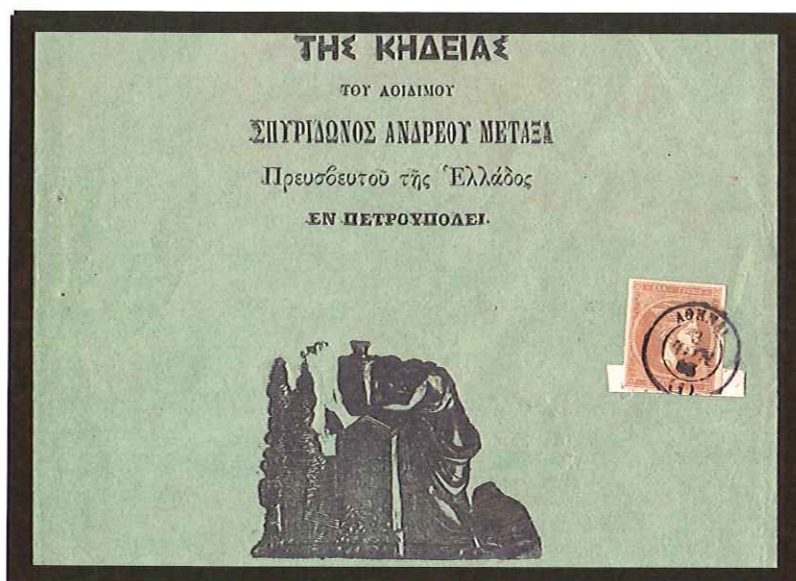


10091 ◎

1 Lep purple-brown (superb) and red-brown (v. fine), good to large margins, scarce used shades

15d, 15e

800



10092

2 Lep bistre, tied Athens 3 FEB 69 cds on printed matter (small booklet with the funerary details of S.M Metaxa, Ambassador of Greece to Russia), v. fine & unusual

16b

700



10093

2 Lep bistre, a magnificent BLOCK OF TEN with clear to large margins, neatly cancelled on reverse of 1877 folded entire from Nafplion to Patras, a superb usage and unique franking showing a block of ten, probably the largest known multiple, cert. & signed Holcombe, cert. Tseriotis

16b

3'000



- 10094** ** * 田 2 Lep brown-bistre, mint sheet marginal block of 50, small thins & tiny blue spot on face, very fine appearance, rare

16c

600

- 10095** ** * 5 Lep green and yellow-green, two mint strips of three, both v. fine

17a,17b

800

- 10096** ** * 田 5 Lep yellow-green mint block of six, v.fine and rare

17b

1'600



10097 * 田

5 Lep yellow-green mint block of four, good to large margins, tiny hinge thin, vivid shade, fresh, very fine and scarce

17b

800



10098 田

5 Lep yellow-green strip of four, good to large margins, neatly tied "29" lozenge on folded cover from Nission, fresh & very fine, ex. Lascarides

17b

300



10099 田

5 Lep yellow-green used block of four, in-between ironed-out crease, left pair with some rubbing on face, still fine for this rare block

17b

700



- 10100** * 10 Lep yellow-orange mint pair, good to very large margins, excellent colour & sharp impression, superb appearance

18a **600**



- 10101** ** * 田 10 Lep yellow-orange mint block of four, good to large even margins, top pair creased, extremely fresh, excellent colour and rare

18a **2'400**



- 10102** ◎ 10 Lep yellow-orange used strip of three, good to large margins, pos. 38-40, position 40 with plate flaw "swollen circle at right", v. fine and v. rare variety in a strip

18a **150**



- 10103** * 10 Lep orange mint pair, large to very large margins, fresh & v.fine

18b **320**



10104 *
(*)

10 Lep orange, mint, good to large margins, fresh vivid colour & v.fine

18b

150



10105 ☉

10 Lep orange used together with same issue 20 Lep and 80 Lep on cover from Vienna to Athens (arr. 17 Apr. 1868), v. fine, ex. Binos

18b+19b+22b

180



10106 ☉

10 Lep yellow-orange on blue, good to huge margins with control figures printed on the face, the "ZANTE ERROR", used with "ZAKYNTOS 4 (OCT 67)" datestamp, a v. fine example of this great rarity, only 15 examples are recorded as stated by Countdourous, cert. Tseriotis

18dNn

10'000



10107 ** * 田

10 Lep red-orange on blue, good even margins all round, a magnificent mint BLOCK OF NINE, bottom row with light gum crease, extremely fine for this, the largest known mint multiple of this shade, an important exhibition showpiece

18e 12'000



10108 ◎

10 Lep red-orange on blue used strip of four, very close to good margins, cancelled "99" (Janina), v. fine and a very rare used multiple

18e 800



10109 ◎

10 Lep red-orange, used top right corner marginal, superb

18f 50



10110

10 Lep + 20 Lep + 80 Lep used as dues on 1867 cover from London to Patras, the 18Nd+19+22
10 Lep (v. fine) shows "01" instead of "10" at the back, two stamps have been
removed and hinged back to show the error, v. fine and rare on cover

400

Rate: 110 Lepta, being French ship rate from 1867



10111

20 Lep blue with "80" INSTEAD of "20" CONTROL FIGURES variety, good to large
margins, used on 1862 (21 Oct.) cover from Nission to Syros, cover with small
rub at lower right, stamp removed for examination and placed back, v. fine and
extremely rare on cover, ex. Maximus, cert. Tseriotis

19aNe

4'000



10112 ☒

20 Lep grey-blue, good margins, used in combination together with 40 Lep (two, both evenly oxidized), tied Syros cds on 1867 cover from Liege, Belgium, via Marseille, boxed "F.67" hs and full range of postmarks on front and back, a fine and rare franking, signed Holcombe

19c+20lb

500

Rate: 100 Lepta, being French ship rate from 1867



10113 *

20 Lep dark grey-blue (oxidized corners) mint, good to very large margins, some paper adherence at back, v.fine and rare, signed A.Diena

19d

600

10114 (*)

20 Lep grey blue (oxidised corner) unused, good to large margins, v.fine and extremely rare

19d

300



10115 ☉

20 Lep grey-blue (oxidized corners), good even margins, used with "9" (?) numeral cancellation of Patras and showing DOUBLE control figures, v. fine and extremely rare specially in this condition, ex. Binos

19dNo

700



10116 *

20 Lep blue on green mint, v.fine and rare

19e

600



10117 ☒

40 Lep mauve used together with same issue 2 Lep, 10 Lep and 80 Lep on 1863 cover from Marseille to Athens (arr. 21 Nov.), v. fine and attractive, ex. Binos

201b

500

Rate: 132 Lepta, 112 Lepta French ship rate, plus 20 Lepta Greek domestic rate



10118 ☉

40 Lep mauve, just touched to good margins, used with slightly DOUBLE figures at back, very scarce

201b

80

10119 *

40 Lep greyish rose on grey lilac mint with plate flaw "hook on meander at lower right", small thins but with superb margins and of excellent fresh colour, most probably the only mint example with this variety

201a

800

10120 *

40 Lep greyish rose mint, good to large margins, excellent colour, superb and extremely rare in this condition, ex. Binos

201a

600



10121 ☒

40 Lep rose-mauve on lilac, used together with same issue 10 Lep orange on blue, used as dues on 1867 cover, with French P.O.'s "Constantinople" cds alongside, v. fine

201a+18d

120

Rate: 50 Lepta, being 30 lepta French ship, plus 20 lepta Greek domestic rate

10122 

40 Lep mauve, diagonally bisected, used to pay postage due together with 10 Lep orange on blue on unfranked cover from Sparta to Argos. The cover shows "SPARTI/4.OCT.70" cds and the stamps are cancelled with lozenge "14" of Argos, red manuscript "30" alongside, in addition at right is a white label also tied by lozenge "14" & bears a complete strike "Pliromi ypohreotiki" (obligatory payment) handstamp.

21+19

12'000

The cover comes from the famous Binos collection and is signed on reverse by the famous Swiss expert Dr.G.Fulpius. It is illustrated and fully described in Philotelia, March-April 1960 (magazine included). All postmarks are genuine, although the instructional handstamp is not known used in this manner and we cannot explain the rate. The Argos post office is known to have been managed during this period by a rather eccentric postmaster as there exist a few bizarre usages from this place. The absence of arrival pmks is rather the rule than the exception and this can be verified from the fairly large number of surviving letters from this post office.



10123

80 Lep carmine, good to large even margins, used on cover from Syros to Athens, v. fine

21a

80



10124 ***

80 Lep rose-carmine mint, marginal block of eight, v. fine

22a

240



10125

80 Lep light rose-carmine, two singles, used together with same issue 10 Lep on 1863 cover from England to Athens (arr. 14 Nov.), v. fine, ex. Binos

22a+18b

300

Rate: 170 Lepta, being 150 lepta French ship, plus 20 lepta Greek domestic rate

10126 *

80 Lep carmine, mint vertical pair, clear to large margins, showing CONTROL FIGURES SHIFTED variety, v. fine and rare

22b

80



- 10127** Δ 80 Lep carmine (8 incl. strip of three) together with 40 Lep + 20 Lep + 10 Lep + 5 Lep tied PATRAS cds's on fragment, this is a very high & rare postage of paying 715 lepta, spectacular 5-colour franking 22b **700**



- 10128** \odot 80 Lep carmine used STRIP OF EIGHT, good to large margins all round, two stamps with thins or tears, v.fine for this outstanding used multiple and of the greatest rarity 22b **3'000**



- 10129** \odot 80 Lep deep carmine, eight singles and pair in diff. shades, all fine to v.fine 22b **100**



10130 ☉ 田

The Maximus Block

22b

6'000

80 Lep carmine, used BLOCK OF TEN, good to large even margins, small tears on two stamps, a stunning used multiple & extremely fine for this great rarity, an important exhibition showpiece



10131 ☉ 田

80 Lep carmine used BLOCK OF SIX, clear to large margins, v. fine and a v. rare used multiple, ex. Maximus

22b

1'200

10132 ☒

80 Lep deep carmine pair with very large even margins (superb) + 10 Lep used on 1863 cover from London to Patras, v. fine, ex. Maximus

22b+18

300

Rate: 170 Lepta, being 150 lepta French ship, plus 20 lepta Greek domestic rate



10133 ☉

80 Lep carmine with '0' at back missing, v. fine and rare

22bNj

400

These issues followed a thorough cleaning of the plates of all seven values. The first printings were very clear and fine but very soon the quality of the printing deteriorated and later impressions are full of ink spots and not looking "clean" at all. Recent evidence shows that the 40l. value may have actually been printed in 1867 and thus sometimes the issue is designated as 1867-69, however no examples used prior to 1868 have been found.

Note: Louis Basel has shown in his recent work that the fine quality of these printings may not be due to a cleaning of the plates but to a change in the method of printing. For further information, refer to Mr. Basel's study and to "Philotelia" nr.6 15/M Tseriotis's article.

The 80l. was printed in 1873. It is the first printing of this denomination made after the cleaning of the plates and shows all characteristics common to the other six values of this issue. However, its classification under the 1871-76 issues is equally acceptable and correct.

23.	11.	27.	20l.
a.	Deep red-brown (shades)	a.	Sky-blue to blue (shades)
b.	Deep to light greenish brown	Na.	"0" inverted
c.	Reddish brown (medium to light)	Nk.	Widely spaced digits at the back
Fa.	Broken plate (pos. 44)	No.	Double control figure
Fb.	Broken plate (pos. 55)		
24.	2l.	28.	40l.
a.	Grey-bistre	a.	Grey-mauve on blue
b.	Dull grey-bistre	b.	Mauve on blue
25.	5l.	Nb.	"0" inverted
a.	Green to yellow-green	Nf.	Wrong control figure "20", corrected to "40"
b.	Grey-green	No.	Double control figure
26.	10l.	29.	80l.
a.	Red-orange	a.	Rose-carmine (1873)
b.	Reddish flesh (salmon)	b.	Carmine (1873)
c.	Orange on greenish yellow	bPa.	Carmine on thin paper (1873)
Na.	"1" inverted	Ni.	Partial print (only traces) of "1"
Nb.	"0" inverted	Nj.	Partial print (only traces) of "0"
Nc.	Both figures inverted	Nk.	Widely spaced digits at the back
Nk.	Widely spaced digits at the back	Nl.	"0" in shape of keyhole
Nm.	Control figure inverted	Nm.	Control figure inverted
No.	Double control figure		





- 10134** *** 田 1 Lep deep red-brown mint block of four, good to large margins, one defective & bottom pair creased 23a **150**



- 10135** ◎ 田 1 Lep deep red-brown used block of ten, one sl. gum-crease, v.fine appearance, extremely rare 23a **1'600**



- 10136** *** 10 Lep red-orange vertical mint pair, good to large margins, light insign. gum bend, excellent colour & sharp impression, very fine and extremely rare mint pair 26a **2'400**



- 10137** * 10 Lep red-orange mint pair, large even margins, marginal thins at top, otherwise v.fine and extremely rare

26a **1'200**



- 10138** * 10 Lep red-orange mint, large to huge margins, superb

26a **700**



- 10139** * 10 Lep red-orange mint, good to large margins, small annotation at the back, v. fine and rare

26a **700**



- 10140** ☉ 10 Lep red-orange strip of five used with Thira cds in green, close to huge margins, somewhat faded & one creased, in the middle, extremely fine appearance for this very rare used multiple

26a **600**



- 10141** ☉ 20 Lep blue used, close to large margins, showing vertical DOUBLE CONTROL FIGURES variety, creased, v. fine and scarce (Coundouros 38.1c)

27a **600**



- 10142** *** 田 40 Lep grey-mauve on blue mint block of four, good to large margins, slight hinge thins, v. fine and rare

28a **600**



- 10143** ◎ 40 Lep rosy-mauve, used, showing 'O' at CONTROL NUMBER INVERTED, large to very large margins, superb appearance (Coundouros 39.3)

28aNb **100**



- 10144** *** 田 40 Lep mauve on blue mint block of nine, central stamp with "erroneous 20 corrected to 40" at the back, v. fine and rare



28bNf **7'000**



10145



40 Lep mauve, two superb examples + 10 Lep (frameline touched at top) used on 1869 cover from Paris to Athens, middle 40 Lep with "20" corrected "40" at back.

28Nf+28+26

8'000

A superb and probably unique example of this error on cover, exhibition piece, ex. Maximus (1985 realised SFr.21'850), cert. Tseriotis

Rate: 90 Lepta, being rate for unpaid letters, valid from 1867.



10146 ***

80 Lep carmine, mint strip of four, just touched to very large margins, small faults, middle pair superb

29b

160



10147 ☉ 田

80 Lep carmine used BLOCK OF TEN, just clear to large margins, somewhat defective, an important used multiple and of the greatest rarity, cert. Tseriotis

29b

10'000

It is believed that this print of only two values was made in Athens under the supervision of German craftsmen. The result was rather disappointing and these stamps are usually called "shaved" because of their peculiar appearance.

- 30.** **11.**
 a. Light reddish brown
 b. Reddish brown
- Fa. Broken plate (pos. 44)
Fb. Broken plate (pos. 55)
- 31.** **20l.**
 a. Deep greyish blue (so-called "bleu de Sèvres")
 b. Sky-blue
 c. Blue to deep blue
 d. Vivid deep blue
- NdI. "02" instead of "20" (normal "0")
NdII. "02" instead of "20" ("0" inverted)
Nm. Control figure inverted
No. Double control figure





10148 * 田

1 Lep reddish brown mint block of four, clear to good margins, small corner crease and insignificant thin spot on one, also trivial marginal thinning and tiny scissor cut in-between at top, mentioned only for accuracy.

30b 4'000

Very fine and an exceedingly rare multiple, ex. Maximus (1985 realised SFr.16'100)



10149 ◎

20 Lep sky-blue, clear to good margins, used with faint double "kiss printing" of the control figures, fine, scarce & an unusual variety

31a var 100

These stamps are usually called printings on "paper of inferior quality". Actually the paper of this issue does not differ much from the papers used during the preceding issues. In fact the 1870-72 printings are the continuation of the "cleaned plates" printings.

- 32.** **1l.**
a. Red-brown
b. Purplish brown
- Fa. Broken plate (pos. 44)
Fb. Broken plate (pos. 55)
- 33.** **2l.**
a. Yellow-bistre
aPa. Yellow bistre on thin paper
b. Rose-bistre

*Note: There is a very large number of stamps c.t.o
(mainly with "KEPKYPA" cds).*

- 34.** **5l.**
a. Yellow-green to sage green
- Nm. Inverted control figures
No. Double control figure
- 35.** **20l.**
a. Sky-blue
b. Grey-blue
c. Blue
d. Steel-blue
e. Deep blue
- Nb. "0" inverted
Nd. "02" instead of "20"
Nk. Widely spaced digits at back
No. Double control figure
-
- 36.** **40l.**
a. Lilac-rose on greenish
 ("Solferino")
b. Rose-bistre to bistre on greenish
c. Yellow-bistre on greenish
- Nb. "0" inverted





10150 ☉

20 Lep grey-blue bottom left corner marginal strip of three, used with illegible cancel (possibly "49" of Messalonghion), touched to huge margins, all showing DOUBLE CONTROL FIGURES variety, of greatest rarity and most possibly unique in a multiple, showpiece (Coundouros 47.1)

35bNo

1'500



10151 (✕)

The spectacular 390 Lepta franking

35c

28'000

20 Lep blue, two strips of five + two strips of four + single + 10 Lep single, all tied by scarce SKIATHOS cds's on cover front to Napoli, there are a few faults as expected but the whole is full of character and must be one of the most important & spectacular frankings of Greek Philately, outstanding exhibition showpiece & one of the highest Large Hermes Heads frankings recorded

Rate : 390 Lepta, being triple weight registered, valid from 1865. (3x65 lepta = 195 lepta triple weight simple letter). The general regulation for all registered letters was for these to be charged with double the amount due for simple ones. Although the 1865 treaty between Greece and Italy provided for a 55 lepta universal registration fee, it seems that in this case this was overseen and the general rule of double postage was applied.



10152 *

20 Lep steel-blue mint STRIP OF FOUR, good to large margins, some thins at places, large part original gum, most probably unique in a mint strip.

35d

4'000

A most important exhibition item, ex. Maximus (1983 realised SFr.10'925)



10153 Δ

The unique stamp on fragment

36a 100'000

40 Lep lilac-rose, SOLFERINO, just touched to large margins, neatly tied on fragment by "PIRAEUS 12.JUL.71" cds, with additional "CONSTANTINOPLE (TURKEY) 9 JUL 71" cds alongside, excellent colour & sharp impression for this.

The unique example used on a fragment, cert. Tseriotis

Example VIII in the Williams classification

Provenance: Zinopoulos, Jones & Maximus



10154 *** 田

40 Lep rose-bistre on greenish, mint block of four, good to large margins, top right stamp with plate flaw "hook on meander at lower right", usual gum creases, v. fine and v. rare

36b

3'000



10155 (*)

40 Lep rose-bistre on greenish, unused, very large even margins, superb

36b

160



10156 (✉)

40 Lep rose-bistre on greenish used together with 1868-69 20 Lep on 1871 inland cover front, v. fine, ex. Binos

36b+27

150

Rate: 60 Lepta, being the triple domestic rate

During this period the paper used in the case of 5, 10, 20 and 40l. values shows a characteristic mesh. The 1l. is of a very oily impression and the 2l. is on thin paper.

37. 1l.
a. Grey-brown
b. Brown
c. Red-brown

- Fa. Broken plate (pos. 44)
Fb. Broken plate (pos. 55)

38. 2l.
a. Grey bistre

Note: We list this stamp under these issues with reservations as there is no concrete evidence that it was printed during this period and not earlier.

39. 5l.
a. Sage-green
b. Yellow-green
c. Greyish green
d. Emerald
e. Deep green to deep olive-green

- No. Double control figure

40. 10l.
a. Orange
b. Red-orange
c. Orange-vermilion
d. Orange-vermilion on lavender

- Na. "1" inverted
NbI. "0" inverted
NbII. "0" inverted and widely spaced digits at back
Nd. "01" instead of "10"
Nk. Widely spaced digits at back
Nh. "0" instead of "10"
Nl. "0" in shape of "keyhole"
Nm. Control figure inverted
No. Double control figure
Np. Missing control figure

Note 1: There are impressive misprints or slight double impressions due to "kiss print".

Note 2: There are impressive shifts of the printing of the control figure of No. 40d. so that, in some cases "0" appears at the left on the back side and "1" at the right.

41. 20l.
a. Bright sky-blue
b. Deep blue
c. Blackish blue
d. Blue to dull blue (shades)
e. Indigo blue
f. Lilac-blue
g. Steel-blue
h. Blue on blue

Note: Some shades of 41c are similar to the deep ultramarine of the first Athens issue.

- Nb. "0" inverted
Nj. Partial print (only traces) of "0"
Nk. Widely spaced digits at back
NII. "0" in shape of "keyhole"
NIII. "0" in shape of "keyhole" and inverted and widely spaced digits at back
Nm. Control figure inverted
No. Double control figure

- 42I. 40l.
a. Dull olive-green on blue
b. Bistre on blue
c. "Bronze" on blue

- Nl. "0" in shape of "keyhole"

- 42II. 40l.
a. Greyish magenta on blue
ab. Greyish magenta on blue (control figures in dull olive-green)
b. Dull grey-mauve on blue
c. Purplish mauve on blue
d. Deep bright purple on blue ("Grosseille")

Note (42IIa): There is a variety of widely differing shades due to inconsistency of the ink (shades range from reddish lilac to pale greyish magenta). Types 42IIb and 42IIc (and c) are actually the two opposite extremes of the whole range.

- Nk. Widely spaced digits at back
Nl. "0" in shape of "keyhole"
Nj. Partial print (only traces) of "0"
Ni. Partial print (only traces) of "4"
No. Double control figure

29. 80l.
This stamp can be classified under these issues, if strict chronological order is followed.





10157 *

1 Lep grey-brown mint, three different shades, all v.fine

37a/37c

150



10158 *** 田

1 Lep brown mint left sheet marginal block of four, v. fine

37b

100



10159 *

5 Lep yellow-green mint pair, v.fine and rare

39b

800



10160 *

5 Lep yellow-green mint light gum crease still fine for this

39b

200



10161 ☉

5 Lep yellow-green, just touched to good margins, showing DOUBLE CONTROL FIGURES variety, being the rarer widely spaced category of this error, some faults, very rare showpiece (Coundouros (51.2))

39bNo

1'200

**10162** ☉ 田

5 Lep greyish green block of four, good to large margins, cancelled by two clear strikes "NAFPLION/22.MAR.78" cds, bottom right stamp thinned, extremely fine appearance for this v.rare multiple

39c

2'400**10163** *

5 Lep deep green mint, good to large margins, usual gum creases, extremely fine appearance

39e

240**10164** (*)

10 Lep orange unused, pos. 40 with plate flaw "swollen circle at right", fine and v.rare in unused state

40a

300**10165** *

10 Lep orange, mint, bottom sheet marginal, showing MISSING CONTROL FIGURES variety, a tiny paper airhole, not detracting from this extremely rare showpiece with excellent colour & impression

40aNp

10'000

A very fine example of this variety which in unused condition is of the greatest rarity, cert. Tseriotis

10166 *

10 Lep red-orange mint, good to very large margins, hinge remains, v. fine

40b

300

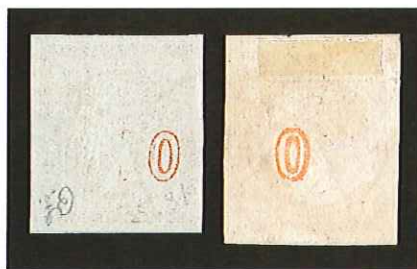


10167 ☉

10 Lep red-orange, used vertical pair, close to large margins, upper stamp showing inverted control figures, the other without control figure & "thin circle" variety, an outstanding exhibition item, cert. Holcombe, ex. Binos (Realised SFr. 11'000 in 1983)

40b

4'000



10168 ☉

10 Lep red-orange and 1880-85 10 Lep used, both showing MISSING "1" CONTROL FIGURES variety, v. fine and scarce

260



10169 ☉

10 Lep red-orange, used, good to large margins, showing MISSING CONTROL FIGURES variety, small thin, very fine and very rare

40bNp

800

**10170** * * * 田

20 Lep dull blue, mint BLOCK OF FOUR, top stamp of right pair with a tear and bottom one with frameline touched at right and some creases.

41d

12'000

An important unused multiple & a great rarity, only two mint blocks known

**10171** ◎

20 Lep deep blue used, DOUBLE IMPRESSION, small faults but v. rare, ex. Maximus

41var

500**10172** *

40 Lep rosy-mauve on blue mint, good to very large margins, v. fine

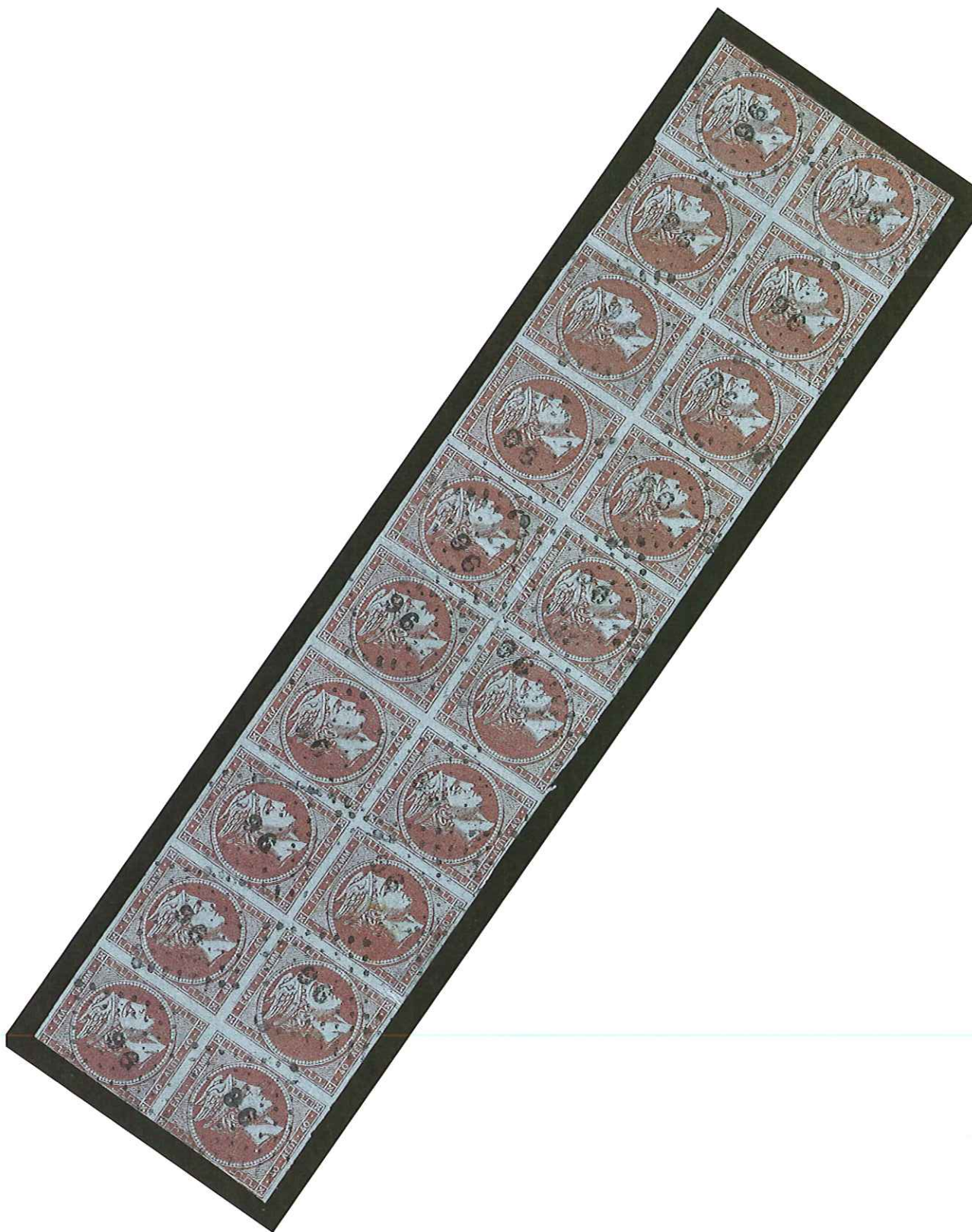
42IIa

400**10173** * 田

40 Lep greyish magenta on blue, mint, left sheet marginal BLOCK OF FOUR, top pair with creased, fine and v. rare

42IIa

2'000



10174 © 田

40 Lep greyish magenta, used BLOCK OF TWENTY, being two complete rows, all neatly cancelled "96" (Smyrna), some usual defects as expected with such a very large used multiple, still 13 stamps absolutely superb & of the highest rarity, a great exhibition piece, cert. Tseriotis

42IIa **26'000**



10175 ☉

40 Lep dull greyish mauve on blue, used, just touched to large margins, showing DOUBLE CONTROL FIGURES variety and misplaced figures (Constantinides pp. 439-40) v.fine top sheet marginal, cancelled "Volos 17 Nov. 1872" cds in blue, according to Constantinides only three stamps known with blue cancel, ex. Duween (Coundouros 54.2, states "An extremely rare error.")

42IIaNo

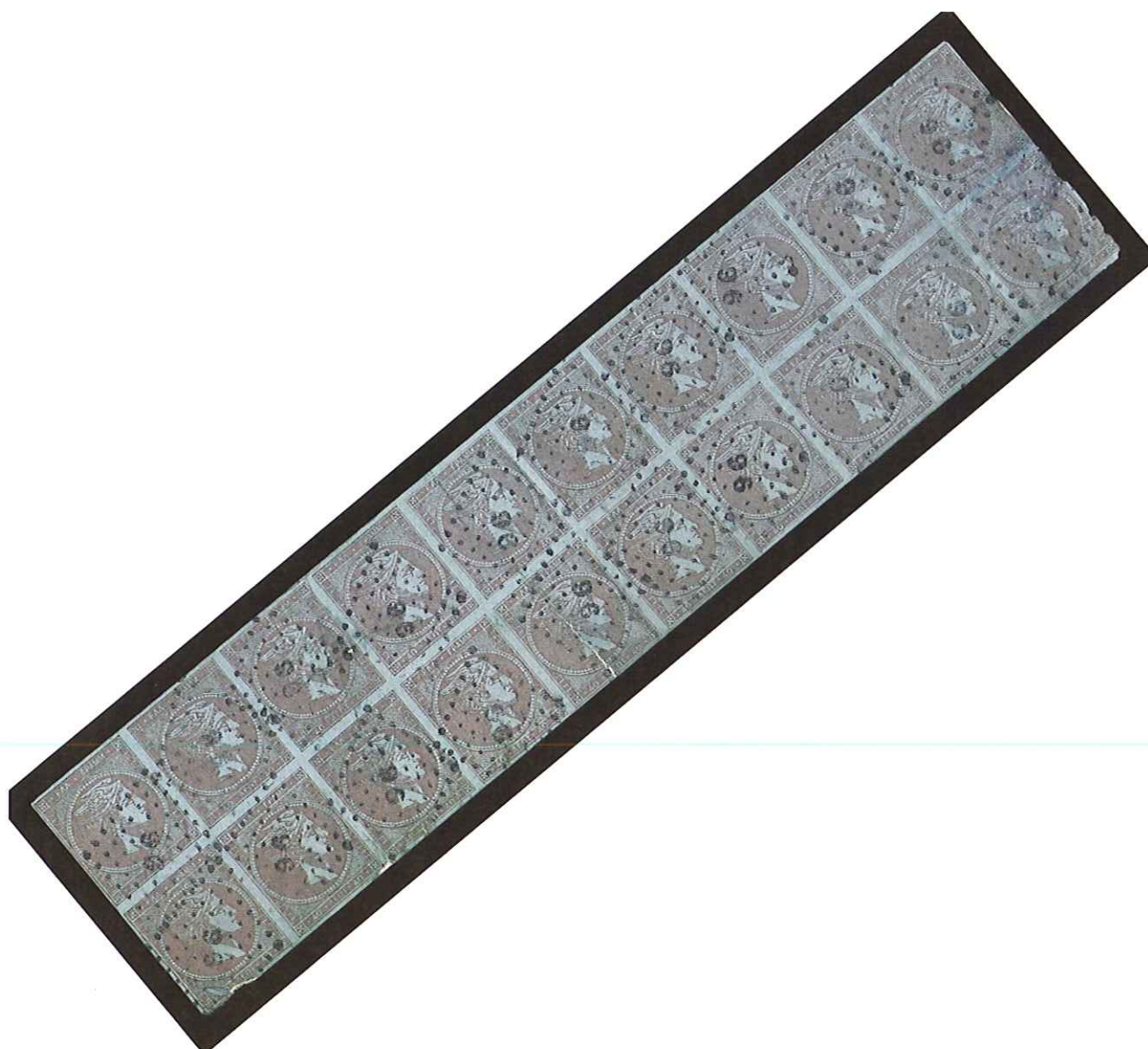
800

10176 ☉

40 Lep dull grey-mauve on blue used in Constantinople, superb

42IIb

100



10177 ☉ 田

40 Lep dull grey-mauve on blue, USED BLOCK OF TWENTY (two complete horizontal rows), cancelled "96" (Smyrna) stuck on piece of paper on which it probably belongs, some faults but with almost complete margins all round (mostly large) and fine colour, a great exhibition rarity

42IIb

15'000



10178

**
* 田

40 Lep purplish mauve on blue mint left sheet marginal BLOCK OF FOUR, v. fine
and v. rare

42llc

5'000

In 1875, when Greece joined the U.P.U. (Universal Postal Union) as a founding member, the issue of the new values of 30 and 60 lepta became necessary (to cover the simple and registered foreign letter rate). The new plates were again made by A. Barre in Paris. Excellent print equal to that of 1861. The 60l. was actually used for double rate foreign letters, as registration fee was fixed at 20 lepta.

43. **30l.**
a. Yellowish brown
b. Deep olive-brown
44. **60l.**
a. Deep green on green

1876-1877 New values - Athens print

45. **30l.**
a. Olive-brown (shades)
aPa. Olive-brown on thin paper
b. Brown (shades)
c. Brown to sepia on yellowish
d. Sepia
dPa. Sepia on thin paper
e. Red-brown (shades)
f. Yellowish-brown (never issued)
- Va. Quadrille background
46. **60l.**
a. Deep green
b. Dark green
bPa. Dark green on thin paper
- Fa. Broken lower tablet and margin
 line (various states)





10179 E

ORIGINAL DIE PROOF for 60 Lep value in black, some toning, a very fine proof of the greatest rarity, signed Holcombe, cert. Tseriotis

9'000



10180 *** 田

30 Lep olive-brown, mint block of twelve, some paper adherence on one, v. fine and impressive

43b

15'000

The largest known multiple of this stamp, cert. Tseriotis

**10181** ☉ 田

30 Lep Dark olive brown, part sheet of FIFTY cancelled with ALEXANDRIA cds & various pen-cancels, generally good to large margins, few stamps touched & faults, cert. Tseriotis

45

4'000

The largest known used multiple, exhibition showpiece

**10182** *** 田

30 Lep brown, mint block of nine, good to large margins all round, one stamp defective and another with small thin & crease, fine and extremely rare

45b

400



10183 *

60 Lep deep green mint, large to very large margins, v. fine

46a

300



10184 ☒

60 Lep deep green, large to huge margins, used on 1878 (14 Nov.) cover from Athens to Chios, backstamped with Syros (15 Nov.) transit cds, v. fine and rare, cert. Tseriotis

46a

3'000

Rate: 60 Lepta, being the double UPU rate



10185 ☒

60 Lep deep green (small scissor cut at BL) tied by Athens cds on cover to Chios, stamp with marginal line at left, very scarce item of wonderful appearance, cert. Holcombe

46a

1'700

Rate: 60 Lepta, being the double UPU rate



10186 ☉

60 Lep deep green used strip of three, large to very large margins, superb and an extremely rare used multiple, ex. Maximus

46a

600



10187 ☉ 田

60 Lep deep green, the USED BLOCK OF EIGHT, some thinning on top pair and second pair from bottom with a crease, still v. fine for this. This is the largest known used multiple of the 60 Lep value and the top piece of the "new values" issues. A great and most impressive exhibition showpiece

Ex. Tseriotis, cert. Tseriotis

46a 20'000



10188



60 Lep deep green and 1875-80 20 Lep dull ultramarine, both with large to huge margins, showing portions of the adjacent stamp at top, used together on 1879 cover from Athens to Palermo, both v. fine to superb, a most beautiful and very rare exhibition piece, ex. Maximus, cert. Tseriotis

46a+51

4'000

Rate: 80 Lepta, being the double UPU 60 lepta rate and 20 lepta registration fee



10189



60 Lep dark green used on 1877 cover from Athens to Constantinople, a v. fine and rare single franking, ex. Maximus, cert. Tseriotis

46b

3'000

Rate: 60 Lepta, being the double UPU rate

47. 11.
 a. Dark brownish-purple
 b. Deep dark brown
 c. Deep red-brown

- Fa. Broken plate (pos. 44)
 Fb. Broken plate (pos. 55)

48. 21.
 a. Deep grey-bistre

Note: We list this stamp under these issues with reservations as there is no concrete evidence that it was printed during this period and not earlier.

49. 51.
 a. Yellow-green on white
 b. Yellow-green (shades)
 c. Deep yellow-green to light olive green
 d. Deep green
 e. Emerald-green to bright deep green
 f. Vivid green
 g. Green to deep green (shades)

- No. Double control figure

Note: It seems that the same dark-coloured ink of the 60l. was at some time used to print the 51. value as well. In all probability, this caused a confusion between the stamps of these two values, which led to the change to an ink of a lighter shade. No. 49d. has the same colour as the 60 lepta No. 46a. and is an important rarity.

50. 101.
 a. Orange on white
 b. Orange (shades)
 bPb. Orange on thick paper
 c. Red-orange
 d. Orange on yellowish
 e. Brownish red

- Vb. Double print

- Na. "1" inverted
 Nb. "0" inverted
 NcI. Both digits inverted
 NcII. Both digits inverted and widely spaced apart
 Nd. "01" instead of "10"
 NeI. "00" instead of "10"
 NeII. "00" with the second "0" inverted
 Ng. "1" instead of "10"
 Nh. "0" instead of "10"
 Nk. Widely spaced digits at back
 NII. "0" in shape of "keyhole"
 NIII. "0" in shape of "keyhole" and inverted
 Nm. Control figure inverted
 No. Double control figure
 Np. Missing control figure

Note: There are copies of No. 50a. on vertically laid paper. Some examples of No. 50c. have control figures in a distinctive dark brick-orange shade.

51. 201.
 a. Light Prussian blue on white
 b. Blue (shades)
 c. Royal blue
 d. Indigo blue
 e. Prussian blue
 f. Ultramarine

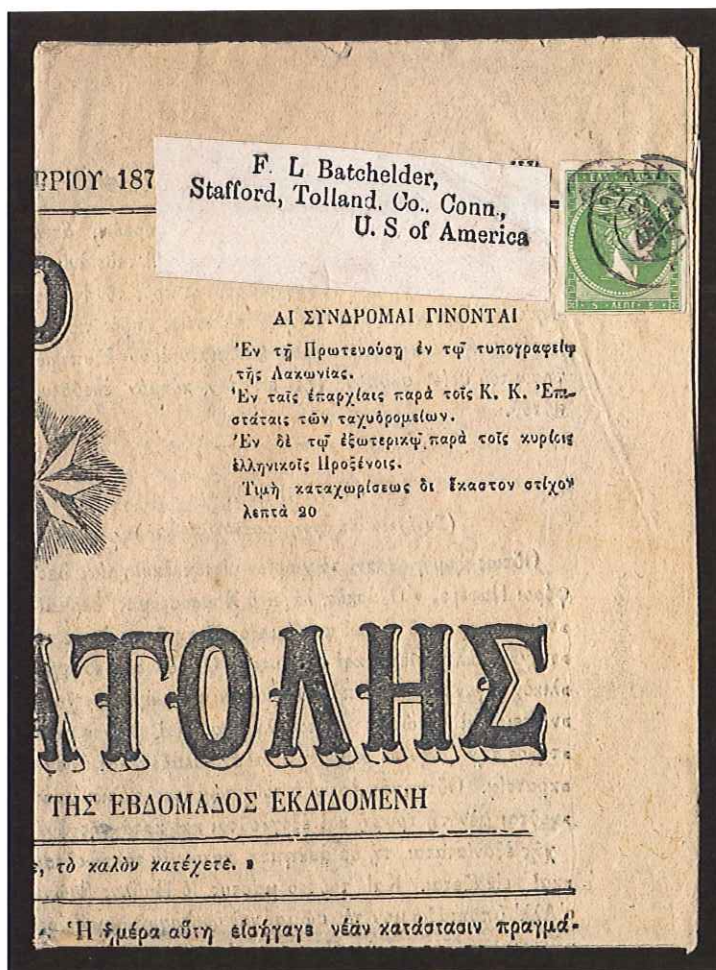
- NaI. "2" inverted (digit intact)
 NaII. "2" inverted (digit broken)
 Nb. "0" inverted
 NdI. "02" instead of "20"
 NdII. "02" instead of "20" with "0" inverted
 Ng. "2" instead of "20"
 NkI. Widely spaced control figures at back
 NkII. Widely spaced control figures with "0" inverted
 NII. "0" in shape of "keyhole"
 NIII. "0" in shape of "keyhole" and inverted
 Nm. Control figure inverted
 Nn. Control figure printed on recto and inverted (Sparta error)
 No. Double control figures

Note: No. 51a. and part of 51b. have been printed on rather whitish paper. There are several different shades of the control figures and thus a great number of combinations of the shades of recto and verso. The ultramarine No. 51f. with control figures in Prussian blue is rare. All known examples were used in Syros during June 1877.

52. 401.
 a. Grey-bistre
 b. Rose-bistre

- Nl. "0" in shape of "keyhole" and inverted.

Note: There are stamps printed on vertically laid paper.



10190

5 Lep yellow-green on white tied by Athens cds dated 27 Dec 1875 on newspaper to the USA, just nicked at a point at bottom frame line, this is probably the earliest recorded date for this stamp (Constantinides quoted 4 Jan 1876), fine for this rare item

49a

200

Rate: 5 Lepta, UPU printed matter rate



10191

5 Lep emerald-green used block of four, top pair with faults, still fine and rare, ex. Binos

49e

3'000



10192 *

10 Lep red-orange on white or on yellow, three mint examples in different shades, all v.fine

50a,50d

400



10193 *

10 Lep orange mint pair, clear to good margins, small gum stains, fresh & v. fine

50b

120



10194 ☉

10 Lep orange on yellow pair, used with "KALAVRYTA 3 APR. 80" datestamp, top stamp with variety "00" instead of "10", bottom stamp WITHOUT CONTROL FIGURES, faults and reinforced, still a UNIQUE item of remarkable philatelic significance, ex. Maximus

50dNel+Np

800



10195 ☉

10 Lep orange on yellow used pair, good to large margins, without control figures at back, centrally cancelled by Corfu cds dated 26 JUN 78.

50dNp

5'000

Very fine example of the important error and of the highest rarity, ex. Maximus (1983 realised SFr. 9'200), cert. Tseriotis



- 10196** * 20 Lep blue mint pair, clear to good margins, one with "2" at back inverted, fine and extremely rare pair showing the inverted figures error, ex. Maximus

51bNall

1'200

- 10197** * 20 Lep indigo-blue mint pair, both stamps light creased, otherwise superb and in a very rare shade as mint

51d

300

- 10198** ☉ The "ARGOSTOLION" error

51eNm

4'000

20 Lep prussian blue, showing INVERTED CONTROL FIGURES variety in deep ultramarine, clear to large margins, fine for this important error of which very few are known, ex. Binos, cert. Tseriotis (Coundouros 63.2)



- 10199** *** ☒ 20 Lep ultramarine, mint right sheet marginal BLOCK OF EIGHT, just touched to large margins all round, excellent colour, fresh crackly gum, extremely fine for this important mint multiple

51f

8'000

Only two such blocks known, being the largest known multiple, ex. Gill, Tseriotis, cert. Tseriotis

53. 11.
a. Deep brown on yellowish
b. Yellowish brown
c. Red-brown
d. Deep red-brown
e. Grey-brown
- Fa. Broken plate (pos. 44)
Fb. Broken plate (pos. 55)
54. 21.
a. Grey-bistre
b. Olive-yellow (never issued)
55. 51.
a. Emerald-green
b. Vivid green
c. Green
d. Deep green on thin paper
e. Greyish green
f. Deep to oily yellow-green on thin paper
- Vb. Double print, one inverted (never issued)
56. 101.
a. Bright orange-vermilion
b. Orange-red
c. Yellow-orange
d. Orange
e. Orange on yellow
57. 201.
a. Ultramarine
58. 401.
a. Bright violet-brown
b. Dull violet-brown
c. Light dull violet-brown





10200 ☒

1 Lep red-brown used on newspaper, v. fine

53c

100

10201 **
*
(*)
⊙ ⊞

1 Lep Selection of mint/unused & used on stockpage showing a fine array of shades, comprising mint block of four, strip of five & pair plus 6 singles, used strip of five & pair & 7 singles, total of 31 stamps, v. fine group

53shades

800

10202 **
⊞

5 Lep Yellow-green, never hinged marginal block of thirty, with variety DOUBLE PRINT, ONE INVERTED, intense & fresh colour, largest unit in existence from the only printed sheet, an outstanding exhibition item in overall excellent condition

55Vb

7'000


10203 * 田

5 Lep green, unissued mint block of six from the top right corner of the sheet, with DOUBLE PRINT (one inverted), control hs at back, unique, only one sheet printed

55Vb

1'200

10204 (*)

10 Lep orange-red, unused, large even margins, superb appearance and extremely rare

56b

3'000

10205 *

20 Lep ultramarine mint vertical pair, good margins, v. fine

57a

500
10206 *

20 Lep ultramarine mint pair, v. fine

57a

400
10207 *

20 Lep ultramarine mint, a little gum soiling, v. fine

57a

300



10208 * 田

20 Lep ultramarine, mint BLOCK OF FOUR, good to large even margins, superb and v. rare

57a

1'600



10209 ◎

40 Lep Mauve, STRIP OF TEN, used with Athens cds's, just touched in one corner, good to large margins, fine & a very scarce used multiple

58a

400

In 1882 the change of colour of the stamps for the basic inland and foreign rates (20l. & 30l.) became necessary because of the relevant U.P.U. rule.

- | | |
|--------------|--|
| 59I. | 20l. |
| a. | Carmine |
| b. | Deep carmine |
| 59II. | 20l. |
| a. | Bright rosine (aniline) |
| b. | Dull rosine (aniline) |
| Vc. | Incomplete print at the back |
| 60. | 30l. |
| a. | Grey-ultramarine |
| b. | Slate-blue |
| c. | Deep ultramarine |
| d. | Ultramarine |
| Va. | Quadrille background |
| Fa. | Broken plate (in front of the nose) |
| Fb. | Broken plate |
| Fc. | White line on the upper part
of the stamp |

*Note: Nos. 53-56, 58, 59II exist with
"SPECIMEN" overprint*





10210 *** 田

20 Lep deep carmine mint top sheet marginal block of four, clear spot on one and gum-crease on another, pos. 7-8, 17-18, pos. 17 with constant plate flaw of "white dot on the meander at lower left", v.fine and rare multiple with the plate flaw, ex. Maximus

59lb

800



10211 ◎

20 Lep bright rosine used strip of six, large to very large margins, v. fine and scarce, ex. Maximus

59lla

160



10212 *** 田

30 Lep ultramarine mint, left sheet marginal BLOCK OF SIX, small tear on one & usual gum creases, v. fine and extremely rare

60d

1'200



10213 ☉

30 Lep ultramarine, used, good to very large margins, showing 'white line at top left' (pos.1) plate flaw, fine and v. rare

60d

100



10214 ☉ 田

30 Lep ultramarine used, marginal block of fifteen, all but two with good to large margins, some faults, an important used multiple.

60d

7'000

A great showpiece of utmost rarity, ex. Maximus (1985 realised SFr.10'925)



10215

AUSTRIA: 1862 Cover from Triest to Patras (arr. 11 Aug.), franked with 1860 15Kr. and with Paris print 5 Lep, 40 Lep, First Athens 10 Lep, 1862-67 20 Lep added in Patras, some faults or imperfections, addressee's name excised, still a spectacular entire. Covers to Greece bearing the 1860 Austrian issue are of utmost rarity. Ex. Photiades, Maximus, cert. Tseriotis

3'000

Rate: Partial payment was accepted until 1867. The Greek stamps paid the usual Triest rate.



10216

AUSTRIA: 1868 Envelope from Vienna to Zante, franked 1867 5kr tied blue cds, with 2-line "AFFRANCATURA/INSUFFICIENTE" and 70 lepta in Greek postage applied on arrival, franking being 1867-69 10 Lep (folded round bottom of envelope), 20 Lep & 40 Lep, all tied Zakynthos cds, an attractive & scarce combination usage, cert. Ferchenbauer

2'200



10217



The following nine Austrian Levant covers were mailed for transport by Lloyd ship from the Austrian PO's in the Levant and were paid up to the Greek port of entry and subsequently charged with the domestic postage.

400

AUSTRIAN LEVANT (CANDIA): 1868 Cover to Syra franked Arms perf. 9 1/2 10sld and with 20 Lep applied on arrival, v. fine and scarce, ex. Maximus

10218



AUSTRIAN LEVANT (CANDIA): 1874 Cover to Syros, franked with 1867 10sld and with 10 Lep pair (both with faults) added upon arrival, fine for this

400



10219



AUSTRIAN LEVANT (DURAZZO): 1874 Folded entire, franked 1867 10sld and 20 Lep on arrival (touched), beautiful blue strike of Durazzo (rare) on 10sld

800



10220



AUSTRIAN LEVANT (GALATZ): 1866 Cover from Galatz to Corfu, franked 1864 10sld pair (affected by filling crease) and 20 Lep on arrival, v. fine and rare, cert. Tseriotis

1'000



10221



AUSTRIAN LEVANT (LARNACCA): 1872 Folded cover from the Austrian Offices in Larnacca, via the Austrian Office in Smirna to Syra, franked 1867 10s blue tied LARNACCA DI CIPRO cds, with 10 Lep pair added upon arrival and cancelled Syra cds, fine & rare

4'000



10222



AUSTRIAN LEVANT (METELINO): Disinfected entire from Metelino to Syra, franked by a spectacular 1863 2s yellow STRIP OF FIVE tied by blue METELINE/31.8 cds, with 1862-67 20 Lep blue added upon arrival and tied by Syra cds, cvr with usual Rastel punch & slits, plus some toning & cover fold affecting one 2s, a wonderful exhibition showpiece, cert. Ferchenbauer & Tseriotis

8'000



10223

AUSTRIAN LEVANT (PREVESA): 1872 Large part cover to Corfu franked with 1867 10sld and with two 1871-76 10 Lep in diff. shades (two, one touched) added at destination, a v. fine and unusually scarce franking, ex. Binos

1'000



10224

AUSTRIAN LEVANT (SCIO-CESME): 1866 Cover to Syros franked with 1864 10sld and with 1862-67 20 Lep greenish blue (19b) added upon arrival, v. fine, ex. Binos

240



10225

AUSTRIAN LEVANT (SCIO-CESME): 1872 Cover from Chios to Syros, franked 10sld and 20 Lep on arrival, fine

300



10226 △

BRAZIL: Fragment of 1866 cover bearing Brazil 430 r yellow vert. pair and 1862-67 Large Hermes Heads 1862-67 5 Lep (faults), both well tied by Athens cds, UNIQUE!

4'000

Ex. Binos



10227 ☒

ENGLAND: 1868 Cover from London to Patras franked 1d and 10 Lep + 80 Lep on arrival (latter touched at top left), v. fine

600

Rate: Via Italy



10228

ITALY: 1865 (25 Oct.) Cover from Livorno to Corfu, franked with 20c/50c and with 1862-67 10 Lep, 40 Lep and 80 Lep added upon arrival, full range of postmarks, disinfection slits, a v. fine and scarce double rate cover, cert. Tseriotis

1'200

Rate: 130 Lepta, being the double rate to/from Italy by Greek, Italian or Austrian ship



10229

MALTA: 1862 Folded cover from Malta to Piraeus, franked Great Britain 1d red & 2d blue (cnr missing), tied "A25" duplex, with 20 Lep applied on arrival, scarce, cert. Tseriotis

1'200

Rate: Paid up to the Greek port of entry and subsequently charged with domestic postage

10230 

PAPAL STATES: 1862 Folded cover from Rome to Athens, franked two pairs & two singles of the 8 baj tied diamond grid cancel, with 20 Lep applied on arrival, plus local cover franked 2 baj, attractive & scarce, cert. Tseriotis

4'000

Rate: Mail sent from Papal States by French ship and was paid up to the Greek port of entry and subsequently charged with domestic postage

10231 

PAPAL STATES: 1863 Cover from Rome to Athens, franked 7 baj pair and single plus 20 Lep added upon arrival. The sender has wrongly dated the cover 21 Feb. 1862 but the correct year is deduced from the postmarks and the recipient's notation. The 20 baj single and the Greek stamp are touched, still v. fine, cert. Tseriotis

1'400

Rate: Mail sent from Papal States by French ship and was paid up to the Greek port of entry and subsequently charged with domestic postage



10232



RUMANIA: 1869 Small neat envelope Giurgiu via Austrian Offices in Constantinople to Syra, franked 1869 50b with broken frameline error, tied GIURGIU/29.5 cds, with 20 Lep applied on arrival to pay internal postage, array of transit & arrival bs, usual cvr stains, colourful, attractive & rare

2'400

Rate: Mail sent from Rumania was paid up to the Greek port of entry and subsequently charged with domestic postage



10233



RUMANIA: 1871 Folded cover Galati via Austrian Lloyd through the Black Sea & Constantinople to Corfu, this was the winter route due to the Danube being frozen, franked six singles of 1871 10b tied "GALATI/12.NOE.71" cds, with 20 Lep applied on arrival to pay internal postage, also Rumanian boxed "PP" & Lloyd "PP" alongside, cvr crease & disinfection slits affecting stamps, attractive & rare, cert. Tseriotis

2'800

Rate: Mail sent from Rumania was paid up to the Greek port of entry and subsequently charged with domestic postage



10234



RUSSIA: 1870 Cover Taganrog to Piraeus franked 10k three singles, one with clipped perfs., and 5 Lep + 40 Lep (both with faults) applied on arrival, fine

300

Rate: French ship transport from Constantinople, each country was responsible for postage to or from Constantinople which was the place of exchange between the two postal administrations.



POSTAGE

Do you have

a Grand Prix, Large Gold Medal or Award-Winning collection?

Do you think

you will sell your collection within the next 5 years?

So if your answer to both these questions is "yes", then we invite you to phone or write to us personally to discuss the possibilities.

Taking account of the last 35 years, we have regularly offered many exceptional collections of Grand Prix and Large Gold status. We have often achieved results including world record prices that have astonished the owners. These 35 years of experience and achievements have established for us an organisation we believe second to none in the philatelic world.

A flexible yet most comprehensive range of activities permits us to relate our services to the needs and requirements of each important collection. But we also like to cater to the needs and requirements of its owner. Substantial cash advance facilities and flexible commission arrangements are part of our standard service.

Marketing - The selling of a well-known collection can always benefit from early planning, and a well defined strategy to ensure a successful result. Global promotion through the latest Internet technology is a unique feature offered by David Feldman auctions ("live" multi-city and home participation).

Preparation - Beautiful catalogues of high academic form and content, travelling, exhibitions and worldwide promotion make each auction a major philatelic event.

Satisfaction - The David Feldman Company has auctioned more Grand Prix and Large Gold Medal collections than any company in the history of philately! Ask some of those who already have sold with us. Think it over and contact us at your convenience.

David Feldman, Marcus Orsi, Anders Thorell and Gaël Caron.

David Feldman SA
PHILATELISTS • AUCTIONEERS

175, route de Chancy • P.O.Box 81
1213 Onex, Geneva • Switzerland
Tel. +41 (0)22 727 07 77 • Fax +41 (0)22 727 07 78
admin@davidfeldman.com • www.davidfeldman.com

Conditions de Vente Français

DAVID FELDMAN S.A. CONDITIONS DE VENTE

La participation dans l'une des ventes aux enchères de David Feldman SA implique une adhésion totale aux conditions décrites ci-dessous ainsi qu'aux droits et obligations qui en découlent. Ces mêmes conditions sont applicables à toute transaction en relation à des pièces ou des lots faisant partie de la vente aux enchères et conclue en dehors de celle-ci. La Maison DAVID FELDMAN S.A., organisatrice de la présente vente aux enchères, agit exclusivement comme mandataire et n'assume donc aucune responsabilité quelconque en cas de manquement(s) des acheteurs et/ou vendeurs.

1. LES LOTS SONT MIS EN VENTE

1.1 Sur la base de leur présentation dans le catalogue et/ou sur le site internet: Les lots sont décrits avec le plus grand soin sans toutefois engager la responsabilité de la Maison DAVID FELDMAN S.A. Les photographies font partie intégrante des descriptions pour ce qui est des marges, de la dentelure, du centrage, des oblitérations et de toute autre qualité apparente. La description des lots mentionne si les pièces sont signées par des experts et/ou sont accompagnées de certificats d'expertise.

1.2 Sur la base de leur examen: Tous les lots peuvent être examinés, avant et pendant la vente dans nos bureaux ou à l'endroit de la vente, aux horaires indiqués dans le catalogue de vente ou sur notre site Internet. Les acheteurs ayant examiné les lots avant la vente et/ou participant personnellement et/ou y étant représentés, sont censés avoir examiné tous les lots achetés et les accepter dans l'état où ils se trouvent lors de l'adjudication, indépendamment de la description figurant dans le catalogue.

2. LES OFFRES D'ENCHERES

2.1 Chaque offre d'enchère doit être supérieure à celle formulée précédemment selon l'échelle suivante: (la monnaie peut changer selon la vente, aux enchères)

Sfr. 50 - 100	Sfr. 5	Sfr. 2000 - 5000	Sfr. 200
Sfr. 100 - 200	Sfr. 10	Sfr. 5000 - 10000	Sfr. 500
Sfr. 200 - 500	Sfr. 20	Sfr. 10000 - 20000	Sfr. 1000
Sfr. 500 - 1000	Sfr. 50	Sfr. 20000 - 50000	Sfr. 2000
Sfr. 1000 - 2000	Sfr. 100	Sfr. 50000 - 100000	Sfr. 5000

Les offres se situant entre ces montants seront amonées à la surenchère supérieure. L'enchérisseur est lié par son offre tant qu'une nouvelle surenchère n'a pas été valablement formulée par un autre enchérisseur.

2.2 L'huissier ou le créancier a le droit d'avancer les enchères, de séparer, joindre ou retirer n'importe quel lot, cela à son entière discrétion. La vente a lieu en français mais les enchères pourront être répétées en anglais. La Maison DAVID FELDMAN S.A. est également autorisée à enchérir pour le compte de vendeurs lorsque des prix de réserve ont été fixés. Si le vendeur fixe des prix de réserve pour certains de ses lots, il sera alors considéré comme acheteur et la Maison DAVID FELDMAN S.A. enchérira pour le compte de celui-ci jusqu'à concurrence des prix de réserve fixés. Lorsque le prix fixé par le vendeur n'est pas atteint, il sera passé à la criée du lot suivant par un simple coup de marteau.

2.3 Les offres d'enchères écrites reçues par David Feldman SA ou sur le site Internet avant la vente, sont dans tous les cas prioritaires sur les offres d'enchères faites dans la salle de vente. L'enchérisseur donnant un ordre d'enchères écrit peut faire des offres alternatives et/ou limiter le montant global de ses offres. Les offres d'enchères données "à acheter" sont considérées comme pouvant atteindre jusqu'à 10 fois la valeur de l'estimation imprimée dans le catalogue. Les enchères doivent être faites en francs suisses. Les offres d'enchères libellées en d'autres monnaies seront converties en francs suisses au cours du jour de leur réception par la Maison DAVID FELDMAN S.A. Toute offre écrite d'enchères est considérée comme liant son auteur pendant 60 jours après la date de la vente aux enchères. La Maison DAVID FELDMAN S.A. est donc en droit de facturer la marchandise à l'enchérisseur jusqu'à l'expiration de ce délai. Toute facture reçue par celui-ci est de ce fait valable et doit être payée immédiatement.

3. LA VENTE AUX ENCHERES

3.1 La vente en direct se déroule sous le contrôle de l'autorité compétente qui n'assume cependant aucune responsabilité. La vente aux enchères se déroule sous le ministère d'un "huissier judiciaire" de la République et Canton de Genève.

3.2 Prerogatives de David Feldman S.A.: La Maison DAVID FELDMAN S.A. est en droit selon sa libre appréciation de retirer, de diviser ou de grouper les lots faisant partie de la présente vente ainsi que de refuser l'adjudication de n'importe lequel desdits lots. La Maison DAVID FELDMAN S.A. se réserve le droit de refuser selon sa libre appréciation toute offre d'enchères et/ou l'entrée de la salle de vente à n'importe quelle personne quelle qu'elle soit. La Maison DAVID FELDMAN S.A. n'assume aucune responsabilité quelconque en cas de dommage corporel survenu sur les lieux de la vente.

3.3 Représentants et Agents de Vente aux Enchères: L'enchérisseur qui agit pour le compte d'un tiers engage son entière responsabilité personnelle en particulier en ce qui concerne toutes les obligations contractées dans le cadre de la présente vente. Cette responsabilité s'étend notamment à la vérification de la qualité des lots achetés ainsi qu'au règlement ultérieur de la facture des lots acquis.

3.4 L'adjudication: Chaque lot est adjugé au plus offrant pour le compte de son vendeur respectif. Des frais de 18.5% sont facturés en sus du prix d'adjudication par David Feldman SA couvrant la commission, les taxes d'adjudication, frais par lot, assurance, emballage, frais de port, frais d'exportation etc. et ceci dans tous les cas, tous frais encourus ou pas. A la tombée du marteau, les profits et risques des lots ainsi adjugés passent à l'enchérisseur dont l'offre a été acceptée. La marchandise ne sera cependant remise à l'acquéreur qu'au moment du règlement intégral du prix d'achat (prix d'adjudication plus les frais).

Exceptionnellement, pour les lots marqués d'un "H" à la fin de la description, ceux-ci sont particulièrement lourds et les frais de port sont facturés en sus et à prix courant. Les acheteurs donnant des instructions particulières au sujet de l'expédition de leurs lots sont responsables pour leurs frais de port.

TVA (Taxe à la vente) - Note indicative concernant les ventes aux enchères dont les lots se trouvent en Suisse:

Les acheteurs domiciliés à l'étranger ne sont pas soumis à cette taxe, à condition que les marchandises soient exportées hors de Suisse. DAVID FELDMAN S.A. se fera un plaisir de s'occuper de l'exportation de ces marchandises. Les clients peuvent aussi faire cette exportation par leurs propres moyens; dans ce cas, ils doivent fournir à DAVID FELDMAN S.A. une attestation d'importation signée et timbrée par les douanes suisses. Toute acquisition par des acheteurs désirant garder la marchandise en Suisse est soumise à la taxe TVA de 7.6% sur le prix d'achat.

3.5 Paiement: Les adjudicataires présents sont tenus de payer comptant en francs suisses le prix d'achat et la commission contre remise de la marchandise acquise. Le paiement en monnaies étrangères est accepté au cours du jour tel qu'établi par une des grandes banques suisses. Les enchérisseurs par correspondance auxquels un lot est adjugé ainsi que les adjudicataires présents auxquels la Maison DAVID FELDMAN S.A. accorde l'autorisation d'acquiescer les montants dus après la vente, sont tenus de payer le prix d'achat et la commission due à réception de la facture de la vente aux enchères. Dans ce cas, la Maison DAVID FELDMAN S.A. conserve les lots adjugés qui ne seront remis à leurs acheteurs qu'à réception par la Maison DAVID FELDMAN S.A. du paiement intégral des montants dus. Sauf instructions spéciales de l'acheteur, l'envoi des lots s'effectue par la poste, dans tous les cas à ses frais; la Maison DAVID FELDMAN S.A. assure, de manière usuelle, la marchandise pour le transit, les frais d'assurance étant également à la charge de l'acheteur. Les lots, délivrés ou non, conservent titre de propriété de la Maison DAVID FELDMAN S.A. pour le compte du vendeur jusqu'au paiement intégral de la facture.

3.6 Facilités de paiement: La Maison DAVID FELDMAN S.A. accorde, selon sa libre appréciation, des facilités de paiement aux acheteurs. L'acheteur au bénéfice de telles facilités paie un montant minimum de 25% du montant total de la facture dès réception de celle-ci puis acquitte le solde encore dû en mensualités égales sur une période de 6 mois maximum. Un intérêt mensuel plus les frais encourus au taux de 1% sont perçus, à partir de la date de la vente, par la Maison DAVID FELDMAN S.A. L'intérêt est déduit chaque mois au compte du client. En cas d'octroi de facilités de paiement, la Maison DAVID FELDMAN S.A. garde les lots adjugés jusqu'au paiement intégral des montants dus par l'acheteur, étant précisé que l'acheteur peut, en tout temps avant livraison, examiner la marchandise acquise auprès de la Maison DAVID FELDMAN S.A. Par ailleurs, l'acheteur perd tout droit de réclamation tel que prévu sous chapitre 4 ci-dessous, 30 jours après la date de la vente aux enchères.

3.7 Droit de gage: Jusqu'au paiement intégral du montant dû, l'acheteur confère à DAVID FELDMAN S.A. un droit de gage sur la totalité des lots gardés par DAVID FELDMAN S.A. acquis avant, pendant et/ou après la présente vente aux enchères. Ce gage garantit le remboursement de tout montant dû en capital, intérêts, commissions et frais éventuels. DAVID FELDMAN S.A. est autorisée, mais non obligée, à réaliser les gages sans autres formalités et sans préavis si l'acquéreur est en demeure pour le paiement de sa dette ou l'exécution d'une obligation quelconque. DAVID FELDMAN S.A. pourra dans tous les cas réaliser les gages de gré à gré. A cet effet, elle n'est pas tenue d'observer les formalités prévues par la Loi fédérale sur la poursuite pour dette et faillite; DAVID FELDMAN S.A. est libre en outre d'introduire ou de continuer une poursuite ordinaire, sans avoir préalablement réalisé les gages et sans renoncer pour autant à ceux-ci.

4. GARANTIE

4.1 Etendue de la garantie: Sous réserve de l'article 4.3 ci-après, l'authenticité de toutes les pièces philatéliques vendues aux enchères est garantie pendant 30 jours à compter de la date de la vente aux enchères. Toute garantie de défaut ou autre garantie de quelque nature qu'elle soit est expressément exclue. Toute réclamation concernant l'authenticité doit être transmise à DAVID FELDMAN S.A. dès réception des lots, mais au plus tard dans les 30 jours à compter de la date de la vente aux enchères. Avant la livraison, qui peut intervenir après ce délai de 30 jours, les pièces philatéliques acquises peuvent être examinées auprès de DAVID FELDMAN S.A. L'acheteur dont la réclamation parvient à DAVID FELDMAN S.A. après ce délai de 30 jours à compter de la date de la vente aux enchères perd tout droit à la garantie. Sa réclamation ne sera pas prise en considération par DAVID FELDMAN S.A. Si un délai supplémentaire pour formuler une réclamation liée à l'authenticité d'une pièce philatélique s'avère nécessaire, la demande doit en être faite à DAVID FELDMAN S.A. dans le délai de 30 jours à compter de la date de la vente aux enchères. Aucune demande parvenue après ce délai de 30 jours à DAVID FELDMAN S.A. ne sera prise en considération. Les résultats de l'expertise pour laquelle un délai a été accordé doivent parvenir à DAVID FELDMAN S.A. dans les trois mois à compter de la date de la vente aux enchères. Un délai supplémentaire ne peut être accordé qu'avec l'accord écrit de DAVID FELDMAN S.A. Seules les réclamations, résultats d'expertise ou autres notifications parvenus dans les délais seront pris en considération par DAVID FELDMAN S.A.

4.2 Expertise ou contre-expertise: Lorsque l'authenticité d'un lot est contestée l'acheteur est tenu de produire un certificat d'expertise ou de contre-expertise émanant d'un expert qualifié justifiant sa réclamation. Si l'expert reconnu, assumant toute responsabilité en cas d'erreur, juge que le timbre a été falsifié, il peut le marquer en conséquence; les signes "FAUX" ou "FALSIFIE" ne constituent pas alors une altération du lot. En présence d'une telle réclamation la Maison DAVID FELDMAN S.A. se réserve le droit de demander selon la libre appréciation une ou plusieurs expertises subséquentes dont les frais seront mis à charge du vendeur dans l'hypothèse où la réclamation de l'acheteur est fondée. Dans le cas contraire l'acheteur supportera tous les frais d'expertise encourus. Lorsque la réclamation est fondée, le lot est repris et le prix d'adjudication ainsi que la commission sont intégralement remboursés à l'acheteur. Dans le cas d'un paiement retardé dû à une expertise agréée par David Feldman S.A., des intérêts sont payables à 50% du taux habituel pour tout lot dont l'authenticité est confirmée. Si David Feldman S.A. n'est pas d'accord tous les intérêts seront dus.

4.3 Limites de la garantie: Les lots décrits comme collections, sélections ou groupes, ceux formés de doubles et d'accumulations, ne peuvent faire l'objet d'une réclamation quelconque. Les réclamations concernant les lots décrits comme série ou groupes de séries contenant plus d'un timbre, ne sont prises en considération dans les limites de l'article 4.1 ci-dessus que si elles portent sur plus d'un tiers de la valeur totale d'acquisition du lot.

4.4 Paiement tardif: Si le paiement du prix d'achat et de la commission due par l'acheteur n'intervient pas dans les 30 jours à compter de la date de la vente aux enchères, la Maison DAVID FELDMAN S.A. se réserve le droit d'annuler la vente et de disposer d'un/des lot(s) concerné(s) et/ou d'agir par toute voie de droit utile contre l'acquéreur afin d'obtenir le paiement des montants dus et/ou d'éventuels dommages-intérêts/ou le remboursement de tous frais judiciaires. Des frais pour les paiements en souffrance d'au moins 5% dès le premier mois et 2% par mois supplémentaire. De plus, les dépenses encourues seront perçues sur toutes les sommes dues par l'acheteur 30 jours après la date de la vente aux enchères. Le débiteur défaillant perd en outre tout droit de réclamation.

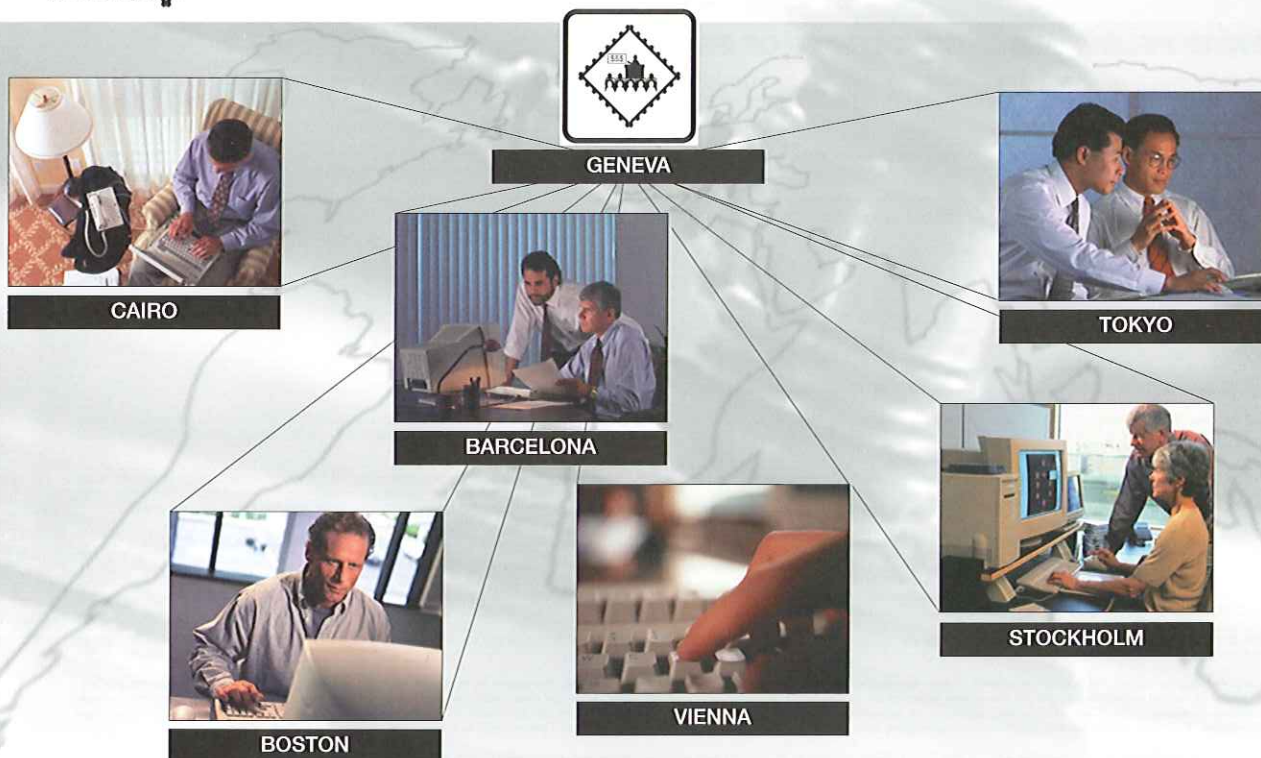
5. DROIT APPLICABLE ET FOR COMPETENT

La présente vente aux enchères ainsi que tous les rapports juridiques qui en découlent seront soumis au Droit suisse exclusivement. Toute action légale ou procédure concernant la vente aux enchères ainsi que les rapports juridiques qui en découlent seront soumis à la juridiction exclusive des tribunaux de Genève, sous réserve d'appel au Tribunal fédéral suisse à Lausanne. Dans tous les cas, la Maison DAVID FELDMAN S.A. se réserve le droit de poursuivre tout acheteur défaillant à son lieu de résidence, auquel cas le Droit Suisse reste applicable.

6. Toute transaction: Ces conditions sont applicables à toute transaction même en dehors des ventes aux enchères, avec David Feldman SA.



David Feldman the only **live multi-location** auction



Participate at home **"LIVE"**

a client said

"I've been buying stamps and covers from auctions and dealers over 30 years and have now decided to sell my collection. My collection is international in nature with possible buyers everywhere. I was wondering how to go about making the best decision. I was particularly concerned where it should sell and with whom. My participation in your last auction by Internet assures me that the David Feldman company must be the right choice..."

David Feldman is still the only philatelic company in the world that presents its clients with the opportunity to bid "live" at its auctions by a simple click on the Internet.

Log in at **www.davidfeldman.com** and practice our simulation system to prepare yourself for online bidding in our next auction series.

Sellers can also follow the journey and result of their consignment and join in the excitement of participating in the sale of their property lot by lot as the auction hammer adjudicates each item.



Conditions of Sale English

DAVID FELDMAN S.A. CONDITIONS OF SALE

Participation in any David Feldman S.A. auction means acceptance in full of the following conditions as well as any rights and obligations arising therefrom. These same conditions also apply to all transactions in auction lots taking place outside the realm of the auctions. DAVID FELDMAN S.A., organiser of the auctions, acts as an agent only and is not liable in any way whatsoever for any default(s) of purchaser(s) and/or vendor(s).

1. THE AUCTION LOTS ARE OFFERED

1.1 As presented in the relative auction catalogue and/or through the David Feldman S.A. website: Lots are meticulously described and with the greatest care, however without responsibility. Photographs count as part of the description with regard to the margins, perforation, centering, postmarks and all other visible attributes. The description of the lots mentions if the items are signed by recognised experts and/or accompanied by expert certificates.

1.2 As viewed in person: Before and during auction sales, all lots may be examined at our offices or at the auction location as scheduled in the auction catalogue and on the website. Persons or their agents attending a Live Room auction and/or who have viewed lots before any auction are understood to have examined all lots which they purchase and accept them as they are at the moment of the knocking-down and not necessarily as described.

2. AUCTION BIDS

2.1 The auction bidding steps for all auctions are as follows: (some auctions may be in other currencies than Swiss Francs)

SFr. 50 - 100	SFr. 5	SFr. 2000 - 5000	SFr. 200
SFr. 100 - 200	SFr. 10	SFr. 5000 - 10000	SFr. 500
SFr. 200 - 500	SFr. 20	SFr. 10000 - 20000	SFr. 1000
SFr. 500 - 1000	SFr. 50	SFr. 20000 - 50000	SFr. 2000
SFr. 1000 - 2000	SFr. 100	SFr. 50000 - 100000	SFr. 5000

Bids in between these steps will be adjusted accordingly to the next highest bid step. The bidder is bound by his offer until a higher bid has been validly accepted.

2.2 The Huissier Judiciaire together with DAVID FELDMAN S.A. have full discretion to refuse any bidding, to divide any lot or lots, to combine any two or more lots and to withdraw any lot or lots from the sale without any case giving any reason. DAVID FELDMAN S.A. may also bid on behalf of vendors in cases where reserve prices have been fixed. In these cases, the vendor is treated as a buyer and the auctioneer shall bid on his behalf up to reserve prices. If the reserve price fixed by the vendor is not reached the auctioneer passes to the next lot by a simple knock of the hammer.

2.3 Bid orders received by DAVID FELDMAN S.A. or on its website before the relative auctions have priority over room bids in the case of Live Room auctions. Clients giving bidding instructions to DAVID FELDMAN S.A. may make alternative offers and/or limit the total of their expenditure in advance. Bids marked "BUY" are considered as up to ten times the quoted estimate price where such exists. Bids made in other currencies than the advertised currency of the auction, will be converted into that currency at the market rate of the day of receipt by DAVID FELDMAN S.A. Bids are standing and hold good for at least 60 days from the auction period. DAVID FELDMAN S.A. reserves the right to invoice bidders up to the end of the 60 day period, payment being due immediately.

3. THE AUCTION

3.1 Live Room auctions are held under the control of the relative supervising authority at its location. The relative supervising authority has no liability. The auction will be held under the ministry of a "huissier judiciaire" of the Canton and Republic of Geneva.

3.2 Prerogatives of David Feldman S.A.: DAVID FELDMAN S.A. may withdraw, group differently, divide or refuse to knock down any lot. DAVID FELDMAN S.A. reserves the right to refuse any bid orders and/or for Live Room auctions, refuse admittance to the auction room, at its discretion, to anybody whosever. DAVID FELDMAN S.A. cannot be held responsible for any physical accident that may occur on the premises where auctions take place.

3.3 Bidders' representatives and auction agents: Any person bidding for the account of a third party is fully liable for any obligation arising from such bidding. This responsibility is notably applicable for the verification of the condition and for the payment of bought lots.

3.4 Adjudication: Each lot is sold on behalf of the respective owner to the highest bidder who becomes the buyer at the next highest bid step, which is the adjudication price. In addition to the adjudication price, the buyer pays an all-in fee of 18.5% to cover commission, charges and expenses including lotting fees, adjudication taxes, insurance, packing, mailing, export formalities etc. whether all incurred in particular cases or not. On the adjudication, liability for the lots passes to the bidder whose bids have been accepted. The lots are delivered to the buyer when the sale price (adjudication price plus all fees) have been paid in full.

Exceptionally lots marked "H" at the end of the description are heavy in weight and mailing expenses, charged at cost, are extra. Buyers who give special mailing instructions are responsible for their own mailing costs.

TVA (Sales Tax) - Notes for guidance concerning auctions for which the lots are located in Switzerland:

Buyers domiciled abroad are not liable for this tax once the goods are duly exported from Switzerland. DAVID FELDMAN S.A. are pleased to arrange this export, alternatively, clients may make their own arrangements and furnish DAVID FELDMAN S.A. with proof of export, stamped by Swiss customs. Any purchases by buyers who wish to keep their purchases in Switzerland will be liable to TVA at 7.6% of the purchase price.

3.5 Payment: Sale price plus commission are due for immediate payment as invoiced against delivery of the lots. Payment in foreign currencies is accepted at the rates of exchange of the day as quoted by a Swiss major bank. The bidders who are successful with whom it has been expressly agreed that they pay after the sale under special conditions, are due to pay the sale price and the commission according to those terms. In these cases, DAVID FELDMAN S.A. keeps the adjudicated lots which are delivered to the buyers on full settlement of their account. Delivery of the purchased lots by post or any other means if instructed by the buyer including cost of normal transit insurance cover is at the expense of the buyer. Title or ownership of the purchased lots, delivered or not, remains with the auctioneer on behalf of the seller until payment has been made in full.

3.6 Special extended payment facility: DAVID FELDMAN S.A. may offer a special extended payment facility for buyers. In these cases, the buyer may choose to pay a minimum of 25% of the total invoice immediately, and the balance over a maximum period of 6 months, paying an equal instalment at the end of each month. Interest plus charges of 1% is debited to the buyer's account at the end of each month from the auction date. When the special extended payment facility has been granted, the buyer understands that any claims regarding his purchases must be made within 30 days of the auction sale date, even though the lots may be held by DAVID FELDMAN S.A. awaiting full settlement of the account. Until delivery, all lots may be examined by their respective buyers at the offices of DAVID FELDMAN S.A.

3.7 Pledge: Until full settlement of the account, the buyer grants to DAVID FELDMAN S.A. a pledge on any and all properties held by DAVID FELDMAN S.A., acquired prior to, during and/or after any auction. This pledge secures the repayment of any amount due in principle, interests, commissions, costs and other possible fees. DAVID FELDMAN S.A. is entitled, but not obliged, to realise freely the pledge assets without further formalities and without previous notice if the buyer is in default with the payment of his debts or with the fulfilment of any other obligation hereunder. For this purpose, DAVID FELDMAN S.A. is not bound to comply with the formalities of the Federal Law dealing with actions for debt and bankruptcy proceedings, in addition, DAVID FELDMAN S.A. may choose to institute or go on with the usual proceedings without having beforehand sold the pledged goods and without having moreover given them up.

4. GUARANTEE

4.1 Extent of the guarantee: Subject to paragraph 4.3 below, the authenticity of all philatelic items sold in the auction is guaranteed for a period of 30 days from the auction date, with the express exclusion of any other fault(s). Any reclamation regarding authenticity must come to the notice of DAVID FELDMAN S.A. on the delivery of the lots but at the latest within 30 days from that date. Before delivery, which may take place after the 30 days period, the lots purchased may be examined at the Geneva offices of DAVID FELDMAN S.A. The buyer whose reclamation is made after 30 days from the auction date loses all rights to the guarantee. Such reclamation will not be valid by DAVID FELDMAN S.A. If an extension of the period is required in order to substantiate the claim with an expertise, a request for such extension must be made to DAVID FELDMAN S.A. within 30 days of the auction date. No request for extension will be considered beyond this 30 days period. The results of the expertise for which an extension was agreed must come to the notice of DAVID FELDMAN S.A. within 3 months of the auction date. No further extension of the period will be considered without the express agreement in writing of DAVID FELDMAN S.A. Only claims, expertise results or other details which are made within the agreed periods will be valid.

4.2 Expertise and counter-expertise: Should the authenticity of a lot be questioned, the buyer is obliged to provide an expertise or counter-expertise from a prominent expert in the field, justifying the claim. If a stamp is found by a recognised expert taking financial responsibility for errors to have been forged, he may mark it accordingly. Consequently, the marking "FALSCH" (forged) is not considered an alteration. In the case of such reclamation, DAVID FELDMAN S.A. reserves the right to request, at its own discretion, one or more further expertises. All expertise and relative charges accrue to the vendor's account in the case of a justified claim, or to the buyer's account if the claim is not justified. In the case of a justified claim, the lot is taken back and the adjudication price plus the commission are refunded to the buyer. In the case of delayed payment due to expertise agreed by David Feldman S.A., interest is charged at 50% the standard rate for all cleared lots. If David Feldman S.A. has not agreed then full interest is due.

4.3 Exclusions: Lots described as collections, accumulations, selections, groups and those containing duplicates, cannot be the subject of any claim. Claims concerning lots described as a set or groups of sets containing more than one stamp, can only be considered under the terms of paragraph 4.1 above if they relate to more than one third of the total value of the lot.

4.4 Late Payment: If the payment of the adjudicated price plus commission due by the buyer is not made within 30 days of the date of the auction, DAVID FELDMAN S.A. reserves the right to cancel the sale and dispose of the lot(s) elsewhere and/or to make a recourse to any legal proceedings in order to obtain payment of the amounts due as well as for any incurred damages and losses and any legal expenses. A charge on overdue payment of at least 5% for the first month and 2% per month afterwards plus expenses incurred is chargeable on any outstanding amount after 30 days of the date of the auction. The buyer who is in default in any way whatsoever has no right of claim under any circumstances.

5. APPLICABLE LAW AND JURISDICTION

Unless otherwise stated, all auctions as well as any rights and obligations arising from them shall be governed exclusively by Swiss law. Any legal action or proceeding with respect to the auctions shall be submitted to the exclusive jurisdiction of the courts of Geneva, subject to appeal to the Swiss Federal Court in Lausanne. In every case, DAVID FELDMAN S.A. shall also be entitled, at its discretion, to sue any buyer in default at his place of residence; in such case, Swiss law shall remain applicable.

6. All Transactions: These conditions apply to all transactions of every kind including those outside the auctions, with David Feldman SA.