



## David Feldman SA Auction

Official sponsors of the F.I.P



**Earls Court, London - May 26-27, 2000**

The Millennium Auction The Westminster Room

### Auction Programme

<b>Friday, May 26</b>			Cat. No.
10.30h	Great Britain and British Commonwealth	10000-10481	1
	Great Britain - Hong Kong		
13.30h	India - Victoria, plus Collections	10482-10938	1
16.00h	Europe with Scandinavia, Montenegro, Serbia, France & Colonies, plus Collections	10939-11209	1
<b>Saturday, May 27</b>			
10.30h	Egypt	11210-11552	1
13.00h	All World with Americas and Far East, plus Collections	11552-11772	1
14.30h	The 'Primrose' Stamp Box Collection, etc.	20000-20517	2

### Viewing Arrangements

May 1 - 12 .....	GENEVA offices 175, route de Chancy by appointment
May 20 - 25 .....	EARLS COURT Westminster Room David Feldman Stand R30

Back cover: 20132, 20325, 20074

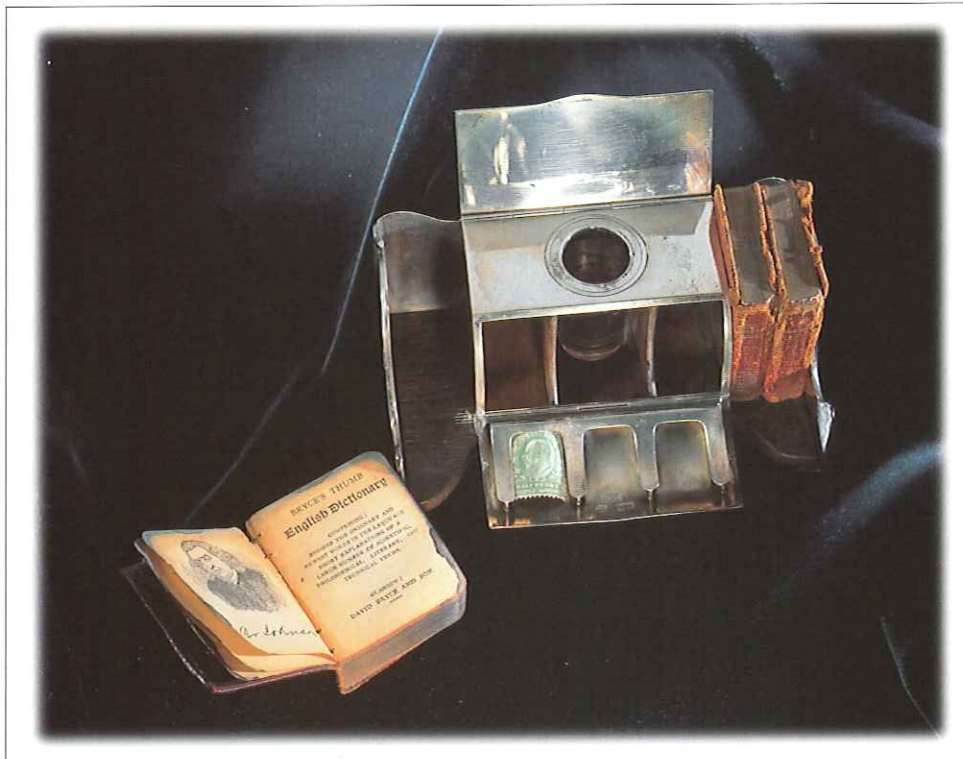
#### VAT

A special leaflet is enclosed, detailing the VAT regulations concerning this auction.

**David Feldman SA**

PHILATELISTS • AUCTIONEERS

175, route de Chancy • P.O.Box 81 • 1213 Onex, Geneva • Switzerland • Tel. +41 (0)22 727 07 77 • Fax +41 (0)22 727 07 78 • admin@davidfeldman.com





## *Introduction by Brian Beet*

*The "Primrose" collection is by far the largest and the most comprehensive ever to have come to market. It is the product of almost a quarter of a century's diligent collecting around the world by a dedicated and informed husband and wife team.*

*There is particular strength in early boxes with what must be the earliest dateable stamp box recorded to date and in novelty forms, with several – the sledge and the postal cart for instance – being the only examples of their form so far recorded. The two most outstanding areas, however, are combination desk pieces and Russian boxes.*

*Such strengths always reveal an individual collector's particular enthusiasm and within the category of combination desk pieces the number incorporating clocks or watches almost all in working order, is truly remarkable. The reader might easily form the impression from this catalogue that they are relatively common – which they most certainly are not. Rather, it would seem that virtually every example, which has appeared on the market, has found its way into this collection.*

*The Russian section is undoubtedly the highlight of the collection. The quality and the range of materials and decorative techniques would be impossible to replicate. This group is visually stunning and their superb craftsmanship makes them a joy to handle as well.*

*It has not been an easy task to place estimate prices on most of the items due to the lack of comparable sales in recent times and simply due to ever growing scarcity of most stamp boxes and collateral material.*

*As can be noted from the creative classification in this catalogue foreign country items were particularly sought and except from the usual markets, rarely found. Consideration was given to this factor also in the pricing.*

*There is also plenty of modest material, so every collector or interested person, no matter how novice or sophisticated, will find plenty for him or her within this magnificent array. It will probably be a long time before any remotely comparable offering will come on the market, if ever.*

**Technical notes:** *Dimensions given are the longest unless otherwise stated. The word 'case' is used when the piece was intended to be carried on the person and 'box' when intended to sit on the desk. Dimensions of cases do not include suspension rings unless otherwise stated.*

**Brian Beet** has been an antique dealer for twenty years specialising in silver. He is a past chairman of the Silver Society and has published several research papers in its journal. In 1994 he published a book on stamp boxes which remains the standard work on the subject (indeed it remains the only work on the subject).



# Index

List of Countries	Lots	Notes
-------------------	------	-------

United Kingdom :		
Enamel	20000-20001	
Gold & Gold Plated	20002-20007	
Silver & Silver Plated	20008-20165	
Envelopes	20166-20200	
Others	20201-20234	
USA	20235-20281	
France	20282-20232	
Russia	20323-20333	
Italy	20334-20338	
Germany, Austria and		
Netherlands	20339-20352	
Scandinavia	20353-20354	
Switzerland	20355-20359	
Ireland	20360-20362	
Portugal	20363-20364	
South America	20377	
Africa	20378-20379	
Japan	20380-20394	
China	20395-20405	
Thailand	20406-20408	
Stamp Dampers	20412-20420	
Postal Balances & Scales	20421-20435	
Pens & Writing Equipment	20436-20454	
Inkwells	20455-20460	
Postal Memorabilia	20461-20468	



## Acknowledgements

We would like to thank the following for their hard work and devotion to make this catalogue a reality:  
Maurice Aeschmann, Leigh Merchant, Pierre-Alain Simon,  
Nghia Tran, Fabio Zeppetella and Joël Feldman.



### Stamp Boxes etc.

**UNITED KINGDOM**

## ENAMEL

**20000**

7 Gold bracelet charm modelled as a postcard, the face enamelled as a stationery card with a British Edwardian stamp and engraved to "Dear Edith", reverse engraved with dedication and date "27/9/05", 2cm, very fine and rare

**100 - 200**

## 20001

7 Gold bracelet charm modelled as an envelope, the face enamelled in white with purple stamp and a Sussex address in black, back engraved with flaps, 9 ct, London 1898, 2.2cm, very fine and rare

**100 - 150**

## GOLD AND GOLD-PLATED



20002

Single envelope-type case, engraved with scrolling foliage, AE Jones, Chester  
1920, 2.6cm, minor dents

**300 - 400**



20003

Single envelope-type case, the front with frame for a photograph, AE Jones, Chester 1903, 2.6cm, fine and rare

**350 - 450**

<b>20004</b>	7	Single envelope-type case, engraved with floral sprays, AE Jones, Chester 1923, 2.6cm, very fine	<b>200 - 300</b>
<b>20005</b>	7	Four compartment case, the covers separately hinged containing a central leaf with two clips either side, outer surfaces embossed with scrolling foliage and a shield shaped cartouche, gold plated copper, 4.8cm, very minor dents, plating excellent	<b>300 - 400</b>
<b>20006</b>	7	A very similar box but the covers embossed with leaf and flower borders on a reeded ground, very fine	<b>300 - 400</b>
<b>20007</b>	7	Single envelope-type case, engraved with scrolling foliage, the top doubly hinged to form and locket containing a photograph, AE Jones, Chester c1915 (date letter worn), battered and split in several places, but rare	<b>200 - 300</b>

## SILVER AND SILVER-PLATED



<b>20008</b>		Silver-gilt letter opener, the handle fitted with a stamp compartment with a hinged lid embossed with flutes and foliage and set with a ball final, the handle embossed with a sea front view of Torquay and "JAMES BRAHAM & STRAND, TORQUAY", Taylor & Perry, Birmingham 1840, 23cm long, some distress to end of blade, otherwise fine and extremely rare	<b>1'500 - 2'000</b>
		The date letter was changed in Birmingham during July of each year, so this piece was made between July 1840 and July 1841. It would appear to be the earliest datable stamp box so far recorded.	
<b>20009</b>	7	Silver-plated seal with stamp box in the handle, the lid later set with an enamelled 3d red of 1862-73, 3.7cm, although it is difficult to say when the enamelled stamp was fixed to the lid, the combination of stamp box and seal is rare (if produced in the postage period of the stamps, it would be the earliest known)	<b>400 - 500</b>
<b>20010</b>	7	Single case with inner sleeve which swivels out on a pivot at the base, design registration mark for 28th January 1880, Joseph Hayes Taylor, Birmingham 1879-80, 3.2cm, fine and very rare, one of the earliest silver stamp cases	<b>300 - 400</b>
<b>20011</b>	7	1885 Square box, dished and gilded interior, sides and top profused embossed including a 'stamp' to hinged lid engraved "RW 9th April 1886", William Luechars, London & Paris 1885, 4.5cm, very fine and rare so early	<b>400 - 500</b>
<b>20012</b>	7	Allen's combined letter scales/stamp case, registered design no. 112080 of 1888, with shaped outline, James Allen, Birmingham 1888, 3.6cm, very fine, very rare in silver	<b>500 - 600</b>
<b>20013</b>	7	Flat rectangular case, gadrooned front with aperture to extract stamp, suspension chain, Lawrence Emanuel, Birmingham 1890, 3.7cm, very fine and scarce	<b>150 - 200</b>

The dimensions would suggest this case was intended for receipt stamps



20000



20001



20004



20005



20006



20007



20009



20010



20011



20012



20013



20016





20014

A small inkwell modelled as a LANTERN with red glass lamp, the lid constructed as a stamp box with separate lid inside, Samuel Jacob, London 1894, 7cm high (including handle), very fine and rare

**500 - 600**



20015

The Golf Club: Novelty box modelled as a golf club, the 'head' a match box, striker on outside, with stamp compartment inside lid, gilt interior, the handle hollow with pull off cap, probably for sealing wax, Samuel Jacob, London 1895, 29cm, cap at end of handle stuck, very fine and extremely rare

**1'500 - 2'000**

20016	7	Pocket case finely engraved with trailing foliage, the leather lined interior with various compartments including three for stamps and a silver propelling pencil, Deakin & Francis, Birmingham 1895, 10.5cm, superb	250 - 350
20017		Three compartment trough form box on ball feet, windows in hinged lid filled with Victorian stamps, Grey & Co., Birmingham 1895, 8.2cm, one foot missing otherwise fine	100 - 200
20018	12	Novelty two compartment box modelled as a CRADLE with the British royal arms embossed on the ends, made to commemorate the birth of Queen Victoria's first great grandchild, Saunders & Shepherd, Birmingham 1896, 5.5cm, fine and rare	400 - 600
20019	12	Pocket case with leather lining providing various compartments including three for stamps, covers embossed with five cherubs among clouds in a foliate border, William Comyns, London 1896, 10cm, very fine	250 - 350
20020	12	Combined coin, note and stamp case, three sprung dispensers for coins in base, clips for notes and for stamps in the lid, sprung hinge, Deakin & Francis, Birmingham 1896, 7cm, marks very worn	100 - 200
20021	12	Rectangular box, lid embossed with birds in foliage, sides with Rococo decoration, inscribed 'Lilian', wood interior with dished base and no division (so possibly not intended for stamps), William Comyns, London 1896, 10cm, slight wear to top	100 - 200

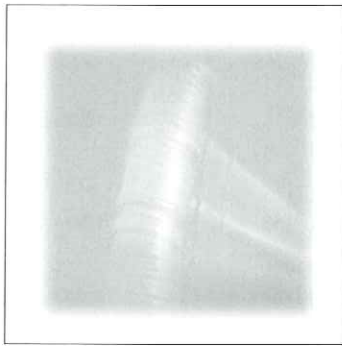


20022		A large and impressive inkstand with three compartment stamp box at centre with hinged lid and gilded, sloped interior with divisions, the whole standing on cast voluté feet, shaped gadroon border, pierced gallery, two silver-mounted inkwells in conforming galleries, pen tray at front, Gibson & Langman (Goldsmith & Silversmith Co.) London 1897, 28cm wide, superb	1'000 - 2'000
20023	12	Single compartment case with spring release lid and sprung dispenser inside, gilt and engraved with flowers, outside with dense foliate engraving, Henry Williamson, Birmingham 1897, 4.7cm (including suspension ring), very fine and scarce	200 - 300
20024	12	A holder for bills or tickets with three compartments for stamps, marked "(PROV) PATENT" and "GEORGE MAURICE & CO., 48 PICCADILLY" (the retailers), William & George Neal, London 1897, 6.9cm, fine and rare	150 - 250
20025	12	Single compartment box with gadroon base and sloping, hinged lid fitted with window displaying a Victorian stamp, Grey & Co., Birmingham 1897	100 - 200
20026	12	Two compartment box of trough form on scroll feet, glazed windows, Levi & Salaman, Birmingham 1897, 6cm, very fine	150 - 200
20027	12	Circular three compartment box standing on three scroll feet, scroll supports around central finral, each compartment has a hinged, sprung lid with a window, Grey & Co., London 1898, 7.3cm high, fine and very scarce	500 - 700

[illegible]



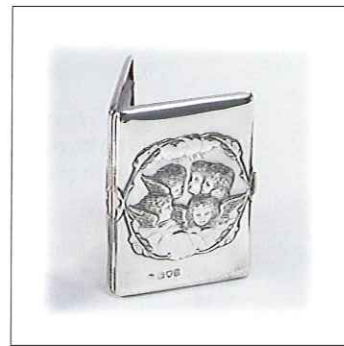




**DFSA**



**20018**



**20019**



**20020**



**20021**



**20023**



**20024**



**20025**



**20026**



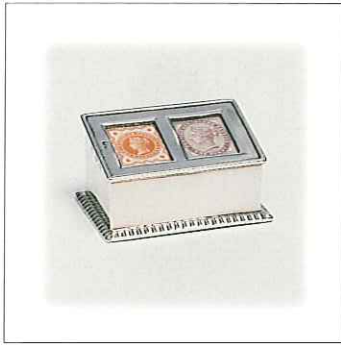
**20027**



**20028**



**20029**



**20030**



**20031**



**20032**



**20033**



**20034**



**20035**



**20036**



**20037**



**20038**



**20039**



**DFSA**



**20041**





20042



20043



20044



20045



20046



20047



20048



20049



20050



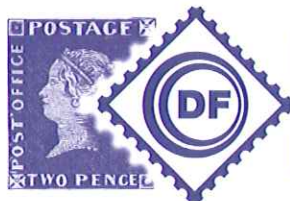
20053



20054



20055



175, Route de Chancy  
P.O. Box 81  
1213 Onex, Geneva  
Switzerland.  
Tel. +41 (0)22 727 07 77  
Fax +41 (0)22 727 07 78  
admin@davidfeldman.com  
www.davidfeldman.com

# David Feldman

## The Millennium Auction

London, Earls Court - May 26-27, 2000

### Catalogues

#### 1. Stamps and Postal History

- ♦ Cyprus (300+ Lots)
- ♦ Great Britain : The Artwork of Andrew Restall
- ♦ New South Wales : The 'Frankenstein' Collection (170+ Lots)
- ♦ Egypt (340+ Lots) Including award winning collections of :
  - 3rd and 4th Issue
  - Fuad
  - Commemoratives
- ♦ Mauritius Postal History (30+ Lots)
- ♦ Montenegro and Serbia (90+ Lots)
- ♦ Plus a wealth of better single items and major collections, Including : Austria, Bolivia, British Commonwealth including British Guiana, India & States, Ionian Islands, Ireland etc. China, Finland, France, Korea, Lebanon, Norway, Portugese Colonies-Timor; Saudi Arabia, Sweden, Thailand, Turkey etc. Plus two extensive All World Estates.

#### 2. The Primrose Collection of Stamp Boxes

- ♦ Including : Scales, inkwells, desk and writing materials.
- ♦ The 'Gerald Sattin' Collection of writing implements and accessories.

#### Postage

Each individual hardbound catalogue : Sfr. 30 (US\$ 20 • GB£ 10 • DM 30)

World leading stamp auctioneers

[illegible]





20056



20057



20058



20059



20060



20061



20062



20063



20064



20065



20066



20067

<b>20071</b>	19	Inkwell with two open stamp compartments and pen rest in front, all glass except for the mount, deeper cover to inkwell to accomodate a watch, Saunders & Shepherd, Birmingham 1904, 10.5cm, corners reduced to remove chips	<b>100 - 150</b>
<b>20072</b>	19	Two compartment box, wood carcase covered in red leather, ornately embossed silver mount to lid with windows filled with Edwardian stamps, EJ Barnsley, Birmingham 1904, 6.5cm, leather hinge broken so lid loose	<b>60 - 100</b>
<b>20073</b>	19	Desk piece containing - on a wooden base set on silver feet and within a silver frame - a central silver unit with hinged lid at top and hinged lid at front with three stamp compartments inside, revealing an inkwell with spaces either side, flanking this unit are three miniature books "THUMB ENGLISH DICTIONARY", "THUMB NOTE BOOK" and "THUMB READY RECKONER" bound in red Morocco, Betjemann & Sons, London 1905, 13cm wide, fine and extremely rare	<b>1'500 - 2'000</b>



<b>20074</b>	Combination inkwell, pen rest, clock (in working order), calendar and two	<b>800 - 1'200</b>
	compartment stamp box, the clock set into the lid of the inkwell and hinged so as to stand upright when opened, glass body with silver mounts, J. Grinsell & Sons, Birmingham 1905, 11cm long, very fine and very rare	



<b>20075</b>	Novely inkwell modelled as a knife box with dished compartment behind inkwell and drawer set into base, gilded interior, ES Barnsley, Birmingham 1905, 6.8cm high (excluding handle), drawer front slightly bent, very fine and rare	<b>800 - 1'000</b>
--------------	--	--------------------



20068



20069



20070



20071



20072



20073



20076



20077



20078



20079



20080



20081







20082



20083



20085



20086



20087



20088



20089



20090



20091



20092



20093



20094

[illegible]





20095



20096



20097



20098



20099



20103



20104



20105



20106



20107



20108



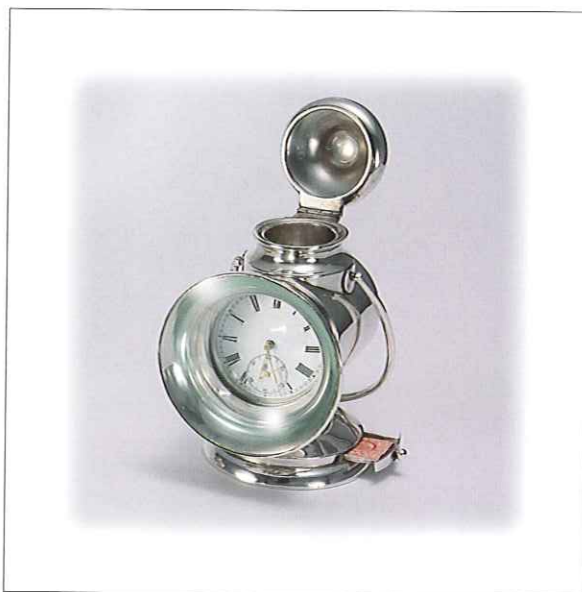
20109



20100

Desk compendium with inkwell, pen rest, semi-circular calendar and four compartment stamp box (unusually large for such a combination piece), Grey & Co., London 1908, 12cm high, very fine and rare

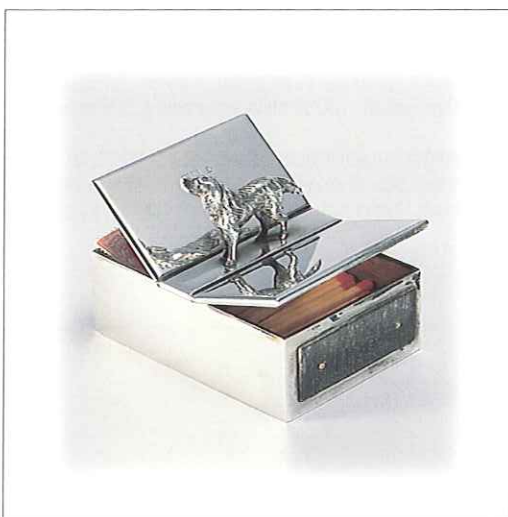
1'000 - 1'500



20101

Inkwell modelled as a lantern, with watch in working order set inside the lamp glass and a drawer for stamps in the base, Saunders & Shepherd, Birmingham 1908, 16cm high (including handle), very fine and rare

**1'000 - 1'500**



20102

Rectangular box with cast model of a DOG between two hinged lids, one opening to reveal a pair of wood-lined sloped compartments for stamps, the other a compartment for matches with steel striker fitted to outside, William Hornby, London 1908, 7.5cm long, very fine, scarce

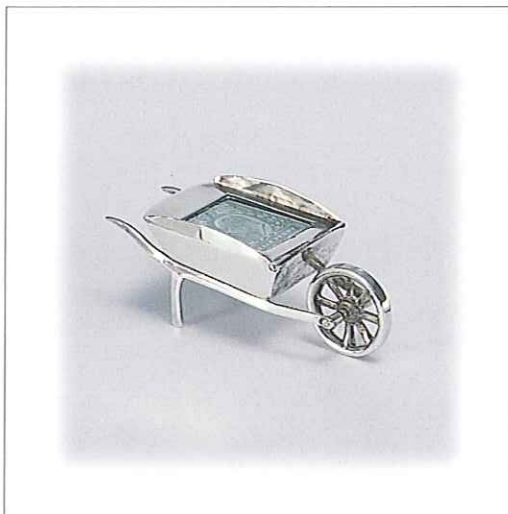
**500 - 750**

20103

23

Capstan inkwell, with stamp drawer to base, sloped and gilded interior, the lid of the inkwell fitted with a watch in working order, engraved B under a royal coronet on lid and illegible signature and 1919 to front, Saunders & Shepherd, Birmingham 1908. 9.8cm, some minor dents

**400 - 600**



20104

Novelty box modelled as a WHEELBARROW, the hinged lid fitted with an Edwardian 1/2d stamp, Saunders & Shepherd, Birmingham 1908, 6.8cm long, fine and rare

**350 - 500**

20105

23

Large capstan inkwell with two compartment stamp drawer fitted in the base, Saunders & Shepherd, Birmingham 1908, 12.1cm wide, very fine, scarce

### 300 - 400

20106

23

Novelty stamp box modelled as a coal scuttle, hinged lid with window set with a Penny Black stamp, Walker & Hall, Chester 1908, 3.6cm, marks worn

**250 - 350**

20107

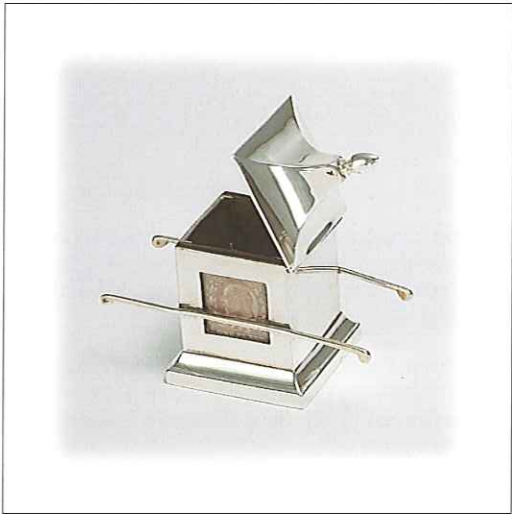
23

Two compartment case, curved to fit the pocket, central division, gilded interior, Casimir Widmer & Sons, Birmingham 1908, 5.1 cm, fine and rare

**200 - 300**



- 20108
23
Flat, two compartment case, Ahronsberg's patented design of 1903, cover engraved with scrolling foliage and a cartouche with initials, turquoise thumbpiece, marked "PATENT", Ahronsberg Brothers, Birmingham 1908, 5.3cm wide, very fine
100 - 150
- 20109
23
Flat, two compartment case, Ahronsberg's patented design of 1903, cover engraved with clover leaves, turquoise thumbpiece, marked "PATENT", Ahronsberg Brothers, Birmingham 1908? (date letter worn), 5.3cm wide, fine
100 - 150
- 20110
29
Novelty inkwell and stamp box modelled as a large fall-front desk on cabriole legs, contains two inkwells either side of single compartment box with hinged lid, gilded and sloped interior, William Hutton & Sons, Birmingham 1909, 14.2cm wide, very fine and rare
800 - 1'200



- 20111
Novelty box modelled as a SEDAN CHAIR, two compartments with central division, windows to either side set with Edwardian stamps, registered design number 550 614, maker's mark not legible, Birmingham 1909, 7.2cm, fine and very rare
600 - 800



- 20112
Three compartment stamp box with watch in working order, and pen rest, stamp box with gilded interior and hinged lid with three windows containing Edwardian stamps, Saunders & Shepherd, Birmingham 1909, 13.5cm, very fine and rare
600 - 800





20125

A travelling writing set, the exterior plain, each side hinged at base, opens to reveal two stamp compartments, sealing wax box with hinged lid, taper stick, guilloché enamel pen and pencil, match compartment with steel striker and two further compartments; interior gilded, lid engraved P under a royal crown; Asprey's, London 1911, 11.5cm, superb and extremely rare

2'000 - 3'000



20126

31 Novelty box modelled as a two tier chest of drawers, double hinged, two compartments, sloped and gilded, to each 'drawer', Elkington & Co., Birmingham 1911, 4.8cm, old, tiny repair to right front leg, otherwise very fine and very scarce

**800 - 1'000**

20127

31 Desk paper clip, the clip fitted with a two compartment stamp box with separate hinged lid, Mappin & Webb, London 1911, 10.2cm long, fine and very rare

**600 - 800**

20128

31 Novelty box modelled as a sideboard with fretted gallery (initialled T.D.B.), two drawers and turned legs, hinged top opens to reveal two sloped stamp compartments, gilt interior, Lawrence Emanuel, Birmingham 1911, 4.7cm wide, very fine and rare

**500 - 600**

20129

31 Flat, two compartment case, marked "PATENT" for Ahronsberg's 1903 patent, engine-turned cover, garnet thumbpiece, Ahronsberg Brothers, Birmingham 1911, 5.3cm, fine

**100 - 150**

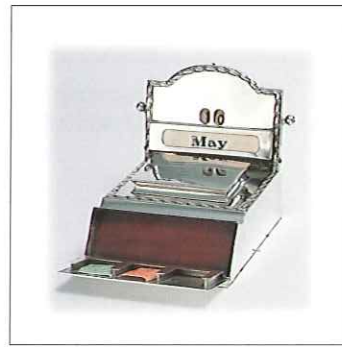




20110



20112



20113



20114



20115



20116



20118



20119



20120



20121



20122



20123

<b>20130</b>	31	Pocket type case, hinged at base, compartment in each half, engine-turned with bands, AE Jones, Birmingham 1911, 3.1cm., very fine	<b>80 - 120</b>
<b>20131</b>	31	Pocket style case, hinged at base, compartment in each half, engraved with cartouche within profuse foliage, AE Jones, Birmingham 1911, 3.1cm, very fine	<b>80 - 120</b>



<b>20132</b>		Novelty box modelled as a POST OFFICE CART, the body wood painted red and "PARCEL POST", the wheels, undercarriage, shafts and lid mount in silver, interior partially leather lined, Mappin & Webb, London 1912, 7cm high, fine and extremely rare (ex. Davis collection)	<b>1'200 - 1'500</b>
<b>20133</b>	31	Book-form stamp box with glass body and spring hinged silver lid engraved "STAMPS", two sloped compartments, Grey & Co., Chester 1912, 6.6cm, very fine and scarce	<b>250 - 350</b>
<b>20134</b>	31	Two compartment box, stepped rectangular on spreading feet, maker's mark not legible, Birmingham 1912, 6cm wide, fine	<b>100 - 150</b>
<b>20135</b>	31	Pocket type case, hinged at base, compartment in each half, engraved with initials in a cartouche within protuse foliage, AE Jones, Birmingham 1912, 3.1cm, minor dents	<b>80 - 120</b>
<b>20136</b>	31	Octagonal inkwell with hinged stamp compartment set into front facet which is engraved 'Stamps' in script, cover set with pen rest, maker's mark not legible, Birmingham 1913, 6.5cm, very fine and scarce	<b>400 - 600</b>
<b>20137</b>	31	Novelty two compartment box modelled as a TRUG (GARDEN BASKET), glazed windows to hinged lids, gilt interior, Saunders & Shepherd, Chester 1913, 6.5cm long, very fine and very scarce	<b>400 - 600</b>
<b>20138</b>	33	Pocket style case, hinged at base, compartment in each half, engraved with a heart-shaped cartouche in scrolling foliage, AE Jones, Birmingham 1913, 3.1cm, fine	<b>80 - 120</b>
<b>20139</b>	33	Inkwell with stamp compartment either side and pen rest in front, all glass except for rim and cover of inkwell, Barnards, London 1914, 13cm, very fine	<b>250 - 350</b>
<b>20140</b>	33	Two compartment box with gadrooned base and sloping hinged lid with windows containing George V 1/2d and 1d stamps, gilt interior, H Matthews, Birmingham 1914, 6cm wide, fine	<b>150 - 250</b>



20124



20126



20127



20128



20129



20130



20131



20133



20134



20135



20136



20137







20138



20139



20140



20141



20142



20143



20144



20145



20146



20147



20148



20149

**ENVELOPES: SILVER MOSTLY WITH SUSPENSION RINGS**





20151



20152



20155



20154



20156



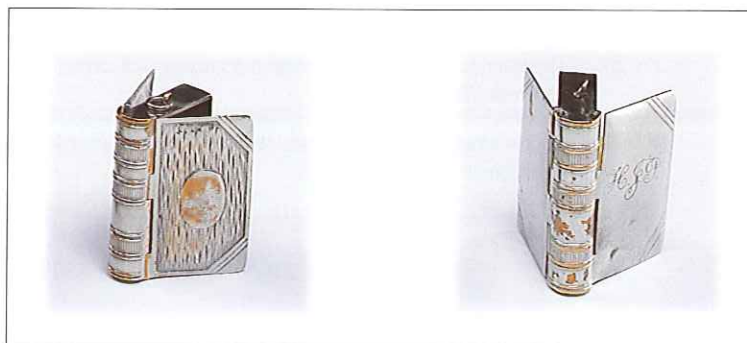
20157



20158



20159



20160





20161



20162



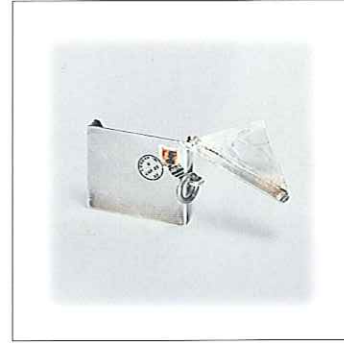
20163



20164



DFSA



20166



20167



20168



20169



20170



20171



20172





20173



20174



20175



20176



20177



20178



20179



20180



20181



20182



20183



DFSA



20185



20186



20187



20188



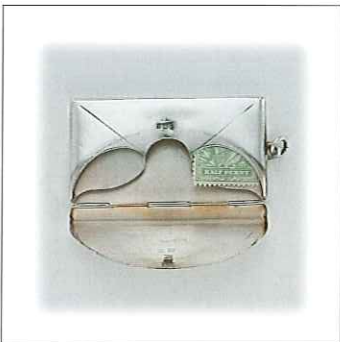
20189



20190



20191



20192



20193



20194



20195



20196

<b>20193</b>	39	Double envelope-type with central division and foliate engraving, inscribed Hilda 1918, A.E. Jones, Chester 1911, 4.4cm, internal clips missing	<b>100 - 150</b>
<b>20194</b>	39	Single envelope-type with blue enamelled "STAMPS" on reverse, Crisford & Norris, Birmingham 1911, 2.8cm, some losses to enamel	<b>60 - 100</b>
<b>20195</b>	39	Single envelope-type, plain, Crisford & Norris, Birmingham 1911, 2.8cm, minor dents	<b>40 - 60</b>
<b>20196</b>	39	Single envelope-type, enamelled "STAMPS" in blue on back, Crisford & Norris, Birmingham 1912, 2.8cm, extremely fine	<b>100 - 150</b>
<b>20197</b>	41	Single envelope-type case, foliate engraved, Adie & Lovekin, Birmingham 1913, 2.9cm, dents	<b>50 - 80</b>
<b>20198</b>	41	Double envelope-type case with central division, front enamelled with a purple George V 2 1/2d stamp cancelled with a black date stamp for August 4 1915, A.E. Jones, Chester 1914, 4.2cm, minor dents and one internal clip missing, otherwise fine and rare	<b>200 - 250</b>
<b>20199</b>	41	Double envelope-type with central division and engine-turned decoration, Adie & Lovekin, Birmingham 1916, 4.4cm, severely dented	<b>80 - 100</b>
<b>20200</b>	41	Single envelope-type, plain, Crisford & Norris, Birmingham 1920, 2.8cm, fine	<b>40 - 60</b>
		<b>OTHERS</b>	
<b>20201</b>	41	Combined stamp case and letter scales in the form of a maltese cross, James Allen's design of 1888, marked with the registered number, gilded brass, 3.7cm, very fine and scarce	<b>200 - 300</b>
<b>20202</b>	41	Another example but rectangular with incurved corners, the reverse modelled as the back of an envelope, gilded brass, 3.8cm, very fine	<b>150 - 250</b>
<b>20203</b>	41	A similar example but originally silvered brass, only a few traces of silvering remaining on the exterior	<b>150 - 200</b>



<b>20204</b>		"The Wonderland Postage Stamp Case" card case in paper slip-case with divisions for the twelve stamps of the 1887 Jubilee issue, cover and case depict Alice in Wonderland, accompanied by "Wise words on letter writing" by Lewis P. Carroll (publ. 1890), 10.4cm, fine and scarce	<b>100 - 150</b>
<b>20205</b>	41	Single compartment box in brass, plain, the lid set with a glazed window containing a 1d black, mid 19th century, 3.5cm, fine	<b>150 - 250</b>
<b>20206</b>	41	A similar box but with foliate engraving around window and the sides, 1d red in window, gilded, mid 19th century, 4cm long, very fine	<b>150 - 250</b>
<b>20207</b>	41	A similar box but with ropework borders to top and bottom, 1d black in window, gilded, mid 19th century, very fine	<b>150 - 250</b>
<b>20208</b>		A double version of this type, engraved overall with scrolling foliage, 1d red and 2d blue in windows, gilded, mid 19th century, fine	<b>200 - 300</b>

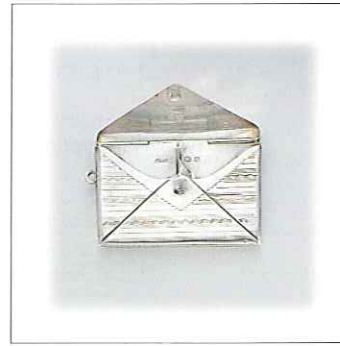




20197



20198



20199



20200



20201



20202



20203



20205



20206



20207



DFSA



20209

<b>20209</b>	41	A triple version of this type, with large central compartment for receipt stamps, sides engraved with floral panels, standing on six ball feet, gilded, mid 19th century, 9.3cm wide, very fine	<b>350 - 450</b>
<b>20210</b>	43	Three round tartanware boxes, M'Beth tartan set with a 'stamp' depicting Rowland Hill, a 'stamp' imitating a 2d blue and a real penny red, mid 19th century, 'stamps' faded	<b>100 - 200</b>
<b>20211</b>	43	A travelling inkwell with stamp compartments either side, the lids lined in red leather and gold-tooled 1D and 2D, all in red leather covered case with lock, lid tooled "Postage Vignettes", mid 19th century, 9cm wide, very fine and rare	<b>250 - 350</b>
<b>20212</b>	43	Book-form two compartment box, leather bound with title on spine "STAMPS", interior divided but not dished, paper lined, mid 19th century, 8cm, scarce	<b>80 - 120</b>
<b>20213</b>	43	Mauchline ware two compartment case of slip-case form, transfer print of NEWQUAY, 6cm long, drawer stiff otherwise very fine	<b>50 - 100</b>
<b>20214</b>	43	Another, with transfer prints of EUSTON BARRACKS and of ROSSALL COLLEGE, lid stuck otherwise very fine	<b>50 - 100</b>
<b>20215</b>	43	Another, with transfer prints of LOCH TUMMEL and BRIDGE of CLUNIE, very fine	<b>50 - 100</b>
<b>20216</b>	43	Another, with transfer print of STIRLING CASTLE, very fine	<b>50 - 100</b>
<b>20217</b>	43	A single compartment mauchline ware case, pull off lid, with transfer prints of NEW COLLEGE and BRASENOSE COLLEGE in Oxford, 3.4cm, very fine	<b>50 - 100</b>
<b>20218</b>	43	A single compartment tartanware case, M'Beth tartan, pull-off lid, 3cm, very fine	<b>50 - 100</b>
<b>20219</b>	44	A tartanware two compartment box, Rob Roy tartan "FROM THE DOUGLAS ROOM STIRLING CASTLE", 6.5cm, a smaller two compartment box in chequered pattern and a tartanware snuffbox, first and last fine, second a little worn	<b>100 - 200</b>
<b>20220</b>	44	A leather wallet with compartments for cards, tickets and stamps, the latter gold-tooled with representations of the 1/2d, 1d and 2 1/2d stamps issued in 1887, 9.5cm, distressed, together with a small leather folder with two stamp compartments, issued to life members of the Grosvenor Co-operative Stores,, Oxford Street, and a little leather envelope-type folder impressed "STAMPS"	<b>100 - 200</b>
<b>20221</b>	44	Gilded-brass single compartment box with sprung dispenser, top retaining plate modelled as a horseshoe and enamelled in blue, base engraved "TOULMIN & GALE, CHEAPSIDE", 4cm, chip to enamel, otherwise fine and rare	<b>100 - 200</b>
<b>20222</b>	44	Travelling writing set, hidden press button opening, gilt interior, exterior covered in black leather, the lid tooled "Ink", contains stamp compartment with hinged lid, inkwell with hinged lid, pen wiper, telescopic pen and nib compartment, 7.5cm, scarce	<b>100 - 150</b>
<b>20223</b>	44	Stitched card stamp case and slip covered, stitched in green "In England letters/find no grace/unless they bear/Victoria's face/To guard her head/from dust and damp/this case is made/for postage stamps", 8cm, very fine	<b>50 - 80</b>
<b>20224</b>	44	Book-form case with bone covers, spine and closing pin, engraved "stamps" on front, opens to reveal a concertina of 11 compartments, inside lined in blue silk, 3.8cm, very fine and scarce	<b>100 - 200</b>
<b>20225</b>	44	Three compartment box in green leather, lid tooled "stamps" and with sprung hinge, 9cm, fine	<b>80 - 120</b>
<b>20226</b>	45	Ebony paperknife with two compartment stamp box carved into handle, sliding lid with unmarked silver-coloured metal mounts, lid stamped "PATENT", probably British but could be Commonwealth or American, 32cm, very fine and very rare	<b>400 - 600</b>
<b>20227</b>	45	Three compartment box bound in green leather, the lid gold tooled with Art Nouveau foliage, interior lined in black leather, sprung hinge to lid, base stamped in gold "JC VICKERY, REGENT STREET", 8.5cm, superb and rare	<b>150 - 250</b>
<b>20228</b>	45	Three compartment Tunbridgeware box, lid with George V 1/2d green between mosaic panels, interior with slopes and divisions. 9.1cm, fine	<b>80 - 120</b>



20210



20211



20212



20213



20214



20215



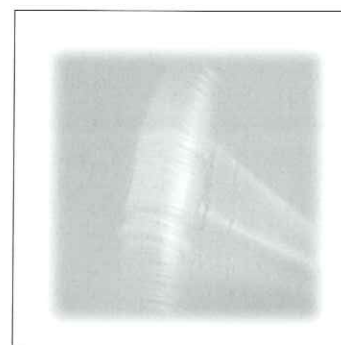
20216



20217



20218



DFSA

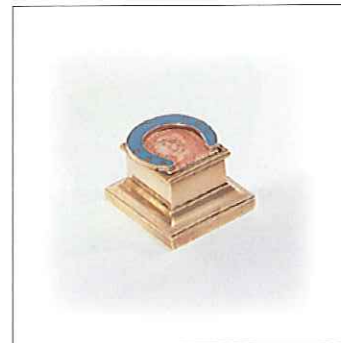




20219



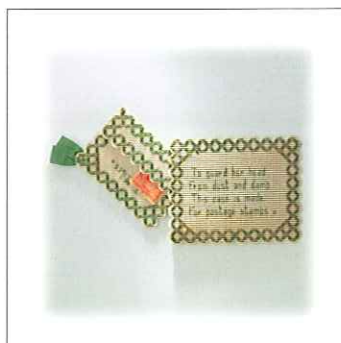
20220



20221



20222



20223



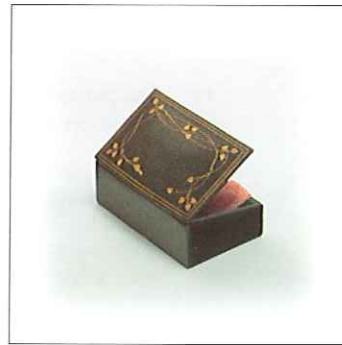
20224



20225



20226



20227



20228



20229



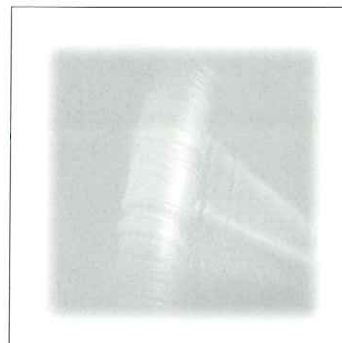
20230



20231



20232



DFSA







20236

Gold-plated envelope form case, enamelled with a 2c red stamp and black cancellation and backstamp "9.24.90", front engraved with an address, Flap hinged at corner and marked inside "PAT.JUNE 24.90", 3.2cm, minor dents scarce

100 - 200

## SILVER AND SILVER-PLATED

20237

48 Small silver envelope-type case, face enamelled with a 2c red American stamp postmarked "New York '91", black enamelled backstamp "REC's 10.6.91", marked inside flap "STERLING, PAT JUN 24 '90", 3.2cm, few minor dents to front, otherwise fine and scarce

**300 - 400**

20238

48 Two compartment case with central spring between base plates to front and back compartments, each with a hinged lid, marked "PATENT 1895" and "STERLING", Whiting Manufacturing Co. of Providence, Rhode Island, 3.1cm high, fine and scarce

**150 - 200**

20239

48 Silver case of shaped outline, heavily embossed border of scrolls and flowers, engraved with a monogram and "Sept 10, 1896", Unger Brothers, Newark NJ, marked "STERLING", 4.5cm, dented

**100 - 200**

20240

48 A similar case by the same makers, but also finely embossed on one side with a heart transfixd by an arrow surrounded by cupids and floral garlands, 4.3cm, fine and scarce

**200 - 300**

20241

48 Silver three compartment box, the lid and sides embossed with scrolling decoration, sloped wood base to interior with silver divisions, Gorham Manufacturing Co. Providence RI, marked "STERLING", 7cm, very fine and scarce

**150 - 200**

20242

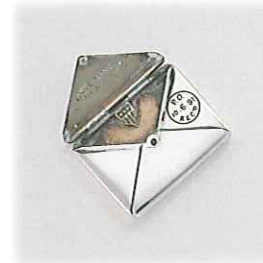
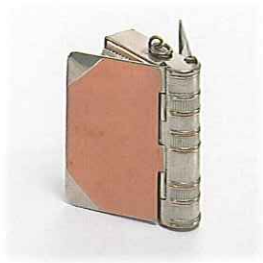
49 Small silver rectangular case embossed with scrolling foliage around a cartouche engraved with initials, marked "STERLING", 3.2cm, fine

**50 - 100**

20243

49 Single compartment case with embossed lid and gilded interior, marked "STERLING", 3cm, fine

**100 - 150**



20237



20233



20238



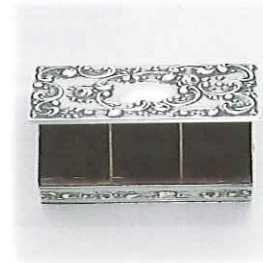
20234



20239



20240



20241



20242



20243



20245



20246



20247



20248



20249



20250



20251



20252



20253



20254





<b>20244</b>		Three compartment box, rectangular with shaped lid, engraved with masks and birds in scrolling foliage and initials in cartouche, gilded and dished interior with divisions, Gorham Manufacturing Co. Providence RI, marked "STERLING", 11cm, very fine	<b>250 - 350</b>
<b>20245</b>	49	Trough shaped box on four ball feet, lid and body stamped with Rococo decoration, gilded interior but no division, Tiffany & Co. New York, marked "STERLING", 5.7cm, very fine	<b>200 - 300</b>
<b>20246</b>	49	Silver case of shaped outline heavily embossed with Art Nouveau vegetation, marked "STERLING", 3.2cm, fine	<b>100 - 150</b>
<b>20247</b>	49	Silver rectangular single compartment case, gilded and dished interior, the lid finely embossed with a cupid in an oval medallion surrounded by flowers, Woodside Sterling Co., New York, marked "STERLING", 3.8cm, very fine	<b>150 - 200</b>
<b>20248</b>	49	Spherical box on foot, the lid embossed with floral garlands, the interior with dividing panels providing five compartments, maker's mark S in a shield with knight's helm above, marked "STERLING", 7.6cm high, very fine and very rare	<b>600 - 800</b>
<b>20249</b>	49	Novelty box modelled as a BED-WARMING PAN, the handle terminating in a seal, maker's mark possibly that of Gorham Manufacturing Co. of Providence, Rhode Island, marked "STERLING", 11.2cm long, splits to corners of box, but rare form and rare combination	<b>300 - 400</b>
<b>20250</b>	49	Novelty case modelled as a HANDBAG, engraved with foliate scrolls, gilded interior fitted with clips to each side, Foster & Bailey, Providence, Rhode Island, marked "STERLING", 3.3cm wide, very fine and scarce	<b>200 - 300</b>
<b>20251</b>	49	Silver-plated desk piece with inkwell, stationery clip and stamp compartment, deeply embossed border, 12.5cm, plating worn on highlights	<b>60 - 80</b>
<b>20252</b>	49	Silver stamp booklet holder finely die-stamped with a portrait of President McKinley, the White House and date March 4th 1901 to front and "Postage Stamps" and the Capitol building to reverse, 8cm, very fine	<b>100 - 200</b>
<b>20253</b>	49	Silver rectangular three compartment box with beaded borders, the lid engraved with a script monogram, Wilcox Silver Plate Co., Meriden, Conn, 9.4cm, very fine	<b>150 - 200</b>
<b>20254</b>	49	Silver three compartment box, the lid pierced with scrolls and engraved "Edna", Howard & Co., New York, also marked "STERLING" and "1905", 11.5cm, very fine and scarce	<b>250 - 400</b>
<b>20255</b>	52	Small tubular strip dispenser, engine turned decoration, marked "AM Co." and "STERLING SILVER", 4.4cm, very fine	<b>60 - 80</b>

<b>20256</b>	52	Silver envelope case with inlaid engraved Washington 2 cents postmarked NEW YORK, December 25, 1892 incl. similar but REC'D circular date stamp on reverse, pin closure, 6 x 4cm, Gornam M.G.G Co. and STERLING, a few insignificant dents, fine and very scarce	<b>300 - 500</b>
<b>20257</b>	52	Small tubular strip dispenser, engine turned decoration, marked "AM Co." and "STERLING SILVER", 4.4cm, very fine	<b>60 - 80</b>
<b>20258</b>	52	Small tubular strip dispenser, with foliate engraved decoration, marked "AM Co." and "STERLING SILVER", 4.4cm, very fine	<b>60 - 80</b>
<b>20259</b>	52	Silver rectangular case with rounded end fitted with clasp, the interior fitted with a clip to each side, the engine turned lid applied with a stag's head and a small enamelled badge, marked "MARATHON STERLING", 4.5cm, very fine	<b>100 - 150</b>
<b>20260</b>	52	Silver rectangular case with rounded end fitted with clasp, the interior fitted with a clip to each side, the engine turned lid inlaid with two gold bands and the central cartouche plain, marked "14K GOLD ON STERLING", 4.5cm, very fine	<b>100 - 150</b>
<b>20261</b>	52	Silver rectangular single compartment case, gilded and dished interior, lid embossed with a two cents American stamp, marked "STERLING", 2.7cm, very fine	<b>150 - 200</b>
<b>20262</b>	52	Coil dispenser modelled as a barrel with staves and hoops, marked "TIFFANY & Co., MAKER'S STERLING", 4cm high, very fine	<b>200 - 300</b>
<b>20263</b>	52	Coil dispenser, the hinged lid set with a cast model of a POODLE, the body on spreading foot, marked "STERLING", 6.2cm high, very fine	<b>150 - 200</b>
<b>20264</b>	52	Coil dispenser with pull-off lid and scroll handle, marked "STERLING", 4.2cm high, very fine	<b>100 - 150</b>
<b>20265</b>	52	Silver single case with embossed border, on side applied with a fleur de Lys, the other engraved with a church and "SALT LAKE", marked "STERLING", 4cm, fine	<b>100 - 150</b>
<b>20266</b>	52	Round coil dispenser, gilded interior and central spindle, hinged lid finely engraved with a dog chasing a rabbit, Blackington & Co., North Attleboro, Mass, marked "STERLING", 4.8cm wide, very fine	<b>100 - 150</b>



<b>20267</b>	Round coil dispenser with gilded interior and central spindle, lid guilloché enamelled in light blue, marked "STERLING" only, 4.8cm, very fine	<b>100 - 200</b>
--------------	--	------------------



20255



20256



20258 20257



20259



20260



20261



20262



20263



20264



20265



20266



20269





20270



20271



20272



20273



20274



20275



20276



20277



20278



20279



20280



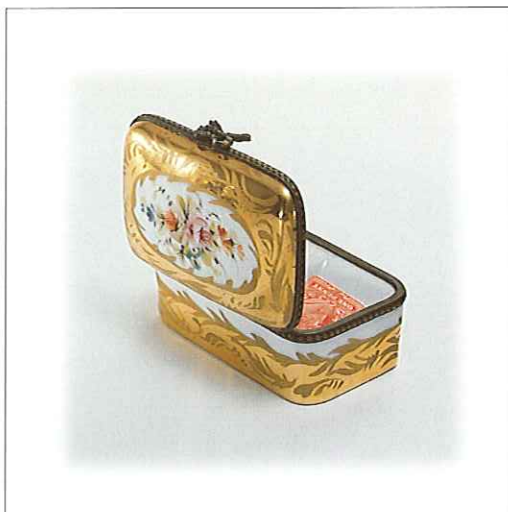
20281



<b>20281</b>	53	Large envelope-type case in white metal (nickel alloy?), die stamped on front with a 'stamp' featuring Uncle Sam and the legend "DO NOT PERMIT" postmarked Chicago 21st August 1892 and addressed to "W.F. (world fair) Souvenir, Chicago Ill". 6cm, suspension ring missing, otherwise very fine and scarce	<b>100 - 200</b>
--------------	----	--	------------------

FRANCE

## PORCELAIN



<b>20282</b>	Two compartment box, lid painted with a bouquet of flowers on a white ground with gilded surround and sides, hinged copper mounts with bow thumbpiece, initial signature on base, 5.7cm, fine	<b>50 - 100</b>
--------------	---	-----------------



<b>20283</b>	57	Two compartment box painted with flowers on a duck-egg blue ground, copper mounts with floral thumbpiece, signed CL, 5.7cm, fine	<b>50 - 100</b>
--------------	----	--	-----------------

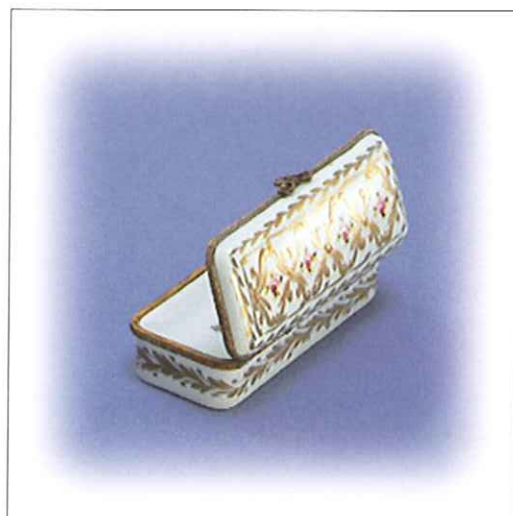
<b>20284</b>	57	Two compartment box, lid painted with flowers on a pink ground, copper mounts with bow thumbpiece, signed PH, 5.7cm, fine	<b>50 - 100</b>
--------------	----	---	-----------------

<b>20285</b>	Two compartment box, the lid painted with a oval garland of flowers on a duck-egg blue ground, copper mounts with garland thumbpiece, signed CL, 5.7cm, fine	<b>50 - 100</b>
--------------	--	-----------------

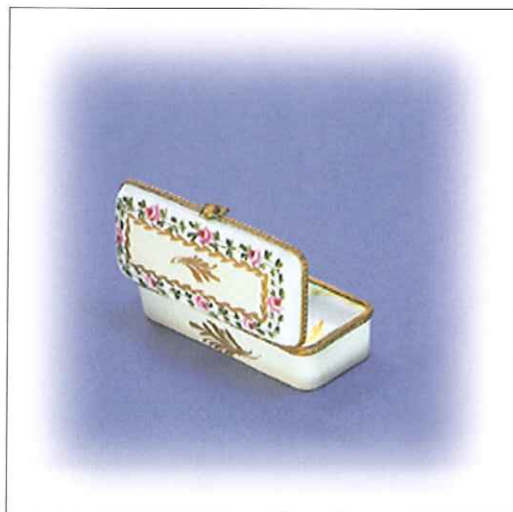
<b>20286</b>	57	Two compartment box, lid painted with flowers on a light brown ground, copper mounts with bow thumbpiece, signed PH, 5.7cm, fine	<b>50 - 100</b>
--------------	----	--	-----------------



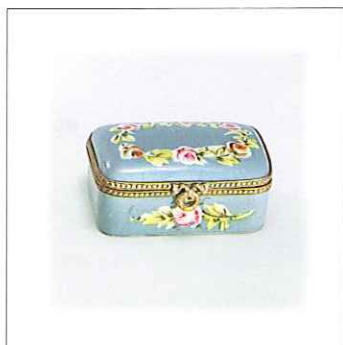
<b>20287</b>	87	Two compartment box, lid painted with a bouquet with gold border, mauve body, copper mounts with butterfly thumbpiece, signed PR, 5.7cm, lid discoloured	<b>50 - 100</b>
<b>20288</b>	87	Two compartment box, lid painted with musical instruments in mauve on white ground, copper mounts with oak leaf thumbpiece, signed "rue de la paix", 5.7cm, fine	<b>50 - 100</b>
<b>20289</b>	87	Two compartment box, lid painted with roses in a gold cartouche on a beige ground, copper mounts with shell thumbpiece, signed LP, 5.7cm, fine	<b>50 - 100</b>
<b>20290</b>	87	Two compartment box, lid painted with roses between gold 'X's on a white ground, copper mounts with roundel thumbpiece, signed DS, 5.7cm, fine	<b>50 - 100</b>



<b>20291</b>	A larger box with similar decoration but scroll thumbpiece, interior with one stamp and one longer sloped compartment, signed LC. 8.5cm, fine	<b>100 - 200</b>
--------------	---	------------------



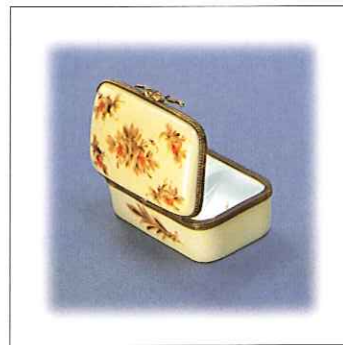
<b>20292</b>		A box of similar format but lid painted with border of roses around central gold scroll, thistle thumbpiece, signed RP, 8.5cm, fine	<b>80 - 120</b>
<b>20293</b>	57	A box of similar format, blue and white decoration, white metal mounts with flower thumbpiece, unsigned, 8.5cm, fine	<b>80 - 120</b>



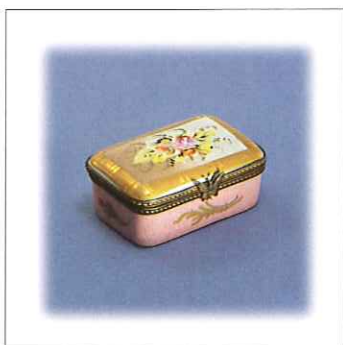
20283



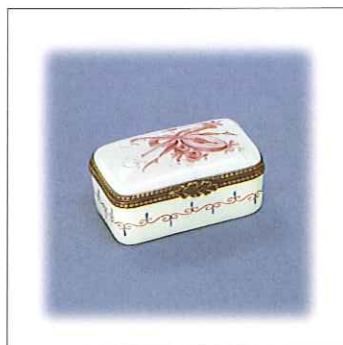
20284



20286



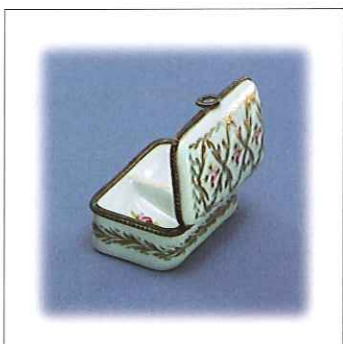
20287



20288



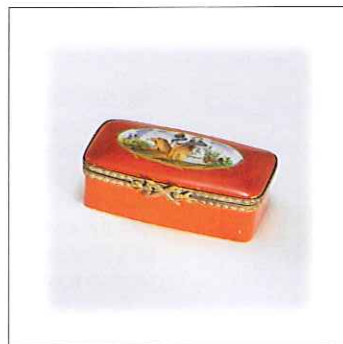
20289



20290



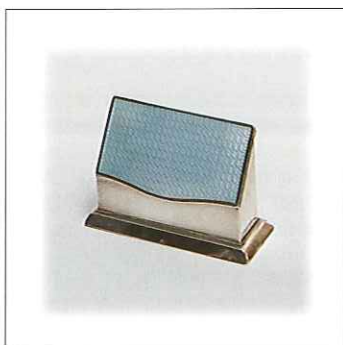
20293



20294



20295



20297



DFSA

**30 - 40**

### DECORATIVE



800 - 1'000

<b>20304</b>	61	Single compartment box, gilded brass, the exterior in chamélevé enamel, 4.8cm, very fine	<b>150 - 250</b>
<b>20305</b>	61	Three compartment wooden box bound in brown leather finely tooled in gold with fleurs de lys and scrolling foliage, 8cm, superb	<b>150 - 250</b>
<b>20306</b>	61	Novelty silver-plated stamp box modelled as a lecturn, gilded and sloped interior, silver on copper, 5.1cm, minor wear, very rare (ex. Huguen collection lot 223)	<b>150 - 250</b>



<b>20307</b>	Two compartment walnut box modelled as a PAIR OF BELLOWS, 10.3cm, very fine, rare	<b>100 - 200</b>
--------------	---	------------------



<b>20308</b>		Silver-plated two compartment box, the lid engraved (etched) after an 18th century painting "L'INSPIRATION FAVORABLE" in circular frame between floral rays, 6.5cm, very fine	<b>100 - 200</b>
<b>20309</b>	61	Silver-plated box, the hinged sloping lid set with fleur de lys and medallion of St. Michael, two sloped compartments to the interior, plating worn in places, 6.6cm wide, attractive and rare	<b>150 - 200</b>
<b>20310</b>	61	Silver-on-copper two compartment box, the lid finely etched or die-stamped with a scene taken from a 17th century painting, gilded interior, 6cm wide, plating worn on lid (ex. Huguen collection lot 220)	<b>150 - 200</b>



## OTHERS



days of the auction sale date, even though the lots may be held by **DF** awaiting full settlement of the account. Until delivery, all lots may be examined by their respective buyers at the offices of **DF**.



*Diners Club  
International*



20298



20299



20300



20301



20302



20303



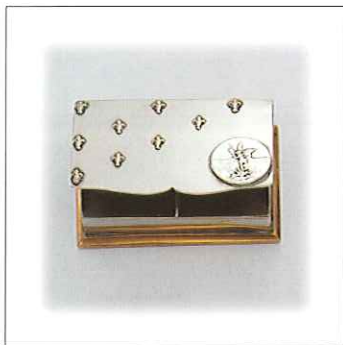
20304



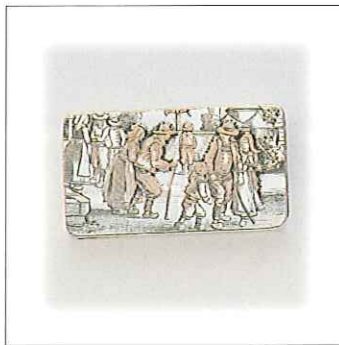
20305



20306



20309



20310



20311



20312



20313



20314



20315



20316



20317



20318



20319



20320



20321



20322

## RUSSIA

## FABERGÉ AND ASSOCIATED WORKSHOPS



20323

Silver and enamel stamp box, the lid and sides in guilloché opalescent white enamel painted with garlands of flowers in sepia, stiff leave border at base, standing on four fluted bun feet, the gilded interior divided into four compartments sloping to the front, marked K. Fabergé in cyrillic, workmaster Henrik Wigström, and 88 standard mark for St. Petersburg 1908-17, 7.5cm long, minute chips to enamel at back corners of the lid, otherwise superb and extremely rare

**10'000 - 15'000**







20325

A silver-gilt and cloisonne enamel desk set, comprising a shaped tray fitted with a pen rack and enamelled with a dragon among colourful floral scrolling foliage on a cream ground with a border of floral panels on darker grounds, a two compartment stamp box the lid enamelled enplein with 5 and 7 kopek stamps, another box, an inkwell also enamelled with a peacock, a blotter, a paper knife, a pen and a pencil holder, superb and rare, the most valuable item in this magnificent collection. Fyodor Rückert, Moscow 1896-1907, 34.2cm (provenance: Sotheby's New York, Dec. 15 1989, lot 345)

75'000 - 100'000



20326

A letter rack by the same maker as the preceeding lot and engraved with the same monogram, enamelled in a slightly different palette, the front with panel enamelled with two guards holding halberds crossed before locked doors, the back pierced and engraved with openwork design, within a cloisonné border, Fyodor Rückert, Moscow 1896-1907, 16.7cm high, some losses to enamel at base of both sides of the border of the back plate, otherwise very fine and rare.  
An extremely important and valuable item.  
(Provenance: as preceeding lot)

20'000 - 30'000



20327

A silver-gilt and cloisonné enamel stamp box, the lid enamelled with 5 and 7 kopek stamps amid colourful scrolling foliage, gilded and sloped interior with central division, Fyodor Rückert, Moscow 1896-1907, 6cm wide, superb and rare  
Provenance: Christie's 1987 lot 101

**15'000 - 25'000**



20328

A silver and cloisonné enamel stamp box, square on spreading foot, enamelled in various shades of blue with red and white, gilded and sloped interior, Gustav Klingert, Moscow 1894, 4.8cm, a few minute chips on lid, otherwise very fine and rare, ex. Davis Collection

**1'500 - 2'500**





20329

A burr maple stamp box with silver and cloisonné enamel mounts in blue, red and green, standing on four ball feet, two sloped compartments with central division, maker's mark NL, St. Petersburg 1896-1907, 5.5cm, minor chips to enamel at corners otherwise very fine and rare

2'000 - 3'000

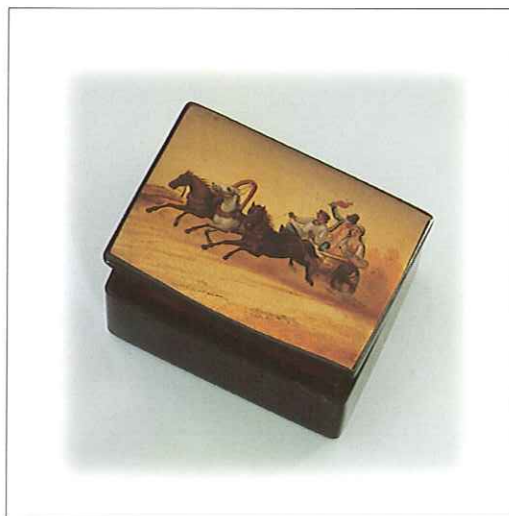
**DECORATIVE**

20330

71

Lacquered papier-maché single compartment box, lid painted with a dining scene, Lukutin factory mark inside lid, 3.9cm long, superb and rare

**500 - 700**



20331

Lacquered papier-maché box with two compartments, lid painted with three peasants in a troika at sunset, Vishniakov factory mark inside lid (faint but clearly discernable), 6cm wide, very fine and rare. Provenance Huguen collection

800 - 1'000

20332

71

A modern papier-maché box, the lid painted with ladies spinning, interior neither sloped nor divided. 6.2cm, very fine

**50 - 100**

<b>20333</b>	71	Novelty silver box modelled as a throne, the hinged seat forming the lid to a single sloped compartment, the back pierced and engraved with crowned eagles and arabesques, maker's mark MG in cyrillic, Moscow 1899-1908, 6.9cm high, very fine and rare	<b>400 - 600</b>
--------------	----	--	------------------

## ITALY



<b>20334</b>	Three compartment box on ball feet, the lid set with a micro-mosaic of flowers, 9cm wide, corners bent, gilding a little worn but mosaic fine, rare	<b>200 - 400</b>
--------------	---	------------------



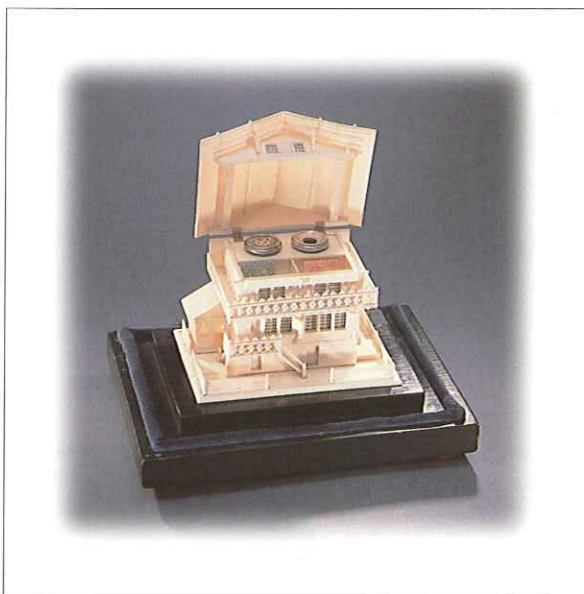
<b>20335</b>	Two compartment box on ball feet, the lid set with a micro-mosaic of flowers, gilded copper body, 6cm wide, very fine, rare	<b>200 - 400</b>
--------------	---	------------------

<b>20336</b>	71	Three compartment wooden box, the lid painted with a coat of arms within scrolling foliage, interior lined in red silk, 11cm, very fine	<b>100 - 200</b>
--------------	----	---	------------------

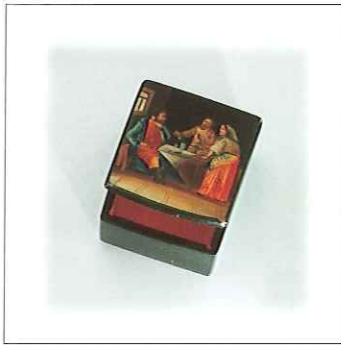
<b>20337</b>	71	Two compartment box in gold lacquered copper, lid decorated in enamel or plastic paints with a Modern Art design, in green, white and gold within a black border, 20th century, 5.5cm, fine and stylish	<b>60 - 100</b>
<b>20338</b>	71	Lacquered red metal blotter of small size with two stamp compartments under hinged lid, 5.1cm, very fine	<b>30 - 50</b>

**EUROPE**

## GERMANY, AUSTRIA AND NETHERLANDS



<b>20339</b>		Desk piece superbly modelled as a four storey chalet in bone, the windows all backed with mirror glass, roof opens to reveal two stamp compartments, a silver plated inkwell and sander, sits on a black wooden plinth with ball feet, German, Austrian or possibly Swiss, 10cm high (excluding plinth), very fine and very rare	<b>800 - 1'000</b>
<b>20340</b>	71	Travelling inkwell with stamp box, the lid with gold tooled "Stamps", red leather covering card with copper mounts, impressed "GESCHUTZT", probably German, 7.3cm long, fine	<b>100 - 150</b>
<b>20341</b>	71	Wood novelty stamp box and inkwell, modelled as a chalet and standing on four feet, Bavarian, Swiss or Austrian?, 16cm wide, very fine	<b>80 - 120</b>
<b>20342</b>	71	Three porcelain boxes with pull-off lids, one with three compartments and lid painted with garlands of flowers in a rectangular blue frame, fine, another with two compartments and lid painted with a bouquet of flowers, gilded border rubbed, a third with three compartments and lid painted with flowers in a green scale pattern surround, Dresden, damaged, first 9cm wide Provenance: Huguenot collection	<b>80 - 120</b>
<b>20343</b>	71	Combined three compartment stamp box with two section stationery holder and pen rest, the hinged lid to stamp box and the hinged stationery supports all embossed and pierced with Art Nouveau motifs, marked "AUSTRIA" at back, brass, 22cm long, very fine	<b>80 - 120</b>
<b>20344</b>	73	Wooden three compartment box, lid set with panels of striated brown agate within a metal frame, Carlsbad retailers label on base, 8.8cm, fine	<b>80 - 120</b>



20330



20332



20333



20336



20337



20338



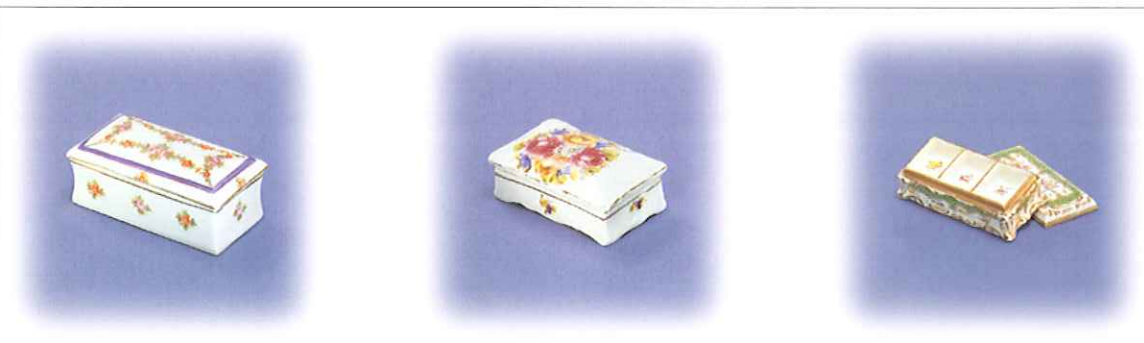
20340



20341



20343



20342



**60 - 100**



**500 - 750**

**300 - 400**

**100 - 200**

**100 - 200**

80 - 120

**300 - 400**

**200 - 300**



20344



20345



20347



20348



20349



20350



20351



20356



20357



20358

## SCANDINAVIA



20353

Danish silver book-form case with pivoting inner sleeve, covers embossed with poppies in an Art Nouveau style and "FRIMAERKER" in a scroll on front, marked "830" and "o", 3cm, fine and very rare (ex. Hugen collection lot 238)

400 - 800



20354

Norwegian silver stamp box and damper, glass base with silver mounts, half comprising a well for a sponge, the other half comprising a two compartment stamp box with hinged lid engraved GB in monogram, marked "AD 830s", 9cm, very fine and very rare

300 - 500

## SWITZERLAND



- |              |    |   |                    |
|--------------|----|---|--------------------|
| <b>20355</b> |    | Silver-plated four compartment box, the sides embossed with Art Nouveau motifs, the lid set with five medallions showing scenes from William Tell, the Swiss Army and Helvetia, standing on four ball feet, 11.6cm wide, plating on medallion, slightly worn, extremely rare      | <b>800 - 1'200</b> |
| <b>20356</b> | 73 | Carved wooden blotter with stamp compartments either side of central handle, hinged lids carved with flowers, "CHILLON" at side, 14.6cm, very fine  | <b>100 - 200</b>   |
| <b>20357</b> | 73 | Silver plated two compartment box, the lid embossed with sinuous flowers and applied with an enamelled shield displaying the arms of Geneva, body with bark effect, detachable inner slope with central division, 6cm, plating slightly worn on top, otherwise fine and very rare | <b>100 - 200</b>   |
| <b>20358</b> | 73 | A three compartment box with trick opening, the lid carved with flowers, 10.5cm, together with a two compartment box and a nib box in the same style, all probably Swiss and fine   | <b>100 - 150</b>   |
| <b>20359</b> | 81 | Two compartment wooden box, the lid painted with violet flowers and "Adelboden", 6.5cm, fine  | <b>60 - 80</b>     |



**Please *Airmail* your Bids as early as possible**

in the case of equal bids, the first bid received will take precedence.

**David Feldman SA**

PHILATELISTS • AUCTIONEERS

175, route de Chancy • P.O.Box 81 • 1213 Onex, Geneva • Switzerland

Tel. +41 (0)22 727 07 77 • Fax +41 (0)22 727 07 78

accounts@dauidfeldman.com • www.davidfeldman.com



## IRELAND

See also lots 20461-62



20360

Three compartment box, gilded and sloped interior, the lid applied with a Celtic Cross, Stokes & Ireland, Birmingham 1895, 7.5cm wide, very fine and scarce

**300 - 500**



20361

Gold locket modelled as an envelope, front addressed (engraved) to Connie Rickinbon in Hartlepool, reverse with hinged flaps enamelled with a three leaf clover (Shamrock) spring and set with an amethyst thumbpiece, these open to reveal a frame for a portrait, engraved date "25/11/99", 2cm, very fine and rare

**300 - 500**

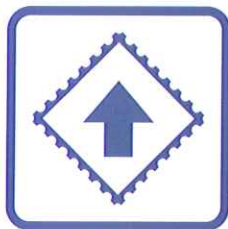
<b>20362</b>	81	Horses hoof with silver mounts and hinged lid, engraved "PADDY 1877-1906", one long dished compartment without division, possibly intended for matches, retailed by J.A.N stores maker's mark CL, Dublin 1906, 9.8cm high, mount loose, engraving a little worn, very unusual	<b>400 - 600</b>
--------------	----	---	------------------

## PORTUGAL



20363	<p>Portuguese silver inkstand, shaped oval on lions' paw feet, lidded inkwell, lidded sander and central pot held in cast openwork frames, cast openwork pen rest fitted to rear, maker's mark DPC, Porto 1853-61, 22.7cm wide, nuts holding pen rest missing, otherwise very fine</p>	600 - 800
-------	--	-----------

NB: pen not included see lot 20445



## Auction Bids

The auction bidding steps are as follows:

GB£ 50-100	GB£ 5	GB£ 500-1000	GB£ 50	GB£ 5000-10 000	GB£ 500
GB£ 100-200	GB£ 10	GB£ 1000-2000	GB£ 100	GB£ 10 000-20 000	GB£ 1000
GB£ 200-500	GB£ 20	GB£ 2000-5000	GB£ 200	GB£ 20 000-50 000	GB£ 2000

Bids in-between these steps will be adjusted accordingly to the next highest bid step. The bidder is bound by his/her offer until a higher bid has been validly accepted.



**Please *Airmail* your Bids as early as possible**

in the case of equal bids, the first bid received will take precedence.

**David Feldman SA**  
PHILATELISTS • AUCTIONEERS

175, route de Chancy ♦ P.O.Box 81 ♦ 1213 Onex, Geneva ♦ Switzerland  
Tel. +41 (0)22 727 07 77 ♦ Fax +41 (0)22 727 07 78  
accounts@davidfeldman.com ♦ www.davidfeldman.com



20364

A magnificent Portuguese six piece silver desk set of exceptional quality comprising five compartment stamp box, huge inkwell, paper knife, pen rack, pin tray and seal, all finely cast and chiselled in high Rococo style and each applied or embossed with a detailed Coat of Arms surmounted by a count's coronet, the stamp box (14.5cm wide) has two large and three small compartments with separate hinged lids and gilded interiors all set in a plinth with strong scroll and shell corners and central coat of arms; each piece struck with Lisbon 833 standard marks, the larger pieces also "LEITAO LISBOA 1893", superb and probably unique. (See enlarged photo, page 79)

10'000 - 15'000







EUROPEAN (UNSPECIFIED)

20365	81	Novelty wooden desk piece modelled as a well, comprising inkwell, pen wiper, pen rests and, under the roof, two sloped compartments for stamps and a dished one for nibs, walnut, 21cm high, fine and rare	200 - 300
20366	81	Two compartment box with separate hinged lids, chrome plated metal with red-brown agate panels to base and lids, 5cm, one lid panel reduced, otherwise fine, most attractive	100 - 200
20367	81	Three compartment box, chrome-plated metal with blue agate lid, base and ball feet, 9.2cm, lid panel cracked in one corner	100 - 200
20368	81	Two walnut boxes with lids painted with a bird on a branch, two compartments with a robin, and a single compartment with a finch, 6cm (larger), pin for closing hook missing	100 - 200
20369	81	Novelty wooden two compartment box modelled as the devil, black with red horns and mouth and glass eyes, 10cm, fine	100 - 200
20370	81	Two compartment box of upright form on spreading base, sloping lid applied with an enamel ladybird and engraved with a monogram, marked "925", 3.8cm high, small chip to enamel and dents to foot, but still a charming piece	150 - 200
20371	81	Book-form three compartment box in brass, modelled as an antique tome with gothic decoration and book clasp, 7.5cm, very fine	100 - 150
20372	81	Silver-plated rectangular box on four ball feet, the lid embossed with holly, loose internal dividers provide three sloped stamp compartments and one long one, maker's mark W in a circle, 6.9cm, fine	100 - 150
20373	83	Three cast brass boxes with two compartments, one casket shaped on ball feet, 9.3cm, another lower with openwork lid, and a third, smaller, with a cherub's head in relief, all fine	90 - 120
20374	83	Chrome-plated three compartment box with glass panel to lid and set on a glass base, sloped interior with dividers, 9cm, fine	80 - 100
20375	83	Flat silver box with finely engraved and engine turned decoration, interior gilded and fitted with three sloping compartments, thumbpiece set with a cabochon ruby, London import marks for 1905, 7.9cm, very fine	200 - 300
20376	83	A very similar box with the same marks, but different decoration and thumbpiece set with a cabochon sapphire, 7.9cm wide, very fine	200 - 300

SOUTH AMERICA

20377	83	Brazilian six compartment box, wood, the lid inlaid with different coloured woods to depict a tropical scene, inscribed "CURITIBA-PARANA", 13cm, fine and extremely rare (the only box we have seen)	200 - 400
-------	----	--	-----------

AFRICA

20378	83	Egyptian two compartment box, black-patinated copper with gilded highlights, the lid depicting the sphinx and pyramids, interior gilded, 7cm, slight wear to black patination, scarce	150 - 250
20379	83	Single compartment box of Egyptian design and theme in painted wood modelled as a walrus tusk with scrimshaw style decoration, marked PATENT, possibly Canadian, 10.3cm, some wear to painting at edges, rare	100 - 200



20359



20362



20365



20366



20367



20369



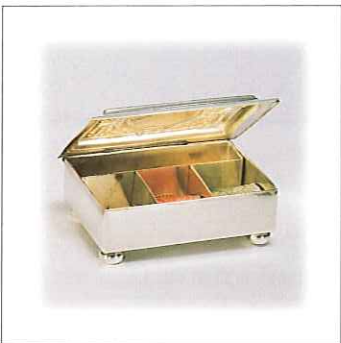
20368



20370



20371



20372



DFSA

## ASIA

## JAPAN

<b>20380</b>	83	Four compartment French lacquered papier-maché box, the lid depicting a Japanese crab fishing scene on a black ground, lid signed AB in monogram and "DEPOSEE", 10cm, fine and rare	<b>200 - 300</b>
--------------	----	---	------------------

<b>20381</b>	83	Deskpiece with three stamp compartments inside lid in pierced openwork floral frame, two inkwells, pen wiper, miniature portrait frame (containing picture of geisha) and pen rests, lid embossed with dramatic masks with gilded highlights, copper, 13.5cm, some wear to gilding otherwise fine	<b>200 - 300</b>
--------------	----	---	------------------



<b>20382</b>	<p>Two compartment cloisonné enamel box on shaped skirt foot, the lid decorated with a butterfly amid flowers on a speckled green ground, hinged lid, 8.5cm, very fine Provenance: Huguen collection</p>	<b>150 - 250</b>
--------------	--	------------------

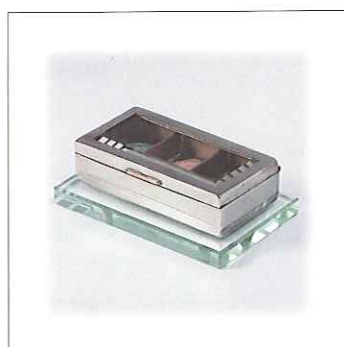


<b>20383</b>	Two compartment cloisonné enamel box on shaped skirt foot, the lid decorated with symbols on a dark blue ground, pull-off lid, 8.5cm, very fine	<b>150 - 250</b>
--------------	---	------------------

<b>20384</b>	83	Single compartment box, brass with gilded highlights and blackened ground, the lid decorated with birds and flowers, the sides with scenic vignettes, 3.4cm, minor losses to blacking but still very attractive	<b>100 - 200</b>
--------------	----	---	------------------



20373



20374



20375



20376



20377



20378



20379



20380



20381



20384



<b>20385</b>	85	Two compartment cloisonné enamel box, straight sided, hinged lid decorated with a stork and flowers, on a dark red ground, 6cm, fine	<b>100 - 200</b>
<b>20386</b>	85	Two compartment cloisonné enamel box, straight sides, hinged lid decorated with a butterfly and flowers on a dark red ground, 6cm, fine	<b>100 - 200</b>
<b>20387</b>	85	Two compartment box, the lid depicting a sailing boat in relief overlaid in silver and gold, 5.5cm, original black patination of copper body (shakudo) lost	<b>100 - 200</b>
<b>20388</b>	85	Silver two compartment box, the lid applied with a sinuously entwined dragon holding a flaming pearl, maker's mark a turtle within a triangle, 7.5cm, minor damage to base and release button missing from front, but lid very fine	<b>100 - 200</b>
<b>20389</b>	85	Square silver box, lid embossed with trailing flowers, sloped interior, character mark to base, 3.8cm, very fine	<b>150 - 200</b>
<b>20390</b>	85	Silver single compartment case with purse-type closure, lid applied with a samurai, marked inside with a character mark and "STERLING SILVER", 4.5cm, very fine	<b>100 - 200</b>
<b>20391</b>	85	Three single compartment boxes on spreading bases with bracket feet, copper-plated spelter, the first also silver-plated with gilded lid depicting an entwined dragon in high relief, plating a little worn, 5cm, the second with lid depicting a man surprised by a dragon in low relief, traces of silvering to lid, and a third example, corroded	<b>100 - 150</b>
<b>20392</b>	85	Wooden two compartment box, the lid inlaid with coloured woods depicting a waterside scene with Mount Fuji in the background, 7.7cm, small stains to lid	<b>80 - 120</b>
<b>20393</b>	85	Cigarette case, blackened steel with gold overlay, one side depicting a phoenix, the other a waterside scene with Mount Fuji in the background, 9cm, fine	<b>60 - 120</b>
<b>20394</b>	85	Silver two compartment box, the lid engraved with bamboo, character marks on base, 6.5cm, badly dented	<b>60 - 100</b>

## CHINA



<b>20395</b>	<p>Porcelain desk set, octagonal, dark blue ground with gilded pine tree motifs, panels to sides alternatively polychrome flowers or ochre scenes both on a white ground, standing on eight bracket feet, comprising two compartment stamp box with lid, two inkwells with lids and liners, pen rest, seal, empty cylindrical holder, central carrying handle, 18cm wide, fine and very rare</p>	<b>800 - 1'200</b>
--------------	--	--------------------



20385



20386



20387



20388



20389



20390



20391



20392



20393



20394



<b>20396</b>		Three compartment box in lacquered papier maché, the lid depicting three gentlemen taking tea on a red ground, 8.7cm, very fine	<b>150 - 250</b>
<b>20397</b>	87	Silver-plated trough shaped box on ball feet, the lid applied with filigree set with hardstones, one small and one long compartment, 7.5cm plating worn on base but lid fine, rare	<b>150 - 250</b>
<b>20398</b>	87	Brass box with relief enamelled decoration, the lid depicting a stag, a pagoda and a flamingo among trees, two stamp and one longer compartments, marked "CHINA" on base, 11cm, minor losses to enamel	<b>100 - 200</b>
<b>20399</b>	87	Four compartment lacquered papier-maché box, lid depicting buildings and people on a black ground, 14.4cm, wear and losses to decoration on lid, rare	<b>100 - 150</b>
<b>20400</b>	87	Enamelled copper box with relief decoration of flowers and butterfly to lid and to sides all enamelled in soft but vibrant colours, base and edges silver-plated, two small and one long compartments, 11cm, fine	<b>100 - 150</b>
<b>20401</b>	87	A moulded plaster box in the style of carved lacquer or cinnabar, two stamp and one longer compartments, 11.1cm, fine	<b>60 - 100</b>
<b>20402</b>	87	Single compartment box on bracket feet, brass with cloisonnée enamel in white and green to lid and to sides, marked "CHINA" on base, 3.5cm long, fine, plus spelter box with cast openwork floral lid, dished interior without division, marked "CHINA", modern, 8.3cm, fine	<b>50 - 100</b>
<b>20403</b>	87	Brass box with raised floral decoration on a blue enamel ground, two small and one large compartments, marked "CHINA" on base, 9.6cm, fine	<b>60 - 80</b>
<b>20404</b>	87	Two single compartment brass boxes with panels of raised decoration and enamelled grounds, marked "CHINA" on base, 3.8cm long, fine	<b>60 - 80</b>
<b>20405</b>	87	Single compartment box on bracket feet, silvered copper with raised enamelled decoration, the lid with a quiver among other motifs, marked "CHINA" on base, 3.7cm, plating worn	<b>40 - 60</b>
<b>THAILAND</b>			
<b>20406</b>	89	Two compartment box in brass with applied relief decoration in copper, the lid with vase and flowers, 5.5cm, and another slightly larger, in the same style, the lid with a bird and basket of fruit, 6cm, both hinges a little loose, rare	<b>100 - 200</b>
<b>20407</b>	89	Three single compartment boxes in brass with applied relief decoration in copper, the largest with base sloped to the front and lid depicting birds and a tree, 4.5cm, the second with slope sideways and lid depicting a bird and a sprig of flowers, 3.5, the third flat with applied sprig of flowers in brass, 3.5cm, minor faults	<b>100 - 200</b>



**20397**



**20398**



**20399**



**20400**



**20401**



**20403**



**20402**



**20405**



**Ex 20404**



**ROLLING AUCTIONS from MAY 2000**



<b>20408</b>	89	Two single compartment brass boxes, one wide with applied cast copper motifs, the lid with two birds and a flower, 5cm, minor dents, and another example, narrow, the cast applications in brass, the lid with a bird and grapes, 4cm, fine	<b>100 - 200</b>
		<b>OTHERS</b>	
<b>20409</b>	89	Three compartment box enereed in bone and decorated with flying swallows, possibly Indian, 9.7cm, lid warped, scarce	<b>100 - 200</b>
<b>20410</b>	89	Book-form case with flower embossed on one side and an Arabic character on the other, silver or silver-plate, lid missing, possibly not a stamp box, 2.6cm, nonetheless rare	<b>100 - 150</b>
<b>20411</b>		Silver-plated box containing a Turkish stamp, decorative hinged lid, 3.6cm, fine	<b>20 - 40</b>
		<b>STAMP DAMPERS</b>	
<b>20412</b>	89	USA: Bottle shaped with central wick, cast openwork applied foot and panels, Gorham Manufacturing Co., Providence RI, marked "STERLING", 8.5cm, very fine and scarce	<b>100 - 200</b>
<b>20413</b>	89	Tubular, one end flatened to accomodate felt, the other fitted with a seal, ornately embossed, Grey & Co., London 1893, 13.5cm, fine	<b>100 - 200</b>
<b>20414</b>	89	Silver novelty damper modelled as a tube of paint and finely engraved overall with scrolling foliage, Samson Mordan, London 1894, 9.4cm, superb and scarce	<b>250 - 350</b>
<b>20415</b>	90	Roller type, silver reservoir with crocodile skin effect, wooden roller, Lawrence Emanuel, Birmingham 1895, 5.6cm, fine	<b>120 - 180</b>
<b>20416</b>	90	Roller type, glass body encased in silver, wooden roller, Deakin & Francis, Birmingham 1903, 5.5cm, very fine	<b>100 - 150</b>
<b>20417</b>	90	Large roller-type with silver base and mounts to glass roller, J.C. Vickery, London 1906, 10.5cm, very fine and scarce	<b>150 - 250</b>
<b>20418</b>	90	Glass base and roller set on wooden base with gadrooned silver rim, Grey & Co., Chester 1912, 5.9cm wide, small chips to roller	<b>100 - 150</b>
<b>20419</b>	90	Glass body and roller set on spreading circular silver foot, maker's mark WJH, Birmingham 1913, 8.2cm wide, some small chips to glass	<b>100 - 150</b>
<b>20420</b>	90	A 'Humpty Dumpty' ceramic stamp damper, twist his cap (NB never try to lift it - you will break the mechanism!) and his tongue sticks out, moist from the wick connecting it with the water in the base, British registered design of 1932, 13cm high, stopper to well replaced otherwise very fine and scarce	<b>150 - 200</b>



**Please *Airmail* your Bids as early as possible**

in the case of equal bids, the first bid received will take precedence.

**David Feldman SA**

PHILATELISTS • AUCTIONEERS

175, route de Chancy ♦ P.O.Box 81 ♦ 1213 Onex, Geneva ♦ Switzerland

Tel. +41 (0)22 727 07 77 • Fax +41 (0)22 727 07 78

accounts@davidfeldman.com • www.davidfeldman.com



### **Payment by Credit Card**

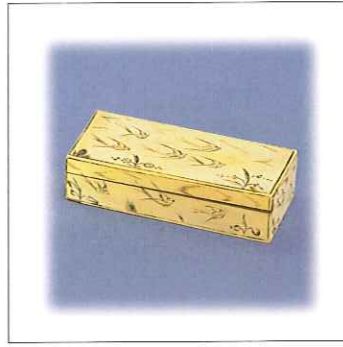
Please contact us in advance if you wish to make payment by means of any of the following Credit Cards :

**VISA, MASTERCARD, EUROCARD, AMERICAN EXPRESS and DINERS CLUB.**





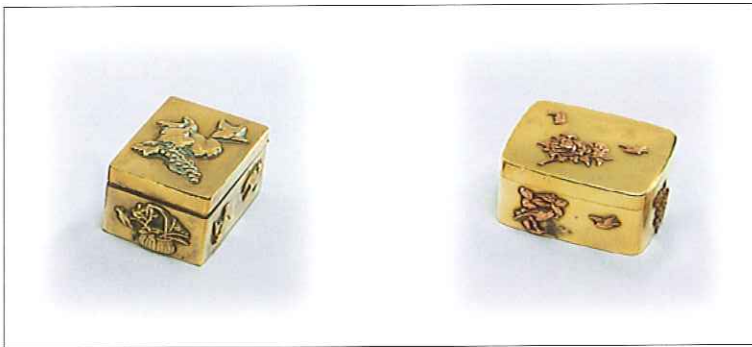
20406



20409



20407



20408



20410



20412



20413



20414



20415



20416



20417



20418



20419



20420



20422



20423



20425



20426



20427

## POSTAL BALANCES & SCALES



20421

Steelyard type modelled as a kneeling boy holding the beam aloft, a design registered by H.B. Wright in 1839, gilded brass or bronze on marble plinth, marked on base with maker and registration details, 14.5cm, letter pan missing otherwise fine and rare, ex. Huguen collection lot 414

400 - 600

20422

90 Candlestick-type spring balance by RW Winfield of Birmingham, design first registered in 1840 (base of column embossed with these details), cast foot and stamped pan in strong foliage style, brass, 15cm, very fine

**150 - 200**

20423

90 Sliding-beam steelyard balance, maker's stamp of Perry & Co. London, based on Turner's patent of 1871, Brass on wood base, 19.7cm wide, fine and rare

**300 - 500**



20424

Equal arm beam scales, the central stem modelled as a knight in armour, patinated bronze, English c1880, 17.5cm, very fine and rare, ex. Huguen collection lot 381 (Front cover)

800 - 1'200







20428



20429



20430



20431



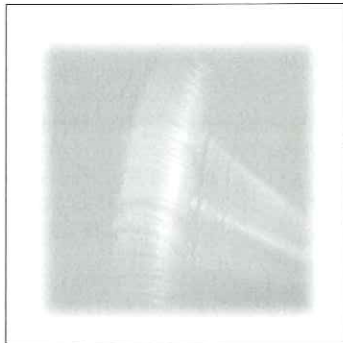
20433



20437



20438



DFSA



20435

Silver spring-balance letter scales, Levi & Salaman, Birmingham 1908, 7.8cm, minor wear to calibration tablet, otherwise very fine

**300 - 500**

## PENS & WRITING EQUIPMENT



20436

Magnifying glass with silver-coloured mounts, unmarked, rare blue marble handle, decorative, probably Italian, end 19th century, 10.5cm, fine and rare

**200 - 400**

20437

93 American silver fountain pen and propelling pencil with matching engine turned decoration, the pen marked "PATENT JAN 19 1915" and "SWANPEN, MABIE TODD & CO., NEW YORK, STERLING SILVER, MADE IN USA", 13cm (pen), very fine

**150 - 300**

20438

93 Porcelain desk set, comprising inkwell, pen tray and stationery holder, transfer printed with rural frolics in an 18th century style and painted with flowers, 19.3cm wide (inkwell), very fine, ex. Hugen Collection lot 333

**100 - 200**

20439

95 Paperknife and magnifying glass with moulded plaster (gesso) handles in the style of medieval carving depicting male and female warriors holding severed heads, 23.5cm (knife), modern, very fine

**100 - 200**



20439



20440



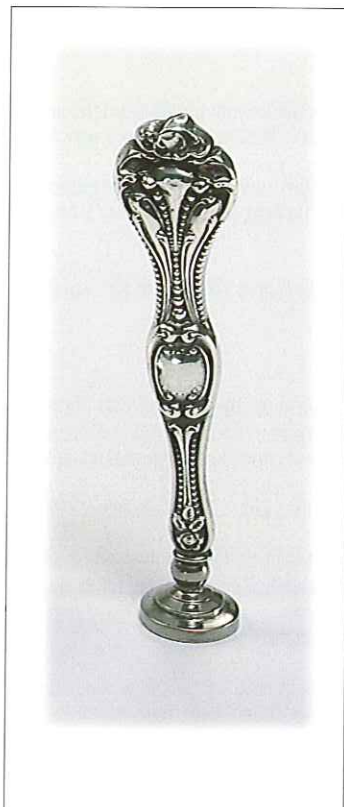
20442



20441



20443



20444



20445



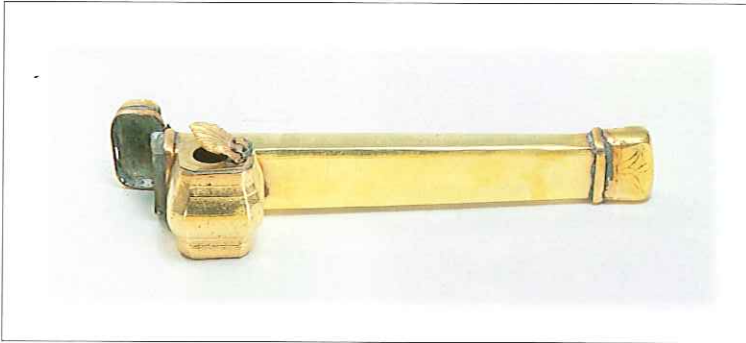
20446



20447



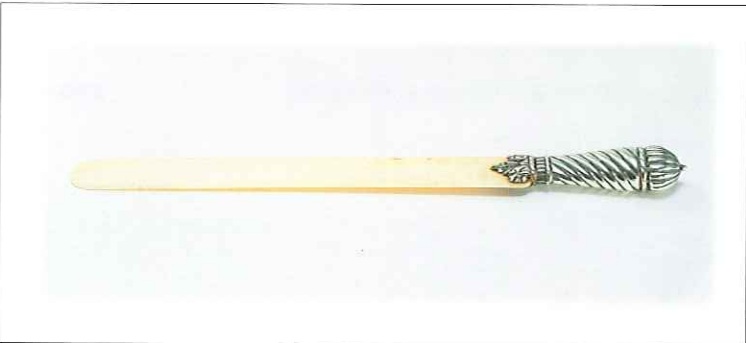
## INKWELLS



20448



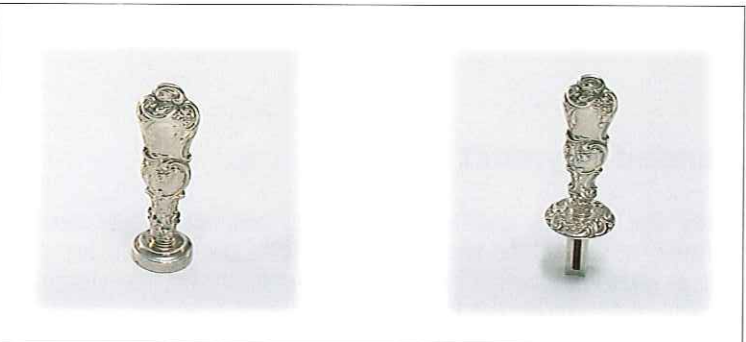
20450



20449



20451



20452



20453



20454



20455



## POSTAL & PHILATELIC MEMORABILIA



20461

A Post Office flintlock pistol by James Wilkinson & Sons of Pall Mall, maker's mark and proof marks to barrel, engraved GPO (General Post Office) on LEFT of handle, first half 19th century, 43cm long, fine and extremely rare survivor of the postal diligence.

Provenance: Dr. Stafford-Johnson (ex. General Post Office, Dublin, Ireland)  
(Note: This lot together with the next lot is an original pair)

4'000 - 6'000



20462

A Post Office flintlock pistol by James Wilkinson & Sons of Pall Mall, maker's mark and proof marks to barrel, engraved GPO (General Post Office) on RIGHT of handle, first half 19th century, 43cm long, fine and extremely rare survivor of the postal diligence.

Provenance: Dr. Stafford-Johnson (ex. General Post Office, Dublin, Ireland)  
(Note: This lot together with the previous lot is an original pair)

4'000 - 6'000



Lot	Photo	The Primrose Collection of Stamp Boxes	Est. GB£
20463	101	Novelty vesta (match) case modelled as a US Mail sack, silver-plated, American, 6.6cm, fine	100 - 200
20464	101	A set of silver condiment shakers modelled as pillar postboxes with enamelled collection tablets, large (8.20cm) for salt, smaller (7.2cm) for pepper, Hilliard & Thomason, Birmingham 1893, some salt corrosion, otherwise very fine and rare	300 - 500
20465	101	A brass needle case modelled as a postal weight engraved with postal rates and floral decoration, design registered in 1876 by Avery & Son, marked with these details, 5cm high, fine	100 - 200
20466	101	Silver savings box nicely modelled as 'pillar' posting box, maker's mark illegible, Birmingham 1905, 9.5cm high	200 - 300
20467	101	Pepper pot modelled as a post box, WM Hutton & Sons, Birmingham 1908, 6cm, very fine and scarce	150 - 250
20468	101	Novelty cigarette case modelled as an envelope, with enamelled George V 1 1/2d stamp with postmark in black for London 1933, engraved with owner's name and address as though written by hand, Turner & Simpson, Birmingham 1932, 11.7cm, superb condition and excellent quality	200 - 300
<b>COLLECTIONS</b>			
20469		A collection of fifteen stamp boxes, an English silver Ahronsberg patent double case (marks rubbed), three limoges porcelain boxes, seven oriental enamelled single compartment boxes and one two compartment, a large five compartment cast brass box, a smaller two compartment brass box and a painted wood example (Est.£ 400/600)	<b>Offer</b>
20470		Collection of seven boxes, six in wood including one veneered in mother-of-pearl, another inscribed "TIMBRES POSTE" " FONTAINBLEAU", another inlaid with coloured woods, and an openwork white metal box, faults, two not stamp boxes (Est.£ 50/100)	<b>Offer</b>
<b>MISCELLANEOUS</b>			
20471	102	A table match (vesta) case, sargophacus shaped on four cabriole legs, champlévé enamelled gilded brass, match stricker inside lid, 6.7cm long, very fine	150 - 250
20472	102	A Swiss watch in steel case within a silver-mounted display case, the silver mounts Birmingham 1920, 8.3cm	100 - 200
20473	102	Silver snuff box (not for stamps) octagonal with trick opening, embossed and chased with oriental motifs, character mark to base, 5.8cm, fine	150 - 200
20474	102	Pierced, rectangular holder on feet and with side handles, original purpose not clear, but probably had a coloured glass liner and was intended as a vase, but could hold letters, marked "STERLING" and "PATENTED APRIL 1st 1913", 11cm high, very fine	80 - 150
20475	102	A round silver-plated box with pull-off cover set with a mother-of-pearl panel painted with a hunting scene, a white metal box crudely engraved with birds in foliage, a modern cloisonné enamel box with pull-off lid, and another with base missing, none of these probably intended for stamps (4 items)	100 - 150
20476	102	Silver pill box with ribbed top, engine turned base and gilded interior, import marks for Army, Navy stores, London 1937, 1.5cm, very fine	40 - 60
20477	102	A silver table lighter, the bulbous body embossed with birds among foliage, base with pseudo marks, probably Dutch, 4cm high, fine	40 - 60
20478	102	Needle case, tubular, oval section, pull off lid, body embossed with daffodils and a cartouche engraved "Forrest", American, marked "STERLING" only, 8cm, one minor dent.	40 - 60
20479		No Lot.	
20480	103	Flat rectangular box with engine turned base and composition lid, probably not for stamps, London import marks for 1873	60 - 100



20456



20457



20458



20459



20463



20465



20464



DFSA



20466



20467



20468



20471



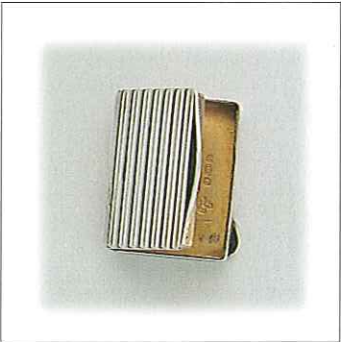
20472



20473



20474



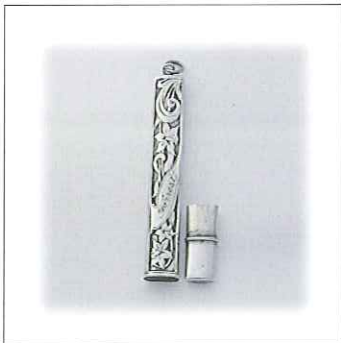
20476



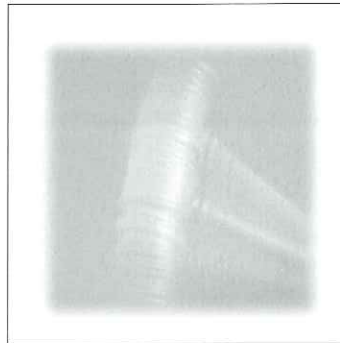
Ex 20475



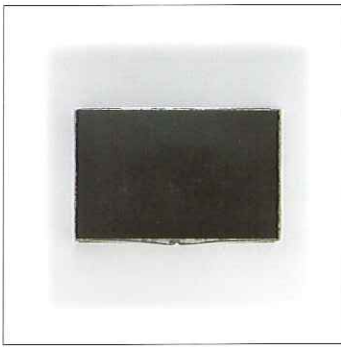
20477



20478



DFSA



Lot	Photo	The Primrose Collection of Stamp Boxes	Est. GB£
<b>20481</b>	103	An oval trinket or dressing table box, the lid and sides embossed with elfin faces amid foliage, Levi & Salaman, Birmingham 1890, 4.4cm high, fine	<b>80 - 100</b>
<b>20482</b>	103	Silver needle case, ornately embossed with scrolling foliage, H.J. Cooper, Birmingham 1901, 14cm (excluding chain), fine	<b>60 - 80</b>
<b>20483</b>	103	Red Cross: Book-form case with pivoted, gilded inner sleeve, the front with an enamelled red cross, Crisford & Norris, Birmingham 1904? (date letter worn), 2.9cm, very scarce	<b>200 - 250</b>
<b>20484</b>	103	An oval tobacco box of squeeze action form, ornately engraved, gilded interior, Smith & Bartlam, Chester 1907, 8.5cm, fine	<b>100 - 150</b>
<b>20485</b>	103	Oriental silver-plated box, the lid in carved red lacquer, inside of lid set with a mirror, so probably not intended for stamps, 4.5cm, very fine	<b>20 - 30</b>





## *The 'Gerald Sattin' Collection of writing implements & accessories.*

*Gerald Sattin's collection of early writing implements is considered the finest of its type in the world. It has taken Gerald 25 years to assemble this collection, most pieces of which truly belong in a museum. Some are the only examples known in private hands and even those which exist in museums are very few. All were acquired with an eye to quality and condition.*

*The collection commences in earnest with examples of early Penners with two Charles II silver specimens of different types, one circa 1670 with detachable inkwell and the other circa 1680 with fixed inkwell in the style of those in brass carried by Middle Eastern scribes of early times, but in silver. There is also a Georgian example of circa 1800 and a rare rectangular silver example of 1814 with fixed inkwell, wafer box and drawer for holding quills.*

*The collection has no less than three Irish Georgian silver travelling compendiums, and there is a rare George II silver etui faced with sharkskin. The presentation of fountain pens is unique, all of the experimental period commencing with an extremely rare example of French Louis XV period.*

*Other highlights include an English George II period silver pen, three Georgian silver Scheffer's Penographic fountain pens between 1820 and 1823 and one of John Jacob Parker's self-filling fountain pens in silver made by John Horton in 1832.*

*The dip pen section has a number of different designs including a superb Russian silver pen, modelled as a large feather with integral gold nib, Moscow 1879.*

*Two documentary doughty perpetual ruby-pointed pens, two examples of Georgian dip pens, and a beautiful Louis XV period presentation dip pen as a cast featherless quill.*

*Seldom has a collection of this calibre come onto the open market with so many rarities. Gerald Sattin always wanted others to enjoy the ownership of his collection in preference to it going intact to a museum. The chance has now been given to serious collectors by this auction. It is unlikely such a rare opportunity will come again, if at all.*

*David Feldman  
March 2000*

## Pens: The Gerald Sattin Collection

<b>20486</b>	107	Edwardian silver DIP PEN with patented Nib Ejector - design no. 8062/1908 by E. BAKER & SON, Birmingham 1907	<b>160 - 180</b>
<b>20487</b>	107	18ct Gold & tortoiseshell DOUGHTY'S PERPETUAL RUBY-POINTED DIP PEN, the shaft with gold and mother-of-pearl pique and reeded gold stem. The nib engraved "DOUGHTY FECIT", no hallmark, c.1825	<b>1'800 - 2'200</b>
<b>20488</b>	107	18ct Gold & tortoiseshell DOUGHTY'S PERPETUAL RUBY-POINTED DIP PEN, the shaft with gold dot pique, stem engine-turned, the nib engraved ROSE INVENTIT & JEWELr/ DOUGHTY FECIT, no hallmark, c.1825	<b>2'000 - 2'500</b>
<b>20489</b>	107	18ct Gold & tortoiseshell DIP PEN with Bramah-type quill nib holder, with amethyst-set gold seal terminal and shaft with floral & foliate gold pique, no hallmark, c.1830	<b>750 - 850</b>
<b>20490</b>		Russian silver QUILL PEN as a large feather with integral gold nib, Moscow 1879, 11 4/5 inches long	<b>1'000 - 1'200</b>
<b>20491</b>	107	Silver ARCHITECT'S TWIN MAPPING PEN in original case, with TWO pens, one on top of the other and joined by a silver band, with adjusting steel screw one terminal a planishing tool and the other a removable pencil, by JOHN JAGO, London 1808	<b>1'600 - 1'800</b>
<b>20492</b>		PORCUPINE QUILL & SILVER QUILL HOLDER with spring-action nib locking device and seal terminal, by GABRIEL RIDDLE, London c1838	<b>160 - 180</b>
<b>20493</b>		Longmore & Co. patented nib holder with ivory shaft, marked J. Longmore & Cos., patent London, no hallmark, c1843	<b>200 - 240</b>
<b>20494</b>	107	Louis XV-period hallmarked PRESENTATION DIP PEN as a cast featherless quill with acorn finial, shaft engraved M:B a P:T 26 d 9m 1750, Paris countermark for 1762-68, Paris c1750	<b>2'000 - 2'500</b>
<b>20495</b>		Silver HAND QUILL HOLDER with diamond finger-ring, engraved cuff, open finger-tips to accept a quill nib, ivory shaft impressed "S.MORDAN /Augt 3 1842 / No 1390", no hallmark, c1842	<b>800 - 1'000</b>
<b>20496</b>	107	18ct Gold & tortoiseshell DIP PEN with 18ct gold spring holder and locking device, the tortoiseshell shaft with gold pique, by S.MORDAN & CO., no hallmark, c1840	<b>600 - 800</b>
<b>20497</b>	107	Silver STYLUS with writing point and smoothing paddle, no hallmark, probably 7th Century, c.680 AD	<b>300 - 500</b>
<b>20498</b>	107	Lead pencil & quill holder with reeded barrel, the terminal of the sliding pencil reversing into the barrel to expose the quill nib, by JOHN JAGO, London 1797	<b>400 - 600</b>

**20499**

Sharkskin-bound etui complete with steel tweezers and earscoop, steel scissors with folding silver handles, silver dividers with engraved arms and steel points, gold nib to silver shafted pen with reversible pencil terminal, aide memoir & ruler on two ivory leaves, steel bodkin, steel knife blades & fork each with screw terminal, threaded silver handles holding a steel nutmeg grater and steel corkscrew, and in the base a hidden compartment containing a silver inkwell and sander, no hallmark, c1730-40

**8'000 - 10'000****20500**

107 Pencil holder with ribbed silver barrel, die-cast top inset with a vacant seal, plain slide band, by JOSEPH TAYLOR, Birmingham 1825

**250 - 350****20501**

107 18ct Gold pencil holder, dip pen & ruler, barrel graduated to 4 inches, cap covers a hobnail seal, pencil slides through the hollow of the gold nib probably by A.J.STRACHAN, London 1807

**800 - 1'000**



20487 20488



20489 20496



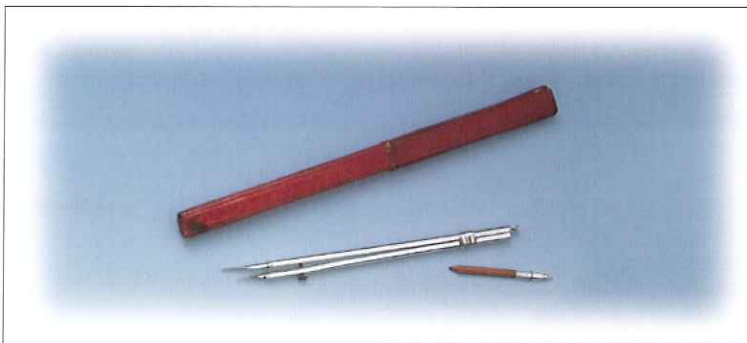
20494



20501/498/500/497



20508/504/506



20491



20510/511





- |              |     |   |                      |
|--------------|-----|---|----------------------|
| <b>20502</b> |     | Louis XV-period 18ct gold & mother-of-pearl fountain pen made on the Bion Principle, the gold ink stopper mounted with a porte Crayon, gold nib with French hallmark for c1768-74   | <b>7'000 - 9'000</b> |
| <b>20503</b> |     | John Jacob Parker's self-filling fountain pen barrel marked PARKER'S PATENT/JOHN HORTON/186, by John Horton, Brimingham 1832  | <b>3'000 - 4'000</b> |
| <b>20504</b> | 107 | Scheffer's patented "Penographic" fountain pen with plain barrel marked W. ROBSON & CO. PATENTEES/LONDON/2681, by William Robson, London 1822   | <b>3'000 - 4'000</b> |
| <b>20505</b> | 109 | George II fountain pen in original sharkskin case, the spiral fluted barrel in 4 sections, the vacant seal terminal over a Porte Crayon and with silver nib, no hallmark, c1750   | <b>5'000 - 7'000</b> |
| <b>20506</b> | 107 | Scheffer's patented "Penographic" fountain pen mounted with a Pencil Holder, the plain barrel marked W.ROBSON & CO. PATENTEES/LONDON/2945, by William Robson, London 1823   | <b>4'000 - 6'000</b> |
| <b>20507</b> | 109 | George III silver & glass fountain pen, the glass barrel with silver mounts scratch engraved with debased acanthus leaves and with silver mounted cork stopper, no hallmark, c1780  | <b>2'000 - 3'000</b> |
| <b>20508</b> | 107 | Scheffer's patented "Penographic" fountain pen with plain barrel marked W.ROBSON & CO. PATENTEES/LONDON/1907, by John Cottrill, Birmingham 1820   | <b>3'000 - 5'000</b> |
| <b>20509</b> |     | Irish silver travelling writing compendium in 3 sections: Quill holder, inkwell and pull-off cover with silver mounted cork stopper, one side of flattened case graduated for a 6 inch ruler, the other side engraved with a conversion Table between Irish pounds and English guineas to 1000 guineas, no hallmark, dated 1793   | <b>3'000 - 5'000</b> |
| <b>20510</b> | 107 | Irish silver travelling writing compendium in 4 sections: quill holder, inkwell, pull-off base with seal and pull-off cover with silver link chain to silver mounted cork stopper, one side of flattened case graduated for a 6 inch ruler, and the other engraved with a conversion table between Irish pounds and English guineas to 1000 guineas, no hallmark, c1800 | <b>3'000 - 5'000</b> |

- |              |     |  |                      |
|--------------|-----|--|----------------------|
| <b>20511</b> | 107 | Irish silver travelling writing compendium in 3 sections: Quill holder, inkwell with silver mounted cork stopper and cover to inkwell, each flattened section spiral fluted between oval raying bright-cut panels and bands of engraved leaves, no hallmark, c1775 | <b>3'000 - 4'000</b> |
| <b>20512</b> |     | Silver penner the shaft, with reversible silver nib, screwing onto a flattened oval inkwell, by J.L., c1800  | <b>1'000 - 1'500</b> |
| <b>20513</b> |     | Sharkskin & gold travelling etui of tubular form with gold collar and hinged cover to quill holder and base with gold collar and hinged cover to inkwell with glass liner, no hallmark, c1800  | <b>800 - 1'000</b>   |



- 20514** Louis XIV silver writing etui faced with sharkskin, the hinged cover with silver pin decoration, and containing three silver nibs with screw bases and each screwing onto a threaded shaft of ebony with a *Porte Crayon* on the reverse, the base of the etui with an inkwell and its base with a separate compartment for wafers, French hallmark for Paris. c1684-87





20515

Charles II silver penner with a trefoil column with cover and screwing onto base of inkwell (if required for hand holding) and containing quills, maker's mark IC, London c1670

**10'000 - 15'000**



20516

Charles II silver travelling penner, the quill case with two quill compartments joined to the side of a silver inkwell, the quill case with a Scottish seal on its base and the inkwell with pull-off cover and lid with 3-lug standaway hinge, all scratch engraved and with contemporary initials, maker's mark WB, c1680

10'000 - 15'000





# Conditions of Sale English

## BIDDERS - VERY IMPORTANT

- 1. "OFFER" indicates that the estimation is left to the discretion of bidders in view of the quantity, special character or quality of a lot.
- 2. Bids should be, in most cases, above the estimate to have a good chance of success.
- 3. If you cannot attend the auction personally, please send us your bids as early as possible. All bids are treated with the greatest discretion and in your best interest, as if you were in the auction room. The knocking down of a lot will be done at the lowest possible price, and not necessarily at your highest bid. For example, on a lot Est. GB£ 200, you bid GB£ 400, and the best bid beneath yours is GB£ 300, you will obtain the lot at the next bid which is, in this case, GB£ 320.
- 4. The auction takes place in many languages, depending on the attendance of the room.

## CONDITIONS OF SALE

This auction takes place publicly. Participation means acceptance in full of the following conditions as well as any rights and obligations arising therefrom. These same conditions also apply to all transactions in auction lots taking place outside the sale. DAVID FELDMAN S.A., organiser of the auction, acts as an agent only and is not liable for any default(s) of purchaser(s) and/or vendor(s).

### 1. THE AUCTION LOTS ARE OFFERED

- 1.1 **As presented in the auction catalogue** Lots are meticulously described and with the greatest care, however without responsibility. Photographs count as part of the description with regard to the margins, perforation, centering, postmarks and all other visible attributes. The description of the lots mentions if the items are signed by recognised experts and/or accompanied by expert certificates.
- 1.2 **As viewed** Before and during the auction sale, all lots may be examined as scheduled in the auction catalogue. Persons attending the auction and/or who have viewed any lots before the auction and/or bidders' representatives and auction agents are understood to have examined all lots which they purchase and accept them as they are at the moment of the knocking-down and not necessarily as described.

### 2. AUCTION BIDS

2.1 The auction bidding steps are as follows:

GB£ 50 - 100	GB£ 5	GB£ 2000 - 5000	GB£ 200
GB£ 100 - 200	GB£ 10	GB£ 5000 - 10000	GB£ 500
GB£ 200 - 500	GB£ 20	GB£ 10000 - 20000	GB£ 1000
GB£ 500 - 1000	GB£ 50	GB£ 20000 - 50000	GB£ 2000
GB£ 1000 - 2000	GB£ 100	GB£ 50000 - 100000	GB£ 5000

Bids in between these steps will be adjusted accordingly to the next highest bid step. The bidder is bound by his offer until a higher bid has been validly accepted.

2.2 DAVID FELDMAN S.A. is authorised to bid for clients in accordance with their bidding instructions. DAVID FELDMAN S.A. may also bid on behalf of vendors in cases where reserve prices have been fixed. In these cases, the vendor is treated as a buyer and the auctioneer shall bid on his behalf up to reserve prices.

2.3 Written bid orders received by DAVID FELDMAN S.A. before the auction sale have priority over room bids in every case. Clients giving bidding instructions to DAVID FELDMAN S.A. may make alternative offers and/or limit the total of their expenditure in advance. Bids marked "BUY" are considered as up to ten times the printed estimate price. Bids must be in GB£. Bids made in other currencies will be converted into GB£ at the market rate of the day of receipt by DAVID FELDMAN S.A. Bids are standing and hold good for at least 60 days from the auction period. DAVID FELDMAN S.A. reserves the right to invoice bidders up to the end of the 60 day period, payment being due immediately.

### 3. THE AUCTION

- 3.1 The auction will be held in London under the regulations of the supervising authority.
- 3.2 **Prerogatives of David Feldman S.A.** DAVID FELDMAN S.A. may withdraw, group differently, divide or refuse to knock down any lot of this sale. DAVID FELDMAN S.A. reserves the right to refuse any bid orders and/or to refuse admittance to the auction room, at its discretion, to anybody whosever DAVID FELDMAN S.A. cannot be held responsible for any physical accident that may occur on the premises of the auction.
- 3.3 **Bidders' representatives and auction agents** Any person bidding for the account of a third party is fully liable for any obligation arising from this auction. This responsibility is notably applicable for the verification of the condition and for the payment of bought lots.
- 3.4 **Adjudication: Each lot is sold on behalf of the respective owner to the highest bidder. In addition to the sale price, the buyer pays a commission of 15%. On the fall of the gavel, liability for the knocked-down lots passes to the bidder whose bids have been accepted. The lots are given to the buyer when the sale price and commission are paid in full.**

### VAT (Sales Tax)

A special leaflet detailing the VAT regulations concerning this auction is enclosed, and further copies available on request.

- 3.5 **Payment:** In the case of buyers attending in person, sale price plus commission are due for immediate payment in GB Pounds against delivery of the lots. Payment in foreign currencies is accepted at the rates of exchange of the day as quoted by one of the principal banks. The mail bidders who were successful and the buyers attending the auction in person with whom it has been expressly agreed that they pay after the sale, are due to pay the sale price and the commission on receipt of the auction invoice. In these cases, DAVID FELDMAN S.A. keeps the adjudicated lots which are delivered to the buyers on full settlement of their account. Delivery of the purchased lots by post or any other means if instructed by the buyer including cost of normal transit insurance cover is at the expense of the buyer.
- 3.6 **Special extended payment facility** DAVID FELDMAN S.A. may offer a special extended payment facility for buyers. In these cases, the buyer may choose to pay a minimum of 25% of the total invoice on receipt, and the balance over a maximum period of 6 months, paying an equal instalment at the end of each month. Interest plus charges of 1% is debited to the buyer's account at the end of each month from the auction date. When the special extended payment facility has been granted, the buyer understands that any claims regarding his purchases must be made within 30 days of the auction sale date, even though the lots may be held by DAVID FELDMAN S.A. awaiting full settlement of the account. Until delivery, all lots may be examined by their respective buyers at the offices of DAVID FELDMAN S.A.
- 3.7 **Pledge:** Until full settlement of the account, the buyer grants to DAVID FELDMAN S.A. a pledge on any and all properties held by DAVID FELDMAN S.A., acquired prior to, during and/or after this auction. This pledge secures the repayment of any amount due in principals, interests, commissions, costs and other possible fees. DAVID FELDMAN S.A. is entitled, but not obliged, to realise freely the pledge assets without further formalities and without previous notice if the buyer is in default with the payment of his debts or with the fulfillment of any other obligation hereunder. For this purpose, DAVID FELDMAN S.A. is not bound to comply with the formalities of the Federal Law dealing with actions for debt and bankruptcy proceedings; in addition, DAVID FELDMAN S.A. may choose to institute or go on with the usual proceedings without having beforehand sold the pledged goods and without having moreover given them up.

### 4. GUARANTEE

- 4.1 **Extent of the guarantee** Subject to paragraph 4.3 below, the authenticity of all philatelic items sold in the auction is guaranteed for a period of 30 days from the auction date, with the express exclusion of any other fault(s). Any reclamation regarding authenticity must come to the notice of DAVID FELDMAN S.A. on the delivery of the lots but at the latest within 30 days from the auction date. Before delivery, which may take place after the 30 days period, the lots purchased may be examined at the Geneva offices of DAVID FELDMAN S.A. The buyer whose reclamation is made after 30 days from the auction date loses all rights to the guarantee. Such reclamation will not be valid. If an extension of the period is required in order to substantiate the claim with an expertise, a request for such extension must be made to DAVID FELDMAN S.A. within 30 days of the auction date. No request for extension will be considered beyond this 30 days period. The results of the expertise for which an extension was agreed must come to the notice of DAVID FELDMAN S.A. within 3 months of the auction date. No further extension of the period will be considered without the express agreement in writing of DAVID FELDMAN S.A. Only claims, expertise results or other details which are made within the agreed periods will be valid.
- 4.2 **Expertise and counter-expertise** Should the authenticity of a lot be questioned, the buyer is obliged to provide an expertise or counter-expertise from a prominent expert in the field, justifying the claim. If a stamp is found by a recognised expert taking financial responsibility for errors to have been forged, he may mark it accordingly. Consequently, the marking "FALSCH" (forged) is not considered an alteration. In the case of such reclamation, DAVID FELDMAN S.A. reserves the right to request, at its own discretion, one or more further expertises. All expertise and relative charges accrue to the vendor's account in the case of a justified claim, or to the buyer's account if the claim is not justified. In the case of a justified claim, the lot is taken back and the adjudication price plus the commission are refunded to the buyer. In the case of delayed payment due to expertise agreed by David Feldman S.A., interest is charged at 50% the standard rate for all cleared lots, if David Feldman S.A. has not agreed then full interest is due.
- 4.3 **Exclusions** Lots described as collections, accumulations, selections, groups and those containing duplicates, cannot be the subject of any claim. Claims concerning lots described as a set or groups of sets containing more than one stamp, can only be considered under the terms of paragraph 4.1 above if they relate to more than one third of the total value of the lot.
- 4.4 **Late Payment** If the payment of the adjudicated price plus commission due by the buyer is not made within 30 days of the date of the auction, DAVID FELDMAN S.A. reserves the right to cancel the sale and dispose of the lot(s) elsewhere and/or to make a recourse to any legal proceedings in order to obtain payment of the amounts due as well as for any incurred damages and losses. An annual charge on overdue payment of at least 16% plus expenses incurred is chargeable on any outstanding amount after 30 days of the date of the auction. The buyer who is in default in any way whatsoever has no right of claim under any circumstances.

### 5. APPLICABLE LAW AND JURISDICTION

This auction as well as any rights and obligations arising therefrom shall be governed exclusively by English law. In every case, DAVID FELDMAN S.A. shall also be entitled, at its discretion, to sue any buyer in default at his place of residence; in such case, English law shall remain applicable.