



MAURITIUS

Supplement to Auction Catalogue

November 3, 1993

Reference information used in compiling and classifying
the Primitives Issues

David Feldman SA

PHILATELISTS-AUCTIONEERS

175, route de Chancy • P.O. Box 81 • CH-1213 Onex, Geneva, Switzerland
Tel. (022) 757 39 01 • Fax (022) 757 49 57

Mauritius

The villages (upper case) and areas (lower case) served by Lambert's inland post routes:

- 1 Plaines St Pierre, Rivière Noire and Grand Savane
- 2 Moka and Plaines Wilhems
- 3 Grand Port and Rivière de la Chaux
- 4 Pamplemousses, Moulin à Poudre and Bayes aux Tortues
- 5 Rivière du Rempart and Poudre d'Or
- 6 Rivière des Calebasses, Nouvelle Découverte, Quartier Militaire and Camp de Masque
- 7 Rivière Sèche, Trois Islots and Grand Rivière Sud-Est



Supplement to the Auction Catalogue

MAURITIUS

Classic Postage Stamps and Postal History

Wednesday, November 3, 1993
at 14.00 h.

Offer for Sale by Public Auction
at the Hotel International, Zurich-Oerlikon

Including the entire collection formed by
Hiroyuki Kanai, F.R.P.S.L.

which has won the highest distinctions at the following International Exhibitions:

Grand Award for Best Entry of British Commonwealth (London 1970)
International Grand Prix (Paris 1975)
Large Gold Medal (Philadelphia 1976)
Large Gold Medal (Amsterdam 1977)
Grand Prix d'Honneur (Toronto 1978)

Part of the collection has been exhibited by special invitation in the Court of Honour
at the following International Exhibitions:

Vienna 1965, Amsterdam 1967, Prague 1968, New York 1971, Tokyo 1971,
Prague 1978, New Delhi 1980, London 1980.

The famous "Post Office" cover to Bordeaux
bearing the complete set of "Post Office" stamps was exhibited by invitation
in the Court of Honour at the following International Exhibitions and awarded a special prize:
Paris 1989, Geneva 1990, Granada 1992.

Special invitations have presently been received to exhibit the following "Post Office" items
in the Court of Honour:

One Penny and Two Pence unused: Taipei, August 1993, Bangkok, October 1993
One Penny Ball Invitation Cover: Paris, September 1993, Museum exhibition of World Rarities

David Feldman SA

PHILATELISTS - AUCTIONEERS

175, route de Chancy • P.O. Box 81 • CH-1213 Onex, Geneva, Switzerland
Tel. (022) 757 39 01 • Fax (022) 757 49 57

CONTENTS

	Pages
Mauritius – Introduction to the Kanai Collection_____	5
Post Paid – Introduction_____	7
Simplified Key to Identify the Plate Position_____	8
Post Paid, 1d (Earliest)_____	10
Post Paid, 1d (Early)_____	16
Post Paid, 1d (Intermediate)_____	22
Post Paid, 1d (Worn)_____	28
Post Paid, 1d (Latest)_____	34
Post Paid, 2d (Earliest)_____	40
Post Paid, 2d (Early)_____	46
Post Paid, 2d (Intermediate)_____	52
Post Paid, 2d (Worn)_____	58
Post Paid, 2d (Latest)_____	64
Lapirot – Introduction_____	71
Lapirot 2d, Key to Identify Plate Position_____	72
Lapirot 2d, Key to Identify Impression_____	74
Sherwin – Introduction_____	86
Dardenne – General Notes and Identification of Varieties_____	87

© Copyright 1993 by David Feldman SA, Geneva

NOTE: Copyright for newly published academic details, identification keys, reference tables and drawings for impressions, platings and varieties as published in this supplement belongs to Arnold J. B. Rudge and is reproduced by kind permission.

David Feldman SA

PHILATELISTS - AUCTIONEERS

175, route de Chancy • P.O. Box 81 • CH-1213 Onex, Geneva, Switzerland

Tel. (022) 757 39 01 • Fax (022) 757 49 57

MAURITIUS

Introduction to the Kanai Collection and Supporting Documentation

by Arnold J. B. Rudge

Knowledgeable collectors of the Mauritius "Primitive" issues regard the past great named sales of these stamps, such as those of Ferrary, Hind, Caspary, Burrus, Stevens, Amundsen, Dale and Lichtenstein and the collection of Kanai with great respect. This is due, not only to their achievement in assembling the collections themselves, but also for their careful stewardship of these stamps while in their care. Consequently, present day collectors, in their turn, have the opportunity of owning and enjoying the stamps of these remarkable issues. Unfortunately, a few significant items have not passed through "the care" of the collections of this select group of "giants" of Mauritius philately and the whereabouts of a few of these "lost" stamps has been unknown for about 60 years or more.



However, most of the unique pieces and items of extreme rarity that have been available this century, and remaining in the public domain, are brought together here. The present collection will be seen to have a remarkable pedigree of provenances from these great collections. Its assembly is a unique achievement and a singular opportunity for the serious collector – one that is unlikely ever to occur again. This collection, above all others, will undoubtedly be viewed now and forever with the veneration it truly deserves.

The determination of the state of impression and plate position of the "Post Paid" and "Lapirot" issues is one of the most difficult areas of philately and no reliable method to identify all states of impression of these issues has been available. Using the wealth of material in the present collection and material available to me from other sources, I have attempted, in the Supplement to this Catalogue, to provide a method in the form of keys, tables and drawings, with which to identify both plate positions and impressions of these issues.

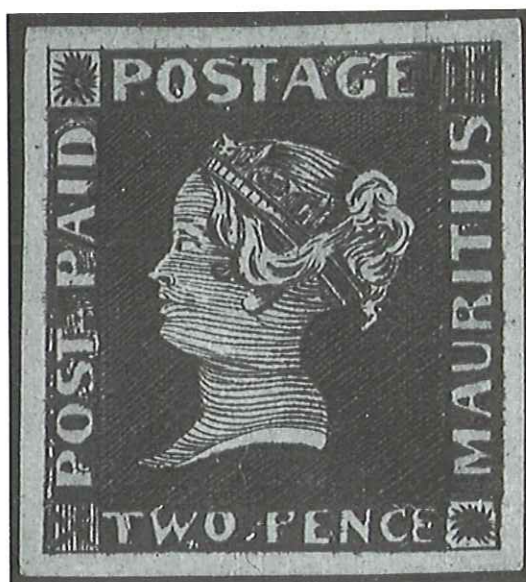
Additionally, details have been provided to aid the identification, and therefore the way forward to rewarding studies, of varieties of the "Dardenne" issue and examples of the retouched plate of the "Lapirot" issue.

It is hoped that this new documentation will provide collectors of these issues with the surety that they themselves may, by using the guidelines presented here, be able to correctly classify stamps in their possession and in prospect for purchase. In so doing it is hoped they will obtain a greater understanding and enjoyment of the stamps of these unique issues.

April, 1993

Arnold J. B. Rudge is a member of the Royal Philatelic Society, London and has devoted many years studying the classic issues of Mauritius. He recently began a series of articles in The London Philatelist detailing his researches on the primitive issues and intends to publish his completed work shortly. He studied every stamp in the Kanai collection in detail and has greatly assisted in the confirmation of the correct classifications of each item by applying the data presented in this Supplement to the main Catalogue.

The Post Paid Issue



Denomination:	One Penny and Two Pence.
Engraver and printer:	Joseph Osmond Barnard at Port Louis, Mauritius.
Printing Format:	Engraved on two copper plates (previously used to print advertisements of the Grand Hotel d'Europe, Port Louis) one for each value so that each contained four horizontal rows of three stamps. The twelve stamps on each plate were engraved individually so that each has differences in its engraving. This enables every stamp to be identified as originating from one of the twelve positions on its plate.
Date of Issue:	(May) 1853 for the One Penny. June 1848 for the Two Pence.
Perforation:	Imperforate.
Paper:	Variable – Some of the types of paper used in earlier issues did not readily take the printing or cancellation inks. This gave rise to "sticky" prints or damage to the surface of the stamp where the cancellation ink flicked off carrying surface fibres of the stamp with it.
Impressions:	Five states of impression of each value are recognised.

Note 1. The following information is based on material and photographs currently available. It is anticipated that the key will be further refined and improved when additional material comes to light.

Note 2. Not every feature listed in the key for a particular impression will be found in all stamps falling within this impression when the stamp in question nears a borderline state. However, the majority of features will be present.

Note 3. Wear of the plate was a gradual process so that in printing these stamps one state of impression passed imperceptibly to another. Consequently there is a point where the wear on the plate was such that the printed stamp was exactly on the boundary of two states of impression. The few stamps in this category cannot be correctly assigned to either state.

Simplified Key to Identify the Plate Position

A. One Penny

Notes: 1. Where cancellations and or wear obscure the key features listed below the more detailed keys listed elsewhere should be consulted.
2. The key **MUST** be read starting at feature 1 and progressing by a process of elimination to arrive at the identified plate position.

1.	(A) Front point of base of bust points to foot of "P" in "POST", if no, then: (B) Basal line of bust very upwardly arched, if no, then: (C) Tip of nose opposite foot of "P" in "PAID".	If yes, go to 8. If yes, go to 5. If yes, go to 2.
2.	"E" of "POSTAGE" raised at base, and either: (A) Chignon short and not extending below the level of "R" in "MAURITIUS". or (B) Chignon very pointed (not hooklike) and directed at "NN" of "PENNY", and extending below the level of "R" in "MAURITIUS".	 = POSITION 1 = POSITION 4 If neither, go to 3.
3.	Very short top left limb of "T" in "POST", centre arm of "E" in "POSTAGE" thick and stubby, top arm not thin. "O" in "ONE" is oval.	 = POSITION 10 If no, go to 4.
4.	Top arm of "E" in "POSTAGE" very thin, centre arm very short and lower arm normal. "O" in "ONE" roundish.	 = POSITION 7
5.	Vertical (not sloping) edge of front of neck aligned exactly above centre of "E" in "ONE" and either: (A) Loop of "P" and lower curve of "S" in "POSTAGE" not markedly extruded. or (B) Loop of "P" and lower curve of "S" in "POSTAGE" are markedly extruded.	 = POSITION 5 = POSITION 2 If neither, go to 6.
6.	Spike of colour extends upwards into NW "box" near its left margin and so links corner ornament device with coloured area surrounding "POST PAID". Tops of "T" and "E" raised above other letters in "POSTAGE".	 = POSITION 11 If no, go to 7.
7.	"A" in "MAURITIUS" inclined to right. Left foot of "A" in "PAID" is below loop of "P" (not so marked in "Earliest" examples).	 = POSITION 8
8.	Mouth slopes upwards to corner (not so apparent in "Earliest" examples). Small "P" in "POST" and upright very short.	 = POSITION 3 If no, go to 9.
9.	Tip of point of bust centred over gap between "O" and "N" in "ONE" and Either (A) Line of front edge of neck is positioned over right side of "E" in "ONE", "POST PAID" has large letters. or (B) Upper part of line of front edge of neck is positioned above centre of "E" in "ONE". Right side of "O" in "ONE" markedly fatter than left side.	 = POSITION 12 = POSITION 9 If neither, go to 10.
10.	Tip of point of bust does not extend in front of "N" in "ONE". Front edge of neck has outward curve. Loop of "P" in "POST" is slightly extruded.	 = POSITION 6

B. Two Pence

Notes: 1. Where cancellations and or wear obscure the key features listed below the more detailed keys listed elsewhere should be consulted.
2. This key MUST be read starting at feature 1 and progressing by a process of elimination to arrive at the identified plate position.

1.	"O" for "C" in "PENCE" = "PENOE" variety (note, "latest" impressions of positions 2 and 4 may also show "O" for "C"). = POSITION 7	If no, go to 2.
2.	Point of chin exactly opposite foot of "T" in "POST" and corner of mouth extends past line of nostril. There is no indentation where neck meets chin.	If yes, go to 3. If no, go to 7.
3.	Rear basal end of bust positioned over right upright of "N" in "PENCE". = POSITION 6	If no, go to 4.
4.	Large "T" in "POSTAGE", the upright is indented on both sides where it joins the cross-piece. Rear outline of bust from nape of neck to "heel" of bust appears humped. Nose rounded (not in "Early" or "Earliest" impressions). = POSITION 9	If no, go to 5.
5.	Longish top to "T" in "TWO". Flat top to "P" in "POSTAGE". A curved line of colour separates rear "heel" of bust from its tip (not in Worn examples). = POSITION 3	If no, go to 6.
6.	"T" of "TWO" has very short top stroke and is closely sandwiched between "W" in "TWO" and SW corner ornament. = POSITION 12	
7.	Corner of mouth does not extend past line of nostril.	If yes, go to 8. If no, go to 10.
8.	SE corner ornament positioned low in "box" with lower arms of device all touching lower frame line, left lateral arm joins left frame of "box". Large "D" in "PAID". = POSITION 4	If no, go to 9.
9.	Top of "O" absent and flat top to "P" in "TWO PENCE". = POSITION 1	
10.	Right top limb of "T" in "POSTAGE" long and narrow and tapering compared with short and fatter left limb. = POSITION 10	If no, go to 11.
11.	Right point of base of bust positioned above first "E" of "PENCE". No indentation where neck meets chin.	If yes, go to 12. If no, go to 15.
12.	Centre arm of first "E" in "PENCE" short and nearer the lower arm than the upper, lower arm thin. = POSITION 8	If no, go to 13.
13.	"E" of "PENCE" "normal" and equally spaced between "P" and "N". Indentation of colour at left side of join between short top and upright of "T" in "POSTAGE". = POSITION 5	If no, go to 14.
14.	"E" of "PENCE" "normal" and near "N". = POSITION 11	
15.	Indentation where neck meets chin (also seen in position 1). = POSITION 2	

Position: **1**

KEY FEATURE		PLATING	IMPRESSION
Queen's head		Tip of nose opposite centre of base of "P" in "PAID". NB. A diagnostic feature common only to positions 1, 4, 7, 10. The hair tip of chignon hangs inwards towards back of head and points to rear base of bust.	All six shading lines present on forehead extend or almost extend to front edge. Shading lines on front foot of bust including the point. All shading lines on face and neck unbroken (except in under-inked or "sticky" print examples).
Background			All diagonal and vertical lines present and continuous. No continuous white diagonal lines, any appearance of a white line is in the form of white dots which are surrounded by colour formed by the diagonal and vertical lines crossing each other. In over-inked stamps parts of the background appear almost as solid colour; in "sticky" printings faults in the constituency of the ink allow random white areas to appear which have no connection with wear of the plate.
Peripheral inscriptions:	Post paid		
	Postage	"E" raised above the base line of other letters, thinly formed "O".	
	Mauritius	Very small "S" – its top limb insignificant.	
	One Penny		
Corner ornaments:	S.W.	Vertical lines very weak and few in number; central circle present.	
	N.W.		
	N.E.		
	S.E.		

Position: **2**

KEY FEATURE		PLATING	IMPRESSION
Queen's head		Basal line of bust very upwardly arched. NB. A diagnostic feature common only to positions 2, 5, 8, 11. The hair tip of chignon is bifurcated.	All six shading lines present on forehead extend or almost extend to front edge. All shading lines on face and neck unbroken (except in under-inked or "sticky" print examples).
Background			All diagonal and vertical lines present and continuous. No continuous white diagonal lines, any appearance of a white line is in the form of white dots which are surrounded by colour formed by the diagonal and vertical lines crossing each other. In over-inked stamps parts of the background appear almost as solid colour; in "sticky" printings faults in the constituency of the ink allow random white areas to appear which have no connection with wear of the plate.
Peripheral inscriptions:	Post paid		
	Postage	Loop of "P" and lower curve of "S" extruded.	
	Mauritius		
	One Penny		
Corner ornaments:	S.W.	The only position where the shading lines within the "box" above and below the central circle are horizontal and not vertical.	Three horizontal lines present above central circle.
	N.W.		
	N.E.		
	S.E.		

Position: **3**

KEY FEATURE		PLATING	IMPRESSION
Queen's head		Front point of base of bust points to base of "P" in "POST". NB. A diagnostic feature common only to positions 3, 6, 9, 12. Mouth slopes upwards to corner.	All seven shading lines present on forehead extend or almost extend to front edge. All shading lines on face and neck unbroken (except in under-inked or "sticky" print examples).
Background			All diagonal and vertical lines present and continuous. No continuous white diagonal lines, any appearance of a white line is in the form of white dots which are surrounded by colour formed by the diagonal and vertical lines crossing each other. In over-inked stamps parts of the background appear almost as solid colour; in "sticky" printings faults in the constituency of the ink allow random white areas to appear which have no connection with wear of the plate.
Peripheral inscriptions:	Post paid	Small "P" of "POST" and upright very short.	
	Postage	Very thin left top arm of "T". Top of "P" flat.	
	Mauritius	Tiny internal triangle in "A".	
	One Penny	First "N" shorter and wider than second "N" in "PENNY".	
Corner ornaments:	S.W.	Only two or three indistinct vertical lines visible.	
	N.W.		
	N.E.		
	S.E.		

Position: **4**

KEY FEATURE		PLATING	IMPRESSION
Queen's head		Tip of nose opposite base of "P" in "PAID". NB. A diagnostic feature common only to positions 1, 4, 7, 10. The hair tip of chignon points straight downwards to between the two "NN"s in "PENNY"	All seven shading lines present on forehead extend or almost extend to front edge. All shading lines on face and neck unbroken (except in under-inked or "sticky" print examples).
Background			All diagonal and vertical lines present and continuous. No continuous white diagonal lines, any appearance of a white line is in the form of white dots which are surrounded by colour formed by the diagonal and vertical lines crossing each other. In over-inked stamps parts of the background appear almost as solid colour; in "sticky" printings faults in the constituency of the ink allow random white areas to appear which have no connection with wear of the plate.
Peripheral inscriptions:	Post paid		
	Postage	Arms of "E" very thin. Very large "G" with its base below the level of the other letters.	
	Mauritius		
	One Penny	Very long upright to "P".	
Corner ornaments:	S.W.	Vertical lines weakly defined and few in number; central circle present.	
	N.W.		
	N.E.		
	S.E.		

Position: **5**

KEY FEATURE		PLATING	IMPRESSION
Queen's head		Basal line of bust very upwardly arched. NB. A diagnostic feature common only to positions 2, 5, 8, 11. The vertical edge of the front of neck is aligned exactly above the centre of "E" in "ONE" of "ONE PENNY". The hair tip of chignon has three laterally curved areas of colour above the tip.	All eight shading lines present on forehead extend or almost extend to front edge. All the shading lines on front foot of bust reach the front edge. All shading lines on face and neck unbroken (except in under-inked or "sticky" print examples).
Background			All diagonal and vertical lines present and continuous. No continuous white diagonal lines, any appearance of a white line is in the form of white dots which are surrounded by colour formed by the diagonal and vertical lines crossing each other. In over-inked stamps parts of the background appear almost as solid colour; in "sticky" printings faults in the constituency of the ink allow random white areas to appear which have no connection with wear of the plate.
Peripheral inscriptions:	Post paid		
	Postage		
	Mauritius		
	One Penny		
Corner ornaments:	S.W.	Vertical lines to the right of central circle do not extent to top edge of box.	Eight clearly defined vertical lines present.
	N.W.		
	N.E.		
	S.E.		

Position: **6**

KEY FEATURE		PLATING	IMPRESSION
Queen's head		Front point of base of bust points to base of "P" in "POST". NB. A diagnostic feature common only to positions 3, 6, 9, 12. Front edge of neck has slight outward curve centred on position of "Adam's Apple".	All seven shading lines present on forehead extend or almost extend to front edge. All shading lines on face and neck unbroken (except in under-inked or "sticky" print examples).
Background			All diagonal and vertical lines present and continuous. No continuous white diagonal lines, any appearance of a white line is in the form of white dots which are surrounded by colour formed by the diagonal and vertical lines crossing each other. In over-inked stamps parts of the background appear almost as solid colour; in "sticky" printings faults in the constituency of the ink allow random white areas to appear which have no connection with wear of the plate.
Peripheral inscriptions:	Post paid	Loop of "P" in "PAID" slightly extruded.	
	Postage	Blob of colour extending into top of upright of "E" at base of junction with top arm and upright.	
	Mauritius	Foreshortened lower curl of "S".	
	One Penny		
Corner ornaments:	S.W.		
	N.W.		
	N.E.		
	S.E.		One arm of corner ornament touches bottom edge of box.

Position: 7

KEY FEATURE		PLATING	IMPRESSION
Queen's head		Tip of nose opposite centre of base of "P" in "PAID". NB. A diagnostic feature common only to positions 1, 4, 7, 10. The hair tip of chignon is hooklike and is separated from the hair above by an area of colour.	All six shading lines present on forehead extend or almost extend to front edge. All shading lines on face and neck are unbroken (except in under-inked or "sticky" print examples).
Background			All diagonal and vertical lines present and continuous. No continuous white diagonal lines, any appearance of a white line is in the form of white dots which are surrounded by colour formed by the diagonal and vertical lines crossing each other. In over-inked stamps parts of the background appear almost as solid colour; in "sticky" printings faults in the constituency of the ink allow random white areas to appear which have no connection with wear of the plate.
Peripheral inscriptions:	Post paid	"D" leans to the right.	
	Postage	"O" appears roundish rather than oval. Top arm of "E" very thin centre arm very short.	
	Mauritius		
	One Penny	"Y" wide open with long thin right arm and fat left arm.	
Corner ornaments:	S.W.	Vertical lines well defined and six or seven in number. Central blob of colour not a circle.	
	N.W.		
	N.E.		Six clearly defined vertical lines present – three or more pass through top margin of box into margin of stamp.
	S.E.		

Position: 8

KEY FEATURE		PLATING	IMPRESSION
Queen's head		Basal line of bust very upwardly arched. NB. A diagnostic feature common only to positions 2, 5, 8, 11. The hair tip of chignon is the shape of a reversed C and extends downwards to a point level with a gap between "U" and "R" in "MAURITIUS".	All six shading lines present on forehead extend or almost extend to front edge. Strong shading lines present on front foot of bust including the point. Three distinct vertical shading lines present on band of diadem above forehead. All shading lines on face and neck unbroken (except in under-inked or "sticky" print examples).
Background			All diagonal and vertical lines present and continuous. No continuous white diagonal lines, any appearance of a white line is in the form of white dots which are surrounded by colour formed by the diagonal and vertical lines crossing each other. In over-inked stamps parts of the background appear almost as solid colour; in "sticky" printings faults in the constituency of the ink allow random white areas to appear which have no connection with wear of the plate.
Peripheral inscriptions:	Post paid		
	Postage		
	Mauritius	"A" is inclined to right. First "U" raised at foot. "S" leans backwards.	
	One Penny	The "O" is oval but appears longer and narrower than normal.	
Corner ornaments:	S.W.		Eight vertical lines present – four extend to top margin of "box".
	N.W.		Three arms of the corner ornament touch the right hand margin of "box".
	N.E.		Seven vertical lines present all extend to top margin of "box" not more than one to the bottom margin. The centre three lines extend at least half way from centre circle to bottom margin.
	S.E.		

Position: **9**

KEY FEATURE		PLATING	IMPRESSION
Queen's head		Front point of base of bust points to base of "P" in "POST". NB. A diagnostic feature common only to positions 3, 6, 9, 12. Tip of point of bust centred over gap between "O" and "N" in "ONE" (as in position 12) but upper part of line of front edge of neck is positioned above centre of "E" in "ONE".	Seven shading lines present on forehead six of which extend or almost extend to front edge – all are strongly defined. All shading lines on face and neck are unbroken (except in under-inked or "sticky" print examples).
Background			All diagonal and vertical lines present and continuous. No continuous white diagonal lines, any appearance of a white line is in the form of white dots which are surrounded by colour formed by the diagonal and vertical lines crossing each other. In over-inked stamps parts of the background appear almost as solid colour; in "sticky" printings faults in the constituency of the ink allow random white areas to appear which have no connection with wear of the plate.
Peripheral inscriptions:	Post paid		
	Postage	Top of "G" raised above tops of other letters. Left hand side of "O" markedly fatter than right side.	
	Mauritius		
	One Penny		
Corner ornaments:	S.W.	Blob of colour (not a circle) in centre of "box".	
	N.W.		
	N.E.	Blob of colour (not a circle) in centre of "box".	
	S.E.		

Position: **10**

KEY FEATURE		PLATING	IMPRESSION
Queen's head		Tip of nose opposite centre of base of "P" in "PAID". NB. A diagnostic feature common only to positions 1, 4, 7, 10 The hair tip of chignon is hooklike and is not separated from the hair above by an area of colour.	Seven shading lines present on forehead two or more extending to front edge. Shading lines on front foot of bust including the point. All shading lines on face and neck unbroken (except in under-inked or "sticky" print examples).
Background			All diagonal and vertical lines present and continuous. No continuous white diagonal lines, any appearance of a white line is in the form of white dots which are surrounded by colour formed by the diagonal and vertical lines crossing each other. In over-inked stamps parts of the background appear almost as solid colour; in "sticky" printings faults in the constituency of the ink allow random white areas to appear which have no connection with wear of the plate.
Peripheral inscriptions:	Post paid	Very short top left limb of "T". Very large letters especially the "D".	
	Postage	All letters large. Centre arm of "E" thick and stubby – bottom arm thin.	
	Mauritius	"S" leans backwards and has a flat top.	
	One Penny		
Corner ornaments:	S.W.	Vertical lines well defined and eight in number.	
	N.W.		Two or more of the "arms" of the ornament touch left frame of "box".
	N.E.		
	S.E.		

Position: **11**

KEY FEATURE		PLATING	IMPRESSION
Queen's head		Basal line of bust very upwardly arched. NB. A diagnostic feature common only to positions 2, 5, 8, 11.	All seven shading lines present on forehead extend or almost extend to front edge. All shading lines on face and neck are unbroken (except in under-inked or "sticky" print examples).
Background			All diagonal and vertical lines present and continuous. No continuous white diagonal lines, any appearance of a white line is in the form of white dots which are surrounded by colour formed by the diagonal and vertical lines crossing each other. In over-inked stamps parts of the background appear almost as solid colour; in "sticky" printings faults in the constituency of the ink allow random white areas to appear which have no connection with wear of the plate.
Peripheral inscriptions:	Post paid	Very large "D".	
	Postage	Tops of "T" and "E" raised above the level of other letters.	
	Mauritius		
	One Penny	All arms of "E" in "PENNY" very thin – centre arm short – upright of the "E" wide.	
Corner ornaments:	S.W.		
	N.W.	Spike of colour extends upwards into "box" near its left margin and so links corner ornament device with coloured area surrounding "POST PAID".	
	N.E.		
	S.E.		

Position: **12**

KEY FEATURE		PLATING	IMPRESSION
Queen's head		Front point of base of bust points to base of "P" in "POST". NB. A diagnostic feature common only to positions 3, 6, 9, 12. Tip of point of bust centred over gap between "O" and "N" in "ONE" (as in position 9) but line of front edge of neck is positioned over right side of "E" in "ONE".	All seven shading lines present on forehead extend or almost extend to front edge. Strong shading lines present on front foot of bust including the point. Shading line extends across face and under lower lip. All shading lines on face and neck unbroken (except in under-inked or "sticky" print examples).
Background			All diagonal and vertical lines present and continuous. No continuous white diagonal lines, any appearance of a white line is in the form of white dots which are surrounded by colour formed by the diagonal and vertical lines crossing each other. In over-inked stamps parts of the background appear almost as solid colour; in "sticky" printings faults in the constituency of the ink allow random white areas to appear which have no connection with wear of the plate.
Peripheral inscriptions:	Post paid	Letters of "POST PAID" large.	
	Postage		
	Mauritius		
	One Penny	Central island of colour in "P" extends slightly into top of upright of "P" which is broad.	
Corner ornaments:	S.W.	Blob of colour (not a circle) in centre of "box".	
	N.W.		
	N.E.	Blob of colour (not a circle) in centre of "box".	Seven clearly defined vertical lines present.
	S.E.		

Position: **1**

KEY FEATURE		PLATING	IMPRESSION
Queen's head		Tip of nose opposite centre of base of "P" in "PAID". NB. A diagnostic feature common only to positions 1, 4, 7, 10. The hair tip of chignon hangs inwardly towards back of head and points to rear base of bust.	Six shading lines present on forehead but not strongly defined. Shading lines on front foot of bust including the point. Very weak shading lines on face immediately behind upper lip and nostril.
Background			The vertical lines are beginning to weaken and some will show breaks – at these points some short unbroken diagonal white lines appear.
Peripheral inscriptions:	Post paid		No white area between "P" and "A" of "PAID".
	Postage	"E" raised above the base line of other letters. Thinly walled "O".	No white area between "E" and NE "box".
	Mauritius	Very small "S" – its top limb insignificant.	
	One Penny		
Corner ornaments:	S.W.	Vertical lines very weak and few in number. Central circle present.	
	N.W.		
	N.E.		
	S.E.		

Position: **2**

KEY FEATURE		PLATING	IMPRESSION
Queen's head		Basal line of bust very upwardly arched. NB. A diagnostic feature common only to positions 2, 5, 8, 11. The descending hair of the chignon is bifurcated at its tip.	Shading lines present on front foot of bust including the point. Shading lines reach tip of chin. Shading line present immediately below kiss curl. Six shading lines present of forehead but not strongly defined and none reach the front edge.
Background			The vertical lines are beginning to weaken and some will show breaks – At these points some short unbroken diagonal white lines appear.
Peripheral inscriptions:	Post paid		No white area between "T" and "P". No white line at base of "P" in "POST".
	Postage	Loop of "P" and lower curve of "S" extruded.	
	Mauritius		
	One Penny		
Corner ornaments:	S.W.	The only position where the shading lines within the "box", above and below the central circle, are horizontal and not vertical.	Less than three distinct horizontal lines present above central circle.
	N.W.		
	N.E.		
	S.E.		

Position : **3**

KEY FEATURE		PLATING	IMPRESSION
Queen's head		Front point of base of bust points to base of "P" in "POST". NB. A diagnostic feature common only to positions 3, 6, 9, 12. Mouth slopes upwards to its corner.	Not more than one of the shading lines on forehead reach front edge. Some shading lines visible on front foot of bust.
Background			The vertical lines are beginning to weaken and some will show breaks – at these points some short unbroken diagonal white lines appear.
Peripheral inscriptions:	Post paid	Small "P" of "POST" and upright very short.	
	Postage	Very thin top to "T". Top of "P" flat.	
	Mauritius	Tiny internal triangle in "A".	
	One Penny	First "N" shorter and wider than second "N" in "PENNY".	
Corner ornaments:	S.W.	Only two or three indistinct vertical lines visible.	Two or more vertical lines present one of which passes through central circle.
	N.W.		
	N.E.		
	S.E.		

Position : **4**

KEY FEATURE		PLATING	IMPRESSION
Queen's head		Tip of nose opposite base of "P" in "PAID". NB. A diagnostic feature common only to positions 1, 4, 7, 10 The descending hair of the chignon is evenly tapered and it points downwards to between the two "NN"s in "PENNY".	A minimum of four shading lines are visible on forehead. Shading lines present on front foot of bust one or more reaching the front edge.
Background			The vertical lines are beginning to weaken and some will show breaks – at these points some short unbroken diagonal white lines appear.
Peripheral inscriptions:	Post paid		
	Postage	Very large "G" with its base below the level of the other letters.	
	Mauritius		
	One Penny	Very long upright to "P".	
Corner ornaments:	S.W.	Vertical lines weakly defined and few in number. Central circle present.	
	N.W.		
	N.E.		
	S.E.		

Position: **5**

KEY FEATURE		PLATING	IMPRESSION
Queen's head		Basal line of bust very upwardly arched. NB. A diagnostic feature common only to positions 2, 5, 8, 11. The vertical edge of the front of neck is aligned exactly above the centre of "E" in "ONE" of "ONE PENNY". – The hair tip of chignon has three laterally curved areas of colour above the tip.	The lower five shading lines on forehead do not extend more than half way from hair line to front of forehead. Not all the shading lines on front foot of bust reach front edge. Shading line passes through base of kiss-curl.
Background			The vertical lines are beginning to weaken and some will show breaks – at these points some short unbroken diagonal white lines appear.
Peripheral inscriptions:	Post paid		
	Postage		
	Mauritius		
	One Penny	First "N" larger than second "N" of "PENNY". Arms of "Y" not widely spread.	
Corner ornaments:	S.W.		Vertical lines present to the right of central circle.
	N.W.		
	N.E.		
	S.E.		

Position: **6**

KEY FEATURE		PLATING	IMPRESSION
Queen's head		Front point of base of bust points to base of "P" in "POST". NB. A diagnostic feature common only to positions 3, 6, 9, 12. Front edge of neck has slight outward curve centred on position of "Adam's Apple".	Shading lines present on front foot of bust including the point. Most of the seven lines originally present on forehead remain clear and firm.
Background			The vertical lines are beginning to weaken and some will show breaks – at these points some short unbroken diagonal white lines appear.
Peripheral inscriptions:	Post paid	Loop of "P" in "PAID" slightly extruded.	
	Postage	Blob of colour extending into top of upright of "E" at junction with top arm and upright.	
	Mauritius	Foreshortened lower curl of "S".	
	One Penny	Second "N" larger than first "N" in "PENNY".	
Corner ornaments:	S.W.		Seven vertical lines present.
	N.W.		
	N.E.		
	S.E.		Arms of the corner ornament do not touch edge of "box".

Position: **7**

KEY FEATURE		PLATING	IMPRESSION
Queen's head		Tip of nose opposite centre of base of "P" in "PAID". NB. A diagnostic feature common only to positions 1, 4, 7, 10. The hair tip of chignon is hooklike and is separated from the hair above by an area of colour.	Shading lines present on front foot of bust including the point. The six shading lines present on forehead extend at least half way to front edge.
Background			The vertical lines are beginning to weaken and some will show breaks – at these points some short unbroken diagonal white lines appear.
Peripheral inscriptions:	Post paid	"D" leans to the right.	
	Postage	Top arm of "E" very thin, centre arm very short.	
	Mauritius		
	One Penny	"Y" wide open.	
Corner ornaments:	S.W.	Vertical lines well defined and six or seven in number. Central blob of colour not a circle.	
	N.W.		
	N.E.		Not more than one vertical line passes through top margin of box into stamp margin.
	S.E.		

Position: **8**

KEY FEATURE		PLATING	IMPRESSION
Queen's head		Basal line of bust very upwardly arched. NB. A diagnostic feature common only to positions 2, 5, 8, 11. The hair tip of chignon is the shape of a reverted "C" and extends downward to a point level with gap between "U" and "R" in "MAURITIUS".	Six shading lines present on forehead but not strongly defined and none reach front edge. Shading lines present on front foot of bust. Front foot of bust develops an upward pointing "HOOK". Indistinct vertical shading present on band of diadem above forehead.
Background			The vertical lines are beginning to weaken and some will show breaks – at these points some short unbroken diagonal white lines appear.
Peripheral inscriptions:	Post paid	Left foot of "A" is below outer loop of "P".	
	Postage		
	Mauritius	"A" is inclined to right. First "U" raised at foot. "S" leans backwards.	
	One Penny	The "O" is oval but appears elongated. Right arm of "Y" thin left arm fat.	
Corner ornaments:	S.W.		Eight vertical lines present – three extend to top margin of "box".
	N.W.		Less than three arms of the ornament touch the right hand margin of "box".
	N.E.		Seven vertical lines present, all extend to top margin of "box" not more than one to the bottom margin. The centre three lines do not extend half way from centre circle to bottom margin.
	S.E.		

Position: **9**

KEY FEATURE		PLATING	IMPRESSION
Queen's head		Front point of base of bust points to base of "P" in "POST". NB. A diagnostic feature common only to positions 3, 6, 9, 12. Tip of point of bust centred over gap between "O" and "N" in "ONE" (as in position 12) but upper part of line of front edge of neck is positioned above centre of "E" in "ONE".	Up to seven shading lines present on forehead but none are strongly defined. Shading lines on front foot of bust including the point.
Background			The vertical lines are beginning to weaken and some will show breaks – at these points some short unbroken diagonal white lines appear.
Peripheral inscriptions:	Post paid		No white area between "P" and "A" of "PAID".
	Postage	Top of "G" raised above tops of other letters. Left hand side of "O" markedly fatter than right side.	
	Mauritius		
	One Penny		
Corner ornaments:	S.W.	Blob of colour (not a circle) in centre of "box".	
	N.W.		
	N.E.	Blob of colour (not a circle) in centre of "box".	
	S.E.		

Position: **10**

KEY FEATURE		PLATING	IMPRESSION
Queen's head		Tip of nose opposite base of "P" in "PAID". NB. A diagnostic feature common only to positions 1, 4, 7, 10 The hair tip of chignon is hooklike and is not separated from the hair above by an area of colour.	Seven shading lines present on forehead not more than one extending to front edge. Shading lines on front foot of bust including the point.
Background			The vertical lines are beginning to weaken and some will show breaks – at these points some short unbroken diagonal white lines appear.
Peripheral inscriptions:	Post paid	Very short top left arm of "T". Very large letters especially the "D".	
	Postage	All letters large. Centre arm of "E" thick.	
	Mauritius	"S" leans backwards and has a flat top.	
	One Penny		
Corner ornaments:	S.W.	Vertical lines well defined and eight in number.	
	N.W.		Not more than one "arm" of the ornament touches the left frame of "box".
	N.E.		
	S.E.		

Position: **11**

KEY FEATURE		PLATING	IMPRESSION
Queen's head		Basal line of bust very upwardly arched. NB. A diagnostic feature common only to positions 2, 5, 8, 11.	Shading lines on forehead becoming faint a few at most may extend to front edge. Shading lines present on front foot of bust including the point. Five shading lines present on side of nose.
Background			The vertical lines are beginning to weaken and some will show breaks -- at these points some short unbroken diagonal white lines appear.
Peripheral inscriptions:	Post paid	Very large "D".	
	Postage	Tops of "T" and "E" raised above the level of other letters.	
	Mauritius		
	One Penny	All arms of "E" in "PENNY" very thin. Centre arm short. Upright of the "E" wide.	
Corner ornaments:	S.W.		
	N.W.	Spike of colour extends upwards into "box" near its left margin and so links corner ornament with coloured area surrounding "POST PAID".	
	N.E.		
	S.E.		

Position: **12**

KEY FEATURE		PLATING	IMPRESSION
Queen's head		Front point of base of bust points to base of "P" in "POST". NB. A diagnostic feature common only to positions 3, 6, 9, 12. Tip of point of bust centred over gap between "O" and "N" in "ONE" (as in position 9) but line of front edge of neck is positioned above right side of "E" in "ONE".	Up to seven shading lines present on forehead but becoming weak. Shading lines present on front foot of bust. There is no shading line immediately below lower lip.
Background			The vertical lines are beginning to weaken and some will show breaks -- at these points some short unbroken diagonal white lines appear.
Peripheral inscriptions:	Post paid	Letters of "POST PAID" large.	
	Postage		
	Mauritius		
	One Penny	Central island of colour in loop of "P" extends slightly into top of upright of "P" which is broad.	
Corner ornaments:	S.W.	Blob of colour (not a circle) in centre of "box".	
	N.W.		
	N.E.	Blob of colour (not a circle) in centre of "box".	Six or fewer vertical lines present.
	S.E.		One or more arms of device join lower margin of "box".

Position: **1**

KEY FEATURE		PLATING	IMPRESSION
Queen's head		Tip of nose opposite centre of base of "P" in "PAID". NB. A diagnostic feature common only to positions 1, 4, 7, 10. The hair tip of chignon hangs inwardly towards back of head and points to rear base of bust.	Not more than five shading lines present on forehead. No distinct shading lines present on front foot of bust.
Background			Vertical lines not continuous, where they disappear white diagonal lines appear.
Peripheral inscriptions:	Post paid	Column of whiteness developing and descending from end of right upright of "T" and may form second upright.	White area forming between "P" and "A" of "PAID".
	Postage	"E" raised above base line of other letters; thinly walled "O". With increased wear "P" may resemble an "R".	White area forming between "E" and NE "box".
	Mauritius	Central part of "S" fat, top and bottom small and ill defined.	
	One Penny	"Y" widely spaced. Central stroke of "N" thick in "ONE".	
Corner ornaments:	S.W.		
	N.W.		
	N.E.		
	S.E.		

Position: **2**

KEY FEATURE		PLATING	IMPRESSION
Queen's head		Basal line of bust very upwardly arched. NB. A diagnostic feature common only to positions 2, 5, 8, 11. The descending hair of the chignon is bifurcated at its tip.	No shading lines present on front foot of bust. Shading lines do not reach tip of chin or if they do so they are hardly discernable. Shading line immediately below kiss-curl absent.
Background			Vertical lines not continuous, where they disappear white diagonal lines appear.
Peripheral inscriptions:	Post paid	"Foot" appearing at base of "P" in "POST".	White area just visible between "T" and "P". Thin white line just visible at base of "P" in "POST".
	Postage	Loop of "P" and lower curve of "S" extruded. "P" leans to right.	
	Mauritius	"I" and "T" may be joined in examples showing increased wear.	
	One Penny	"Y" touches side of "box" in examples showing increased wear.	Right arm of "Y" appears longer than left arm and almost joins SE "box".
Corner ornaments:	S.W.		No horizontal lines present above central circle. Central circle visible.
	N.W.		
	N.E.		
	S.E.		

Position: **3**

KEY FEATURE		PLATING	IMPRESSION
Queen's head		Front point of base of bust points to base of "P" in "POST". NB. A diagnostic feature common only to positions 3, 6, 9, 12. Mouth slopes upwards to its corner.	Few if any shading lines present on front foot of bust. Shading lines do not reach tip of chin or if they do so they are very faint. Not more than one shading line on neck reaches its front edge.
Background			Vertical lines not continuous, where they disappear white diagonal lines appear.
Peripheral inscriptions:	Post paid	Small "P" of "POST" and upright very short. Small "T". Top of "D" thin.	White area begins to appear between "D" and NW ornament.
	Postage	Thin top to "T". Top of "P" flat.	
	Mauritius	Tiny internal triangle in "A".	
	One Penny	First "N" shorter and wider than second "N" in "PENNY".	
Corner ornaments:	S.W.		
	N.W.		
	N.E.		
	S.E.		

Position: **4**

KEY FEATURE		PLATING	IMPRESSION
Queen's head		Tip of nose opposite base of "P" in "PAID". NB. A diagnostic feature common only to positions 1, 4, 7, 10. The descending hair of the chignon is evenly tapered and it points downwards to between the two "NN"s in "PENNY".	Few if any shading lines present on front foot of bust. Shading lines not present at line of jaw-bone between tip of chin and an imaginary line extending vertically from front edge of neck (lines are present below tip of chin).
Background			Vertical lines not continuous, where they disappear white diagonal lines appear.
Peripheral inscriptions:	Post paid		
	Postage	Very large "G" with its base below the level of other letters. Short "P". Tall "S".	
	Mauritius	Top of "S" touches background shading.	
	One Penny	Very long upright to "P". Small loop to "P".	
Corner ornaments:	S.W.		No vertical shading lines present.
	N.W.		
	N.E.		
	S.E.		

Position: **5**

KEY FEATURE		PLATING	IMPRESSION
Queen's head		Basal line of bust very upwardly arched. NB. A diagnostic feature common only to positions 2, 5, 8, 11. The vertical edge of the front of neck is aligned exactly above the centre of "E" in "ONE" of "ONE PENNY".	Few if any shading lines present on front foot of bust. Not more than three shading lines on neck extend to front edge. No shading line passes through base of kiss-curl.
Background			Vertical lines not continuous, where they disappear white diagonal lines appear.
Peripheral inscriptions:	Post paid	"P" in "PAID" appears to lean to right.	White area appearing to the left of "P" in "PAID".
	Postage	Top bar of "E" slopes upward.	
	Mauritius		
	One Penny	First "N" larger than "N" of "PENNY". Arms of "Y" not widely spread.	White area appearing between "E" and "P".
Corner ornaments:	S.W.		No vertical lines present to right of central circle.
	N.W.		
	N.E.		
	S.E.		

Position: **6**

KEY FEATURE		PLATING	IMPRESSION
Queen's head		Front point of base of bust points to base of "P" in "POST". NB. A diagnostic feature common only to positions 3, 6, 9, 12. Front edge of neck has slight outward curve centred on position of "Adam's Apple".	Few if any shading lines present on front foot of bust. Few if any of the original shading lines on forehead are clearly visible.
Background			Vertical lines not continuous, where they disappear white diagonal lines appear.
Peripheral inscriptions:	Post paid	Loop of "P" in "PAID" slightly extruded.	
	Postage	Blob of colour extending into top of upright of "E" at base of junction with top arm and upright.	
	Mauritius	Foreshortened lower curl of "S".	
	One Penny	Second "N" larger than the first in "PENNY".	
Corner ornaments:	S.W.		Six or fewer vertical lines present.
	N.W.		
	N.E.		
	S.E.		

Position: **7**

KEY FEATURE		PLATING	IMPRESSION
Queen's head		Tip of nose opposite centre of base of "P" in "PAID". NB. A diagnostic feature common only to positions 1, 4, 7, 10.	Any remaining shading lines on forehead (except that nearest the daidem) extend less than half way to front edge. Few if any shading lines on front foot of bust.
Background			Vertical lines not continuous, where they disappear white diagonal lines appear.
Peripheral inscriptions:	Post paid	"D" leans to right. In first "P" the central island of colour extends into top of upright. In second "P" the upright has a very thick base tapering upwards.	
	Postage	Loop of "P" droops. Top arm of "E" very thin; centre arm very short and centred high.	
	Mauritius	Sharp right bottom corner to second "U". Thin flat top to "S".	
	One Penny	"Y" wide open.	
Corner ornaments:	S.W.		
	N.W.		
	N.E.		
	S.E.		

Position: **8**

KEY FEATURE		PLATING	IMPRESSION
Queen's head		Basal line of bust very upwardly arched. NB. A diagnostic feature common only to positions 2, 5, 8, 11.	Few if any shading lines present on front foot of bust. Shading lines on forehead almost or completely absent.
Background			Vertical lines not continuous, where they disappear white diagonal lines appear.
Peripheral inscriptions:	Post paid	Left foot of "A" is below loop of "P".	White area begins to appear between "T" and "P". White line begins to appear just below lower margin of NW corner ornament.
	Postage		"O" and "S" almost touch.
	Mauritius	"A" is inclined to right. "S" leans backwards. First "U" raised at foot.	
	One Penny	The "O" is oval and appears elongated. Right arm of "Y" thin left arm fat.	
Corner ornaments:	S.W.		Not more than six vertical lines present.
	N.W.		Not more than one arm of the ornament touches the right hand margin of "box".
	N.E.		
	S.E.		

Position: **9**

KEY FEATURE		PLATING	IMPRESSION
Queen's head		Front point of base of bust points to base of "P" in "POST". NB. A diagnostic feature common only to positions 3, 6, 9, 12. Tip of point of bust centred over gap between "O" and "N" in "ONE" (as in position 12) but upper part of line of front edge of neck is positioned above centre of "E" in "ONE".	Remnants of shading line may be present on forehead. Few if any shading lines present on foot of bust – None near the point. The majority of the shading lines on neck are discontinuous in the centre section.
Background			Vertical lines not continuous, where they disappear white diagonal lines appear.
Peripheral inscriptions:	Post paid		
	Postage	Left side of "O" markedly fatter than right side. Flat top to "P".	
	Mauritius	"S" leans backwards. Second "U" fatter than first "U".	
	One Penny		
Corner ornaments:	S.W.		
	N.W.		
	N.E.		
	S.E.		

Position: **10**

KEY FEATURE		PLATING	IMPRESSION
Queen's head		Tip of nose opposite base of "P" in "PAID". NB. A diagnostic feature common only to positions 1, 4, 7, 10. Hump in centre of top edge of foot of bust.	Not more than three of four weak shading lines remain on forehead – none may be present. Not more than five faint shading lines present of foot of bust none extending to front edge.
Background			Vertical shading lines not continuous, where they disappear white diagonal lines appear. The remnants of the vertical shading lines are most obvious below bust and in front of neck and face.
Peripheral inscriptions:	Post paid	Very short top left arm of "T". Very large letters especially the wide "D".	
	Postage	All letters large. Centre arm of "E" thick.	
	Mauritius	"S" leans backwards, has a flat top and is unevenly formed.	
	One Penny	Large "Y".	White area appears between "E" and "P".
Corner ornaments:	S.W.		
	N.W.		
	N.E.		
	S.E.		

Position: **11**

KEY FEATURE		PLATING	IMPRESSION
Queen's head		Basal line of bust very upwardly arched. NB. A diagnostic feature common only to positions 2, 5, 8, 11.	Not more than one clearly defined shading line present on forehead. Shading lines on foot of bust are faint and none present on point.
Background			Vertical lines not continuous, where they disappear white diagonal lines appear.
Peripheral inscriptions:	Post paid	Very large "D".	
	Postage	Top of "T" and "E" raised above the level of other letters.	White vertical lines begin to appear between "E" and NE "box".
	Mauritius		
	One Penny	"Y" has fat stem, short arms and thin right arm.	
Corner ornaments:	S.W.		
	N.W.	Spike of colour extends upwards into "box" near its left margin and so links corner ornament with coloured area surrounding "Post Paid".	
	N.E.		
	S.E.		

Position: **12**

KEY FEATURE		PLATING	IMPRESSION
Queen's head		Front point of base of bust points to base of "P" in "POST". NB. A diagnostic feature common only to positions 3, 6, 9, 12. Tip of point of bust centred over gap between "O" and "N" in "ONE" (as in position 9) but line of front edge of neck is positioned above right side of "E" in "ONE".	Shading lines on forehead almost or completely absent. Weak shading lines present on front foot of bust. No shading lines on nose.
Background			Vertical lines not continuous, where they disappear white diagonal lines appear.
Peripheral inscriptions:	Post paid	Letters of "Post Paid" large.	Horizontal white lines begin to appear below NW "box".
	Postage	Heavy foot to "T" and arms appear slightly tilted downwards from left to right.	
	Mauritius	"S" leans backwards.	
	One Penny	Central island of colour in loop of "P" extends slightly into top of upright of "P" which is broad.	
Corner ornaments:	S.W.		
	N.W.		
	N.E.		
	S.E.		Arms of device do not extend to lower margin of box.

Position: **1**

KEY FEATURE		PLATING	IMPRESSION
Queen's head		Tip of nose opposite centre of base of "P" in "PAID". NB. A diagnostic feature common only to positions 1, 4, 7, 10.	Shading lines on face very weak or absent.
Background			Diagonal white lines almost all continuous.
Peripheral inscriptions:	Post paid	Column of whiteness forming second upright to "T".	White area to the right of the stem of "T". White areas between "T" and "P" and between "P" and "A".
	Postage	Both curves of "S" extruded. "E" raised.	White area between "E" and NE "box".
	Mauritius	"S" is fat and squat.	
	One Penny	"P" may resemble an "R". "O" small.	Top and bottom arms of "E" of "PENNY" join to form island of colour
Corner ornaments:	S.W.		
	N.W.		
	N.E.		
	S.E.		

Position: **2**

KEY FEATURE		PLATING	IMPRESSION
Queen's head		Basal line of bust very upwardly arched. NB. A diagnostic feature common only to positions 2, 5, 8, 11.	Shading lines of face confined to behind an imaginary vertical line through cheek-bone.
Background			Diagonal white lines almost all continuous.
Peripheral inscriptions:	Post paid	A "foot" extends from base of upright to the full width of "P" in "POST".	
	Postage	Loop of "P" and lower curve of "S" extruded. "P" leans to right.	
	Mauritius	"I" and "T" joined.	"I" and "T" join at top.
	One Penny	Right arm of "Y" joins "box".	"Y" joins SE "box". Top two arms of "E" of "PENNY" join to form an island of colour.
Corner ornaments:	S.W.		Central circle not visible.
	N.W.		
	N.E.		
	S.E.		

Position: **3**

KEY FEATURE		PLATING	IMPRESSION
Queen's head		Front point of base of bust points to base of "P" in "POST". NB. A diagnostic feature common only to positions 3, 6, 9, 12. Mouth slopes upwards to its corner.	Shading lines on face confined to behind an imaginary vertical line through cheek-bone.
Background			Diagonal white lines almost all continuous.
Peripheral inscriptions:	Post paid	Small "P" of "POST" and upright very short. Small "T". Top of "D" thin.	All letters identifiable
	Postage	Thin top to "T". Top of "P" flat.	
	Mauritius		
	One Penny	First "N" wider than second "N" of "PENNY".	
Corner ornaments:	S.W.		
	N.W.		
	N.E.		
	S.E.		

Position: **4**

KEY FEATURE		PLATING	IMPRESSION
Queen's head		Tip of nose opposite base of "P" in "PAID". NB. A diagnostic feature common only to positions 1, 4, 7, 10. The descending hair of the chignon is evenly tapered and it point downward to the first "N" in "PENNY".	Shading lines of face confined to behind an imaginary vertical line through cheek-bone.
Background			Diagonal white lines almost all continuous.
Peripheral inscriptions:	Post paid		All letters identifiable
	Postage	Very large "G" with its base below the level of other letters. Short "P". Tall "S".	
	Mauritius	Top of "S" merges into central background.	
	One Penny	Very long upright to "P" loop of "P" nearly touches "E". Small loop and small central island of colour in "P".	
Corner ornaments:	S.W.		
	N.W.		
	N.E.		
	S.E.		

Position: **5**

KEY FEATURE		PLATING	IMPRESSION
Queen's head		Basal line of bust very upwardly arched. NB. A diagnostic feature common only to positions 2, 5, 8, 11. The vertical edge of the front of neck is aligned exactly above the centre of "E" in "ONE" of "ONE PENNY".	Shading lines on face confined to behind an imaginary vertical line through cheek bone.
Background			Diagonal white lines almost all continuous.
Peripheral inscriptions:	Post paid	"D" leans to right.	All letters identifiable
	Postage	"O" and "S" very near or touch. White area extends between "T" and "A".	
	Mauritius	First "U" thinner than second "U".	
	One Penny	First "N" larger than second "N" of "PENNY". Arms of "Y" not widely spread. "O" and "N" almost touch.	
Corner ornaments:	S.W.		
	N.W.		
	N.E.		
	S.E.		

Position: **6**

KEY FEATURE		PLATING	IMPRESSION
Queen's head		Front point of base of bust points to base of "P" in "POST". NB. A diagnostic feature common only to positions 3, 6, 9, 12. Front edge of neck has slight outward curve.	Shading lines of face confined to behind an imaginary vertical line through cheek bone.
Background			Diagonal white lines almost all continuous.
Peripheral inscriptions:	Post paid	Base and loop of "P" join to encircle an island of colour below loop of "P". Large white areas between "T" and "P" and "D" and "box".	All letters identifiable
	Postage	"G" and "E" join at base. Upward extension of lower curve in "S" joins or nearly joins top end of the "S".	
	Mauritius	"M" and "A" join.	
	One Penny	Upright of "P" very wide. Second "N" larger than first "N" in "PENNY".	
Corner ornaments:	S.W.		
	N.W.		
	N.E.		
	S.E.		

Position : **7**

KEY FEATURE		PLATING	IMPRESSION
Queen's head		Tip of nose opposite centre of base of "P" in "PAID". NB. A diagnostic feature common only to positions 1, 4, 7, 10.	Shading lines on face confined at most to behind an imaginary vertical line through right side of kiss-curl.
Background			Diagonal white lines almost all continuous.
Peripheral inscriptions:	Post paid	"D" leans to right. In second "P" the upright has a very thick base tapering upwards.	All letters identifiable
	Postage	Loop of "P" droops. Centre arm of "E" very small and centred high.	
	Mauritius	Sharp right hand corner to second "U". Thin flat top to "S"	
	One Penny	"Y" wide open.	
Corner ornaments:	S.W.		
	N.W.		
	N.E.		
	S.E.		

Position : **8**

KEY FEATURE		PLATING	IMPRESSION
Queen's head		Basal line of bust very upwardly arched. NB. A diagnostic feature common only to positions 2, 5, 8, 11.	Shading lines of face confined to behind an imaginary vertical line through right side of kiss-curl.
Background			Diagonal white lines almost all continuous.
Peripheral inscriptions:	Post paid	Left foot of "A" is below loop of "P". "D" leans to right.	All letters identifiable
	Postage	"O" and "S" join.	
	Mauritius	"A" is inclined to right. "S" leans backwards. First "U" raised at foot.	
	One Penny	The "O" is oval and appears elongated. Right arm of "Y" thin left arm fat. Right arm extends into junction of SE "box" and background.	
Corner ornaments:	S.W.		
	N.W.		
	N.E.		
	S.E.		

Position: **9**

KEY FEATURE		PLATING	IMPRESSION
Queen's head		Front point of base of bust points to base of "P". NB. A diagnostic feature common only to positions 3, 6, 9, 12.	Shading lines on face very weak or absent.
Background			Diagonal white lines almost all continuous.
Peripheral inscriptions:	Post paid	Flattish top to "P" in "POST".	All letters identifiable
	Postage	Left side of "O" markedly fatter than right side.	
	Mauritius	"S" leans backwards. Second "U" fatter than first "U".	
	One Penny	Downward extension from loop of "P". Top two arms of both "E"s tend to join to form islands of colour.	
Corner ornaments:	S.W.		
	N.W.		
	N.E.		
	S.E.		

Position: **10**

KEY FEATURE		PLATING	IMPRESSION
Queen's head		Tip of nose opposite base of "P" in "PAID". NB. A diagnostic feature common only to positions 1, 4, 7, 10. Hump in centre of top edge of foot of bust.	Shading lines on face confined to lower part of chin at most. Shading lines on neck are weak. A few may extend to front edge but more usually are confined to rear part of neck at most.
Background			Diagonal white lines almost all continuous.
Peripheral inscriptions:	Post paid	Very short top left arm of "T". Very large letters with very wide "D". Very thick upright of "P" in "PAID".	All letters identifiable
	Postage	All letters large. Centre arm of "E" thick.	
	Mauritius	"S" leans backwards, has a flat top and is unevenly formed.	
	One Penny	Large "Y".	
Corner ornaments:	S.W.		
	N.W.		
	N.E.		
	S.E.		

Position : **11**

KEY FEATURE		PLATING	IMPRESSION
Queen's head		Basal line of bust very upwardly arched. NB. A diagnostic feature common only to positions 2, 5, 8, 11.	Shading lines of face confined at most to behind an imaginary vertical line through cheek-bone.
Background			Diagonal white lines almost all continuous.
Peripheral inscriptions:	Post paid	Very large "D". White line between feet of "A"	All letters identifiable
	Postage	Tops of "T" and "E" raised above the level of other letters.	
	Mauritius	Left leg of "M" short.	
	One Penny	"Y" has fat stem, short arms and thin right arm. "O" joins "N".	
Corner ornaments:	S.W.		
	N.W.	Spike of colour extends upwards into "box" near its left margin and so links corner ornament with coloured area surrounding "Post Paid".	
	N.E.		Central circle no longer visible.
	S.E.		

Position : **12**

KEY FEATURE		PLATING	IMPRESSION
Queen's head		Front point of base of bust points to base of "P" in "POST". NB. A diagnostic feature common only to positions 3, 6, 9, 12.	Shading lines to face confined to behind an imaginary vertical line through cheek-bone.
Background			Diagonal white lines almost all continuous.
Peripheral inscriptions:	Post paid	Letters of "Post Paid" large. Left foot of "A" extends under bowl of "P". Short left arm of "T". Fat lower curve to "S" and thin top.	All letters identifiable
	Postage		
	Mauritius	"S" leans backwards.	
	One Penny		
Corner ornaments:	S.W.		
	N.W.		
	N.E.		
	S.E.		

Position: **1**

KEY FEATURE		PLATING	IMPRESSION
Queen's head		Tip of nose opposite centre of base of "P" in "PAID". NB. A diagnostic feature common only to positions 1, 4, 7, 10.	The visible parts restricted at most to outline of head, the eye, eyebrow, nostril, position of diadem, a few pieces of hair and a few remnants of shading lines at back of neck.
Background			Some or most of the background shading lines worn away to give areas of colourless paper.
Peripheral inscriptions:	Post paid	Column of whiteness forming second upright to "T".	Some of the letters are so worn they are unidentifiable
	Postage	Appearance of a double cross piece to "A". Centre and lower arms of "E" join to form an island of colour.	
	Mauritius	"S" is fat and squat.	
	One Penny	Top and centre arms of "E" in "ONE" join to form an island of colour. "P" may resemble an "R".	
Corner ornaments:	S.W.		
	N.W.		
	N.E.		
	S.E.		

Position: **2**

KEY FEATURE		PLATING	IMPRESSION
Queen's head		Basal line of bust very upwardly arched. NB. A diagnostic feature common only to positions 2, 5, 8, 11.	The visible parts restricted at most to outline of head, the eye, eyebrow, position of diadem, kiss-curl, a few pieces of hair and few remnants of shading lines at back of neck.
Background			Some or most of the background lines worn away to give areas of colourless paper.
Peripheral inscriptions:	Post paid	A "foot" extends from base of upright to the full width of "P" in "POST". "T" and "P" merge.	Some of the letters are so worn they are unidentifiable
	Postage	Lower part of "S" fat. "O" and "S" join. Ends of all three arms of "E" join to form two islands of colour.	
	Mauritius	"I" and "T" join.	
	One Penny	Right arm of "Y" joins "box".	
Corner ornaments:	S.W.		
	N.W.		
	N.E.		
	S.E.		

Position: **3**

KEY FEATURE		PLATING	IMPRESSION
Queen's head		Front point of base of bust points to base of "P" in "POST". NB. A diagnostic feature common only to positions 3, 6, 9, 12.	The visible parts restricted at most to outline of head, the eye, position of diadem, a few pieces of hair and a few remnants of shading lines at back of neck.
Background			Some or most of the background lines worn away to give areas of colourless paper.
Peripheral inscriptions:	Post paid	Small "P" of "POST" and upright very short. Area of whiteness between "P" and "box".	Some of the letters are so worn they are unidentifiable
	Postage	Thin top to "T". Top of "P" flat. All letters rest on base line.	
	Mauritius	All letters well raised above base line.	
	One Penny	First "N" wider than second "N" of "PENNY". All letters well raised above base line.	
Corner ornaments:	S.W.		
	N.W.		
	N.E.		
	S.E.		

Position: **4**

KEY FEATURE		PLATING	IMPRESSION
Queen's head		Tip of nose opposite base of "P" in "PAID". NB. A diagnostic feature common only to positions 1, 4, 7, 10. The descending hair of the chignon is evenly tapered and it points downward to the first "N" in "PENNY".	The visible parts restricted at most to outline of head, the eye, nostril, diadem, kiss-curl, a few pieces of hair and a few remnants of shading lines at back of neck.
Background			Some or most of the background lines worn away to give areas of colourless paper.
Peripheral inscriptions:	Post paid		Some of the letters are so worn they are unidentifiable
	Postage	Very large "G" with its base below the level of other letters. Short "P", – tall "S", – "T" and "A" may merge.	
	Mauritius	Top of "S" merges into central background. White column descends from top left limb of "T".	
	One Penny	Large white area between "N" and "Y" and between "E" and "P".	
Corner ornaments:	S.W.		
	N.W.		
	N.E.		
	S.E.		

Position: **5**

KEY FEATURE		PLATING	IMPRESSION
Queen's head		Basal line of bust very upwardly arched. NB. A diagnostic feature common only to positions 2, 5, 8, 11. The vertical edge of the front of neck is aligned exactly above the centre of "E" in "ONE" of "ONE PENNY".	The visible parts restricted at most to outline of head, the eye, eyebrow, nostril, diadem and remnants of shading lines at back of neck.
Background			Some or most of the background lines worn away to give areas of colourless paper.
Peripheral inscriptions:	Post paid	"D" leans to right.	Some of the letters are so worn they are unidentifiable
	Postage	"O" and "S" very near or touch. White area extends between "T" and "A".	
	Mauritius	First "U" thinner than second "U".	
	One Penny	First "N" larger than second "N" of "PENNY". Arms of "Y" not widely spaced. "O" and "N" almost touch.	
Corner ornaments:	S.W.		
	N.W.		
	N.E.		
	S.E.		

Position: **6**

KEY FEATURE		PLATING	IMPRESSION
Queen's head		Front point of base of bust points to base of "P" in "POST". NB. A diagnostic feature common only to positions 3, 6, 9, 12. Front edge of neck has slight outward curve.	The visible parts restricted at most to outline of head, the eye, eyebrow, diadem a few pieces of hair and a few remnants of shading lines at back of neck.
Background			Some or most of the background lines worn away to give areas of colourless paper.
Peripheral inscriptions:	Post paid	Base and loop of "P" join. Large white areas between "T" and "P" and "box". "S" and "T" join.	Some of the letters are so worn they are unidentifiable
	Postage	"G" and "E" join at base. Upward extension of lower curve in "S" joins top arm of "S". "T" and "A" join.	
	Mauritius	"M" and "A" join. Second "U" becomes blob of whiteness.	
	One Penny	Upright of "P" very wide, no colour remains in centre of loop. Second "N" larger than first "N" in "PENNY".	
Corner ornaments:	S.W.		
	N.W.		
	N.E.		
	S.E.		

Position: **7**

KEY FEATURE		PLATING	IMPRESSION
Queen's head		Tip of nose opposite centre of base of "P" in "PAID". NB. A diagnostic feature common only to positions 1, 4, 7, 10.	The visible parts restricted at most to outline of head, the eye, diadem, a few pieces of hair and a few remnants of shading lines at back of neck.
Background			Some or most of the background lines worn away to give areas of colourless paper.
Peripheral inscriptions:	Post paid	"P" and "D" lean to right.	Some of the letters are so worn they are unidentifiable
	Postage	Loop of "P" droops. Centre arm of "E" very small and centred high.	
	Mauritius	First "I" and "T" join. "U" and "S" join.	
	One Penny	"Y" wide open.	
Corner ornaments:	S.W.		
	N.W.		
	N.E.		
	S.E.		

Position: **8**

KEY FEATURE		PLATING	IMPRESSION
Queen's head		Basal line of bust very upwardly arched. NB. A diagnostic feature common only to positions 2, 5, 8, 11.	The visible parts restricted at most to outline of head, the eye, eyebrow, kiss-curl, diadem, a few pieces of hair and a few remnants of shading lines at back of neck.
Background			Some or most of the background lines worn away to give areas of colourless paper.
Peripheral inscriptions:	Post paid	Left foot of "A" is below loop of "P". "D" leans to right.	Some of the letters are so worn they are unidentifiable
	Postage	"O" and "S" join.	
	Mauritius	"A" is inclined to right. "S" leans backwards. First "U" raised at foot.	
	One Penny	The "O" is oval and appears elongated. – Right arm of "Y", thin, left arm fat. – Right arm extends into top corner where "box" joins background area. – The top and middle arms of both "E"s merge.	
Corner ornaments:	S.W.		
	N.W.		
	N.E.		
	S.E.		

Position: **9**

KEY FEATURE		PLATING	IMPRESSION
Queen's head		Front point of base of bust points to base of "P" in "POST". NB. A diagnostic feature common only to positions 3, 6, 9, 12.	The visible parts restricted at most to outline of head, the eye, nostril, position of diadem, a few pieces of hair, the kiss-curl, and remnants of shading lines at back of neck.
Background			Some or most of the background shading lines worn away to give areas of colourless paper.
Peripheral inscriptions:	Post paid	Flattish top to "P" in "POST".	Some of the letters are so worn they are unidentifiable
	Postage	Left side of "O" markedly fatter than right side. Flat top to "P".	
	Mauritius	"S" leans backwards. Second "U" fatter than first "U".	
	One Penny	Downward extension from loop of "P". Two top arms of both "E"s join to form islands of colour.	
Corner ornaments:	S.W.		
	N.W.		
	N.E.		
	S.E.		

Position: **10**

KEY FEATURE		PLATING	IMPRESSION
Queen's head		Tip of nose opposite base of "P" in "PAID". NB. A diagnostic feature common only to positions 1, 4, 7, 10. Hump in centre of top edge of foot of bust.	The visible parts restricted at most to outline of head, the eye, diadem, kiss-curl, a few pieces of hair and a few remnants of shading lines at back of neck.
Background			Some or most of the background lines worn away to give areas of colourless paper.
Peripheral inscriptions:	Post paid	Very short left arm of "T". Very large letters with very large "D".	Some of the letters are so worn they are unidentifiable
	Postage	All letters large.	
	Mauritius	"S" leans backwards, has a flat top and is unevenly formed.	
	One Penny	Large "Y".	
Corner ornaments:	S.W.		
	N.W.		
	N.E.		
	S.E.		

Position: **11**

KEY FEATURE		PLATING	IMPRESSION
Queen's head		Basal line of bust very upwardly arched. NB. A diagnostic feature common only to positions 2, 5, 8, 11.	The visible parts restricted at most to outline of head, the eye, eyebrow, nostril, kiss-curl, diadem, a few pieces of hair and a few remnants of shading lines at back of neck.
Background			Some or most of the background shading lines worn away to give areas of colourless paper.
Peripheral inscriptions:	Post paid	Very large "D". White line between feet of "A".	Some of the letters are so worn they are unidentifiable
	Postage	Top of "T" and "E" raised above the level of other letters.	
	Mauritius		
	One Penny	"Y" has short arms. "O" joins "N".	
Corner ornaments:	S.W.		
	N.W.	Spike of colour extends upwards into "box" near its left margin and so links corner ornament with coloured area surrounding "Post Paid".	
	N.E.		
	S.E.		

Position: **12**

KEY FEATURE		PLATING	IMPRESSION
Queen's head		Front point of base of bust points to base of "P" in "POST". NB. A diagnostic feature common only to positions 3, 6, 9, 12.	The visible parts restricted at most to outline of head, the eye, eyebrow, nostril, kiss-curl, diadem, a few pieces of hair and a few remnants of shading lines at back of neck.
Background			Some or most of the background lines worn away to give areas of colourless paper.
Peripheral inscriptions:	Post paid	Letters of "POST PAID" large. Left foot of "A" extends under bowl of "P". Short left arm of "T". – Fat lower curve of "S" and small top.	Some of the letters are so worn they are unidentifiable
	Postage	Very wide upright to "T" tapering to the top.	
	Mauritius	"S" leans backwards.	
	One Penny		
Corner ornaments:	S.W.		
	N.W.		
	N.E.		
	S.E.		

Position: **1**

KEY FEATURE		PLATING	IMPRESSION
Queen's head		Corner of mouth (ignore shading line) does not extend past line of nostril. NB. A diagnostic feature common only to positions 1 and 4. The hair tip of chignon points to nape of neck (distinguish from position 4). Nose pointed.	All shading lines on face and neck unbroken and strongly defined. All ten shading lines present on forehead extend or almost extend to front edge. Shading lines on front foot of bust including the point.
Background			In the very rare "premières gravures" examples the background appears almost as solid colour of a heavy dark slated blue with the features of the head deeply shaded. In the "later" examples of earliest stamps all diagonal and vertical lines present and continuous no continuous white diagonal lines, any appearance of a white line is in the form of white dots which are surrounded by colour formed by the diagonal and vertical lines crossing each other (see reference under "Early" Impression to "sticky" printings which applies equally to "Earliest").
Peripheral inscriptions:	Post paid		
	Postage	Long upright to "T".	
	Mauritius		
	Two Pence	Top of "Q" absent. Flat top to "P" and loop extruded upwards.	
Corner ornaments:	S.W.		
	N.W.		
	N.E.		
	S.E.		

Position: **2**

KEY FEATURE		PLATING	IMPRESSION
Queen's head		Indentation of background into bust where chin meets neck (also in position 1) and mouth extends past line of nostril.	All shading lines on face and neck unbroken and strongly defined. All twelve shading lines present on forehead extend or almost extend to front edge. Shading lines on front foot of bust including the point.
Background			In the very rare "premières gravures" examples the background appears almost as solid colour of a heavy dark slated blue with the features of the head deeply shaded. In the "later" examples of earliest stamps all diagonal and vertical lines present and continuous no continuous white diagonal lines, any appearance of a white line is in the form of white dots which are surrounded by colour formed by the diagonal and vertical lines crossing each other (see reference under "Early" Impression to "sticky" printings which applies equally to "Earliest").
Peripheral inscriptions:	Post paid		
	Postage	Thin top to "T".	
	Mauritius		
	Two Pence	All the letters of "Pence" small (as in position 6) and positioned towards the right so that last "E" is close to SE "box" (in contrast to position 6). Upright of "E" thicker between centre and top arm than the lower.	
Corner ornaments:	S.W.		
	N.W.		
	N.E.		
	S.E.		

Position : **3**

KEY FEATURE		PLATING	IMPRESSION
Queen's head		Chin exactly opposite "T" in "POST". NB. A diagnostic feature common only to positions 3, 6, 9 and 12. A curved line of colour separates rear "heel" of bust from its tip.	All shading lines on face and neck unbroken and strongly defined. All twelve shading lines present on forehead extend or almost extend to front edge. Shading lines on front foot of bust including the point.
Background			In the very rare "premières gravures" examples the background appears almost as solid colour of a heavy dark slated blue with the features of the head deeply shaded. In the "later" examples of earliest stamps all diagonal and vertical lines present and continuous no continuous white diagonal lines, any appearance of a white line is in the form of white dots which are surrounded by colour formed by the diagonal and vertical lines crossing each other (see reference under "Early" Impression to "sticky" printings which applies equally to "Earliest").
Peripheral inscriptions:	Post paid		
	Postage	Flat top to "P".	
	Mauritius		
	Two Pence	Small "C".	
Corner ornaments:	S.W.		
	N.W.	Device centred to the left so that arms extend to left margin of "box" but leave a wide area of whiteness on right side.	
	N.E.		
	S.E.		

Position : **4**

KEY FEATURE		PLATING	IMPRESSION
Queen's head		Corner of mouth (ignore shading line) does not extend past the nostril. NB. A diagnostic feature common only to positions 1 and 4). The hair tip of chignon points straight downwards (distinguish from position 1). Nose not distinctly pointed.	All shading lines on face and neck unbroken and strongly defined. All ten shading lines present on forehead six of which extend to front edge. Shading lines on front foot of bust including the point.
Background			In the very rare "premières gravures" examples the background appears almost as solid colour of a heavy dark slated blue with the features of the head deeply shaded. In the "later" examples of earliest stamps all diagonal and vertical lines present and continuous no continuous white diagonal lines, any appearance of a white line is in the form of white dots which are surrounded by colour formed by the diagonal and vertical lines crossing each other (see reference under "Early" Impression to "sticky" printings which applies equally to "Earliest").
Peripheral inscriptions:	Post paid	Large "D" in "PAID".	
	Postage	Lower limb of "E" disproportionately long compared with top limb.	
	Mauritius		
	Two Pence		
Corner ornaments:	S.W.		
	N.W.		
	N.E.		
	S.E.	SE corner ornament positioned low in "box" with lower arms of device all touching lower frame line, left lateral arm joins left frame of "box".	Three strongly defined engraving lines extend into margin of stamp – two into right margin, one into lower margin. – A blue line extends across top of "box" separating a thin section of top of "box" from that containing the device.

Position: **5**

KEY FEATURE		PLATING	IMPRESSION
Queen's head		Right point of base of bust positioned above first "E" of "PENCE" (also in positions 8 and 11).	All shading lines on face and neck unbroken and strongly defined. All ten shading lines present on forehead at least seven extend to front edge. Shading lines on front foot of bust including the point.
Background			In the very rare "premières gravures" examples the background appears almost as solid colour of a heavy dark slated blue with the features of the head deeply shaded. In the "later" examples of earliest stamps all diagonal and vertical lines present and continuous no continuous white diagonal lines, any appearance of a white line is in the form of white dots which are surrounded by colour formed by the diagonal and vertical lines crossing each other (see reference under "Early" Impression to "sticky" printings which applies equally to "Earliest").
Peripheral inscriptions:	Post paid		
	Postage	Indentation of colour at left side of join between top and upright of "T".	
	Mauritius		
	Two Pence	"E" of "PENCE" equally spaced between "P" and "N". Wide space between "O" and "P" in "TWO PENCE". Last "E" of "PENCE" very thin.	
Corner ornaments:	S.W.		
	N.W.		
	N.E.		
	S.E.		

Position: **6**

KEY FEATURE		PLATING	IMPRESSION
Queen's head		Chin exactly opposite "T" in "POST". NB. A diagnostic feature common only to positions 3, 6, 9 and 12. Rear basal end of bust positioned over right limb of "N" in "PENCE". Note. This is the only position where this is so.	All shading lines on face and neck unbroken and strongly defined. Six or more shading lines present on forehead. Shading lines on front foot of bust including the point.
Background			In the very rare "premières gravures" examples the background appears almost as solid colour of a heavy dark slated blue with the features of the head deeply shaded. In the "later" examples of earliest stamps all diagonal and vertical lines present and continuous no continuous white diagonal lines, any appearance of a white line is in the form of white dots which are surrounded by colour formed by the diagonal and vertical lines crossing each other (see reference under "Early" Impression to "sticky" printings which applies equally to "Earliest").
Peripheral inscriptions:	Post paid		
	Postage		
	Mauritius		
	Two Pence	Wide space between last "E" of "PENCE" and SE "box".	
Corner ornaments:	S.W.		
	N.W.		
	N.E.		
	S.E.	Device has two arms of equal length in the shape of a "crabs claw" pointing to NW corner of "box".	

Position: **7**

KEY FEATURE		PLATING	IMPRESSION
Queen's head			All shading lines on face and neck unbroken and strongly defined. Eight shading lines present on forehead all extending to its front edge. Shading lines on front foot of bust including the point.
Background			In the very rare "premières gravures" examples the background appears almost as solid colour of a heavy dark slated blue with the features of the head deeply shaded. In the "later" examples of earliest stamps all diagonal and vertical lines present and continuous no continuous white diagonal lines, any appearance of a white line is in the form of white dots which are surrounded by colour formed by the diagonal and vertical lines crossing each other (see reference under "Early" Impression to "sticky" printings which applies equally to "Earliest").
Peripheral inscriptions:	Post paid		
	Postage		
	Mauritius		
	Two Pence	"O" for "C" in "PENCE". NB. A diagnostic feature for position 7 only.	
Corner ornaments:	S.W.		
	N.W.	Three arms of device join left frame of "box".	
	N.E.	Very large "lozenge" in top right corner of "box" extends almost to centre of "box".	
	S.E.		

Position: **8**

KEY FEATURE		PLATING	IMPRESSION
Queen's head		Right point of base of bust positioned above first "E" of "PENCE" (also in positions 5 and 11).	All shading lines on face and neck unbroken and strongly defined. Six shading lines present on forehead four extending to its front edge. Shading lines on front foot of bust including the point.
Background			In the very rare "premières gravures" examples the background appears almost as solid colour of a heavy dark slated blue with the features of the head deeply shaded. In the "later" examples of earliest stamps all diagonal and vertical lines present and continuous no continuous white diagonal lines, any appearance of a white line is in the form of white dots which are surrounded by colour formed by the diagonal and vertical lines crossing each other (see reference under "Early" Impression to "sticky" printings which applies equally to "Earliest").
Peripheral inscriptions:	Post paid	Large "D" with fat loop.	
	Postage		
	Mauritius		
	Two Pence	Centre arm of first "E" misplaced, short and markedly nearer the lower arm than the upper. Short "C".	
Corner ornaments:	S.W.		
	N.W.		
	N.E.	Top right "lozenge" large and misplaced upwards towards NW.	All vertical lines extend without break from top to bottom of "box".
	S.E.		

Position: **9**

KEY FEATURE		PLATING	IMPRESSION
Queen's head		Chin exactly opposite "T" in "POST". NB. A diagnostic feature common only to positions 3, 6, 9 and 12. The rear outline of bust from nape of neck to "heel" of bust appears humped.	All shading lines on face and neck unbroken and strongly defined. Ten shading lines present on forehead nine extend to its front edge. Shading lines on front foot of bust including the point.
Background			In the very rare "premières gravures" examples the background appears almost as solid colour of a heavy dark slated blue with the features of the head deeply shaded. In the "later" examples of earliest stamps all diagonal and vertical lines present and continuous no continuous white diagonal lines, any appearance of a white line is in the form of white dots which are surrounded by colour formed by the diagonal and vertical lines crossing each other (see reference under "Early" Impression to "sticky" printings which applies equally to "Earliest").
Peripheral inscriptions:	Post paid		
	Postage	Large "T" – The upright is indented on both sides where it joins the cross-piece.	
	Mauritius		
	Two Pence		Thick blue line extends downwards from centre top of "T".
Corner ornaments:	S.W.		
	N.W.	Vertical outer marginal line of "box" extends outside the stamp.	
	N.E.		
	S.E.		

Position: **10**

KEY FEATURE		PLATING	IMPRESSION
Queen's head		Front edge of neck exactly vertical and positioned over top of right limb of "W" in "TWO". NB. This is a diagnostic feature found only in position 10. Note. In position 8, 9 and 11 the front edge of neck is not exactly vertical. No shading lines on tip of foot of bust.	All shading lines on face and neck unbroken and strongly defined. Eight shading lines present on forehead all extend to its front edge. Shading lines on front foot of bust but none near the point.
Background			In the very rare "premières gravures" examples the background appears almost as solid colour of a heavy dark slated blue with the features of the head deeply shaded. In the "later" examples of earliest stamps all diagonal and vertical lines present and continuous no continuous white diagonal lines, any appearance of a white line is in the form of white dots which are surrounded by colour formed by the diagonal and vertical lines crossing each other (see reference under "Early" Impression to "sticky" printings which applies equally to "Earliest").
Peripheral inscriptions:	Post paid		
	Postage	Right top limb of "T" in "POSTAGE" long, narrow and tapering compared with short and fatter left limb.	
	Mauritius	Both "U"s thin.	
	Two Pence		
Corner ornaments:	S.W.		
	N.W.		
	N.E.		
	S.E.	Arms of device asymmetrical so that only three arms extend downwards.	

Position: **11**

KEY FEATURE		PLATING	IMPRESSION
Queen's head		Right point of base of bust positioned above first "E" of "PENCE" (also in positions 5 and 8).	All shading lines on face and neck unbroken and strongly defined. Ten shading lines present on forehead and eight extend to front edge. Shading lines on front foot of bust including the point. The lowest shading line on tip of bust is sharp and clear and joins background at its extremities.
Background			In the very rare "premières gravures" examples the background appears almost as solid colour of a heavy dark slated blue with the features of the head deeply shaded. In the "later" examples of earliest stamps all diagonal and vertical lines present and continuous no continuous white diagonal lines, any appearance of a white line is in the form of white dots which are surrounded by colour formed by the diagonal and vertical lines crossing each other (see reference under "Early" Impression to "sticky" printings which applies equally to "Earliest").
Peripheral inscriptions:	Post paid		
	Postage	"T" closer to "S" than "A", and inclined to right. "T" tall.	
	Mauritius		
	Two Pence	"E" closer to "N" than to "P". The words "Two Pence" are close together.	
Corner ornaments:	S.W.		
	N.W.	Arms of the device, in its sector facing NW, show a wide gap extending towards its centre.	
	N.E.		
	S.E.		

Position: **12**

KEY FEATURE		PLATING	IMPRESSION
Queen's head		Chin exactly opposite "T" in "POST". NB. A diagnostic feature common only to positions 3, 6, 9 and 12.	All shading lines on face and neck unbroken and strongly defined. Ten shading lines present on forehead – nine extend to front edge. Shading lines on front foot of bust including the point.
Background			In the very rare "premières gravures" examples the background appears almost as solid colour of a heavy dark slated blue with the features of the head deeply shaded. In the "later" examples of earliest stamps all diagonal and vertical lines present and continuous no continuous white diagonal lines, any appearance of a white line is in the form of white dots which are surrounded by colour formed by the diagonal and vertical lines crossing each other (see reference under "Early" Impression to "sticky" printings which applies equally to "Earliest").
Peripheral inscriptions:	Post paid		
	Postage	Flat and thin lower limb of "S".	
	Mauritius		
	Two Pence	"T" of "TWO" has very short top and is tightly "sandwiched" between "W" and SW "box".	Thick blue line extends downwards from centre top of "T".
Corner ornaments:	S.W.		
	N.W.		
	N.E.		
	S.E.	Arm of device extends to and touches SE corner of "box".	

Position: **1**

KEY FEATURE		PLATING	IMPRESSION
Queen's head		Corner of mouth does not extend past line of nostril. NB. A diagnostic feature common only to positions 1 and 4. The hair tip of chignon points to nape of neck (distinguish from position 4). Nose pointed.	Shading lines on face and neck show some breakage and weakness in definition. Not more than four shading line on forehead extend to front edge. Shading lines on front foot of bust including the point.
Background			The vertical lines are beginning to weaken and some will show breaks – at these points some short unbroken diagonal white lines appear. In "sticky" printings faults in the constituency of the ink allow random white areas to appear which have no connection with wear on the plate.
Peripheral inscriptions:	Post paid		
	Postage	Long upright to "T".	
	Mauritius		
	Two Pence	Top of "O" absent. Flat top to "P" and loop extruded upwards.	"C" and "E" of "PENCE" not joined.
Corner ornaments:	S.W.		
	N.W.		
	N.E.		
	S.E.		

Position: **2**

KEY FEATURE		PLATING	IMPRESSION
Queen's head		Indentation of background into bust where chin meets neck (also in position 1) and mouth extends past line of nostril.	Shading lines on face and neck show some breakage and weakness in definition. Few shading lines extend to front edge of forehead. Shading lines on front foot of bust do not extend to its point.
Background			The vertical lines are beginning to weaken and some will show breaks – at these points some short unbroken diagonal white lines appear. In "sticky" printings faults in the constituency of the ink allow random white areas to appear which have no connection with wear of the plate.
Peripheral inscriptions:	Post paid		
	Postage	Thin top to "T".	A vertical blue line cuts through the lower loop of "P" near its join with the upright.
	Mauritius		A vertical blue line descends into the top of first upright of "M". A thin white line extends from top of "M" to almost the edge of SE "box".
	Two Pence	All the letters of "Pence" small (as in position 6) and positioned towards the right so that last "E" is close to SE "box" (in contrast to position 6). Upright of last "E" thicker between centre and top arm than the lower.	
Corner ornaments:	S.W.		
	N.W.		
	N.E.		
	S.E.		

Position: **3**

KEY FEATURE		PLATING	IMPRESSION
Queen's head		Chin exactly opposite "T" in "POST". NB. A diagnostic feature common only to positions 3, 6, 9 and 12. A curved line of colour separates rear "heel" of bust from its tip.	Shading lines on face and neck show some breakage and weakness in definition. Few shading lines extend to front edge of forehead. Shading lines on front foot of bust and weak lines may be present at tip.
Background			The vertical lines are beginning to weaken and some will show breaks – this breakdown occurs first below "T" and "P" in "POST PAID" and in front of face – at these points some short unbroken diagonal white lines appear. In "sticky" printings faults in the constituency of the ink allow random white areas to appear which have no connection with the wear of the plate.
Peripheral inscriptions:	Post paid		
	Postage	Flat top to "P".	
	Mauritius		
	Two Pence	Small "C".	A white dot not present above the left upper part of "C".
Corner ornaments:	S.W.		
	N.W.	Device centered to the left so that arms extend to left margin of "box" but leave a wide area of whiteness on right side.	
	N.E.		
	S.E.		

Position: **4**

KEY FEATURE		PLATING	IMPRESSION
Queen's head		Corner of mouth does not extend past the nostril. NB. A diagnostic feature common only to positions 1 and 4. The hair tip of chignon points straight downwards (distinguish from position 1). Nose not distinctly pointed.	Shading lines on face and neck show some breakage and weakness in definition. Five or fewer shading lines extend to front edge of forehead. Shading lines on front foot of bust – the line at tip does not extend to front edge.
Background			The vertical lines are beginning to weaken and some will show breaks – at these points some short unbroken diagonal white lines appear. In "sticky" printings faults in the constituency of the ink allow random white areas to appear which have no connection with the wear of the plate.
Peripheral inscriptions:	Post paid	Large "D" in "PAID".	
	Postage	Lower limb of "E" disproportionately long compared with top limb.	
	Mauritius		
	Two Pence		
Corner ornaments:	S.W.		
	N.W.		
	N.E.		
	S.E.	SE corner ornament positioned low in "box" with lower arms of device all touching lower frame line, left lateral arm joins left frame of "box".	Three strongly defined engraving lines extend into margin of stamp – two into right margin, one into lower margin. – A blue line extends across top of "box" separating a thin section of top of "box" from that containing the device.

Position: **5**

KEY FEATURE		PLATING	IMPRESSION
Queen's head		Right point of base of bust positioned above first "E" of "PENCE" (also in positions 8 and 11). Appearance of "pimple" on tip of nose.	Shading lines on face and neck show some breakage and weakness in definition. Six or fewer shading lines extend to front edge of forehead. Vertical shading present on band of diadem above forehead. Shading lines on front foot of bust mostly broken and only some at most extend to front edge. Seven or more shading lines on neck extend to its front edge.
Background			The vertical lines are beginning to weaken and some will show breaks – at these points some short unbroken diagonal white lines appear. In "sticky" printings faults in the constituency of the ink allow random white areas to appear which have no connection with the wear of the plate.
Peripheral inscriptions:	Post paid		A faint white line is present descending from right arm of "T" and parallel to its upright.
	Postage	Indentation of colour at left side of join between top and upright of "T". Left arm of "T" very short.	
	Mauritius		
	Two Pence	"E" of "PENCE" equally spaced between "P" and "N". Wide space between "O" and "P" in "TWO PENCE". Last "E" of "PENCE" very thin.	
Corner ornaments:	S.W.		All eight vertical lines unbroken except third from left.
	N.W.		One or more arms of the device touch the frame of "box".
	N.E.		
	S.E.		Three arms of device touch the frame of "box".

Position: **6**

KEY FEATURE		PLATING	IMPRESSION
Queen's head		Chin exactly opposite "T" in "POST". NB. A diagnostic feature common only to positions 3, 6, 9 and 12. Rear basal end of bust positioned over right limb of "N" in "PENCE". Note. This is the only position where this is so.	Shading lines on face and neck show some breakage and weakness in definition. Five or fewer shading lines extend to front edge of forehead. Vertical shading present on band of diadem above forehead. Shading lines on front foot of bust including tip. Shading lines of neck extend to front edge.
Background			The vertical lines are beginning to weaken and some will show breaks – at these points some short unbroken diagonal white lines appear. In "sticky" printings faults in the constituency of the ink allow random white areas to appear which have no connection with the wear of the plate.
Peripheral inscriptions:	Post paid		
	Postage		
	Mauritius		
	Two Pence	Wide space between last "E" of "PENCE" and SE "box".	
Corner ornaments:	S.W.		Centre vertical line extends from top of "box" to base line.
	N.W.		
	N.E.		
	S.E.	Device has two arms of equal length in the shape of a "crabs claw" pointing to NW corner of "box".	

Position: **7**

KEY FEATURE		PLATING	IMPRESSION
Queen's head			Shading lines on face and neck show some breakage and weakness in definition. Eight shading lines present on forehead all extend to its front edge. Vertical shading lines present on band of diadem above forehead. All but two shading lines on front foot of bust including tip extend to its front edge. Shading lines of neck extend to front edge.
Background			The vertical lines are beginning to weaken and some will show breaks – at these points some short unbroken diagonal white lines appear. In "sticky" printings faults in the constituency of the ink allow random white areas to appear which have no connection with the wear of the plate.
Peripheral inscriptions:	Post paid		
	Postage		No white area between base of "P" and base of NW "box".
	Mauritius		
	Two Pence	"O" for "C" in "PENCE". NB. A diagnostic feature for position 7 only.	
Corner ornaments:	S.W.		
	N.W.	Three arms of device join left frame of "box".	
	N.E.	Very large "lozenge" in top right corner of "box" extends almost to centre of "box".	
	S.E.		

Position: **8**

KEY FEATURE		PLATING	IMPRESSION
Queen's head		Right point of base of bust positioned above first "E" of "PENCE" (also in positions 5 and 11).	Shading lines on face and neck show some breakage and weakness in definition. Three or fewer shading lines of forehead extend to its front edge. Vertical shading lines present on band of diadem above forehead. The lowest shading line on front foot of bust does not extend to its tip. Shading lines on neck extend to front edge.
Background			The vertical lines are beginning to weaken and some will show breaks – at these points some short unbroken diagonal white lines appear. In "sticky" printings faults in the constituency of the ink allow random white areas to appear which have no connection with the wear of the plate.
Peripheral inscriptions:	Post paid	Large "D" with fat loop.	
	Postage	Area of whiteness between base of "P" and corner of NW "box".	No white horizontal lines at tip of centre arm of "E".
	Mauritius		
	Two Pence	Centre arm of first "E" misplaced, short and markedly nearer the lower arm than the upper. Short "C".	
Corner ornaments:	S.W.		
	N.W.		
	N.E.	Top right "lozenge" large and misplaced upwards towards NW.	Vertical lines do not all extend without break from top to bottom of "box".
	S.E.		

Position: **9**

KEY FEATURE		PLATING	IMPRESSION
Queen's head		Chin exactly opposite "T" in "POST". NB. A diagnostic feature common only to positions 3, 6, 9 and 12. The rear outline of bust from nape of neck to "heel" of bust appears humped.	Shading lines on face and neck show some breakage and weakness in definition. – Most of the ten shading lines present on forehead extend to its front edge. – Vertical shading lines present on band of diadem above forehead. – Few of the shading lines on front foot of bust extend to its front edge. – Incomplete lines present on tip of front foot of bust. – Shading lines of neck extend to front edge.
Background			The vertical lines are beginning to weaken and some will show breaks – at these points some short unbroken diagonal white lines appear. In "sticky" printings faults in the constituency of the ink allow random white areas to appear which have no connection with the wear of the plate.
Peripheral inscriptions:	Post paid		
	Postage	Large "T" – The upright is indented on both sides where it joins the cross-piece.	
	Mauritius		
	Two Pence		No area of whiteness between "O" and "P". Blue line extends downwards from centre top of "T".
Corner ornaments:	S.W.		Vertical lines extend to top of "box".
	N.W.	Vertical outer marginal line of "box" extends outside the stamp.	
	N.E.		
	S.E.		

Position: **10**

KEY FEATURE		PLATING	IMPRESSION
Queen's head		Front edge of neck exactly vertical and positioned over top of right limb of "W" in "TWO". NB. This is a diagnostic feature found only in position 10. Note. In position 8, 9 and 11 the front edge of neck is not exactly vertical.	Shading lines on face and neck show some breakage and weakness in definition. Most of the eight shading lines on forehead extend weakly to its front edge. Vertical shading lines present on band of diadem above forehead. All or some of the shading lines on front foot of bust extend to its front edge. Strong lines on neck extend to front edge.
Background			The vertical lines are beginning to weaken and some will show breaks – at these points some short unbroken diagonal white lines appear. In "sticky" printings faults in the constituency of the ink allow random white areas to appear which have no connection with the wear of the plate.
Peripheral inscriptions:	Post paid		
	Postage	Right top limb of "T" in "POSTAGE" long, narrow and tapering compared with short and fatter left limb.	
	Mauritius	Both "U"s thin.	
	Two Pence		
Corner ornaments:	S.W.		
	N.W.		
	N.E.		
	S.E.	Arms of device asymmetrical so that only three arms extend downwards.	

Position: **11**

KEY FEATURE		PLATING	IMPRESSION
Queen's head		Right point of base of bust positioned above first "E" of "PENCE" (also in positions 5 and 8).	Shading lines on face and neck show some breakage and weakness in definition. Less than eight shading lines on forehead extend to its front edge. Well defined vertical shading lines present on band of diadem above forehead and temple. Some shading lines on front foot of bust extend to its front edge except at the point. Strong lines on neck extend to front edge.
Background			The vertical lines are beginning to weaken and some will show breaks – at these points some short unbroken diagonal white lines appear. In "sticky" printings faults in the constituency of the ink allow random white areas to appear which have no connection with the wear of the plate.
Peripheral inscriptions:	Post paid		
	Postage	"T" closer to "S" than "A", and inclined to right. "T" tall.	
	Mauritius		
	Two Pence	"E" closer to "N" than to "P". The words "Two Pence" are close together.	
Corner ornaments:	S.W.		
	N.W.	Arms of the device, in its sector facing NW, show a wide gap extending towards its centre.	
	N.E.		
	S.E.		

Position: **12**

KEY FEATURE		PLATING	IMPRESSION
Queen's head		Chin exactly opposite "T" in "POST". NB. A diagnostic feature common only to positions 3, 6, 9 and 12.	Shading lines on face and neck show some breakage and weakness in definition. Up to nine shading lines on forehead extend to front edge. Shading lines present on band of diadem above forehead. All shading lines on front foot of bust including the tip may extend to its front edge. Strong lines on neck extend to front edge.
Background			The vertical lines are beginning to weaken and some will show breaks – at these points some short unbroken diagonal white lines appear. In "sticky" printings faults in the constituency of the ink allow random white areas to appear which have no connection with the wear of the plate.
Peripheral inscriptions:	Post paid		
	Postage	Flat and thin lower limb of "S".	
	Mauritius		
	Two Pence	"T" of "TWO" has very short top and is tightly "sandwiched" between "W" and SW "box".	Thick blue line extends downwards from centre top of "T".
Corner ornaments:	S.W.		
	N.W.		
	N.E.		
	S.E.	Arm of device extends to and touches SE corner of "box".	

Position: **1**

KEY FEATURE		PLATING	IMPRESSION
Queen's head		Corner of mouth does not extend past line of nostril. NB. A diagnostic feature common only to positions 1 and 4. – The hair tip of chignon points to nape of neck (distinguish from position 4). – Three or four strongly defined short shading lines present just behind mouth. – Nose pointed.	Some shading lines present in front of check-bone. Shading lines of forehead fragmented or absent. No distinct shading lines present on front foot of bust. No shading lines present on chin. Three of four strongly defined short shading lines present just behind the mouth.
Background			Vertical lines not continuous, where they disappear white diagonal lines appear.
Peripheral inscriptions:	Post paid		
	Postage	Long upright to "T".	
	Mauritius		
	Two Pence	Top of "O" absent. Flat top to "P" and loop extruded upwards.	"C" and "E" of "PENCE" join or very close.
Corner ornaments:	S.W.		The majority of the vertical lines do not quite extend to base line of "box".
	N.W.		
	N.E.		
	S.E.		

Position: **2**

KEY FEATURE		PLATING	IMPRESSION
Queen's head		Indentation of background into bust where chin meets neck (also in position 1) and mouth extends past line of nostril.	Some shading lines present in front of check-bone. Not more than one shading line extends to front edge of forehead. Four at most shading lines on front foot of bust, none at the point. No shading lines present on lower part of chin. Vertical shading lines present on band of diadem above forehead.
Background			Vertical lines not continuous, where they disappear white diagonal lines appear.
Peripheral inscriptions:	Post paid		
	Postage	Thin top to "T".	
	Mauritius		An area of whiteness develops between the top of the "M" and the edge of the SE "box" and extends between them. No vertical blue line present inside top of first upright of "M".
	Two Pence	All the letters of "Pence" small (as in position 6) and positioned towards the right so that last "E" is close to SE "box" (in contrast to position 6). Upright of last "E" thicker between centre and top arm than the lower.	Left arm of "T" in "TWO" does not join SW "box".
Corner ornaments:	S.W.		
	N.W.		
	N.E.		
	S.E.		Five or more "arms" of the device touch the sides of the "box".

Position: **3**

KEY FEATURE		PLATING	IMPRESSION
Queen's head		Chin exactly opposite "T" in "POST". NB. A diagnostic feature common only to positions 3, 6, 9 and 12. A curved line of colour separates rear "heel" of bust from its tip.	Some shading lines present in front of check-bone. No shading lines extend to front edge of forehead. No shading lines present at tip of front foot of bust. Shading lines on band of diadem above forehead absent or indistinct.
Background			Vertical lines not continuous, where they disappear white diagonal lines appear.
Peripheral inscriptions:	Post paid		Area of whiteness developing between "T" and "P".
	Postage	Flat top to "P".	Area of whiteness developing between "E" and NE "box".
	Mauritius		
	Two Pence	Small "C".	A white dot present above the left upper part of "C".
Corner ornaments:	S.W.		
	N.W.	Device centred to the left so that arms extend to left margin of "box" but leave a wide area of whiteness on right side.	
	N.E.		
	S.E.		

Position: **4**

KEY FEATURE		PLATING	IMPRESSION
Queen's head		Corner of mouth does not extend past the nostril. NB. A diagnostic feature common only to positions 1 and 4. The hair tip of chignon points straight downwards (distinguish from position 1). Nose not distinctly pointed.	Some shading lines present in front of check-bone. Shading lines on forehead poorly defined or absent. Shading lines absent or weak on front foot of bust and none on tip. A few indistinct lines on band of diadem above forehead. Six or more shading lines on neck extend to its front edge.
Background			Vertical lines not continuous, where they disappear white diagonal lines appear. Two or more distinct but broken vertical lines present in right top margin area of background adjacent to "IUS" of "MAURITIUS" in addition to remnant vertical lines elsewhere.
Peripheral inscriptions:	Post paid	Large "D" in "PAID".	
	Postage	"P" and "O" join. Lower limb of "E" disproportionately long compared with top limb.	
	Mauritius		
	Two Pence		
Corner ornaments:	S.W.		
	N.W.		
	N.E.		
	S.E.	SE corner ornament positioned low in "box" with lower arms of device all touching lower frame line, left lateral arm joins left frame of "box".	Two strongly defined engraving lines extend into margin of stamp – one into right margin, one into lower margin. – A blue line extends at least halfway across top of "box" from left margin.

Position: **5**

KEY FEATURE		PLATING	IMPRESSION
Queen's head		Right point of base of bust positioned above first "E" of "PENCE" (also in positions 8 and 11). Appearance of pimple on tip of nose.	Some shading lines present in front of check-bone. – Shading lines on forehead absent or indistinct. – No shading lines on point of chin. – Vertical shading lines on band of diadem above forehead absent or indistinct. – Six or fewer shading lines on neck extend to its front edge. – Few if any shading lines on front foot of bust – none at its tip.
Background			Vertical lines not continuous, where they disappear white diagonal lines appear.
Peripheral inscriptions:	Post paid		No white area between "P" and "O". White area developing between "Post" and "Paid".
	Postage	Indentation of colour at left side of join between top and upright of "T". Left arm of "T" very short.	
	Mauritius		
	Two Pence	"E" of "PENCE" equally spaced between "P" and "N". Wide space between "O" and "P" in "TWO PENCE". Last "E" of "PENCE" very thin.	"W" and "O" not joined.
Corner ornaments:	S.W.		Right vertical line does not extend to top of "box".
	N.W.		No part of the device touches the frame of "box".
	N.E.		
	S.E.		One or two arms of device touch the frame of "box".

Position: **6**

KEY FEATURE		PLATING	IMPRESSION
Queen's head		Chin exactly opposite "T" in "POST". NB. A diagnostic feature common only to positions 3, 6, 9 and 12. Rear basal end of bust positioned over right limb of "N" in "PENCE". Note. This is the only position where this is so.	Shading lines present in front of check-bone. – Shading lines on forehead absent or indistinct. – No shading lines on point of chin. – Vertical shading lines on band of diadem above forehead absent or indistinct. – Some shading lines on neck extend to its front edge. – Few if any shading lines on front foot of bust – none at its tip.
Background			Vertical lines not continuous, where they disappear white diagonal lines appear.
Peripheral inscriptions:	Post paid		White area beginning to appear between "D" and NW "box".
	Postage		
	Mauritius		
	Two Pence	Wide space between last "E" of "PENCE" and SE "box".	
Corner ornaments:	S.W.		Centre vertical line does not extend to base line of "box".
	N.W.		
	N.E.		
	S.E.	Device has two arms of equal length in the shape of a "crabs claw" pointing to NW corner of "box".	

Position: **7**

KEY FEATURE		PLATING	IMPRESSION
Queen's head			Shading lines present in front of check-bone. – The eight shading lines on forehead do not all extend to its front edge and may be indistinct. – No shading lines on point of chin. – Vertical shading lines on band of diadem above forehead. – Most shading lines on neck extend to its front edge. – Shading lines on front foot of bust including tip do not extend to front edge.
Background			Vertical lines not continuous, where they disappear white diagonal lines appear.
Peripheral inscriptions:	Post paid		
	Postage		White area between base of "P" and base of NW "box".
	Mauritius		
	Two Pence	"O" for "C" in "PENCE". NB. A diagnostic feature for position 7 only.	Area of whiteness at NW corner of "O" of "PENOE" separated from the "O" itself by a faint blue line.
Corner ornaments:	S.W.		
	N.W.	Three arms of device join left frame of "box".	
	N.E.	Very large "lozenge" in top right corner of "box" extends almost to centre of "box".	
	S.E.		

Position: **8**

KEY FEATURE		PLATING	IMPRESSION
Queen's head		Right point of base of bust positioned above first "E" of "PENCE" (also in positions 5 and 11).	Shading lines present in front of check-bone. Shading lines on forehead do not extend to front edge and are weak or absent. Vertical shading lines on band of diadem above forehead. Most shading lines on neck extend to front edge. Shading lines on front foot of bust are weak or absent.
Background			Vertical lines not continuous, where they disappear white diagonal lines appear.
Peripheral inscriptions:	Post paid	Large "D" with fat loop.	
	Postage	Area of whiteness between base of "P" and corner of NW "box".	White horizontal lines appear at tip of centre arm of "E".
	Mauritius		
	Two Pence	Centre arm of first "E" misplaced, short and markedly nearer the lower arm than the upper. Short "C".	"T" joins or almost joins SW "box".
Corner ornaments:	S.W.		
	N.W.		
	N.E.	Top right "lozenge" large and misplaced upwards towards NW.	
	S.E.		

Position: **9**

KEY FEATURE		PLATING	IMPRESSION
Queen's head		Chin exactly opposite "T" in "POST". NB. A diagnostic feature common only to positions 3, 6, 9 and 12. The rear outline of bust from nape of neck to "heel" of bust appears humped. Nose has rounded shape.	Some shading lines present in front of cheek-bone. Remnants of shading lines on forehead do not extend to front edge. Weak vertical shading lines present on band of diadem above forehead. Many of the broken shading lines on neck reach its front edge. Shading lines on foot of bust mostly or completely absent.
Background			Vertical lines not continuous, where they disappear white diagonal lines appear.
Peripheral inscriptions:	Post paid		
	Postage	Large "T" – The upright is indented on both sides where it joins the cross-piece.	
	Mauritius		
	Two Pence		Area of whiteness developing between "O" and "P". No blue line in centre of top of "T". Triangles of whiteness appear behind top and bottom curve of "C".
Corner ornaments:	S.W.		Vertical lines do not extend to top of "box".
	N.W.	Vertical outer marginal line of "box" extends outside the stamp.	
	N.E.		
	S.E.		

Position: **10**

KEY FEATURE		PLATING	IMPRESSION
Queen's head		Front edge of neck exactly vertical and positioned over top of right limb of "W" in "TWO". NB. This is a diagnostic feature found only in position 10. Note. In position 8, 9 and 11 the front edge of neck is not exactly vertical.	Shading lines present in front of cheek-bone. Remnants of shading lines on forehead do not extend to front edge. Some weak vertical shading lines present on band of diadem above forehead. Shading lines on neck largely unbroken and several may reach front edge. Remnants of shading lines on front foot of bust.
Background			Vertical lines not continuous, where they disappear white diagonal lines appear.
Peripheral inscriptions:	Post paid		
	Postage	Right top limb of "T" in "POSTAGE" long, narrow and tapering compared with short and fatter left limb.	
	Mauritius	Both "U"s thin.	
	Two Pence		;T" almost joins SW "box" and is separated by a thin blue line.
Corner ornaments:	S.W.		
	N.W.		
	N.E.		
	S.E.	Arms of device asymmetrical so that only three arms extend downwards.	

Position: **11**

KEY FEATURE		PLATING	IMPRESSION
Queen's head		Right point of base of bust positioned above first "E" of "PENCE" (also in positions 5 and 8).	Shading lines present in front of check-bone. Few if any shading lines on forehead remain. Remnants of vertical shading lines on band of diadem above forehead. Shading lines on neck largely unbroken and several may reach front edge. Remnants of shading lines on front foot of bust.
Background			Vertical lines not continuous, where they disappear white diagonal lines appear.
Peripheral inscriptions:	Post paid		
	Postage	"T" closer to "S" than "A", and inclined to right. "T" tall.	Front end of lower foot of "E" not joined to a column of whiteness developing between "E" and NE "box".
	Mauritius		"A" and "U" not joined.
	Two Pence	"E" closer to "N" than to "P". The words "Two Pence" are close together.	
Corner ornaments:	S.W.		
	N.W.	Arms of the device, in its sector facing NW, show a wide gap extending towards its centre.	
	N.E.		
	S.E.		

Position: **12**

KEY FEATURE		PLATING	IMPRESSION
Queen's head		Chin exactly opposite "T" in "POST". NB. A diagnostic feature common only to positions 3, 6, 9 and 12.	Shading lines present in front of check-bone. Few if any shading lines on forehead remain. Remnants of vertical shading lines on band of diadem above forehead. Some shading lines on neck may be intact but majority are broken and weak at front edge. Remnants of shading lines on front foot of bust – none at tip.
Background			Vertical lines not continuous, where they disappear white diagonal lines appear.
Peripheral inscriptions:	Post paid		
	Postage	Flat lower limb of "S" widening at tip.	
	Mauritius		
	Two Pence	"T" of "TWO" has very short top and is tightly "sandwiched" between "W" and SW "box".	No thick blue line in centre top of "T". "T" and "W" join. "T" separated from SW "box" by thin blue line.
Corner ornaments:	S.W.		
	N.W.		
	N.E.		
	S.E.	Arm of device extends to and touches SE corner of "box".	

Position: **1**

KEY FEATURE		PLATING	IMPRESSION
Queen's head		Corner of mouth does not extend past line of nostril. NB. A diagnostic feature common only to positions 1 and 4. The hair tip of chignon points to nape of neck (distinguish from position 4). Nose pointed.	Face and neck poorly shaded with none on the face in front of an imaginary vertical line passing through cheek-bone except for three short shading lines just behind mouth which may be present. Shading lines on band of diadem absent above forehead.
Background			White diagonal lines are continuous except just below "Postage" where a few very short vertical lines remain. Area of whiteness developing below "A" in "PAID" in addition to other areas e.g. bottom right corner.
Peripheral inscriptions:	Post paid		<div style="display: flex; align-items: center;"> <div style="flex: 1;"> </div> <div style="font-size: 3em; margin: 0 10px;">}</div> <div style="text-align: center;">All letters identifiable</div> </div>
	Postage	Long upright to "T".	
	Mauritius		
	Two Pence	Top of "O" absent. Flat top to "P" and loop extruded upwards.	
Corner ornaments:	S.W.		
	N.W.		
	N.E.		
	S.E.		

Position: **2**

KEY FEATURE		PLATING	IMPRESSION
Queen's head		Indentation of background into bust where chin meets neck (also in position 1) and mouth extends past line of nostril.	Face and neck poorly shaded with none on the face in front of an imaginary vertical line passing through cheek-bone. Shading lines on band of diadem absent or very indistinct above forehead.
Background			White diagonal lines continuous except possibly at the periphery where a trace of remnant vertical lines may remain.
Peripheral inscriptions:	Post paid		<div style="display: flex; align-items: center;"> <div style="flex: 1;"> </div> <div style="font-size: 3em; margin: 0 10px;">}</div> <div style="text-align: center;">All letters identifiable</div> </div>
	Postage	Thin top to "T".	
	Mauritius		
	Two Pence	All the letters of "Pence" small (as in position 6) and positioned towards the right so that last "E" is close to SE "box" (in contrast to position 6). Upright of last "E" thicker between centre and top arm than the lower.	
Corner ornaments:	S.W.		
	N.W.		
	N.E.		
	S.E.		Not more than two "arms" of the device touch the sides of the "box".

Position: **3**

KEY FEATURE		PLATING	IMPRESSION
Queen's head		Chin exactly opposite "T" in "POST". NB. A diagnostic feature common only to positions 3, 6, 9 and 12.	Face and neck poorly shaded with none on the face in front of an imaginary vertical line passing through cheek-bone. Shading lines on band of diadem absent above forehead. There is no line of colour separating rear "heel" of bust from its tip.
Background			White diagonal lines continuous except possibly at the periphery where a trace of vertical lines may remain.
Peripheral inscriptions:	Post paid		All letters identifiable
	Postage	Flat top to "P".	
	Mauritius		
	Two Pence	Small "C".	
Corner ornaments:	S.W.		
	N.W.	Device centred to the left so that arms extend to left margin of "box" but leave a wide area of whiteness on right side.	
	N.E.		
	S.E.		No arms of device touch side of "box".

Position: **4**

KEY FEATURE		PLATING	IMPRESSION
Queen's head		Corner of mouth does not extend past nostril. NB. A diagnostic feature common only to positions 1 and 4. The hair tip of chignon points straight downwards (distinguish from position 1). Nose not distinctly pointed.	Face and neck poorly shaded with none on the face in front of an imaginary vertical line passing through cheek-bone. Vertical lines on band of diadem absent above forehead. No shading lines on front foot of bust. Of the remaining broken shading lines on neck three or fewer extend to its front edge.
Background			White diagonal lines continuous except possibly at the periphery below "Postage" where a trace of a few vertical lines may remain.
Peripheral inscriptions:	Post paid	Large "D" in "PAID".	All letters identifiable
	Postage	"P" and "O" join. Wedge shaped lower end of "S" extends to below right edge of "O". Lower limb of "E" disproportionately long compared with top limb.	
	Mauritius		
	Two Pence		
Corner ornaments:	S.W.		
	N.W.		
	N.E.		
	S.E.	SE corner ornament positioned low in "box" with lower arms of device all touching lower frame line, left lateral arm joins left frame of "box".	No blue line is present in top of "box".

Position: **5**

KEY FEATURE		PLATING	IMPRESSION
Queen's head		Right point of bust positioned above first "E" of "PENCE" (also in positions 8 and 11). Appearance of pimple on tip of nose.	Face and neck poorly shaded with none on the face in front of an imaginary vertical line passing through cheek-bone. Vertical lines on band of diadem absent above forehead. No shading lines on front foot of bust.
Background			White diagonal lines continuous except where in two small areas traces of vertical lines may remain i.e. right margin and below bust at centre and left.
Peripheral inscriptions:	Post paid		Pronounced white area between "POST" and "PAID". White area between "P" and "O" of "POST".
	Postage	Indentation of colour at left side of join between top and upright of "T". Left arm of "T" very short.	The three arms of "E" merge leaving two central areas of colour.
	Mauritius		"S" becomes more angular.
	Two Pence	"E" of "PENCE" equally spaced between "P" and "N". Wide space between "O" and "P" in "TWO PENCE". Last "E" of "PENCE" very thin.	"T" joins SW "box". "W" and "O" join. White area between "Two" and "Pence".
Corner ornaments:	S.W.		All letters identifiable
	N.W.		
	N.E.		
	S.E.		
			Device entirely separated from frame.

Position: **6**

KEY FEATURE		PLATING	IMPRESSION
Queen's head		Chin exactly opposite "T" in "POST". NB. A diagnostic feature common only to positions 3, 6, 9 and 12. Rear basal end of bust positioned over right limb of "N" in "PENCE". Note. This is the only position where this is so.	Face and neck poorly shaded with none on the face in front of an imaginary vertical line passing through cheek-bone. Vertical lines on band of diadem absent above forehead. No shading lines on front foot of bust. Few if any shading lines on neck extend to its front edge – all are faint.
Background			White diagonal lines continuous except where in small areas traces of vertical lines may remain.
Peripheral inscriptions:	Post paid		Main upright of "P" in "PAID" widens towards its base. White area between "D" and NW "box".
	Postage		
	Mauritius		"U" and "S" join.
	Two Pence	Wide space between last "E" of "PENCE" and SE "box".	White lines appear above "WO PEN" of "TWO PENCE".
Corner ornaments:	S.W.		All letters identifiable
	N.W.		
	N.E.		
	S.E.	Device has two arms of equal length in the shape of a "crabs claw" pointing to NW corner of "box".	

Position: **7**

KEY FEATURE		PLATING	IMPRESSION
Queen's head			Face and neck poorly shaded with, at most only three short lines below eye and one along line of jawbone above under side of chin, in front of an imaginary vertical line passing through cheek-bone. – Vertical lines on band of diadem above forehead absent or indistinct. – No shading lines on front foot of bust. – Few if any shading lines on neck extend to its front edge.
Background			White diagonal lines are continuous except possibly in small areas where traces of vertical lines may remain.
Peripheral inscriptions:	Post paid		All letters identifiable
	Postage		
	Mauritius		
	Two Pence	"O" for "C" in "PENCE". – NB, a diagnostic feature for position 7 only. – Note. Latest impressions of other positions showing extreme wear, especially position 4, may also show "O" for "C".	
Corner ornaments:	S.W.		
	N.W.	Two or fewer arms of device join left frame of "box".	
	N.E.	Very large "lozenge" in top right corner of "box" extends almost to centre of "box".	
	S.E.		

Position: **8**

KEY FEATURE		PLATING	IMPRESSION
Queen's head		Right point of base of bust positioned above first "E" of "PENCE" (also in positions 5 and 11).	Face and neck poorly shaded with none in front of an imaginary vertical line passing through cheek-bone. Vertical lines on band of diadem above forehead absent or indistinct. No shading lines on front foot of bust. Few if any shading lines on neck extend to its front edge.
Background			White diagonal lines continuous except possibly where, in small areas, traces of vertical lines may remain.
Peripheral inscriptions:	Post paid	Large "D" with fat loop.	All letters identifiable
	Postage	Area of whiteness between base of "P" and corner of NW "box".	
	Mauritius		
	Two Pence	Centre arm of first "E" misplaced, short and markedly nearer the lower arm than the upper. Short "C".	
Corner ornaments:	S.W.		
	N.W.		
	N.E.	Top right "lozenge" large and misplaced upwards towards NW.	
	S.E.		

Position: **9**

KEY FEATURE		PLATING	IMPRESSION
Queen's head		Chin exactly opposite "T" in "POST". NB. A diagnostic feature common only to positions 3, 6, 9 and 12. The rear outline of bust from nape of neck to "heel" of bust appears humped. Nose has rounded shape.	Face and neck poorly shaded with none in front of an imaginary vertical line passing through cheek-bone. Vertical lines on band of diadem above forehead very weak or absent. No shading lines on front foot of bust.
Background			White diagonal lines continuous except possibly in small areas where traces of vertical lines may remain.
Peripheral inscriptions:	Post paid		<div style="display: flex; align-items: center; justify-content: center;"> <div style="font-size: 4em; margin-right: 10px;">}</div> <div> <p>All letters identifiable</p> </div> </div>
	Postage	Large "T" – the upright is indented on both sides where it joins the cross-piece.	
	Mauritius		
	Two Pence		
Corner ornaments:	S.W.		
	N.W.	Vertical outer marginal line of "box" extends outside the stamp.	
	N.E.		
	S.E.		

Position: **10**

KEY FEATURE		PLATING	IMPRESSION
Queen's head		Front edge of neck exactly vertical and positioned over top of right limb of "W" in "TWO". NB. This is a diagnostic feature common only to position 10. Note. In positions 8, 9 and 11 the front edge of neck is not exactly vertical.	Face and neck poorly shaded with not more than two shading lines in front of an imaginary vertical line passing through cheek-bone. Vertical lines on band of diadem above forehead absent. No shading lines on front foot of bust. Few if any shading lines on neck extend to its front edge.
Background			White diagonal lines continuous except possibly in small areas where traces of vertical lines remain.
Peripheral inscriptions:	Post paid		<div style="display: flex; align-items: center; justify-content: center;"> <div style="font-size: 4em; margin-right: 10px;">}</div> <div> <p>All letters identifiable</p> </div> </div>
	Postage	Right top limb of "T" in "POSTAGE" long, narrow and tapering compared with short and fatter left limb.	
	Mauritius	Both "U"s thin.	
	Two Pence		
Corner ornaments:	S.W.		
	N.W.		
	N.E.		
	S.E.	Arms of device asymmetrical so that only three arms extend downwards.	

Position: **11**

KEY FEATURE		PLATING	IMPRESSION
Queen's head		Right point of base of bust positioned above first "E" of "PENCE" (also in positions 5 and 8).	Face and neck poorly shaded with no shading lines in front of an imaginary vertical line passing through cheek-bone. Vertical lines on band of diadem above forehead absent. No shading lines on front foot of bust. Few if any shading lines on neck extend to its front edge.
Background			White diagonal lines continuous except possibly in small areas where traces of vertical lines remain.
Peripheral inscriptions:	Post paid		"P" and "O" join or almost joined by white line.
	Postage	"T" closer to "S" than "A" and inclined to right. "T" tall.	Front end of lower foot of "E" joined to a column of whiteness developing between "E" and NE "box".
	Mauritius		"A" and "U" join.
	Two Pence	"E" closer to "N" than to "P". The words "Two Pence" are close together.	
Corner ornaments:	S.W.		
	N.W.	Arms of the device, in its sector facing NW, show a wide gap extending towards its centre.	
	N.E.		
	S.E.		

Position: **12**

KEY FEATURE		PLATING	IMPRESSION
Queen's head		Chin exactly opposite "T" in "POST". NB. A diagnostic feature common only to positions 3, 6, 9 and 12.	Face and neck poorly shaded with no shading lines in front of an imaginary vertical line passing through cheek-bone. Vertical lines on band of diadem above forehead absent. No shading lines on front foot of bust. Remnant shading lines on neck do not extend to front edge.
Background			White diagonal lines continuous except possibly in small areas where traces of vertical lines remain.
Peripheral inscriptions:	Post paid		"P" and "A" join.
	Postage	Flat lower limb of "S" widening at tip.	
	Mauritius	Top and outer curve of "S" form a right angle. "S" does not touch any border areas.	Top and outer curve of "S" form a right angle.
	Two Pence	"T" of "TWO" has very short top and is tightly "sandwiched" between "W" and SW "box".	"T" joins SW "box".
Corner ornaments:	S.W.		
	N.W.		
	N.E.		
	S.E.	Arm of device extends to and touches SE corner of "box".	

Position: **1**

KEY FEATURE		PLATING	IMPRESSION
Queen's head			The visible parts restricted at most to outline of head, the eye, nostril, ear, position of diadem, kiss-curl and a few strands of hair.
Background			Some or most of the background shading lines worn away to give areas of colourless paper.
Peripheral inscriptions:	Post paid		<div> </div> <div>Some of the letters are so worn they are unidentifiable</div>
	Postage	An area of whiteness between "E" of "POSTAGE" and NE "box" joins the "E" to enclose a central area of blue in the shape of the Roman numeral I. – Long upright to "T".	
	Mauritius		
	Two Pence	Top of "O" absent. Triangle of whiteness develops between "T" and "W". "T" joins SW "box".	
Corner ornaments:	S.W.		Vertical lines absent or very faint.
	N.W.		
	N.E.		Vertical lines absent or very faint.
	S.E.		

Position: **2**

KEY FEATURE		PLATING	IMPRESSION
Queen's head			The visible parts restricted at most to outline of head, the eye, nostril, ear, position of diadem, kiss-curl and a few strands of hair.
Background			Some or most of the background shading lines worn away to give areas of colourless paper.
Peripheral inscriptions:	Post paid		<div> </div> <div>Some of the letters are so worn they are unidentifiable</div>
	Postage	Thin top to "T".	
	Mauritius	Area of whiteness extends downward from right leg of "M" through SE "box" into bottom margin.	
	Two Pence	All the letters of "Pence" small (as in position 6) and positioned towards the right so that last "E" is close to SE "box" (in contrast to position 6). Upright of last "E" thicker between centre and top arm than the lower.	
Corner ornaments:	S.W.		
	N.W.		
	N.E.		
	S.E.		

Position: **3**

KEY FEATURE		PLATING	IMPRESSION
Queen's head		Chin exactly opposite "T" in "POST". NB. A diagnostic feature common only to positions 3, 6, 9 and 12.	The visible parts restricted at most to outline of head, the eye, nostril, ear, position of diadem, a few strands of hair and a few remnants of shading lines at back of neck.
Background			Some or most of the background shading lines worn away to give areas of colourless paper.
Peripheral inscriptions:	Post paid		<div> <div></div> <div>Some of the letters are so worn they are unidentifiable</div> </div>
	Postage	Flat top to "P".	
	Mauritius		
	Two Pence	Small "C".	
Corner ornaments:	S.W.		
	N.W.	Device centred to the left so that arms extend close to left margin of "box" leaving a wide area of whiteness on right side.	
	N.E.		
	S.E.		

Position: **4**

KEY FEATURE		PLATING	IMPRESSION
Queen's head			The visible parts restricted at most to outline of head, the eye, the eyebrow, nostril, ear, kiss-curl, position of diadem and a few strands of hair.
Background			Some or most of the background shading lines worn away to give areas of colourless paper.
Peripheral inscriptions:	Post paid	Large "D" in "PAID".	<div> <div></div> <div>Some of the letters are so worn they are unidentifiable</div> </div>
	Postage	"P" and "O" join.	
	Mauritius		
	Two Pence	The arms of "C" tend to close together giving the appearance of an "O" not to be confused with position 7. – The words "Two" and "Pence" are close together in position 4 (distinguish between position 7).	
Corner ornaments:	S.W.		
	N.W.		
	N.E.		
	S.E.	SE corner ornament positioned low in "box" with lower arms of device close to or touching lower frame line, left lateral arm joins left frame of "box".	

Position: **5**

KEY FEATURE		PLATING	IMPRESSION
Queen's head		Right point of base positioned above first "E" of "PENCE" (also in positions 8 and 11).	The visible parts restricted at most to outline of head, the eye, the eyebrow, nostril, ear, position of diadem, a few strands of hair and a few shading lines at back of neck.
Background			Some or most of the background shading lines worn away to give areas of colourless paper.
Peripheral inscriptions:	Post paid		"T" becomes unrecognizable.
	Postage	Indentation of colour at left side of join between top and upright of "T". Left arm of "T" very short. "E" becomes a square of colourless paper.	"E" becomes unrecognizable.
	Mauritius		
	Two Pence	"E" of "PENCE" equally spaced between "P" and "N". Wide space between "O" and "P" in "TWO PENCE". Last "E" of "PENCE" very thin.	
			Some of the letters are so worn they are unidentifiable
Corner ornaments:	S.W.		
	N.W.		
	N.E.		
	S.E.		

Position: **6**

KEY FEATURE		PLATING	IMPRESSION
Queen's head		Chin exactly opposite "T" in "POST". NB. A diagnostic feature common only to positions 3, 6, 9 and 12. Rear basal end of bust positioned over right limb of "N" in "PENCE". Note. This is the only position where this is so.	The visible parts restricted at most to outline of head, the eye, nostril, kiss-curl, ear, position of diadem, a few strands of hair and a few shading lines at back of neck.
Background			Some or most of the background shading lines worn away to give areas of colourless paper.
Peripheral inscriptions:	Post paid		
	Postage		
	Mauritius		
	Two Pence	Wide space between last "E" of "PENCE" and SE "box".	The letters of "Pence" become unrecognizable.
			Some of the letters are so worn they are unidentifiable
Corner ornaments:	S.W.		
	N.W.		
	N.E.		
	S.E.	Device has two arms of equal length in the shape of a "crabs claw" pointing to NW corner of "box".	

Position: **7**

KEY FEATURE		PLATING	IMPRESSION
Queen's head			The visible parts restricted at most to outline of head, position of diadem, and a few strands of hair.
Background			Some or most of the background shading lines worn away to give areas of colourless paper.
Peripheral inscriptions:	Post paid		<div> </div> <div>Some of the letters are so worn they are unidentifiable</div>
	Postage		
	Mauritius		
	Two Pence	"O" for "C" in "PENCE". – NB. A diagnostic feature for position 7 only. Note. Latest impressions of other positions showing extreme wear, especially position 4, may also show "O" for "C".	
Corner ornaments:	S.W.		
	N.W.		
	N.E.	Very large "lozenge" in top right corner of "box" extends almost to centre of "box".	
	S.E.		

Position: **8**

KEY FEATURE		PLATING	IMPRESSION
Queen's head		Right point of base of bust positioned above first "E" of "PENCE" (also in positions 5 and 11).	The visible parts restricted at most to outline of head, the eye, nostril, eyebrow, position of diadem, and a few strands of hair.
Background			Some or most of the background shading lines worn away to give areas of colourless paper.
Peripheral inscriptions:	Post paid	Large "D" with fat loop.	<div> </div> <div>Some of the letters are so worn they are unidentifiable</div>
	Postage	Area of whiteness between base of "P" and corner of NW "box".	
	Mauritius		
	Two Pence	Centre arm of first "E" misplaced, short and markedly nearer the lower arm than the upper. Short "C".	
Corner ornaments:	S.W.		
	N.W.		
	N.E.	Top right "lozenge" large and misplaced upwards NW.	
	S.E.		

Position: **9**

KEY FEATURE		PLATING	IMPRESSION
Queen's head		Chin exactly opposite "T" in "POST". NB. A diagnostic feature common only to positions 3, 6, 9 and 12.	The visible parts restricted at most to outline of head, position of diadem and a few strands of hair.
Background			Some or most of the background shading lines worn away to give areas of colourless paper.
Peripheral inscriptions:	Post paid		"P", "O" and "S" join. "T" and "D" become unrecognizable.
	Postage	Large "T" with wide upright.	
	Mauritius	First "U" in shape of a flat topped "O". Second "U" normal.	
	Two Pence	"C" has "straight back" – no curve visible.	"P" and "E" join. No central area of colour in loop of "P".
			Some of the letters are so worn they are unidentifiable
Corner ornaments:	S.W.		
	N.W.	Vertical outer marginal line of "box" extends outside the stamp.	
	N.E.		
	S.E.		

Position: **10**

KEY FEATURE		PLATING	IMPRESSION
Queen's head		Front edge of neck exactly vertical and positioned over top of right limb of "W" in "TWO". NB. This is a diagnostic feature found only in position 10. Note. In positions 8, 9 and 11 the front edge of neck is not exactly vertical.	The visible parts restricted at most to outline of head, eye, nostril, position of diadem and a few strands of hair.
Background			Some or most of the background shading lines worn away to give areas of colourless paper.
Peripheral inscriptions:	Post paid		"P" and "O" join.
	Postage	Right top limb of "T" in "POSTAGE" long, narrow and tapering compared with short and fatter left limb.	"P" and "O" join.
	Mauritius	Both "U"s thin.	
	Two Pence		"E"s become unrecognizable.
			Some of the letters are so worn they are unidentifiable
Corner ornaments:	S.W.		
	N.W.		
	N.E.		
	S.E.	Arms of device asymmetrical so that only three arms extend downwards.	

Position: **11**

KEY FEATURE		PLATING	IMPRESSION
Queen's head		Right point of base positioned above first "E" of "PENCE" (also in positions 5 and 8).	The visible parts restricted at most to outline of head, eye, position of diadem and a few strands of hair.
Background			Some or most of the background shading lines worn away to give areas of colourless paper.
Peripheral inscriptions:	Post paid		Some of the letters are so worn they are unidentifiable
	Postage	"T" closer to "S" than "A" and inclined to right. "T" tall.	
	Mauritius		
	Two Pence	"E" closer to "N" than to "P". The words "Two Pence" are close together.	
Corner ornaments:	S.W.		
	N.W.	Arms of the device, in its sector facing NW, show a wide gap extending towards its centre.	
	N.E.		
	S.E.		

Position: **12**

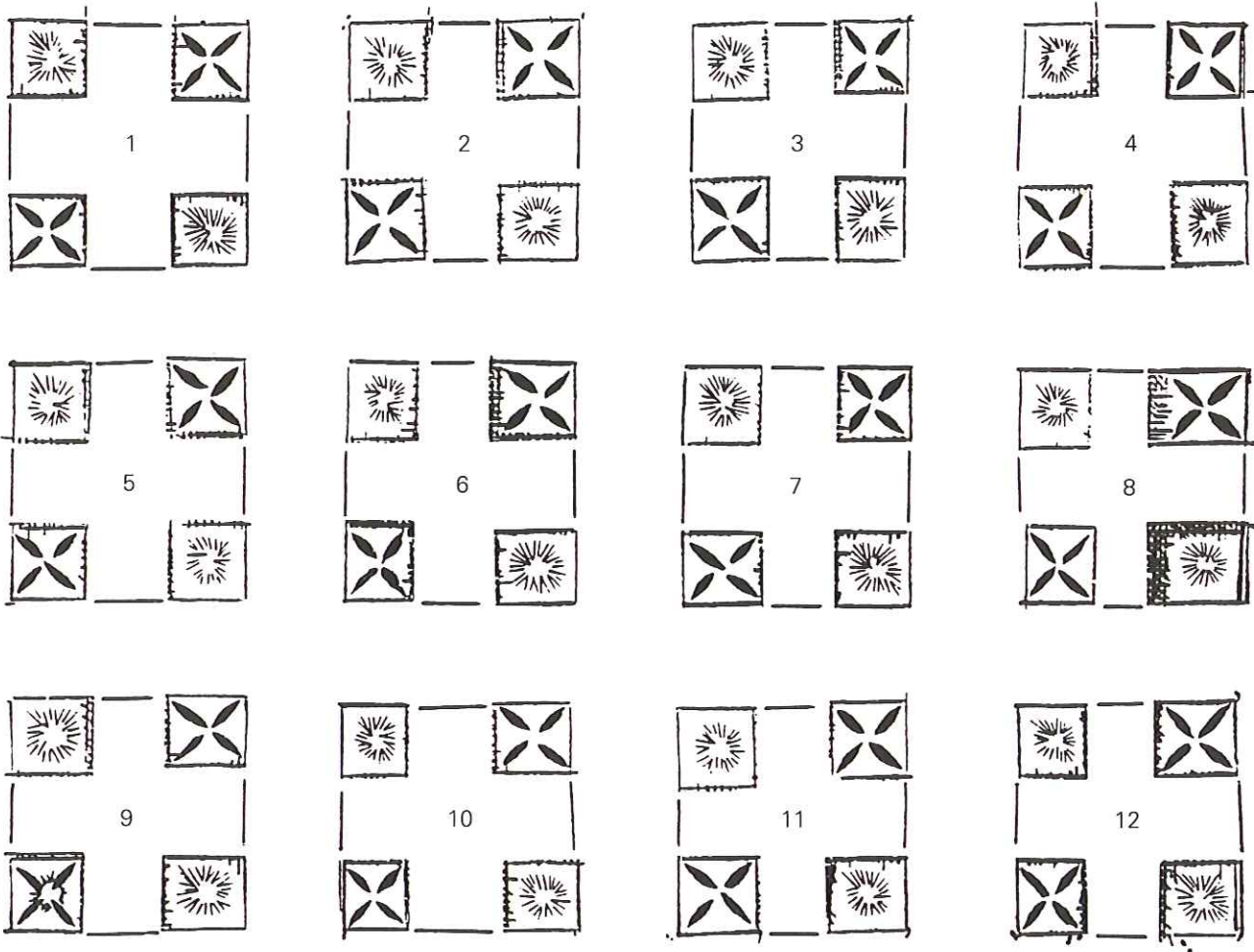
KEY FEATURE		PLATING	IMPRESSION
Queen's head		Chin exactly opposite "T" in "POST". NB. A diagnostic feature common only to positions 3, 6, 9 and 12.	The visible parts restricted at most to outline of head, eye, position of diadem and a few strands of hair.
Background			Some or most of the background shading lines worn away to give areas of colourless paper.
Peripheral inscriptions:	Post paid		Some of the letters are so worn they are unidentifiable
	Postage		
	Mauritius	Top and outer upper curve of "S" form a right angle. "S" does not touch any border areas.	
	Two Pence	"T" of "TWO" has very short top and is tightly "sandwiched" between "W" and SW "box".	
Corner ornaments:	S.W.		
	N.W.		
	N.E.		
	S.E.	Arm of device extends to SE corner of "box".	

The Lapirot Issue



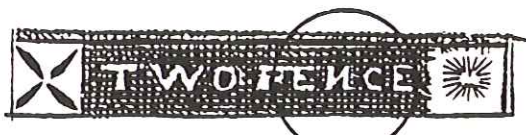
Denomination:	Two Pence.
Engraver and printer:	Jules Lapirot at Port Louis, Mauritius.
Printing Format:	Engraved on a copper plate with three horizontal rows of four stamps. The twelve stamps on the plate were engraved individually so that each has differences in its engraving. This enables every stamp to be identified as originating from one of the twelve position on the plate.
Re Engraving:	By October 1859 the plate had become sufficiently worn for it to be re-engraved by a person or persons unknown, to produce a "Retouched" plate.
Date of Original Issue:	March 1859.
Date of Re-Engraving:	Before 9th November 1859.
Perforation:	Imperforate.
Paper:	Variable (very delicate).
Impressions:	Three states of impression are recognised plus the addition of the "Retouched" impression.

Plating the Lapirot Issue

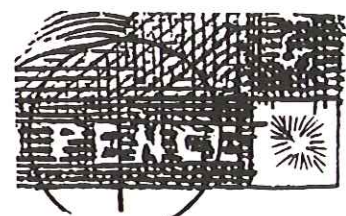


Typical versions of the corner ornaments which are peculiar to each individual plate position.

Two distinguishing features which are unique to the Positions stated:

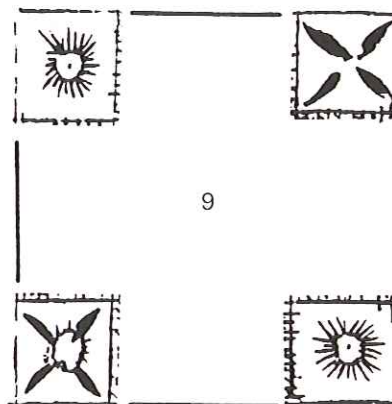
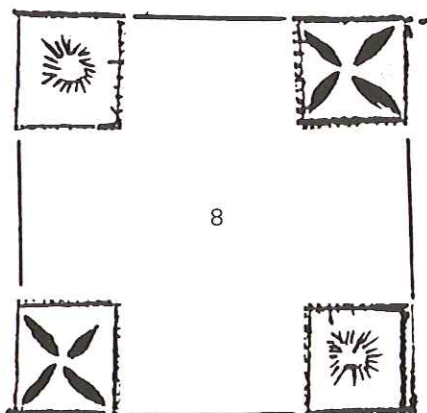
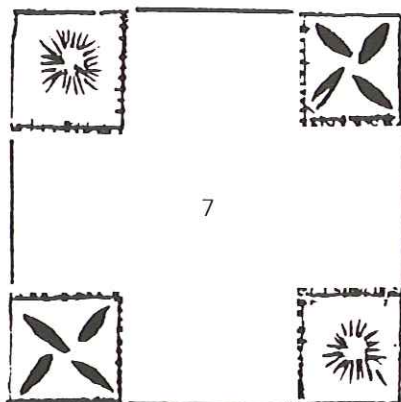
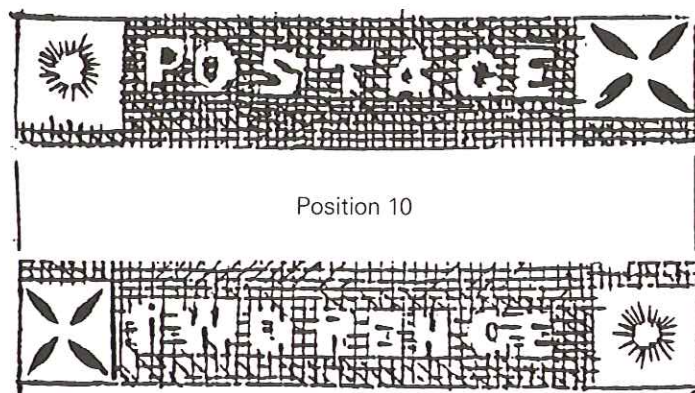


Position 8



Position 7

Stamps from the Retouched Plate



Position: 1

Impression: Early

Queen's Head	Facial features well-defined. Up to eight partial or complete vertical lines on band of diadem. Upper lip clearly defined. Two or more curved lines following curve of throat. Six lines descending from hairline between ear and base of chignon. Six dots in angle of jaw.
Background	Diagonal, vertical and horizontal lines all complete, or almost so, giving the appearance of an intact mesh. In this engraving there is a natural weakness in the shading lines between the chignon and nape of neck, in front of chin and mouth, below bust and extreme margin below "RITIUS" of "MAURITIUS".
Peripheral inscriptions:	<div>Post paid</div>
	<div>Postage</div>
	<div>Mauritius</div>
	<div>Two Pence</div>
Corner ornaments:	<div>S.W.</div>
	<div>N.W.</div>
	<div>N.E.</div>
	<div>S.E.</div>

Impression: Intermediate

Queen's Head	Facial features mostly well-defined as in the "Early," except for: no vertical lines on band of diadem; less than six lines descend from hairline between ear and base of chignon; less than six dots in angle of jaw; front profile line of face beginning to break down so that parts of the face merge with background.
Background	Diagonal, vertical and horizontal lines not all complete – the line breakage becoming more pronounced in the lower half. The background no longer gives the appearance of an intact mesh.
Peripheral inscriptions:	<div>Post paid</div>
	<div>Postage</div>
	<div>Mauritius</div>
	<div>Two Pence</div>
Corner ornaments:	<div>S.W.</div>
	<div>N.W.</div>
	<div>N.E.</div>
	<div>S.E.</div>

Impression: Worn

Queen's Head	Facial features not clearly defined. Front profile line of the face has broken down between top of head and front tip of base of bust so that at most it is present around the mouth, top of nose and part of forehead. Where breakdown occurs the head merges with background. The pupil of the eye is ill-defined. No lines descend from hairline between ear and base of chignon.
Background	Diagonal, vertical and horizontal lines all, or almost all, broken and partially absent to allow areas of whiteness to appear.
Peripheral inscriptions:	<div>Post paid</div>
	<div>Postage</div>
	<div>Mauritius</div>
	<div>Two Pence</div>
Corner ornaments:	<div>S.W.</div>
	<div>N.W.</div>
	<div>N.E.</div>
	<div>S.E.</div>

Some or all letters difficult to read or are indecipherable

Position : 2

Impression : Early

Queen's Head	Facial features well-defined. Ten or more vertical lines on band of diadem. Two curved lines arise from right corner of base of bust and follow profile of nape of neck upwards to lines descending from hairline at base of chignon – they do not meet. Four short diagonal lines arise from front margin of base of bust below throat. The earliest printings of this impression have vertical lines on base of bust.
Background	Diagonal, vertical and horizontal lines all complete, or almost so, giving the appearance of an intact mesh. There are no enhanced horizontal lines in front of chin.
Peripheral inscriptions:	Post paid
	Postage
	Mauritius
	Two Pence
Corner ornaments:	S.W.
	N.W.
	N.E.
	S.E.

Impression : Intermediate

Queen's Head	Facial features mostly well-defined as in the "Early" except for: less than ten vertical lines on band of diadem only one is unbroken; no lines run parallel with the profile line of neck at right base of bust; front profile line of face beginning to break down so that parts of the face merge with background; Lines not present, or very faint, at front margin of base of bust below throat. Two lines present between rear of eyebrow and eye.
Background	Diagonal, vertical and horizontal lines not all complete. The background no longer gives the appearance of an intact mesh. Three or more enhanced horizontal lines present level with chin and three vertical lines project from nose.
Peripheral inscriptions:	Post paid
	Postage
	Mauritius
	Two Pence
Corner ornaments:	S.W.
	N.W.
	N.E.
	S.E.

Impression : Worn

Queen's Head	Facial features not clearly defined. Front profile line of the face has broken down between top of head and front tip of base of bust so that at most it is present at forehead and neck. Where breakdown occurs the head merges with the background. Two lines not present or very faint between rear of eyebrow and eye.
Background	Diagonal, vertical and horizontal lines all, or almost all, broken and partially absent to allow areas of whiteness to appear.
Peripheral inscriptions:	Post paid
	Postage
	Mauritius
	Two Pence
Corner ornaments:	S.W.
	N.W.
	N.E.
	S.E.

Position: **3**

Impression: **Early**

Queen's Head		Facial features well-defined. Vertical lines present on band of diadem. Oblong unengraved design fault clearly defined at top of nose and brow. Several diagonal lines present between front basal point of bust and throat.
Background		Diagonal, vertical and horizontal lines all complete, or almost so, giving the appearance of an intact mesh. In this engraving there is a natural weakness in the shading lines at the extreme right margin below "MAURITIUS".
Peripheral inscriptions:	Post paid	All clearly defined
	Postage	
	Mauritius	
	Two Pence	
Corner ornaments:	S.W.	
	N.W.	
	N.E.	
	S.E.	

Impression: **Intermediate**

Queen's Head		Facial features mostly well-defined as in the "Early" except for: no vertical lines on band of diadem; oblong unengraved design fault merges into background and not clearly defined; diagonal lines absent or very weak between front basal point of bust and throat. Front profile line of face beginning to break down so that parts of the face merge with background.
Background		Diagonal, vertical and horizontal lines not all complete. The background no longer gives the appearance of an intact mesh.
Peripheral inscriptions:	Post paid	All clearly defined
	Postage	
	Mauritius	
	Two Pence	
Corner ornaments:	S.W.	
	N.W.	
	N.E.	
	S.E.	

Impression: **Worn**

Queen's Head		Facial features not clearly defined. The front profile line of the face has broken down between top of head and front tip of base of bust so that at most it is present at forehead and from chin to throat. Where breakdown occurs the head merges with the background.
Background		Diagonal, vertical and horizontal lines all, or almost all, broken and partially absent to allow areas of whiteness to appear.
Peripheral inscriptions:	Post paid	Some or all letters difficult to read or are indecipherable
	Postage	
	Mauritius	
	Two Pence	
Corner ornaments:	S.W.	
	N.W.	
	N.E.	
	S.E.	

Position : **4**

Impression : **Early**

Queen's Head	Facial features well-defined. Vertical lines present on band of diadem. Two or more curved lines arise from right corner of base of bust and follow profile of nape of neck upwards to lines descending from hairline at base of chignon.
Background	Diagonal, vertical and horizontal lines all complete, or almost so, giving the appearance of an intact mesh.
Peripheral inscriptions:	Post paid
	Postage
	Mauritius
	Two Pence
Corner ornaments:	S.W.
	N.W.
	N.E.
	S.E.

Impression : **Intermediate**

Queen's Head	Facial features mostly well-defined as in the "Early" except for: vertical lines on band of diadem absent or very faint; lines not present at front margin of base of bust below throat. Front profile line of face beginning to break down so that parts of the face merge with background.
Background	Diagonal, vertical and horizontal lines not all complete. The background no longer gives the appearance of an intact mesh.
Peripheral inscriptions:	Post paid
	Postage
	Mauritius
	Two Pence
Corner ornaments:	S.W.
	N.W.
	N.E.
	S.E.

Impression : **Worn**

Queen's Head	Facial features not clearly defined. Front profile line of face has broken down between top of head and front tip of base of bust. Where breakdown occurs the head merges with the background.
Background	Diagonal, vertical and horizontal lines all, or almost all, broken and partially absent to allow areas of whiteness to appear.
Peripheral inscriptions:	Post paid
	Postage
	Mauritius
	Two Pence
Corner ornaments:	S.W.
	N.W.
	N.E.
	S.E.

Position: **5**Impression: **Early**

Queen's Head	Facial features well-defined. Up to eleven partial or complete vertical lines on band of diadem. Two vertical lines on forehead. Two or more curved lines arise from right corner of base of bust and follow profile of nape of neck upwards to lines descending from hairline at base of chignon.
Background	Diagonal, vertical and horizontal lines all complete, or almost so, giving the appearance of an intact mesh.
Peripheral inscriptions:	Post paid
	Postage
	Mauritius
	Two Pence
Corner ornaments:	S.W.
	N.W.
	N.E.
	S.E.

Impression: **Intermediate**

Queen's Head	Facial features mostly well-defined as in the "Early," except for: vertical lines on band of diadem absent or weakly defined; no curved lines run parallel with the profile line of neck at right base of bust. Front profile line of face beginning to break down so that parts of the face in region of the nose merge with background.
Background	Diagonal, vertical and horizontal lines not all complete. The background no longer gives the appearance of an intact mesh.
Peripheral inscriptions:	Post paid
	Postage
	Mauritius
	Two Pence
Corner ornaments:	S.W.
	N.W.
	N.E.
	S.E.

Impression: **Worn**

Queen's Head	Facial features not clearly defined. The front profile line of face has started to break down between top of head and front tip of base of bust so that at most it is present at diadem, forehead and from lower lip to throat. Where breakdown occurs the head merges with the background.
Background	Diagonal, vertical and horizontal lines all, or almost all, broken and partially absent to allow areas of whiteness to appear.
Peripheral inscriptions:	Post paid
	Postage
	Mauritius
	Two Pence
Corner ornaments:	S.W.
	N.W.
	N.E.
	S.E.

Some or all letters difficult to read or are indiscipherable

Position: 6

Impression: Early

Queen's Head		Facial features well-defined. Five of the ten vertical lines on band of diadem complete. Four lines at right corner of base of bust follow profile of nape of neck upwards to lines descending from hairline at base of chignon.
Background		Diagonal, vertical and horizontal lines all complete, or almost so, giving the appearance of an intact mesh. In this engraving there is a natural weakness in the shading lines of the background below "POS-TAGE".
Peripheral inscriptions:	Post paid	All clearly defined
	Postage	
	Mauritius	
	Two Pence	
Corner ornaments:	S.W.	
	N.W.	
	N.E.	
	S.E.	

Impression: Intermediate

Queen's Head		Facial features mostly well-defined as in the "Early" except for: vertical lines on band of diadem absent or weakly defined, few complete; not more than one line runs parallel with the profile line of neck at right base of bust. Front profile line at brow broken down so that brow and bridge of nose merge with background.
Background		Diagonal, vertical and horizontal lines not all complete. The background no longer gives the appearance of an intact mesh.
Peripheral inscriptions:	Post paid	All clearly defined
	Postage	
	Mauritius	
	Two Pence	
Corner ornaments:	S.W.	
	N.W.	
	N.E.	
	S.E.	

Impression: Worn

Queen's Head		Facial features not clearly defined. Front profile line of face has broken down between top of head and front tip of base of bust so that at most it is present around the lips, front of chin and throat. Where breakdown occurs the head merges with background.
Background		Diagonal, vertical and horizontal lines all, or almost all, broken and partially absent to allow areas of whiteness to appear.
Peripheral inscriptions:	Post paid	Some or all letters difficult to read or are indecipherable
	Postage	
	Mauritius	
	Two Pence	
Corner ornaments:	S.W.	
	N.W.	
	N.E.	
	S.E.	

Position : **7**

Impression : **Early**

Queen's Head		Facial features well-defined. At least seven of the vertical lines on band of diadem complete. Up to six small circles behind ear and below hairline. Several lines descend from hairline at base of chin, at least one extends more than halfway to base of bust.
Background		Diagonal, vertical and horizontal lines all complete, or almost so, giving the appearance of an intact mesh.
Peripheral inscriptions:	Post paid	All clearly defined
	Postage	
	Mauritius	
	Two Pence	
Corner ornaments:	S.W.	
	N.W.	
	N.E.	
	S.E.	

Impression : **Intermediate**

Queen's Head		Facial features mostly well-defined as in the "Early", except for: fewer than seven vertical lines on band of diadem complete; up to four lines descend from hairline at base of chin, and none extend to half way towards base of bust; remnants of small circles may be present behind ear and below hairline. Front profile line of face beginning to break down so that parts of the face merge with background.
Background		Diagonal, vertical and horizontal lines not all complete. The background no longer gives the appearance of an intact mesh.
Peripheral inscriptions:	Post paid	All clearly defined
	Postage	
	Mauritius	
	Two Pence	
Corner ornaments:	S.W.	
	N.W.	
	N.E.	
	S.E.	

Impression : **Worn**

Queen's Head		Facial features not clearly defined. The front profile line of the face has started to break down between top of head and front tip of base of bust so that at most it is present at diadem, upper part of forehead, mouth to chin and tip of base of bust. Where breakdown occurs the head merges with the background.
Background		Diagonal, vertical and horizontal lines all, or almost all, broken and partially absent to allow areas of whiteness to appear.
Peripheral inscriptions:	Post paid	Some or all letters difficult to read or are indecipherable
	Postage	
	Mauritius	
	Two Pence	
Corner ornaments:	S.W.	
	N.W.	
	N.E.	
	S.E.	

Position: 8

Impression : Early

Queen's Head		Facial features well-defined. Vertical lines on band of diadem absent or very faint. Two lines at right corner of base of bust follow profile of nape of neck but do not extend halfway to hairline.			
Background		Diagonal, vertical and horizontal lines all complete, or almost so, giving the appearance of an intact mesh. In this engraving there is a natural weakness in the shading lines of the background to the left of "MAURITIUS".			
Peripheral inscriptions:	Post paid	All clearly defined			
	Postage				
	Mauritius				
	Two Pence				
Corner ornaments:	S.W.				
	N.W.				
	N.E.				
	S.E.				

Impression : Intermediate

Queen's Head		Facial features mostly well-defined as in the "Early", except for: no lines run parallel with the profile of neck at right base of bust. Front profile line of face beginning to break down so that top of head, diadem, and forehead merge with background.			
Background		Diagonal, vertical and horizontal lines not all complete. The background no longer gives the appearance of an intact mesh.			
Peripheral inscriptions:	Post paid	All clearly defined			
	Postage				
	Mauritius				
	Two Pence				
Corner ornaments:	S.W.				
	N.W.				
	N.E.				
	S.E.				

Impression : Worn

Queen's Head		Facial features not clearly defined. Front profile line of face has broken down between top of head and front tip of base of bust. Where breakdown occurs the head merges with the background.			
Background		Diagonal, vertical and horizontal lines all, or almost all, broken and partially absent to allow areas of whiteness to appear. Note. In this impression the background lines remain strong in the early worn examples in contrast to worn examples in other positions because position 8 was originally more deeply engraved.			
Peripheral inscriptions:	Post paid	Some or all letters difficult to read or are indecipherable			
	Postage				
	Mauritius				
	Two Pence				
Corner ornaments:	S.W.				
	N.W.				
	N.E.				
	S.E.				

Position : 9

Impression : Early

Queen's Head		Facial features well-defined. Nine vertical lines on band of diadem all or most complete. One or more lines at right corner of base of bust follow profile of nape of neck upwards to lines descending from hairline at base of chignon. One small shading line present at top front of forehead.			
Background		Diagonal, vertical and horizontal lines all complete, or almost so, giving the appearance of an intact mesh.			
Peripheral inscriptions:	Post paid	All clearly defined			
	Postage				
	Mauritius				
	Two Pence				
Corner ornaments:	S.W.				
	N.W.				
	N.E.				
	S.E.				

Impression : Intermediate

Queen's Head		Facial features mostly well-defined as in the "Early" except for: vertical lines on band of diadem weak and few if any complete; no lines run parallel with the profile line of neck at right base of bust; Front profile line of face beginning to break down so that parts of the face merge with background. No shading line on forehead.			
Background		Diagonal, vertical and horizontal lines not all complete. The background no longer gives the appearance of an intact mesh.			
Peripheral inscriptions:	Post paid	All clearly defined			
	Postage				
	Mauritius				
	Two Pence				
Corner ornaments:	S.W.				
	N.W.				
	N.E.				
	S.E.				

Impression : Worn

Queen's Head		Facial features not clearly defined. The front profile line of the face has mostly broken down between top of head and front tip of base of bust so that at most it is present in the region of mouth and chin. Where breakdown occurs the head merges with the background.			
Background		Diagonal, vertical and horizontal lines all, or almost all, broken and partially absent to allow areas of whiteness to appear.			
Peripheral inscriptions:	Post paid	Some or all letters difficult to read or are indecipherable			
	Postage				
	Mauritius				
	Two Pence				
Corner ornaments:	S.W.				
	N.W.				
	N.E.				
	S.E.				

Position : 10

Impression : Early

Queen's Head	Facial features well-defined. Seven vertical lines on band of diadem all or most complete. Two or more lines at right corner at base of bust follow profile of nape of neck upwards to lines descending from hairline at base of chin.			
Background	Diagonal, vertical and horizontal lines all complete, or almost so, giving the appearance of an intact mesh.			
Peripheral inscriptions:	Post paid	All clearly defined		
	Postage			
	Mauritius			
	Two Pence			
Corner ornaments:	S.W.			
	N.W.			
	N.E.			
	S.E.			

Impression : Intermediate

Queen's Head	Facial features mostly well-defined as in the "Early" except for: vertical lines on band of diadem weak and few if any are complete; up to two lines may be present at right corner of bust and they follow profile of neck but no longer extend to base of bust; front profile line of face beginning to break down so that parts of the forehead and nose merge with background.			
Background	Diagonal, vertical and horizontal lines not all complete. The background no longer gives the appearance of an intact mesh.			
Peripheral inscriptions:	Post paid	All clearly defined		
	Postage			
	Mauritius			
	Two Pence			
Corner ornaments:	S.W.			
	N.W.			
	N.E.			
	S.E.			

Impression : Worn

Queen's Head	Facial features not clearly defined. The front profile line of face has mostly broken down between top of head and front tip of base of bust so that at most it is present in the region of mouth and chin. Where breakdown occurs the head merges with the background.			
Background	Diagonal, vertical and horizontal lines all, or almost all, broken and partially absent to allow areas of whiteness to appear.			
Peripheral inscriptions:	Post paid	Some or all letters difficult to read or are indecipherable		
	Postage			
	Mauritius			
	Two Pence			
Corner ornaments:	S.W.			
	N.W.			
	N.E.			
	S.E.			

Position : **11**

Impression : **Early**

Queen's Head	Facial features well-defined. Up to seven vertical lines on band of diadem, most are complete. Shading lines present on base of bust.
Background	Diagonal, vertical and horizontal lines all complete, or almost so, giving the appearance of an intact mesh. In this engraving there is a natural weakness in the shading lines in the margin of background to the left of "MAURITIUS".
Peripheral inscriptions:	Post paid
	Postage
	Mauritius
	Two Pence
Corner ornaments:	S.W.
	N.W.
	N.E.
	S.E.

Impression : **Intermediate**

Queen's Head	Facial features mostly well-defined as in the "Early" except for: vertical lines on band of diadem weak; front profile line of face beginning to break down so that parts of the face merge with background. No shading lines on base of bust.
Background	Diagonal, vertical and horizontal lines not all complete. The background no longer gives the appearance of an intact mesh.
Peripheral inscriptions:	Post paid
	Postage
	Mauritius
	Two Pence
Corner ornaments:	S.W.
	N.W.
	N.E.
	S.E.

Impression : **Worn**

Queen's Head	Facial features not clearly defined. The front profile line of face has mostly broken down between top of head and front tip of base of bust so that at most it is present around mouth and chin and front foot of bust. Where breakdown occurs the head merges with the background.
Background	Diagonal, vertical and horizontal lines all, or almost all, broken and partially absent to allow areas of whiteness to appear.
Peripheral inscriptions:	Post paid
	Postage
	Mauritius
	Two Pence
Corner ornaments:	S.W.
	N.W.
	N.E.
	S.E.

Position: 12

Impression: Early

Queen's Head	Facial features well-defined. Seven or more vertical lines on band of diadem, many complete. Two or more lines at right corner at base of bust follow profile of nape of neck upwards to lines descending from hair line at base of chignon. Shading lines on base of bust.	
Background	Diagonal, vertical and horizontal lines all complete, or almost so, giving the appearance of an intact mesh.	
Peripheral inscriptions:	Post paid	All clearly defined
	Postage	
	Mauritius	
	Two Pence	
Corner ornaments:	S.W.	
	N.W.	
	N.E.	
	S.E.	

Impression: Intermediate

Queen's Head	Facial features mostly well-defined as in the "Early" except for: vertical lines on band of diadem weak; no lines run parallel with profile line of neck at right base of bust. Front profile line of face beginning to break down so that parts of the face merge with background.
Background	Diagonal, vertical and horizontal lines not all complete. The background no longer gives the appearance of an intact mesh.
Peripheral inscriptions:	All clearly defined
Post paid	
Postage	
Mauritius	
	Two Pence
Corner ornaments:	S.W.
	N.W.
	N.E.
	S.E.

Impression: Worn

Queen's Head	Facial features not clearly defined. The front profile line of the face has mostly broken down between top of head and front tip of base of bust so that at most it is present in the region of forehead, mouth, chin and neck. Where breakdown occurs the head merges with the background.			
Background	Diagonal, vertical and horizontal lines all, or almost all, broken and partially absent to allow areas of whiteness to appear.			
Peripheral inscriptions:	Post paid	Some or all letters difficult to read or are indecipherable		
	Postage			
	Mauritius			
	Two Pence			
Corner ornaments:	S.W.			
	N.W.			
	N.E.			
	S.E.			

The Sherwin Issue



Denomination:	Two Pence (a One Penny was prepared but never postally used).
Engraver and printer:	It is uncertain who actually engraved the copper plates but the available evidence suggests that it was commenced by Robert Sherwin and completed by another at Port Louis, Mauritius. It is not known who printed the stamps.
Printing Format:	The "Post Paid" plates became too worn for further use and were re-engraved for the "Sherwin" issue. It was done so effectively that no feature of the "Post Paid" engraving was afterwards discernible on the plates. The individual engravings almost exactly coincide with the positions previously occupied by the "Post Pairs". Both the "Sherwin" plates survive, although scored to prevent their further use, in the Archives of the Royal Philatelic Society, London. Differences in the engraving enable every stamp to be identified as originating from one of the twelve positions on the plate.
Date of Issue:	October 1859.
Perforation:	Imperforate.
Paper:	Granular thin or thinnish paper (extremely delicate).
Impression:	Only one state of impression is recognised.

The Dardenne Issue



Denomination:	One Penny and Two Pence.
Engraver:	Louis Adolphe Dardenne at Port Louis, Mauritius.
Printing Format:	Lithographic stone of unknown size, and therefore the number of stamps printed on a sheet is unknown. It is thought that the printing stone consisted of two transfers of the intermediate stone, and that each printing may have consisted of 60 or 72 stamps.
Date of Issue:	December 1859 (30,000 One Penny and 40,000 Two Pence stamps were in stock on 12 December 1859).
Perforation:	Imperforate.
Paper:	White or yellowish laid paper. A watermark is known, but of unknown design; part of it is found only rarely on individual stamps.

An unsolved problem – Plating the Issue

In 1910 M. P. Castle wrote "It will be seen that this lithographic issue affords good ground for philatelic research, and I shall be a grateful recipient of any information from my fellow students which may help us to elucidate what is practically the only unsolved problem in connection with the remarkable issues of stamps engraved, lithographed and printed in the Island of Mauritius".

The Dardenne issue still remains the only one of the Mauritius primitives which has resisted all efforts to reconstruct a plating. In the period of over 80 years since Castle wrote those words considerable effort by eminent philatelists such as M. P. Castle himself, as well as R. W. T. Lees-Jones, A. J. Stevens, A. F. Lichtenstein and H. Kanai among others, have sought, without success, a solution to this problem.

Unfortunately, there are insufficient multiples of the One Penny in existence to achieve a plating of this value, but in the case of the Two Pence the information available from philatelic records shows there to be adequate material for a reconstructed plate to be assembled provided sufficient of it can be accumulated in one place.

Stevens and Lees-Jones worked for years during the 1950's attempting to reconstruct a plating using mainly photographs taken from sale catalogues, but also some of their own original material (including Lot 268), which together amounted to 76 multiple items of the Two Pence value. They were unsuccessful because they were working from life-size photographs of poor quality which denied them the sight of the fine details of the stamps. They also worked without the knowledge of J. R. W. Purves' and G. N. Kellow's advances in interpreting lithographic printing.

Kanai, in his book *Classic Mauritius* refers to Alfred Lichtenstein's attempt to reconstruct the sheet. He had assembled, on an unknown basis, 21 single Two Pence stamps in his efforts. This arrangement was broken up when his collection was sold. In a personal communication, Robson Lowe recalls that it was Mrs. Dale who attempted to reconstruct the sheet. Robson Lowe visited Mrs. Dale with his own part plating of the bottom right corner to compare a part plating of a top left corner owned by Mrs. Dale. They were unable to link the two or assemble a centre section. Robson Lowe believes that Hiroyuki Kanai purchased his part plating. Kanai, himself, refers to his own attempts at a reconstruction, and illustrates these on pages 121 and 122 of his book. He later included some additional pieces. Apart from two items which were from photographs, his final attempts at plating was an assemblage of 23 multiples of the Two Pence issue, together with the strips of three and four. 21 of these items were originally from the Dale and Lichtenstein sales, and one pair was previously owned by Alfred Caspary.

The "Retouched Neck" variety in the Two Pence

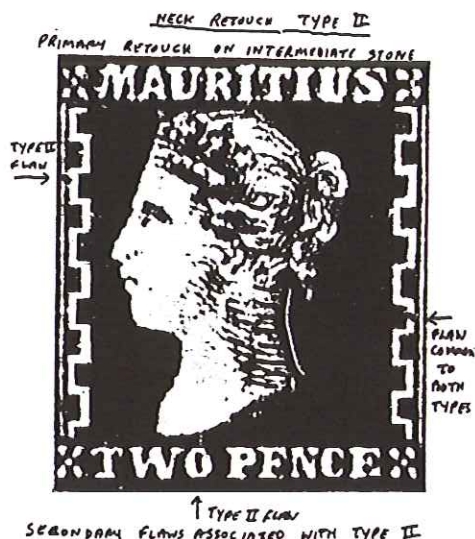
This variety, of which there are several types, is identified by the presence of a distinct evenly curved white line passing from the base of the chignon down the nape of the neck. In the so-called "major" or "heavy" retouched neck the line is as described, but in the so-called "minor" retouched neck variety the line is not so distinct, tends to be discontinuous, and does not form an evenly drawn curve as in the "major" retouch.

The "Major" retouch

There are two types of this variety, and are distinguished by reference to the following diagrams:

NOTE

These diagrams have been reduced in size too much so that the manuscript notes are not readable. Also some key features are not now present e.g. the line joining base of bust to "O" in "TWO" in Type II.



An examination of a large number of catalogues and collections of Mauritius stamps, referred to elsewhere, identified the existence of ten examples of Type 1, and six of Type 2. In consequence they are rare. It is understood that there may be examples in the collection of Her Majesty the Queen. Among those identified, there exist an unsevered pair of each type which are vital to any plating study. One of these, of uncertain type because the cancellation obscures the key area of the stamp, is offered in this sale (Lot 268), together with a single (Lot 269). There is also a unique cover of major philatelic importance bearing a Type 2 (Lot 267).

The "Minor" retouch

This variety appears to be even scarcer than the "major" retouch, as only one pair (with both showing the retouch!) and four singles have been identified. The pair (Lot 270), and one single (Lot 271), are offered in this sale. Comparison of this single with the left-hand stamp of the pair reveals features which confirm that these two stamps came from the same position on the plate. However, it cannot be established under what circumstances this retouching took place.

The "Feather" variety of the Two Pence

Some expertizing certificates for the Two Pence may refer to a "slight retouch", and this often refers to the so-called "retouch under TWO". This could be more accurately described as the "feather" variety, which occurs in the lower margin of the stamp below TWO and is usually joined to the outer frame of the stamp at this point. There are several identifiable types, some of which are clearly similar, and are found on more than one stamp. Kanai used these varieties as an aid to his plating study, and several are included in this sale. An example of one of the distinctive "feather" patterns is common to several stamps in this collection (Lots 272 to 276 and examples included in Lot 277). Kanai used this common feature by overlapping two "feather" stamps for his plating shown on page 121 in *Classic Mauritius*, (included in Lot 277).

An example of one type of this variety in this collection is shown in the following diagram:



Cut transfer variety

This variety is found in both the One Penny and the Two Pence. It can be clearly identified by the appearance of the left lower margin of the stamps having been cut away from a point below the first foot in the "W" of TWO, and sloping upwards to include a small section of the base of the left-hand margin. It is suggested that this variety is from the base of a transfer (i.e. the lower row of the intermediate stone) and resulted from trimming the transfers prior to laying them down on the stone. Consequently, in a plating study, stamps showing this variety are probable indicators of a likely junction of the transfers. In this collection there is one example of the One Penny (Lot 225), and one of the Two Pence (Lot 254).

Silica Vein flaws

Many Dardenne stamps of both values exhibit thin white lines, which are sometimes numerous, and usually vertical on the stamp. They are caused by imperfections on the lithographic stone, and many appear to be constant and consequently therefore potentially valuable aids to plating. There are numerous examples in this collection.

Ink clog flaws (acid spots) in the Two Pence

These flaws occur only in the Two Pence value. They consist of a blob of colour surrounded by a colourless ring. Various explanations for this flaw have been suggested, but for whatever reason for their development, it is likely that they occur only in the later printings. Consequently, they are not felt to be a reliable guide to plating. In this collection twelve stamps exhibit this flaw, and all are different. They are the strip of four (Lot 252), the strip of three (Lot 251), one pair (Lot 245), and two singles (Lots 249 and 265).

Retouched Nose and redrawn Nostril

Both these features have been identified, but whether the retouched nose is a genuine retouch or simply damage at some stage of the printing process is open to doubt, so the potential value of these features as an aid to plating is unknown. Kanai felt that one stamp of a pair illustrated on page 124 of his book *Classic Mauritius* showed a slight retouch to the Queen's nose. This pair is included in Lot 277.

Marginal Line flaw in the Two Pence

This major flaw extends vertically in the marginal space between three pairs of adjacent stamps. Kanai used this flaw as the centre piece of his large reconstruction on page 121 of *Classic Mauritius* (these are included in Lot 277). Single examples of this flaw are at Lots 247 and 260.

Colours of Printings

Kanai in *Classic Mauritius* classified the colours of the Dardenne issues as follows:

<u>One Penny</u>	<u>Two Pence</u>
Blood red	Grey-blue
Deep red	Slate blue
Red	Light blue
Red vermilion	Pale blue
Vermilion	Blue
Dull vermilion	Bright blue
	Deep blue

In addition to the above colours, others have been identified by eminent Dardenne collectors, such as Rose-red (Castle), Copper-red and Red-brown (Burrus), and Bright-red (Hind). Most of the examples of the One Penny in this collection appear to be variants of vermilion, but most, if not all, of the listed colours of the Two Pence are present.



David Feldman SA

Hotel International, Zurich

Am Marktplatz, Zürich-Oerlikon – Tel. (01) 311 43 41

Telex 823 251 – Cables HOTELINTER – Fax (01) 312 44 68

Direct line to auction: Telephone: 01/317 30 36 – Fax: 01/317 30 37

AUTUMN AUCTION SERIES ZURICH - NOVEMBER 1-6, 1993

Besides Mauritius, the following properties are included:

BRAZIL	The Angelo Lima Grand Prix Collection incl. the famous "Pack" strip and other rarities.
URUGUAY	Grand Prix Collection incl. one of the two tête-bêche errors and other rarities.
VENEZUELA	Grand Prix Collection.
PORTUGAL	The "J.Y." collection of top quality classics.
PORTUGUESE COLONIES	The Luis Frazao collection of 47 Crown Covers – largest collection ever formed.
SPAIN	The "V" collection of mint classics.
FRANCE	1849-1945 Very Important Collection.
CYPRUS	The C.G. Constantinides exhibit collection.
PARAGUAY	Large Gold Medal Collection.
NORWAY	Important "discovery" classic covers/stamps.
SWEDEN	Valuable collection of classics.

Other important sections:

Airmails (Rocket Mails), Austria, Austrian Levant, China, Estonia, Great Britain, Greece, Guatemala, Hungary, Ireland, Malta, Saudi Arabia, Turkey, U.S.A. and general Worldwide lots and collections.

Catalogues: British and Overseas SFr. 25.– (incl. postage) – Europe and Colonies SFr. 25.– (incl. postage).

Individual Catalogues for Brazil, Portugal and Colonies and France at SFr. 15.– (incl. postage) each.

David Feldman SA

PHILATELISTS - AUCTIONEERS

175, route de Chancy • P.O. Box 81 • CH-1213 Onex, Geneva, Switzerland

Tel. (022) 757 39 01 • Fax (022) 757 49 57



David Feldman SA

Geneva

PHILATELISTS	David Feldman Marcus Orsi Alan McNeilly	Managing Director Director Philatelist
ADMINISTRATION	Lydia Stocker Victor Sa	Director General Services and Security
ACCOUNTS	Marlis Hänni Alexandra Huber	Director Assistant

EXTERNAL ASSISTANTS AND CONTRIBUTORS

Chris McNeilly, Daniel Mirecki, Ingvar Pettersson,
Michael Tseriotis, Michael Vojta

Our representatives

Argentina

Juan Esteban Mautalen
Maipu 474 - 1D
1006 Buenos Aires
Tel.: (1) 322 10 43
Fax: (1) 325 64 89

Austria

Michael Vojta
Grünbergstrasse 31/DG
1120 Wien
Tel.: (222) 813 79 70
Fax: (222) 813 79 12

Australia

Wim Smits
c/o P.O. Sherbrooke
Victoria 3789
Tel.: (3) 755 22 00

Canada

Stanley Feldman
133 Lake Promenade
Toronto, Ontario M8W 1A6
Tel.: (416) 251 00 93
Fax: (416) 253 54 04

Ireland

David MacDonnell
c/o MacDonnell Ltd.
102 Leinster Road
Dublin 6
Tel.: (01) 97 74 49
Fax: (01) 97 74 40

Israel

Richard Stein
Room 310, Giron Centre
Jabotinsky Street
Raanana
Tel.: (52) 91 33 92
Tel.: (52) 91 92 70

Greece

Costas Marsellos
10 Kondili & 6 Diakou Street
Glyfada 16675
Tel.: (01) 894 45 81
Telex: 223 228
Fax: (01) 898 09 13

Norway

Tom Komnaes
Roll, Komnaes, Wesenberg
Bryggen 4
Postboks 1140
5001 Bergen
Tel.: (5) 32 11 05
Fax: (5) 32 80 06

Sweden

Sven Sandstedt
Norrmalmstorg 1
111 46 Stockholm
Tel.: (8) 611 05 10
Fax: (8) 611 05 10

U.S.A. (California)

Leopold B. Teacher
Consortium Int. Corporation
7744 Fay Avenue
201
La Jolla, CA 92037
Tel.: (619) 459 00 68
Fax: (619) 454 77 52

U.S.A. (Maine)

Daryl Pelletier
2 Oak Knoll Road
Cape Elizabeth, ME 04107
Tel.: (207) 799 9278
Fax: (207) 828 0237

U.S.A. (New York)

Stanley Salmen
Transbooks, Inc.
131 Varick Street, 2nd floor
New York, NY 10013
Tel.: (212) 691 72 48
Fax: (212) 675 84 31

David Feldman SA

P.O. Box 81 - Route de Chancy 175 - 1213 Onex, Geneva, Switzerland
Tel. (022) 757 39 01 - Fax (022) 757 49 57

